

Charleston, Sumter and Northern R.R. CHAS. E. KIMBALL, RECEIVER. IN EFFECT AUGUST 21, 1893. All trains Daily Except Sunday.

Table with columns N. B., STATIONS, S. B. and times for various routes including Charleston, Sumter, and Northern R.R.

BOND BLUFF BRANCH. No. 41 leaves Eatawville 9.45 a. m., Beville 9.55 arrive Ferguson 10.05.

HARLIN CITY BRANCH. No. 33 going North leaves Vauces 6.50 p. m., Snelts 7.08, Parlers 7.17, arrives Harlin City 7.35 p. m.

No. 31 going North leaves Vauces 11.15 a. m., Snelts 11.35, Parlers 11.48, arrive Harlin City 12.10 p. m.

No. 32 going South leaves Harlin City 8.30 a. m., Parlers 8.48, Snelts 8.57, arrive Vauces 9.15 a. m.

Trains 32 and 31 connect with No. 1 at Vauces. Trains 34 and 33 connect with No. 2 at Vauces.

No. 1 has connection with No. 1 at Eatawville. No. 11 connects with Harlin City Branch Trains 33 and 31 at Vauces and connects with C. C. No. 45 at Hamlet.

No. 2 has connection from C. C. No. 36 at Hamlet, connects with Harlin City Branch Trains 34 and 33 at Vauces and connects with S. C. No. 12 at Pregalls.

No. 1 connects with C. F. & Y. V. at Bennettsville for Fayetteville, connects with Seaboard Air Line at Hamlet for Wilmington, Charlotte, Shelby Rutherfordton; and at Charlotte with E. & D. Vestibule Limited for Washington and New York.

Passengers can take sleeper at Charlotte at 8.15 p. m. No. 2 passengers by this train have through sleepers. New York to Charlotte, connects with S. A. L. at Hamlet from Charlotte and North, and from Wilmington, connects with S. C. R. R. at Pregalls for Charleston. Dinner at Hamlet.

C. MILLARD, Superintendent.



A year's subscription to SCRIBNER'S MAGAZINE will bring into your home twelve monthly numbers, aggregating over 1,500 pages of the best and most interesting reading, and more than 700 beautiful illustrations.

Announcements. GEORGE W. CABLE will begin in the January number a romance entitled "John March, Southerner."

Two other important serials have been engaged: J. M. BARRIE, author of the famous "Little Minister," has written a new novel, the first since that famous story "GEORGE MEREDITH, the great English novelist, has in preparation a novel entitled "The Amazing Marriage."

SHORT STORIES will be abundant. W. D. Howells, Miss Elliott, W. H. Bishop, Ludovic Halevy, Paul Bourget, Joel Chandler Harris, and many new writers will contribute.

STUDIES OF AMERICAN LIFE will be an important feature, including Newport, Bar Harbor, Lenox, etc., and the West. THE ILLUSTRATIONS will be even more numerous and beautiful than ever. A series of Frontispieces chosen by Philip Gilbert Hamerton will be especially notable.

Complete Prospectus sent on request.

Special Offer. The numbers for 1893, and a subscription for 1894, \$4.50. The same with back numbers, bound in cloth, 6.00.

Sample Copy, 10 Cents. Charles Scribner's Sons, 742, Broadway, New York. Nov. 29.

PURE VINEGAR. I MADE LAST SUMMER for my own use a lot of Vinegar, from a mixture of FRUITS (mostly grapes) AND HONEY. It is very fine, both in flavor and strength.

Satisfaction guaranteed or money returned. N. G. OSTEN.

Atlantic Coast Line.

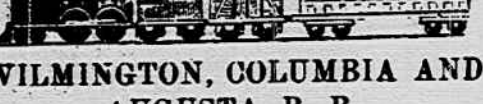


CONDENSED SCHEDULE. TRAINS GOING SOUTH. Dec. 1, '93. [No. 35] [No. 61] [No. 23] [No. 53]. A. M. P. M. P. M. A. M.

TRAINS GOING NORTH. [No. 78] [No. 60] [No. 14] [No. 52]. A. M. P. M. P. M. A. M.

Daily. † Daily except Sunday. No. 52 runs through to Columbia via Central R. R. of S. C. Train Nos. 78 and 14 run via Wilson and Fayetteville—Short Line—and make close connection for all points North.

Atlantic Coast Line.



WILMINGTON, COLUMBIA AND AUGUSTA R. R. CONDENSED SCHEDULE.

TRAINS GOING SOUTH. Dated Dec 3, 1893. [No. 55] [No. 58]. P. M. A. M. A. M.

TRAINS GOING NORTH. [No. 51] [No. 58]. A. M. P. M. P. M. A. M.

No. 52 runs through from Charleston via Central R. R. leaving Lane 8:44 A. M., Manning 9:20 A. M.

No. 55 runs through to Charleston, S. C., via Central R. R., arriving Manning 6:15 P. M., Lane 7:00 P. M., Charleston 8:45 P. M.

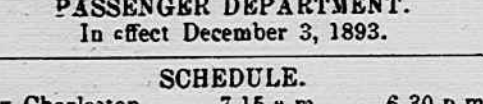
Trains on Manchester & Augusta R. R. leave Sumter daily except Sunday, 10:50 A. M., arrive Kimini 11:50. Returning leave Kimini 1:00 P. M., arrive Sumter 2:10 P. M.

Trains on Hartsville E. R. leave Hartsville daily except Sunday at 6:00 a. m. arriving Flyds 6:35 a. m. Returning leave Flyds 8:00 p. m., arriving Hartsville 8:04 p. m.

Trains on Wilmington Chadbourn and Conway railroad, leave Chadbourn 10:10 a. m. arrive at Conway 12:30 p. m., returning leave Conway at 2:00 p. m., arrive Chadbourn 4:50 p. m. Leave Chadbourn 7:00 a. m. and 5:15 p. m., arrive at Hub 7:45 a. m., and 6:00 p. m. Returning leave Hub at 8:15 a. m. and 6:30 p. m., arrive at Chadbourn 9:00 a. m. and 7:15 p. m. Daily except Sunday.

JOHN F. DIVINE, General Sup't. J. R. KENLY, Gen'l Manager. T. M. EMERSON, Traffic Manager.

"OLD RELIABLE" LINE. South Carolina Railway.



PASSENGER DEPARTMENT. In effect December 3, 1893.

SCHEDULE. Lv Charleston 7 15 a m 6 30 p m. Summerville 7 52 a m 7 10 p m. Pregalls 8 28 a m 7 45 p m. Branchville 9 10 a m 8 35 p m. Bamberg 9 52 a m 9 17 p m. Denmark 10 08 a m 9 30 p m. Blackville 10 25 a m 9 44 p m. Aiken 11 27 a m 10 44 p m. Ar Augusta 12 15 p m 11 30 p m.

Lv Augusta 6 40 a m 3 40 p m. Aiken 7 24 a m 4 27 p m. Blackville 8 18 a m 5 28 p m. Denmark 8 32 a m 5 44 p m. Bamberg 8 45 a m 5 58 p m. Branchville 9 25 a m 6 25 p m. Pregalls 10 05 a m 7 28 p m. Summerville 10 39 a m 8 05 p m. Ar Charleston 11 20 a m 8 45 p m.

Lv Charleston 7 15 a m 5 00 p m. Summerville 7 52 a m 5 45 p m. Orangeburg 9 46 a m 7 35 p m. Kingville 10 32 a m 8 25 p m. Ar Columbia 11 15 a m 9 10 p m.

Lv Columbia 4 20 p m 5 30 a m. Kingville 5 05 p m 6 16 a m. Orangeburg 5 56 p m 7 04 a m. Summerville 8 05 p m 9 05 a m. Ar Charleston 8 45 p m 9 45 a m.

Lv Columbia 9 30 a m. Lv Kingville 10 38 a m. Ar Camden 12 58 p m. Lv Camden 3 25 p m. Ar Kingville 5 07 p m. Ar Columbia 5 55 p m.

Through sleeper on train leaving Charleston 6 30 p. m., arrive Atlanta 6 25 a. m. Train leaving Charleston 7 15 a. m., runs direct to Asheville.

Through trains between Columbia and Blacksburg via Camden and Ohio River and Charleston R. R. Connection made at Pregalls from C. S. & N. R. R. for Atlanta and the West.

E. P. WARING, Gen'l Pass. Agent, Charleston, S. C. J. M. TURNER, Superintendent. C. M. WARD, General Manager.

PATRICK Military Institute, ANDERSON, S. C. A MILITARY BOARDING SCHOOL opens SEPTEMBER 12th. Full corps of experienced teachers. Healthy location. Social moral and religious influences good. Rates reasonable. Terms accommodating. Apply for catalogue. COL. JOHN B. PATRICK, Principal. June 23-3m

Buy Your CLOTHING, FROM D. J. CHANDLER, THE CLOTHIER,

If you do not, you will certainly regret it.

HE HAS A Brand New Stock

MEN'S and BOY'S Clothing, Hats and Shoes.

Owing to the short crops of Cotton and scarcity of Money, he is selling everything in his line at a sacrifice.

Bargains await you.

Call as soon as you can.

Nov. 15.

THE FALL SEASON

opens with Elegant Goods

and SPLENDID ATTRACTIONS.

Investigate the golden opportunity our

New Stock affords.

WE simply ask you

to Come and See

Our Goods, Assuring all that they

will find the highest grades and uniform prices. Our new goods must be seen to be appreciated.

Samples sent upon application. J. Ryttenberg & Sons.

O'DONNELL & Co.,

Fall 1893.

In making this, our Annual Fall Announcement, we desire to call particular attention to our HAT STOCK.

For years we have been making a specialty of this department, and we can safely say that we have never been better prepared than this season. OUR STOCK COMPRISES

OVER 100 DOZEN SAMPLE HATS of the latest shapes and styles, which we offer

AT ONE-HALF REGULAR PRICE. This statement would seem incredulous, but we are prepared to prove it by an examination of our stock. There are many citizens of Sumter County who are now wearing hats bought from us two and possibly three years ago

AT ONE DOLLAR EACH. Who will bear us out in the assertion that in some grades they are even less than one-half what they have been paying for the same class of goods. Our friends seem to appreciate our efforts in this line, for several days before our stock was received we were having inquiries:

"Have Your Hats Come In?" And when they did come, before we had an opportunity of assorting and marking them, several dozen were picked out. We would therefore advise friends who wish a CHOICE FUR HAT, either soft or stiff in any shape AT ONE DOLLAR,

To call early and make their selections, as they are going very rapidly. IN OUR Clothing Department

We are better prepared than usual to give you good value for the money you wish to invest, from a Boy's Suit at 65c. to a Man's Suit at \$25.00. We feel that we can supply your wants.

IN OUR Shoe Department

You will find HONEST VALUE and a complete stock from which to select. We cannot pass over this department without calling attention to our Celebrated Brand of E. P. Reed & Co's.

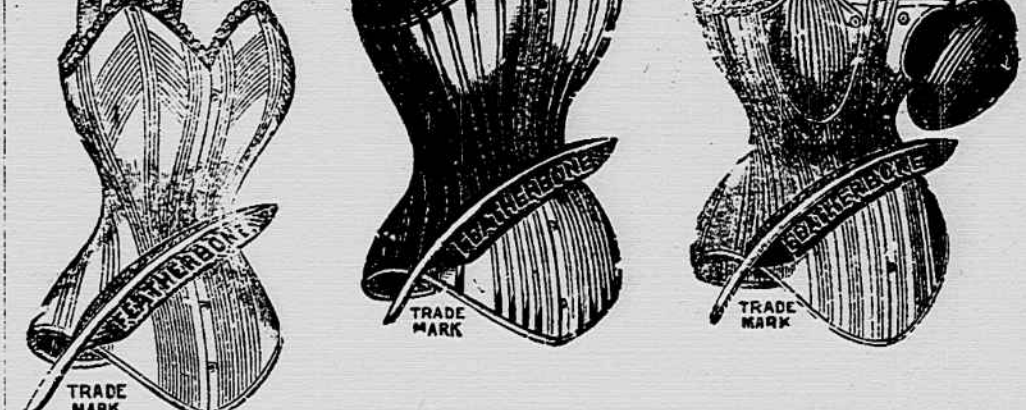
We have had exclusive sale of these goods for five years and we will pay a Reward \$50 to any lady in the county who has ever bought these goods from us, and upon failure of the same to give satisfaction that we did not REFUND HER MONEY, give a new pair of shoes or make due allowance for the time they were worn. This we are authorized to do by the manufacturers.

IN OUR DRY GOODS DEPARTMENT

We offer a complete line of Staple and Fancy Dry Goods and DRESS GOODS, with Trimmings to match. We might enter into an enumeration of prices here that would astonish you, but as the STOCK IS SO LARGE and advertising so expensive we merely ask you to call and be convinced.

In our Notion Department we Have a Lot of Slightly Soiled Kid Gloves at 25c. pr. pair. This includes some of the celebrated Centemeri brands. Our celebrated GLOBE KID, in all shades, every pair warranted, has no superior.

Featherbone Corsets.



The lady who desires solid comfort, ought to supply herself with a pair of the above brand as soon as possible. The subjoined cuts give only a faint idea of them. They are made strictly of feather-bone and sold exclusively by us.

We have elaborated considerably upon your exterior wants but have said nothing about THE INNER MAN. No matter how poor the crop or how low the price, WE MUST EAT and we were no less particular in providing for you in this respect than in our other various departments.

Flour is Cheap. and we Bought 500 Barrels, So if you Want Rock Bottom Prices See us before buying.

We cannot close this appeal to our friends without something to say ABOUT THE COTTON BUSINESS.

Our reputation is pretty well established in the market, but we were never better prepared to handle the fleecy staple than we are this season. Always have the satisfaction of knowing that O'Donnell Saw Your Sample,

For then you can feel assured if he did not buy, some one paid all or more than it was worth. Respectfully,

O'Donnell & Company, Main Street SUMTER, S. C. Sep 20

HEADQUARTERS FOR WATCHES. JAMES ALLAN & CO.,

Diamonds, Jewelry, Silverware, Spectacles, Drawing Instruments. THE FINEST STOCK IN THE STATE. RELIABLE GOODS AT REASONABLE PRICES.

Watch Repairing a specialty. Chief Inspectors of Watches for South Carolina Railway, Atlantic Coast Line and Southern Division of Three Cs Rail Road. JAMES ALLAN & CO., 285 King St., Sign of Drum Clock. Charleston, S. C. Feb. 8