

LOTS OF THINGS STILL TO PLANT.

LATE CABBAGE, TOMATOES, CELERY, SQUASH, BEANS, ETC. YET AVAILABLE.

With food prices high and still soaring it almost behooves us to know just exactly what and how to do to make both ends meet, so great is the strain put upon the purse strings of the poor farmer; but be it as it may, he is still a great deal better off than his poor town or city brother.

The man in the city or town with a meager salary, possibly with a large family and not even ten square feet of land upon which to plant even a few vegetables, is in a far sight worse fix than is the country farmer, who has to go to town and sell eggs and butter to buy the necessary bread to eat with his vegetables, because he has them perfectly fresh and in bounteous quantities, and with the addition of milk, butter and eggs, to say nothing of fried chicken thrown in for good measure. He also has nice fresh fruits from the roadside, such as the following: blackberries, dewberries, plums, huckleberries, etc., yet all the while has a nice orchard soon to come into bearing.

The poor city man's family was, up until a few years ago, a positive "shut-in." No sunshine hardly at all to rear his children to healthy manhood and womanhood. Numbers lived in the same room breathing the same foul air until philanthropical workers tried to rectify such conditions.

There is yet worlds of work for them to do, and a good one would be to have different sections of the cities and towns supervised by competent leaders, with subdivisions and land near these cities leased and worked by these same poor little children, giving them not only an insight into the wonderful workings of nature, but fresh air as well. Each should have so many feet of land upon which to raise his or her own vegetables that the family likes; and dinners can be served each day in the open, using some as waiters, still giving a mental training of service in after years. Prizes offered for best results, then exhibition days appointed; parents and friends invited; mayors and high officials invited to make speeches of encouragement to the furtherance of more food productions.

There are so many things that can yet be planted before frost that it is staggering in its immensity.

I will enumerate a few that can yet be planted and which will go a long way toward helping to feed the family and have some to sell, viz:

Late Flat Dutch cabbage can be planted upon rich soil, preferably clay loam, and they begin to grow well after being transplanted in August. Give a dressing of nitrate of soda after it rains.

Tomatoes of the Stone variety. Self-blanching celery would be well to plant at this time, also squash, cucumber, cassava, muskmelons, okra, Irish potatoes; also Mexican June corn and the regular old cornfield bean of a variety that is quite scarce and hard to find; still I think I have located them in an Atlanta seed house. These do their best after the cool nights in September.

Both the pole and bunch limas, pole and bunch snaps, can now be planted; rutabagas, too, must be planted by August 1, as they require much more time to make than the other turnips. They do best in black lands with 600 pounds each of cotton seed meal and acid phosphate bedded in rather flat, to retain the moisture during the dry months of August and September.

The piece that we had our spring onions can now be planted to late cabbages, black eyed peas, lady finger or Shannon peas, also the Tepary bean; a late introduction into the United States from Mexico, having been used there by the Indians for generations.

I planted mine April 17 and will within a few days have seed to replant for late green shelled beans. Apply to the government for seed, as I did.

Lettuce and radish can be planted

in long boxes, partially shaded, and garden nasturtiums can be interspersed among them to add color and beauty as well as used as a salad, and the flower for garnishing.

I am now experimenting with late planted English peas, for I find I have a pea that seems to be everlasting—one that has even gotten parched to a crisp during this drought, and is now taking on new growth.

You can not plant too many peanuts, yet it is getting rather late; however, by having them shelled, if you had the proper season there could yet be some made.

For the chickens plant the following: Shallu, Hegarl, peanuts, peas, and I feel sure we can yet plant some of the mammoth sunflowers; yet it seems full late. The Shallu is said to make excellent batter cakes, also pops very much like popcorn. Popcorn makes excellent feed for the little biddies, and they thrive well under such feeds as the above.

In August I plant all kinds of turnips, except the rutabagas; onion sets, both the single and multiplying, radish, beets, lettuce, spinach, carrots, salsify and parsnip.

It may be full late to plant velvet beans, but I expect to plant anyway for pasturage every available spot, even if the beans do not mature; also soy beans and late corn, so as to have a good pasture for cows and hogs after the crops are "laid by." Then I can sit back and watch the pigs grow and the milk pails fill to overflowing.

A word for the frogs, lizards, insects and birds, and then I will be through.

Spare the frogs and lizards to eat the cutworms and injurious insects; also spare the large green horned tomato worm with the white cocoon in his back, for as well as I can remember it, an entomologist told me they hatched into green spiders that ate the grasshoppers which defoliated plants worse than did the tomato worms; but by all means destroy the ones without the cocoon in his back.

Also destroy the large black and white striped beetle and save the young ones, for he said they, too, were beneficial, and the way to destroy the adult beetle was to throw it in a pan of water; upon which had been poured some coal oil.

Take care of the birds and they will take care of you.

Just as others have said, "I do not see how the Kingstree Furniture Co can sell better goods for less money." "There's a reason." I do not know the tobacco business; I do know the furniture business. We have gentlemen in Kingstree that do know the tobacco business and will pay you all your tobacco is worth, and I will sell you your furniture and guarantee quality and price. 7-12-1f KINGSTREE FURNITURE CO.

LARGE PLANTATIONS

are hard to manage now—you know the scarcity of labor keeps you guessing. Have us subdivide your farm into small tracts—we can find you a buyer for it; our method gets results. Don't worry any more; our representative will call to see you at our expense and explain our method. Write us today.

Atlantic Coast Realty Co.

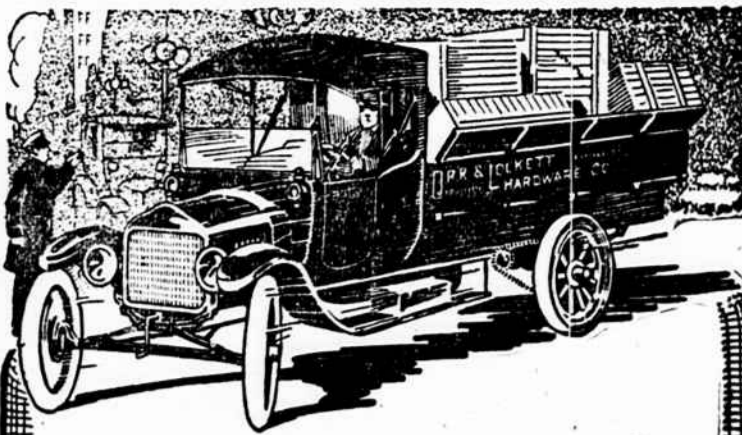
"The name that justifies your confidence"

OFFICES:

Petersburg, Va. Greenville, N. C.

x x x

To the last drop
MAXWELL HOUSE COFFEE
Is Perfect
Ask Your Grocer



Smith Form-a-Truck

\$350

F. O. B. CHICAGO

Even This 30,000 Will Not Be Enough

There will be over 30,000 Smith Form-a-Trucks built this year—but even this huge production will not be enough. So if you have waited for further proof of the wonderful economy—efficiency—service value of this tremendous achievement in motor transportation, don't wait another day.

Thousands of users—over 600 lines of work—are all the proofs you need, and there is not a single Smith Form-a-Truck owner who will not say that he has cut delivery and hauling costs from 50% to 75%.

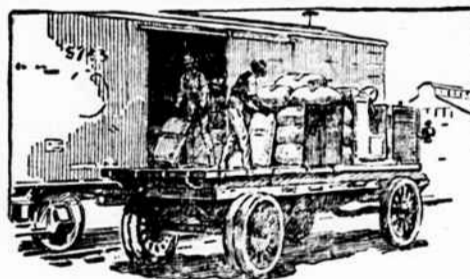
This year you not only get this wonderful attachment at the price of a good pair of horses, but you get it adapted to any Ford, Maxwell, Buick, Dodge Bros., Chevrolet or Overland Car. So you can select the power plant you like the best—have the most confidence in.

Smith Form-a-Truck is the true hauler of the world—the master economizer in hauling and delivery cost—the master saver in equipment investment.

Come in today for a demonstration—but don't put off your order.

THOMAS McCUTCHEN, Agent,
KINGSTREE, SOUTH CAROLINA.

Used successfully a whole year all over the South



BUCKEYE
Lintless Hulls have been fed by farmers, dairymen and stockmen throughout the South for the past year. Reports

from these feeders indicate that these lintless hulls when properly fed, are a great improvement over the old style hulls.

By actual use, these feeders have found the following advantages of using

BUCKEYE HULLS

COTTONSEED LINTLESS

Every pound of the Buckeye Hulls contains much more food value because the lint on the old style hulls has no food value. The price per pound of real roughage in the form of Buckeye Hulls is very much less than in the form of the old style hulls. Buckeye Hulls do not clog or flux the digestive tract. Other foods mixed with them are readily assimilated.

They are free of trash and dust.
They are sacked and easy to handle.
They take half as much space in the barn.

If you have not tried Buckeye Hulls, please remember that thousands of feeders are using them and will use no other roughage. If you have not given Buckeye Hulls a fair trial, let the experience of these successful feeders guide you in using them as they should be used.

Mr. Olney Yarber, Booneville, Ark., has fed a carload of Buckeye Hulls to cows and calves to get them ready for the range. He had been feeding hay and he finds that they did much better on Buckeye Hulls as roughage. He has another car of Buckeye Hulls bought.

To secure the best results and to develop the ensilage odor, wet the hulls thoroughly twelve hours before feeding. It is easy to do this by wetting them down night and morning for the next feeding. If at any time this cannot be done, wet down at least thirty minutes. If you prefer to feed the hulls dry, use only half as much by bulk as of old style hulls.

Book of Mixed Feeds Free

Gives the right formula for every combination of feeds used in the South. Tells how much to feed for maintenance, for milk, for fattening, for work. Describes Buckeye Hulls and gives directions for using them properly. Send for your copy to the nearest mill.

Dept. K The Buckeye Cotton Oil Co. Dept. K
Atlanta Birmingham Greenwood Little Rock Memphis
Augusta Charlotte Jackson Macon Selma

Summer Furniture

Porch Chairs, Swings and Hammocks

These are Sterling aids to Hot Weather Comforts

Come in and look over our complete line of home furnishings when you bring you tobacco to Kingstree

Steele Furniture Co.

WATCHES AND CLOCKS.



This is the season of the year for you to have correct time, and I have this time in Waltham, Elgin and South Bend Watches and Clocks of the best makes. You need a "Big Ben" Alarm Clock at your tobacco barn.

The newest ideas in Jewelry and Wedding Goods, Hand-painted China and Community Silverware for your table.

Bring me your broken Watches, Clocks and Jewelry to be repaired. Repairs made same day received. Mail orders promptly attended to. Phone 44.

T. E. BAGGETT, Jeweler.

ATLANTIC COAST LINE

THOROUGHFARE OF TRAVEL BETWEEN

North and South. Florida-Cuba.

TRAVERSING THE STATES OF

Virginia, North Carolina, South Carolina, Georgia, Florida and Alabama.

A passenger service unexcelled for luxury and comfort, equipped with the latest Pullman Dining, Sleeping and Thoroughfare Cars.

For rates, schedules, maps or any information, write to

WILLIAM J. CRAIG

Gen. Pass. Agt. -:- Wilmington, N. C.

L. W. HARRISON & SON
CYPRESS
SASH, DOORS, BLINDS
MOULDINGS AND MILL WORK
CHARLESTON, S. C.

THE WAR IS ON

BUT

J. L. STUCKEY

HAS BOTH

Horses and Mules

For Sale or Exchange.

J. L. STUCKEY

Livery, Feed and Sale Stable

Lake City, - South Carolina

Advertise In The Record. It Pays!