

This Pharmacy was established by its proprietor, Wm. E. Pelham, in 1870. During the past twenty-five years it has been highly regarded by the public as

The Leading Pharmacy

OF NEWBERRY, S. C.

The appointments of this modern pharmacy are first-class, the stock is large and varied, the proprietor and his clerks are fully equipped by education and experience for the management of this large and increasing business. The patronage extends throughout several counties and is from year to year increasing extensively to other sections.

The store room, which has a plate glass front, measures 25 feet wide and 100 feet deep, is beautifully lighted by electricity, the overhead lighting and white papered, the whole effect being pleasing and sanitary.

Prescription Department

The Prescription Department is up-to-date. None but high grade chemicals and analyzed drugs being employed in the compounding of physicians' prescriptions. Work turned out by this establishment is of the highest order of exactness and accuracy.



INTERIOR OF PELHAM'S PHARMACY.

Second Story.

The second story is used for the storing of heavy drugs, and for manufacturing the large line of specialties which are in great demand, and for filling orders in the wholesale department.

Specialties

- Pelham's Pectoral Syrup.
- Pelham's Blackberry Balsam.
- Pelham's Rheumatic Liniment.
- Pelham's Tasteless Cod Liver Oil.
- Pelham's Dandruff Cure & Hair Tonic.
- Pelham's Thyrotol (mouth wash).
- Pelham's Sarsaparilla.
- Pelham's Strengthening Bitters.
- Pelham's Liver Pills.
- Pelham's Dyspepsia Lozenges.
- Pelham's Co. Ext. Buchu.
- Pelham's Baby Soothing Syrup.
- Pelham's Rheumatic Cure.
- Pelham's Imperishable Cologne.
- Pelham's Rose Dentifrice.

Under separate roof the Newberry Bookery and Lamp Hall is successfully conducted by the proprietor.

Wm. E. PELHAM

C. & G. S. MOWER COMPANY,

.... IN SELLING

RELIABLE MERCHANDISE

.... MAKES

SATISFIED ÷ CUSTOMERS.

... The One and Inseparable Rule of PROFIT and PLEASURE ...

You buy with Satisfaction in any of Our Departments.

If you are looking for anything in Dry Goods and Notions, Mower's is the place to get it.

Mower's Millinery has the Reputation of Experience and Taste for Our claims of its Excellence.

Shoes sold at Mower's are Guaranteed for Solid Quality.

DRY GOODS,
MILLINERY,
NOTIONS,
SHOES,

C. & G. S. MOWER CO.

JAMIESON'S

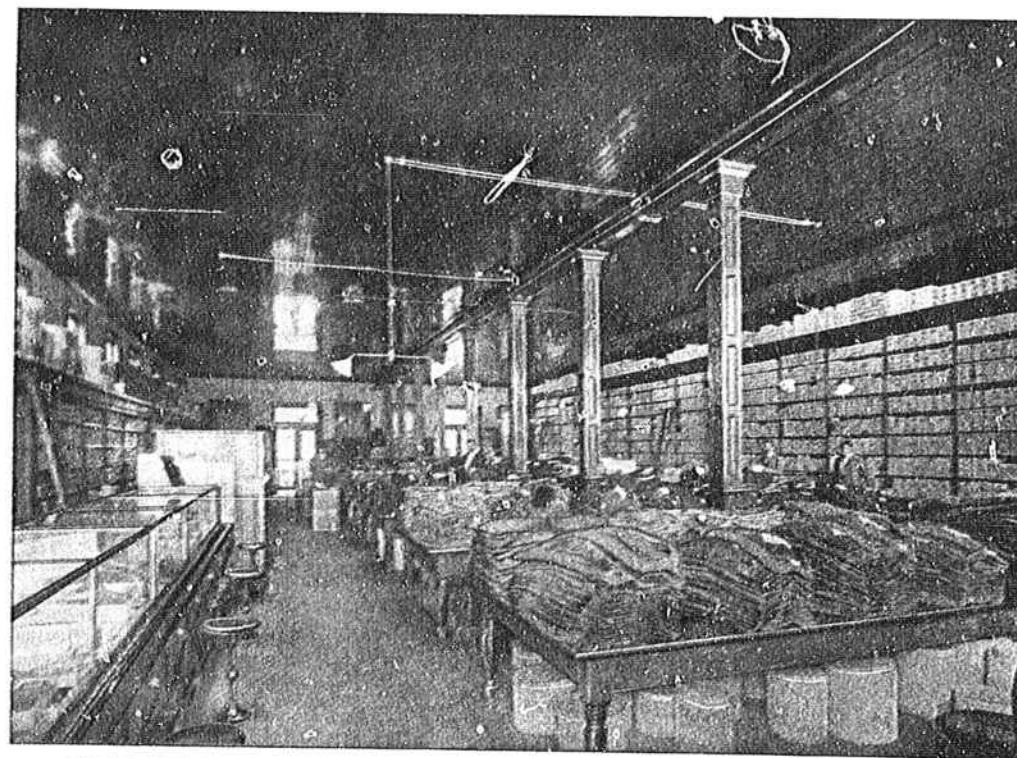
...IS THE...

CLOTHING HEADQUARTERS.

SHOES FOR MEN, LADIES, BOYS, YOUTHS, CHILDREN, And all who Wear Them.

Honest Goods and Prices That are as Low as they can be and consistent with Fair Dealing.

O. M. JAMIESON.



INTERIOR VIEW OF JAMIESON'S CLOTHING EMPORIUM.

We try to please all the people all the time.

Our customer's interest is our interest.

We never advertise things that we have not got.

We carry the largest stock in our line in Newberry or in the adjoining counties.



O. M. Jamieson

UP-TO-DATE WORK

Up-to-Date Steam Laundry,

H. S. Rightmire, Prop., Newberry, S. C.

Special Rates to College Students,

WE ARE SUITED ONLY WHEN WE SUIT OUR CUSTOMERS.

Daily Capacity 20,000.

Milwaukee Cream Brick.

T. C. POOL, Manufacturer of Fine Brick.

NEWBERRY, S. C.

The Newberry Cotton Mill, a view of which appears on the front cover of this edition, is built of brick made by us. The Herald and News, Observer and U. S. Post Offices are also built of this brick.