

VINOL MAKES WEAK WOMEN STRONG

Positive—Convincing Proof

We publish the formula of Vinol to prove convincingly that it has the power to create strength.

It Cod Liver and Beef Peptones, Iron and Manganese Peptones, Iron and Ammonium Citrate, Lipo and Soda Glycerophosphates, Casein.

Any woman who buys a bottle of Vinol for a weak, run-down, nervous condition and finds after giving it a fair trial it did not help her, will have her money returned.

You see, there is no guess work about Vinol. Its formula proves there is nothing like it for all weak, run-down, overworked, nervous men and women and for feeble old people and delicate children. Try it once and be convinced.

For sale by Laurens Drug Co. and Druggists everywhere.

Colds Cause Grip and Influenza
LAXATIVE BROMO QUININE Tablets remove the cause. There is only one "Bromo Quinine." E. W. GROVE'S signature on box. 30c.

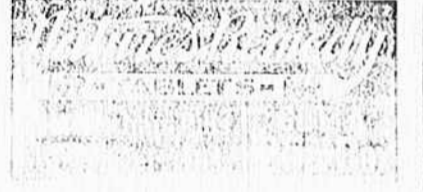
Quit Laxatives, Purgas; Try BR

NO Tonight—Tomorrow Feel Right

It is a mistake to continually dose yourself with so-called laxative pills, mineral oil, purges and cathartics and drive your bowels to a state of chronic constipation.

Why don't you begin right today to overcome your constipation and get your system in such shape that you can do as you please? You can do so if you get a box of Nature's Remedy (S.S. Tablets) and take one each night for a week or so. S.S. Tablets do much more than merely cause pleasant easy bowel action. They also stimulate the digestive organs, promote the circulation of the blood, help to get the elimination from all the food you eat, gives you a good, hearty appetite, strengthens the liver, opens the bile ducts, regulates kidney and bowel action and gives the whole body a thorough cleaning out. This is a natural process and you will not have to take medicine every day. An occasional S.S. Tablet will keep your body in a healthy and you can always feel your best.

LAURENS DRUG CO.

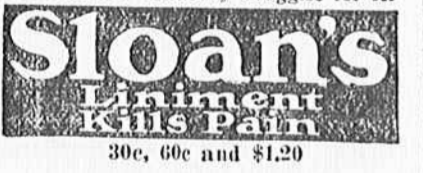


ACHES AND PAINS QUICKLY RELIEVED

You'll find Sloan's Liniment softens the severe rheumatic aches

Put it on freely. Don't rub it in. Just let it penetrate naturally. What a sense of soothing relief soon follows!

External aches, stiffness, soreness, cramped muscles, strained sinews, back "cricks"—these ailments can't fight off the relieving qualities of Sloan's Liniment. Clean, convenient, economical. Ask any druggist for it.



YOU MEN WHO PAY THE FAMILY SHOE BILLS

Tramping 18 miles a day, Mr. H. M. Foreman, a mail carrier of Allentown, Pa., found that shoes with ordinary soles last about a month. But he says a pair of Goodyear's Red Seal shoes gave him more than the amount of service, in which time he walked over 4,000 miles.

The only shoes that you may ever own that will last you through the winter and spring, which gives you a clean, comfortable, warm, and soft foot.

Neolin Soles



NEW TELEPHONE RATES.

The new rates on long distance telephone charges as announced by the postmaster general on December 13, 1918, have been received by the local office of the telephone company. These rates became effective Tuesday, January 21, 1919.

The entire rates are lengthy and give considerable information. Following are extracts from the new rate card.

A new method of computing charges on telephone toll cards (to points outside the local service area) under which all toll rates throughout the United States are placed on a standard basis, becomes effective 12:01 a. m. January 21, 1919.

A brief description of this new method and of its application to the several classes of service offered, is given in this circular.

"Station to Station" Rate.
When a person makes a toll call without specifying that conversation is desired with a particular person and the connection is established and conversation held, the "station to station" rate applies.

This rate is determined by the air line distance between toll points and is computed on the basis of 5 cents for each six miles, up to 24 miles, and 5 cents for each 8 miles, beyond that distance.

"Station to station" calls should be made by number wherever telephone directory information is available. Where this information is not available at the calling telephone such calls may be made by giving the toll operator the name and address of the subscribers at the telephone called.

"Person to Person" Rate.
When a person makes a toll call specifying that conversation is desired with a particular person and the connection is established and conversation held with that person, the "person to person" rate applies.

As this service requires a greater amount of operation effort, the rate for such calls is about one-fourth greater than the "station to station" rate.

The "person to person" rate is computed on the day rate between the points involved whether the call is made during the day or during the night, and the minimum charge is 20 cents.

No person to person call is accepted where the "station to station" rate is less than 15 cents.

"Report Charges."
When a "person to person" call is made and the particular person desired is not in area will not talk or when an exact telephone address of the particular person desired has not been given and he cannot be reached at a telephone within one hour, a "report charge" applies.

Such a charge also applies if the calling party is absent when the connection is completed, within one hour, or if he refuses to talk.

This charge is to cover compensation for the operating work performed and is usually about one-fourth of the "station to station" rate.

In any case where a "report charge" applies, the minimum charge is 10 cents and the maximum \$2.00.

"Appointment" Rate.
When the calling party in placing his call appoints a definite specified time at which he will talk on a "person to person" basis and the conversation is held at the specified time the "appointment rate" applies.

The "appointment rate" is usually about one-half greater than the "station to station" rate.

The "appointment rate" is computed on the day rate between the points involved, whether the call is made during the day or during the night and the minimum charge is 25 cents.

No appointment call is accepted where the "station to station" rate is less than 15 cents.

"Report charges" apply under the same general conditions as specified for "person to person" calls.

"Messenger Calls."
When a call is made on a "person to person" basis and a messenger is required to secure attendance of the designated person at a public pay station at the distant point, the "messenger call" rate applies.

This rate is the same as the "appointment rate" for the same distance, plus any charge for messenger service.

The "messenger call" rate is computed on the day rate between the points involved, whether the call is made during the day or during the night, and the minimum charge is 25 cents.

Messenger charges incurred are to be paid even if desired conversation is not held.

No "messenger call" is accepted where the "station to station" rate is less than 15 cents.

"Report charges" apply under the same general conditions as specified for "person to person" calls.

Standard Toll Night Rates.
The following reduced rates for night service on a "station to station" basis only are effective 12:01 a. m.

MANY SIGNERS HIGHWAY PETITIONS

Petitions From All Over the State Ask for Legislature to Build Permanent Road System.

Columbia, Jan. 23.—Petitions are being received from all over the state signed by automobilists asking for legislation at this session of the General Assembly along the plan for building a permanent system of hard-surfaced highways for South Carolina decided upon January 8, 1919, at a joint conference of the members of the State Highway Commission and the State Highway Campaign Committee.

Blank petitions were sent by the Campaign Committee to prominent automobilists in every section of the state and they were asked to ascertain the sentiment of the owners of machines in their respective sections towards the proposed legislation. The replies that are being received and the numerous signed petitions would indicate that the motorists are overwhelmingly in favor of the proposed plan.

The State Highway Campaign Committee was anxious to test the sentiment of the motorists before going before the General Assembly with the proposed plan because it wanted to be in position to acquaint the members of the legislature with the fact that the legislation was desired by the automobilists. Since only the automobilists will be affected so far as taxes are concerned, the committee feels that if they desire the additional tax to be placed upon them the legislators and the people ought not to object. In other words, as Mr. R. G. Rhett, of Charleston, a member of the campaign committee puts it, the autoists are asking the state merely to lend them its credit for a brief time and they will build the permanent roads at pay for it.

It is probable that legislation will be introduced in both houses of the General Assembly at once carrying out the plan adopted on Jan. 8. This will provide for a change in the act creating the State Highway Commission so as to make it consist of ten members, one from each congressional district and the three senior professors of civil engineering in the state colleges and giving them additional powers: the raising of the annual license tax beginning with 1920 on motor vehicles to \$1 per horsepower for automobiles and motorcycles and \$2 per horsepower for motor trucks and the license for dealers to \$50 for each make of car handled and to fix the license for trailers at \$10.

The highway commission will also be instructed to investigate the cost of the construction of such a system of highways and to report to the next session of the legislature what State bonds would be necessary therefor after providing for proper maintenance of the said highway.

Provision will also be made for the return to any county, which constructs any portion of the State Highway System as laid out by the commission, under its supervision, the cost of said highways, or, in the event of a provision being made whereby counties, contributing in any way to the construction of the highway system such portion of this cost as such county would in that event be entitled to.

Colored People Delighted With New Discovery to Bleach the Skin.

Atlanta, Ga.—Says that recent tests have proven without doubt that swarthy or sallow complexions can be made light by a new treatment recently discovered by a man in Atlanta. Just ask your druggist for Cocotone Skin Whitener. People who have used it are amazed at its wonderful effect. Rid your face of that awful dark color or greasy appearance in a few minutes. It costs so little that you can't afford to be without it. Just think how much prettier you would look with that old dark skin gone and new, soft, light skin in its place. Men and women today must care for their complexions to enter society.

If your druggist will not supply you with Cocotone Skin Whitener, send 25c for a large package to Cocotone Co., Atlanta, Ga. For sale by the Laurens Drug Co.

January 21, 1919.

8:30 p. m. to 12 midnight—about one-half of the "station to station" day rate.

12:00 midnight to 1:00 a. m.—about one-quarter of the "station to station" day rate.

For the purpose of applying night rates, the time of day at the point at which a "station to station" message originates, is used.

The minimum night rate is 25 cents. Day rates apply on calls made at night when the "station to station" charge is less than the minimum night rate.

"Collect Calls."
"Collect calls" are calls for which the charges are reversed; that is, are to be collected from the subscriber at the distance station at which the call was "person to person" calls. Such "collect calls" or reversed charges are allowed only in connection with completed.

TABLE MEAL.

Fit For The Table.

Corn meal, for table use, should be ground from thoroughly-cleaned and selected milling corn, and the

Meal Should be Fresh

from the mill. We are using the BEST corn we can buy to make our meal. We are not trying to make the cheapest meal, but the very best that can be made. You can't buy meal made from the best corn at prices some meal is being sold at. Any way, you would rather pay a little more and get

The kind that is Fit for the Table

Ask your grocer for Bramlett-Babb meal and Flour. If they haven't any they can get it for you.

Bramlett-Babb Milling Co.

Flour : : Meal : : Feed : : Grain
Laurens, South Carolina

ANDERSON "SIX"

The beautiful lines of The Anderson Car sweep from the honey-comb radiator gracefully along the body sides, merging into the pleasing contours of the rear.

The sloping windshield and new style top help lend to this Anderson its air of individuality.

The upholstery is of high-grade leather in buttonless plaited design over curled hair and specially constructed spiral cushion springs, affording unusual comfort.

The 40-horsepower Red Seal Continental motor responds to the accelerator with a snap that delights the most experienced motorist.

Under never-failing power the car quietly glides along at high speed or creeps away at a snail's gait, easily and quickly changing from one speed to another, obedient to the will of the driver.

The Borg & Beck clutch is disengaged by the slightest pressure of the foot and is exceptionally smooth but positive in active.

The best car in its class.

For demonstration phone, write or see

T. B. SUMEREL

AT FARMERS NATIONAL BANK