

# SUCH IS LIFE—A Good Bargain

By Charles Sughrue



# Old Bible Scripts Are Photographed

## Monasteries on Mount Athos Yield Valuable Data.

Princeton, N. J. — Approximately 2,200 photographs of Biblical manuscripts in Greek Orthodox monasteries on Mount Athos, many never before photographed and several never before seen by American scholars, have made it possible for Princeton university professors to reconstruct the origins and development of Biblical illustrations in manuscripts from the Second to the Nineteenth centuries.

The photographic expedition, sponsored by Princeton university, passed two and a half months in 14 of the 20 monasteries on Mount Athos, one of the richest depositories of early Bible pictures.

Since late in January Profs. Albert M. Friend, Jr. and Ernest T. DeWald, of the Princeton departments of art and archeology, and Dr. Kurt Weitzmann, leader of the expedition, have been compiling a preliminary classification of the photographs in preparation for publication of all the illustrations found in the Greek manuscripts of both the Old and New Testaments. Doctor Weitzmann was assisted in the expedition by Frejbers, Anotol von Meibohm, of the University of Prague.

**Unknown to Scholars.**  
The earliest of the manuscripts photographed, many of which had not been catalogued and were therefore unknown to scholars, were painted in the Ninth century.

Other pictures now in the Princeton

collection date to the Sixth century, and, with the Mount Athos photographs, make possible accurate determination of the general structure of Bible illustrations as far back as the Second century, Professor Friend said.

In the collection which Professor Friend began to compile about 1920, are 10,000 photographs of Old and New Testament manuscript illustrations, of which 2,000 are of miniatures in the Vatican library. There are about 1,000 similar illustrations from manuscripts in the Bibliotheque Nationale in Paris. With the addition of the Mount Athos pictures seven-eighths of the known material has been assembled.

**See Ancient Volume.**

The expedition was the first permitted to see the contents of the "Gospels of Nicophoros Phocis," an imperial gift to the Monastery of Great Laura, the first on Mount Athos. The volume is bound in golden covers and embossed with gems and enamels. Miniature pictures in the volume of the three great feast days are among the finest examples of early Eleventh-century Byzantine art.

The work at Princeton has been undertaken as a part of the preparation of an exhaustive index of Christian art, a catalogue of Christian art which has been in the process of classification for more than 20 years.

Two volumes on the Old Testament corpus are planned for publication this year, with complete publication of the enormous collection expected to require about ten years. Ten volumes of Old Testament illustrations and four volumes of text about them are planned. The New Testament is expected to require four volumes of illustrations and two volumes of text. Professor DeWald is in charge of preparation of the text of the first two volumes.

## Teach Soil Conservation Through Motion Pictures

Washington.—Motion pictures will be used as part of the administration's program for educating the farmers of America to the need of soil conservation, keystone of the substitute for the invalidated AAA. An appropriation bill carries \$70,000 for the preparation and distribution of motion pictures dealing with the Department of Agriculture's scientific work. This sum will enable the department to operate its movie laboratories, draft its scenarios, and edit and prepare its pictures on soil conservation.

The soil conservation service, out of its own appropriation, may be asked to earmark additional funds for educational pictures on soil conservation, showing approved methods for protecting and conserving the nation's soil fertility.

In its extension work the Department of Agriculture has long made effective use of the motion picture. Its Washington studio is up to date though small.

## The Lindbergh Heart

By LEONARD A. BARRETT

Whenever we hear the name of Colonel Charles A. Lindbergh, we immediately think of the flight of the St. Louis to France and of the heroic qualities displayed by America's foremost aviator. That Colonel Lindbergh made a contribution to aeronautics, second to none, no one would deny. Seldom is it given to any person to be accredited with fame in more than one field of speculation.

Colonel Lindbergh, however, is destined to have his name indelibly engraved upon the records of two departments of science, the latter being the field of medical research. The month of March, 1936, will ever be remembered in the history of medicine for the announcement made through the Rockefeller foundation, of the completion of an artificial body by

Johnny Behr, athletic director of the Illinois Athletic club of Chicago, has been named head coach of the American Olympic boxing team for 1936. Mr. Behr served on the coaching staff of the 1928 American Olympic track team, and has been coaching track, boxing and other sports at the I. A. C. since 1919.

## OLYMPIC COACH



Colonel Lindbergh. It is called the robot heart. The mechanism consists of glass tubes of various dimensions, glass receptacles, and so on, into which can be placed a wounded part of the body, and the healing process watched and studied with scientific precision. In other words, the parts of the human body such as a diseased thyroid gland, or kidney, can be made to function under normal conditions, because the receptacle into which these organs are placed functions exactly as does the human body. Organs separated from the human body can thus be kept normally alive, and the process of healing under the influence of the curative methods employed, studied as it never has been possible before.

The physician or surgeon studies the effect caused by certain bodily conditions as they are manifested in fever, pains, and symptoms. From these effects he seeks to discover the cause of the malady. This effort to discover the cause may be attended by the element of a "guess." Many times the cause is difficult to discover. It is claimed that the robot heart will reveal not only the effect of disease but the cause as well.

It took Colonel Lindbergh five years of most painstaking toil to perfect his contribution to medical science. According to a representative of the Rockefeller foundation, it is impossible to predict the ultimate value of the application of Colonel Lindbergh's new creation to the healing of disease.

All hail to America's foremost aviator. In the future we shall doubtless think of him also, as a scientist of the highest order.

© Western Newspaper Union.

**Kansas' First Baseball Charter**  
Kansas records reveal the first baseball charter in the state was filed from Leavenworth in January, 1867.

# The Household

By Lydia Le Baron Walker



The Dimensions of a Floor Plan Seem More Spacious Than in Reality.

THE limits of a room are essential to remember in a homemaker's consideration of decorative schemes. This was impressed upon me recently when going over some pictorial plans for interiors. It was not that the rooms were badly arranged. They were good. But where would there be sufficient space in the average living room, for instance, for two large davenport, a large knee hole writing desk, great over-stuffed chairs, capacious tables, a piano and seven lamps, three of them floor lamps, to say nothing of the various footstools, small tables, side chairs, etc.? It certainly would require a mansion.

In my work of interior decoration, I have become accustomed to calculating floor spaces and gauging room areas. The measurements of this room would have to be at least 20 feet wide by 30 feet long, and 25 by 35 or 40 feet would be more accurate to give the spaciousness pictured. However attractive the arrangement, it could not be practical for ordinary size living rooms.

**Visualizing Areas.**  
The home decorator must learn to visualize rooms. To some persons this is an easy matter, while others have difficulty in doing it. If you belong to the latter group, begin by seeing in your mind's eye, how some article you want would fit first into one space and then in another in the room. Know the measurements of your rooms so that when you see pictures of rooms, and would like to have something similar in arrangement, you can, yourself, gauge whether it would be feasible, or not.

It is important to give an impression of space in rooms of small dimensions. For this furniture and furnishings must either be chosen carefully to conform to sizes of rooms, or furniture must be quelled when pieces are over-large or there are too many as is often

the case in these days, when moving into smaller homes is practiced for economy's sake. By careful arrangements of furniture certain articles can seem to diminish, when they are too large, or the number of pieces seem less than they really are.

On the other hand the limits of large rooms can be made to seem less by good arrangements of furniture when there is scarcity of pieces.

**Lure of Names.**  
Furniture and furnishings have an amazing number of names apart from those of classification, such as beds, chairs, tables, etc. Some of these other names are due to the fact that a person originated the design, and was also, perhaps, the craftsman who actually made the pieces, as instanced in Chippendale, Sheraton, Hickok, Morris, etc.

The fame of Chippendale has come down through the centuries largely through his chairs, but by no means for them alone for his list of kinds is a long one. Some of his pieces bear the further descriptive name of Chinese, expressive of the influence of the art of that great country from which returning merchant vessels were bringing to England treasures in many arts.

© Bell Syndicate.—WNU Service.

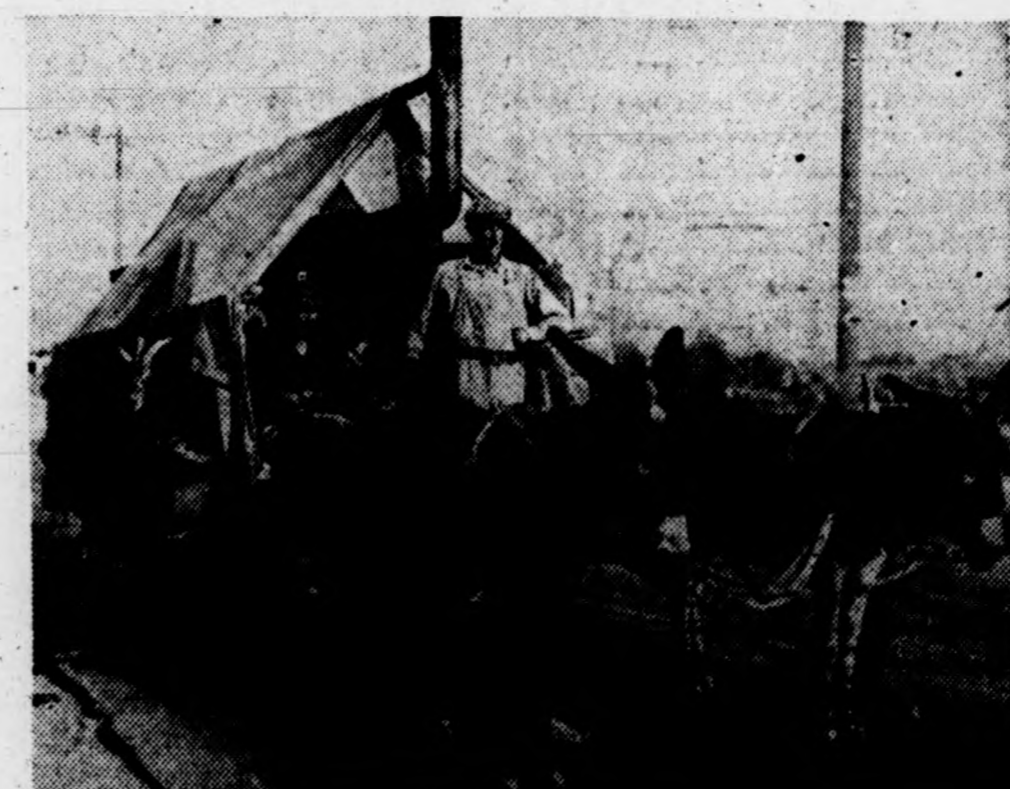
## POTPOURRI

### Star Magnitudes

Stars are divided by astronomers into "magnitudes" according to the different degrees of brightness. Stars of the first magnitude shine perhaps a million times more brightly than those of the fifteenth. The human eye cannot see those beyond the sixth, while huge telescopes reveal none of the over magnitude than the fifteenth.

© Western Newspaper Union.

## Proof the West Is Still Wild



The horseless carriage may be here to stay, but the West is still wild, as witness this unique covered wagon, housing two families, as it arrived in Phoenix, Ariz., from Sweetwater, Texas. Note the stovepipe—it provided the comfort of home—while the two-burro-power conveyance also carried livestock in the form of the family goat. The human occupants were Mr. and Mrs. J. B. Howard and their six children and Mr. and Mrs. Willis Mainard and one child.

## Oldest Temple-Fort Found by Explorers in the Orient

A prehistoric architect's conception of a combined citadel and temple of worship, antedating by nearly three centuries the earliest biblical reference to temple fortresses, has been uncovered by archeologists at Tepe Gawra, in northern Mesopotamia, it was announced at the University of Pennsylvania. The discovery and excavation of the massive walled "round house," a circular building of sun brick unique among all prehistoric finds, climaxed the seventh season of work at the "Great Mound" 15 miles northeast of Mosul by a joint expedition of the university museum and the American Schools of Oriental Research.



**ROLL DEVELOPED**  
8 Never-fade Velox Prints 25c  
OVER EXPOSURE  
JACK RABBIT CO.  
Spartanburg, South Carolina (0012)



**Civilized Jails**  
In a thoroughly civilized land even the jail meals are appetizing.



How Louisiana Was Named  
Louisiana was named after King Louis XIV of France.

## FAMOUS TONIC CREAM QUICKLY TRANSFORMS DEAD SKIN

**DEAD SKIN**  
3 minutes a dry removes freckles, blackheads, too!

Famous NADINOLA Cream actually smooths away the dull, dead outside that hides your natural beauty. All you do is this: (1) At bedtime spread a thin film of Nadinola Cream over your face—no massaging, no rubbing. (2) Leave on while you sleep. (3) Watch daily improvement—usually in 5 to 10 days you will see a marvelous transformation. Freckles, blackheads disappear; dull, coarsened skin becomes creamy-white, satin-smooth, lovely! Fine results positively guaranteed with NADINOLA—tested and trusted for nearly two generations. At all toilet counters only 50c. Or write NADINOLA, Box 44, Paris, Tenn.

**5¢ AND 10¢ JARS**  
THE 10¢ SIZE CONTAINS 3 1/2 OZ. (100g)  
TIMES AS MUCH AS THE 5¢ SIZE

## MOROLINE

SNOW WHITE PETROLEUM JELLY  
Alloy in Gold Coins  
Gold coins contain alloy because pure gold is too soft.

## Mother Advised Daughter To Take CARDUI

Many, many women have taken Cardui on the advice of their mothers who had been helped by it. "I would have severe cramping spells," writes Mrs. F. C. Allen, of Smithdale, Miss. "I would get nauseated, and feel faint and would have to go to bed. I would be very nervous for two or three days. I was afraid to go away from home, for fear I would faint and fall. My mother, having used Cardui with good results, advised me to try it. I am so glad I took Cardui and got relief, for it has done wonders for me." Of course, if Cardui does not benefit YOU, consult a physician.

## A FARMER BOY

ONE of the best known medical men in the U. S. was Dr. R. V. Pierce of Buffalo, N. Y., who was born on a farm in Pa. Dr. Pierce's Golden Medical Discovery is an herbal extract which eliminates poisons from the intestines and tones up the digestive system. Pimples and blotches caused by faulty elimination disappear and you feel the strengthening effect of this well tried medicine. Buy now!

**PARKER'S HAIR BALM**  
Removes Dandruff, Itches, and Itchy Scalp  
Keeps Hair Soft and Healthy  
Promotes Growth of Hair  
Prevents Premature Baldness  
FLORESTON SHAMPOO—Ideal for the hair in connection with Parker's Hair Balm. Makes the hair soft and fluffy. It comes by mail or at drug stores. H. K. Chemical Works, Pittsburgh, Pa.

## AMAZE A MINUTE SCIENTIFACTS BY ARNOLD

**OIL PRODUCERS -**  
OF 750,000 OIL WELLS  
DRILLED IN SEVENTY YEARS IN THE  
U.S., 520,000 ARE STILL PRODUCING.

**MONKEY LAUGH -**  
CHIMPANZEES LAUGH  
WHEN PLEASED.

**IODINE IN FOOD -**  
OYSTERS AND CLAMS CONTAIN  
200 TIMES AS MUCH IODINE AS  
BEEFSTEAK.

WNU Service.