

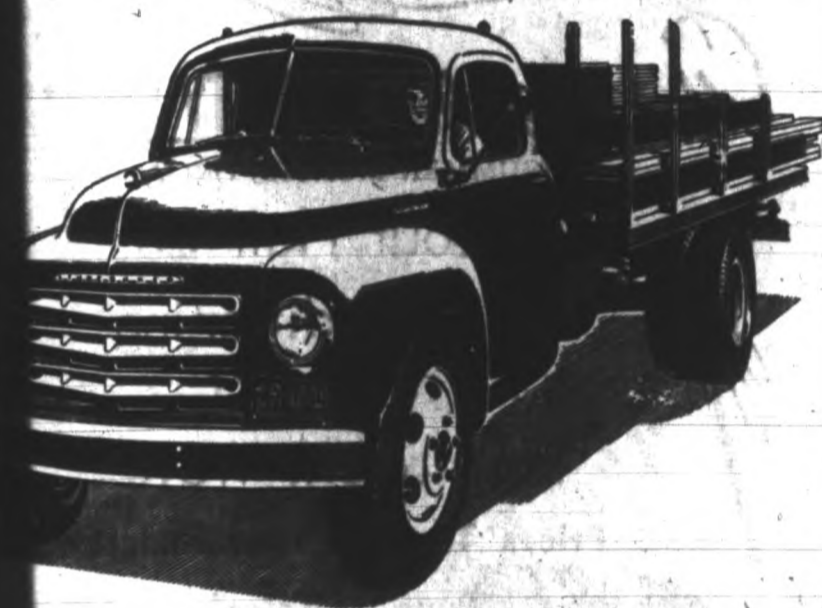
Heritage Church Coming Day

Services are complete for the coming service at the Baptist church Sunday morning. The address of welcome will be by the Rev. Paul M. Norman, pastor, and the morning service will be by the Rev. L. Norman, of Greenville. The afternoon service the address of welcome will be by the Rev. Paul M. Norman and responses will be by former pastors and members of the church. The Kershaw County Singing Society will meet at 2:30 p.m. in the church. The public is invited to come to the well-filled baskets.

COASTAL HOLINESS CHURCH
South Fair Street
J. M. Gonde, Pastor
School 10 a. m., Homer superintendent, in charge.
6:45, Charles Hewitt, president.

Hand-out new trucks at low-cost mileage!

Studebaker 49ers



Husky, handsome, powerful new Studebaker trucks—with new engineering that yields remarkable gas and oil mileage!

Brilliant-performing new Studebaker trucks—with wear-resisting craftsmanship that keeps repair bills off your books for months!

Stop in and see these revolutionary Studebaker trucks—their stand-out value is one of the reasons a Studebaker buying wave is sweeping the nation!

MYERS MOTOR COMPANY
DeKalb Street Phone 47
STUDEBAKERS REALLY ROLLING IN 1949! STUDEBAKERS YEAR!

THRIFTY BUYERS SHOP AT MYERS



MYERS MOTOR CO.
Camden, S. C. — East DeKalb Street

Complete One Stop Service
47, Sunday and Holidays call 546W, 887R, 741W, 266W, 318J

**STUDEBAKER SALES and SERVICE
MACK TRUCK SERVICE**

We Specialize in General Repairs on Cars and Trucks

**MOTOR TUNE UP... SUN METHOD
FRAME AND AXLE STRAIGHTENING
WHEEL BALANCING AND ALIGNING
WRECKED CARS REBUILT
AUTO PAINTING
SAFETY GLASS FITTED TO ALL MAKES CARS and TRUCKS
SEAT COVERS, HEADLININGS and SPORT TOPS MADE TO ORDER**

22 Years Continuous Service in Camden

Give the Distance and SAVE the Difference

Pre-School Clinic At Midway School Tuesday, May 24

A pre-school clinic for all children who will enter the first grade next September at Midway School Tuesday morning, May 24 at 10 o'clock.

Dr. Humphreys, county health officer, and Miss Glasscock, one of the county nurses, will be present at the clinic to make physical examinations and give vaccinations.

No child can be enrolled in school without having been vaccinated for Smallpox.

Evangelistic service 7:45. Wednesday prayer service 7:45. Beginning June 5, a revival meeting will begin with the Rev. R. E. Powers doing the preaching. The public has a cordial invitation to worship with us in these services.

"Build The Band"

Announce Rules And Regulations Of Corn Contest

Rules and regulations for the South Carolina Corn Improvement Contest for 1949 were announced this week. The contest will be conducted by the Clemson Extension Service, and enrollment has already started at the offices of county agents throughout the state.

Prizes totalling \$1,750 to be awarded first and second place state winners and first and second place winners in each of the three Clemson extension districts are made available by donations from members of the fertilizer industry in the state.

The rules of the contest follow rather closely the same general structure as used in the State 5-acre Cotton Contest. Farmers may secure copies of the rules and entry blanks from county agents. The closing date for entry is July 1, 1949.

A contestant may enter not more than two 1-acre plots, one of which will be considered for a prize. He may use any variety, hybrid, fertilization, or practice he may choose in the effort to produce the highest possible yield on a 1-acre plot.

"This state-wide corn contest will encourage farmers to really show what can be done toward producing record corn yields and increasing average yields per acre," Hugh A. Woodie, leader, Clemson Agronomy Extension Work, declares. "Our annual 5-acre cotton contest has demonstrated clearly that contests like this can go a long way in increasing crop production and in improving production practices," he adds.

Mr. Woodie points out that the state contest supplements but does not replace adult, FFA, and 4-H Club county and other local contests now being conducted in many counties. He urges contestants already enrolled in these contests to also enroll in the state contest in order to become eligible for the state and district awards. The first prize in the state con-

test will be \$600 with a second state prize of \$250. The prizes in each of the three extension districts will be \$200 for first place and \$100 for second place winners.

Lee Little has also assisted when possible with film showings and films are shown at the schools.

William J. Fix showed wonderful films of accident prevention.

F. H. A. Loans

TAKE IT EASY

LET US FIND YOU
A HOME
OF YOUR OWN
SEE US TODAY

**Real Estate Sales
Insurance, Inc.**
622 DeKalb St. Phone 324

Red Cross Notes

Following is the annual report of public information submitted at the annual meeting of the Kershaw county chapter of the American Red Cross.

The public information department of the Kershaw county chapter, ARC, consists of the chairman, appointed by the chairman of the chapter and executive board, Harold Booker, for fund campaign publicity, DaCosta Brown of The Chronicle, and the executive secretary, Mrs. Tobin. The media are The Chronicle, and other papers, and distribution of the news letters and bulletins, and literature sent out from southeastern area in Atlanta and Washington.

Literature is distributed to the Junior Red Cross and school, the Library Bookmobile takes them out into the county, and the school and county and city libraries have them on file.

During the fund campaign window displays are used with posters and the merchants cooperate splendidly.

**George R. Darden, III
Member Sigma Nu**

George R. Darden, III, student at the University of North Carolina at Chapel Hill, was recently initiated during the formal ceremonies as a member into Sigma Nu National Fraternity. Darden was the president of his fraternity pledge class during the past year. He is the son of George R. Darden, Jr., formerly of Wilmington, N. C., and now of Camden.

See Us For Your Plumbing Needs

WE CARRY A FULL LINE OF SUPPLIES ... FIXTURES ... WATER PUMPS etc.

For Prompt and Courteous Repair Work

CALL

ED CLINE PLUMBING CO.
SOUTH BROAD STREET CAMDEN, S. C.
PHONE 930-J
Time Payment Plan Now Available.

Surprise Dinner For Mr. Shealy

C. D. Shealy was honored Sunday, May 15 with a surprise dinner on the occasion of his 62nd birthday.

The dining table was centered with a huge birthday cake trimmed in pink and green with lettering reading "Happy Birthday Dad."

Those attending were four of his five daughters, which included Mrs. Jessie M. Shealy and two sons of Louisville, Mrs. Claudia Grattic of Newberry, Mrs. Helen Wiener and husband of Charleston, Mrs. Daisy Ray Day and husband of Columbia and Harry C. Shealy and wife and daughter of Charleston.

"Build The Band"

Contractors Builders

CONCRETE BLOCKS

... Three Cell Block ...

Made by Dual Vibrating and Press PAC Machine
PRICES DELIVERED IN CAMDEN:

8x8x16 Stretcher	17c each
8x8x16 Square End Corner	17c each
8x8x 8 Square End Half	12c each
4x8x16 Partition	12c each

Blocks Have Sharp Edges, Square Corners, Uniform in Size and Color.
TEST RESULTS EXCEED GRADE-A SPECIFICATIONS

With Our Production Any Rush Order Up to 10,000 Blocks Can Be Delivered Immediately.

We Deliver Our Blocks Anywhere In State For Reasonable Price. Furnished By Request.

SEE OUR BLOCKS BEFORE YOU BUY
Your Continued Patronage Will Be Appreciated

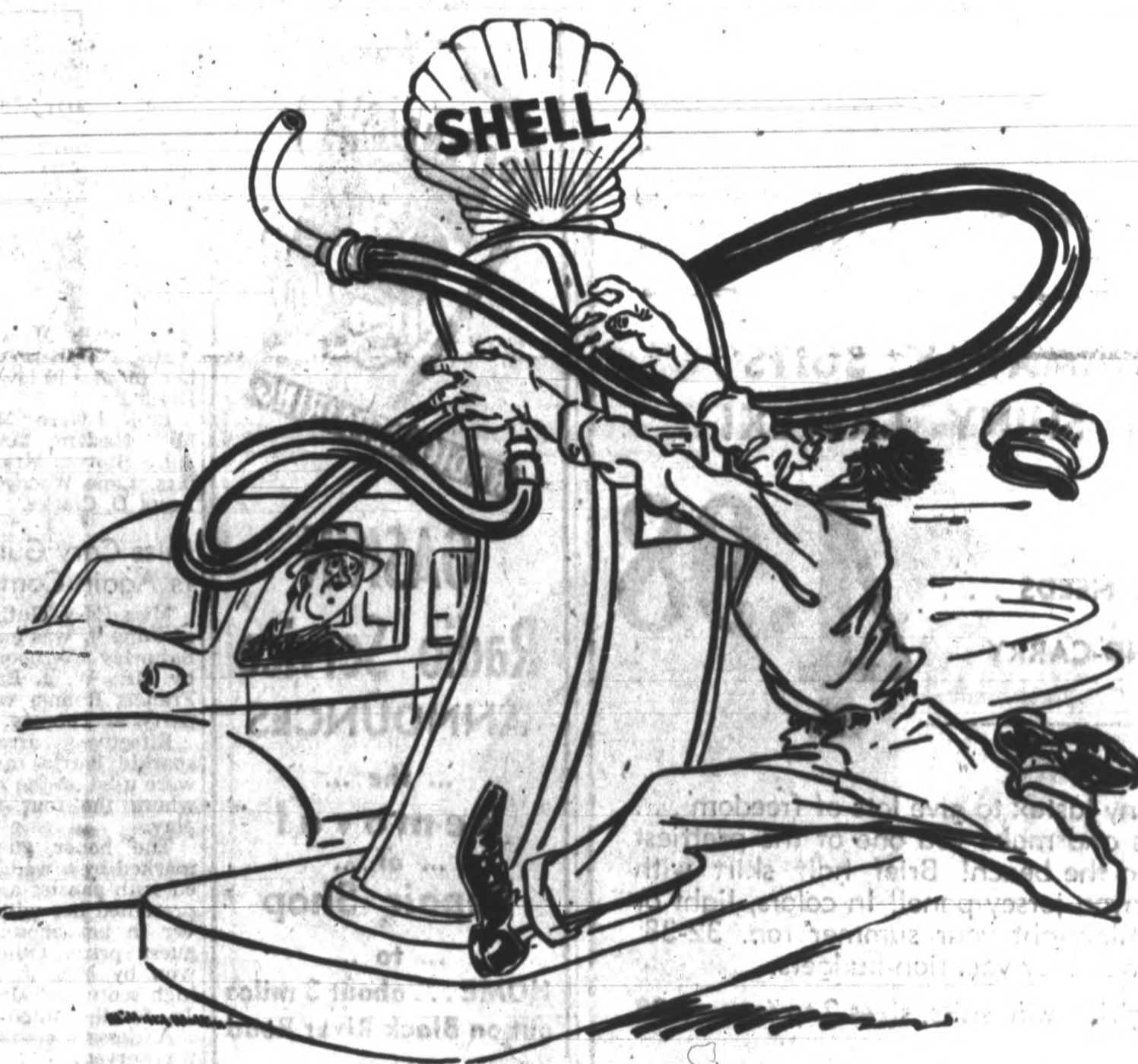
REEVES BROS. BLOCK CO.
Phone 605-W 2 Miles East No. 1 Highway Camden, S. C.

Among the Indian mounds at Cahokia, Ill., is one which covers 16 acres and rises about 100 feet. It is the largest man-made earthen mound in the country and is bigger than the great pyramid of Cheops in Egypt.

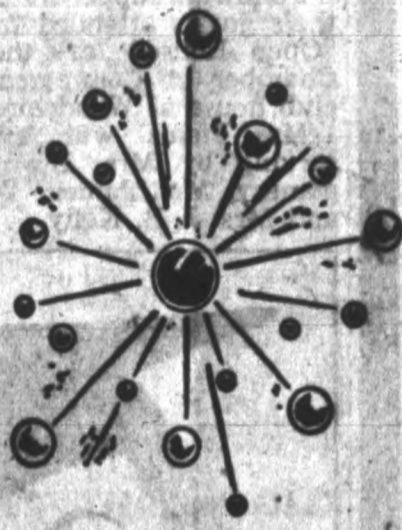
**TOWLE—WALLACE
FRANK M. WHITING
and HEIRLOOM
STERLING SILVER**

1922 1948

F. D. GOODALE
—JEWELER—
Phone 231 Camden, S. C.
539 E. DeKalb St. (Opp. P.O.)



"Activated" Shell Premium is the most powerful gasoline your car can use!



Activation makes the difference

Shell splits molecules: Shell scientists who the finest available crude—activates this molecule by splitting them and rearranging the atoms according to Shell's formula for a perfectly balanced gasoline. The result—Shell Premium, the most powerful gasoline your car can use!

YES, many of today's engines have been stepped-up... they call for more powerful gasoline! Now Shell gives you the most powerful gasoline your car can use—Shell Premium—it's "activated." No other fuel can top its power in your car!

This is made possible by Shell's own, specially produced power components and by Shell's own blending methods!

Actually, Shell splits molecules to get more power for today's more powerful engines. So you get a gasoline that's "activated" 3 ways!

1. Activated for knockless power! Pulling hard in low gear or traveling at full throttle, Shell Premium delivers full, quiet power!
2. Activated for fast "getaway." Shell Premium delivers the extra power you can feel—no "balking," no "stuttering"—you go!
3. Activated for full mileage. Shell engineers "balance" Shell Premium so that every drop of fuel goes to work for you!



"Service is my business"

CAMDEN GAS AND OIL CO., INC.
DISTRIBUTOR
CAMDEN, S. C.