

Go After the Business.

Small towns complain that big cities draw all the business from rural communities. This is a mistaken idea. All over the country there are shining examples to prove that manufacturers, publishers, writers, motion picture producers, mill operators and numerous other productive enterprises are established, thrive and distribute their products more economically from a small town than from a populous center. The small town which will analyze its possibilities and then go after the business can build itself along sound industrial and commercial lines.

The Central Illinois Public Service Company of Springfield, Illinois, has issued a folder entitled "Fertile Fields for Factories." It has not waited for rural towns in Illinois to set forth their advantages, but is going ahead and showing how low production costs are possible in the communities in which it operates.

It shows the raw material, transportation and manufacturing resources in its territory and gives statements of executives from some of the country's largest manufacturing plants as to why they, as manufacturers, prefer a smaller city as a factory location. In every instance one of the main reasons cited is that living conditions in the small places average better than in a big city; there is a stronger community interest in the success of the industries; employees are of a more permanent nature and own their own homes, thus eliminating a large part of the costly labor turnover.

The Central Illinois Company is doing constructive work and setting an example which can be adopted with profit by wide-awake communities all over the country.

Sending Money Away.

We shall never be a rich state as long as we send so large a proportion of the money we get for tobacco and cotton to other states for bread and meat. The freight cost alone is a bigger tax than is imposed by the state or federal government. Until we raise our own hog and hominy our dollars will have legs and run away to the west to pay for meat, hay and flour.—Raleigh News and Observer.

Old Time Honesty.

There was a time, according to Judge Milledge L. Bonham, when the fact that a white man in South Carolina be brought to trial for stealing would be looked upon as a disgrace by everyone. Rare indeed were cases of larceny and similar crimes ever to be found on the dockets of South Carolina courts.

For years and years, the honor of a South Carolinian has been an honor above all reproach. Even the severest critic of our people would claim that while a South Carolinian might kill you, he would not tell you a lie, nor would he steal from you. That same thing applies in large measure to some of the original mountain settlements of Carolina today. Many a man in our mountains perhaps would not hesitate a moment to do personal harm of extreme violence to one who angered or opposed him, but leave your valuables out before the gaze of the whole neighborhood and they would be unmolested. Times may have changed in many localities, but this was certainly the former status.—Anderson Mail.

A Fast Baby.

Wilmington, N. C., Nov. 23.—A two months old baby that walks and eats the food usually assimilated by adults is that of T. L. Ruth, of this city, according to the father. Ruth says that although he is unable to explain it, the baby, a boy walks about when supported slightly and that he eats "heartily" of solid foods; never cries and is never sick.

A Speedy Trial.

Manchester, Eng., Nov. 23.—One of the shortest murder trials on record took place here today when Sam Johnson, 20, was sentenced to death after a sitting of four minutes, for the murder of Beatrice Martin, 23, at Stratford, near Manchester. Johnson pleaded guilty, and declined the aid of counsel.

The Cologne Cathedral, started in 1248 and not completed until 1880, carries the legend that the original architect sold his soul to the Evil One and haunted the edifice until it was completed.

Cat's-Eye Has Many Points of Beauty

The dictionary describes the cat's-eye as a "gem exhibiting opalescent reflections from within, like the eyes of a cat. Specifically a variety of chrysoberyl or a variety of quartz or chalcedony, inferior to this in brilliancy. It is cut en cabochon."

The distinguishing feature of the cat's-eye stone is the peculiar milky-white, bluish or greenish-white sheen which crosses and recrosses it with every play of the light as the gem is turned about. The explanation of this peculiarity is that the stone contains, packed in its depths, many closely-matted fibers of another strange mineral, familiar to us as asbestos. The thing that makes asbestos remarkable in the mineral world is that though it is rock, it does not crumble when crushed, but comes to pieces in the form of fibers. It is the streak of these fibers in the cat's-eye which causes it to reflect the light in its wavy lovely way, with every movement of the finger wearing it.

Of course, the beauty of the stone can also be greatly enhanced by the skill of the cutter. To say that the stone is cut "en cabochon" means that in this style of cutting the upper part of the stone is shaped like a low dome, and it brings out all the natural luster and color of opaque and translucent stones. Therefore, such stones as the garnet, turquoise, cat's-eye, etc., are usually cut in this way. The best cat's-eye comes from India and Ceylon.

In many places in the Sahara Desert, it is burning hot at noon and freezing cold at night.

TAX NOTICE

County Tax Books Open at Treasurer's Office October 15th

Notice is hereby given that the books will be opened for the collection of State, County and School Taxes from October 15th, 1925, to March 15th, 1926. A penalty of 1 per cent will be added to all taxes unpaid January 1st, 1926, 2 per cent February 1st, 1926 and 7 per cent March 15th, 1926.

The rate per centum for Kershaw county is as follows: Mills State Taxes 5 1-2 6-0-1 School 4 County Taxes 8 1-2 Hospital 3-4 School Taxes 3

Total DeKalb Township Road Bonds, for DeKalb Township, only 2 3-4 Dog tax \$1.25. All dog owners are required to make a return of their dogs to the County Treasurer, who is required to furnish a license tag. All dogs caught without the license tag the owners will be subject to a fine of Twenty (20.00) Dollars.

The following School Districts have special levies:

School District No. 1	23
School District No. 2	20 1/2
School District No. 3	23
School District No. 4	15
School District No. 5	8
School District No. 6	15
School District No. 7	17
School District No. 8	8
School District No. 9	4
School District No. 10	5
School District No. 11	15
School District No. 12	18
School District No. 13	8
School District No. 14	8
School District No. 15	8
School District No. 16	4
School District No. 17	8
School District No. 18	8
School District No. 19	8
School District No. 20	4
School District No. 21	23
School District No. 22	11
School District No. 23	8
School District No. 24	8
School District No. 25	6
School District No. 26	4
School District No. 27	8
School District No. 28	8
School District No. 29	8
School District No. 30	8
School District No. 31	8
School District No. 32	14
School District No. 33	8
School District No. 34	8
School District No. 35	8
School District No. 36	8
School District No. 37	8
School District No. 38	25
School District No. 39	8
School District No. 40	8
School District No. 41	8
School District No. 42	8
School District No. 43	4
School District No. 44	8
School District No. 45	8
School District No. 46	8
School District No. 47	8

The poll tax is \$1.00. All able-bodied male persons from the ages of twenty-one (21) to fifty (50) years, both inclusive, except residents in incorporated towns, shall pay \$3.00 as a road tax except ministers of the gospel actually in charge of a congregation, teachers employed in public schools, school trustees, and persons permanently disabled in the military service of the State and persons who served in the War Between the States, and all quarantine service of this state and all residents who may be attending school or college at the time when said road tax shall become due. Persons claiming disabilities must present certificate from two reputable physicians of this county. All information with reference to taxes will be furnished upon application.

D. M. McCASKILL, County Treasurer.

NOTICE OF LOST CERTIFICATE

Notice is hereby given that Certificate No. 135 for five shares of Series No. Fourteen of the Enterprise Building and Loan Association stock, in favor of Russell Reynolds has been lost, and that after due publication of this notice I will apply for a duplicate certificate of said five shares.

RUSSELL REYNOLDS, Camden, S. C., Nov. 10, 1925.

666

is a prescription for Colds, Grippe, Flu, Dengue, Bilious Fever and Malaria. It Kills the Germ.

BAND CONCERT IN SUMMER.
United States Navy Band to Give Two Concerts December 2nd.

The United States Navy Band of Washington, D. C., the great organization that plays at all White House receptions when the President entertains, and accompanies the President when he is on official tours on the Presidential yacht, the Mayflower, is making its first tour of the South by special permission of the officials of the Navy Department. This tour was authorized in order that the people of the Southern States might have an opportunity to become acquainted with one of the really great musical organizations of America.

Through the efforts of the Sumter Rotary Club Sumter was selected as one of the few places in South Carolina to be included in the itinerary of the band. The Rotary Club guarantees the expenses of the band, and if there is any surplus over and above the guarantee, the Sumter High School Band will receive the entire sum. The guarantee is only \$1,250, for the two concerts, and as the large new auditorium of the High School has a seating capacity of 1,240 it is hoped to realize sufficient from the concerts to provide a fine equipment for the school band. Owing to the large capacity of the auditorium the admission charge has been made lower than usual. For the afternoon concert the charge for school children is only 50 cents, for adults \$1.00. For the night concert the admission is \$1.50. All music lovers of this section of the State are cordially invited to attend this delightful musical event.

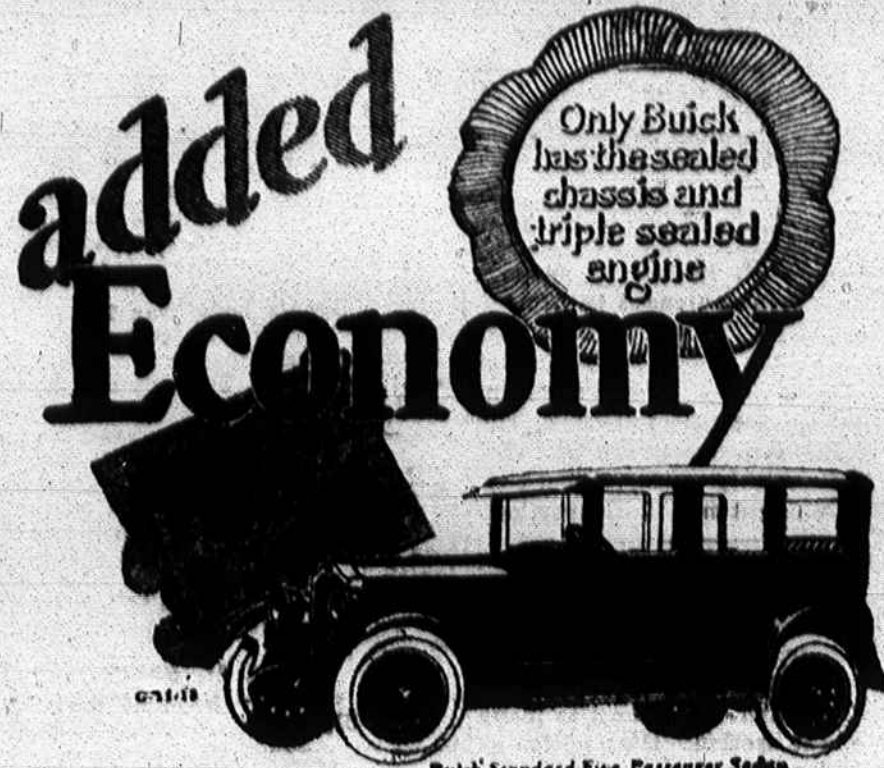
Squirrel Uses Wires as Overhead Highway.

A telephone wire might be termed a public highway, but rather a highway of speech than one for transportation.

However, this fact does not seem to be generally known, at least not among our animal friends. From Wilmington, Del., comes the story of a squirrel that travels a mile every day by telephone wire for its meals, crawling all the distance along the wires. William Krause, a grocer, some little time ago coaxed the squirrel down from a telephone pole by offering it nuts, and since then the squirrel has made its appearance every day. Out of curiosity, Krause followed it one morning and found that its nest was in the woods fully a mile distant.—Telephone News.

Fatal Death Pact

Cincinnati, Nov. 20.—William Strauss and James Albert Rosenberg, seventeen-year-old Cincinnati high school boys, drove to a quiet spot in



Better Buick operating costs are very low. This car is thrifty—both in purchase price and in ownership.

Buick design protects all operating parts from dust and wear—barricades them with iron or steel housings in the famous Buick "Sealed Chassis" and "Triple Sealed Engine".

The famous Buick Valve-in-Head engine develops

more power from a given quantity of gasoline than other types of engines.

And now, the Buick oil filter makes it necessary to change crankcase oil only at rare intervals.

Even smaller, less powerful cars do not match the Better Buick in low cost of operation and maintenance. You add to your power to economize when you buy a Better Buick!

BUICK MOTOR COMPANY, FLINT, MICHIGAN
Division of General Motors Corporation

the Better BUICK
LITTLE MOTOR COMPANY
T. LEE LITTLE, MANAGER, CAMDEN, S. C.

Clermont county, late yesterday and shot themselves through the head, after signing a death pact in which it was declared "life is not worth the effort to live."

Strauss died almost instantly. Rosenberg was taken to a Cincinnati hospital where it was said he has a chance for recovery.

A lengthy preamble and agreement to commit suicide bearing the signatures of both boys, was found in the pocket of Strauss' coat. At the bot-

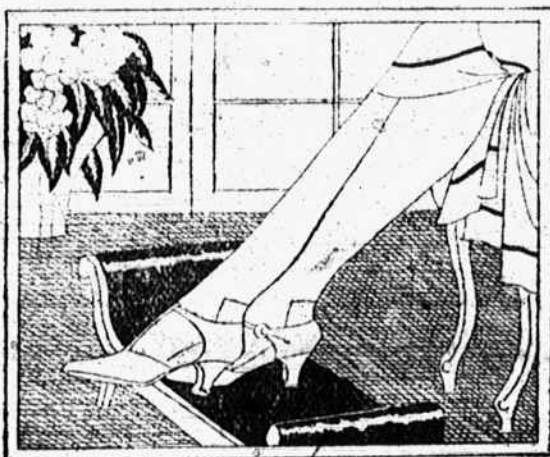
tom of the paper was written "signing off."

Relatives were unable to account for the young men's desire to end their lives, as both were declared to be of cheerful turn of mind.

Rosenburg is the son of a department store proprietor and Strauss' father is president of a local mortgage company.

The motor vehicle and the airplane bid fair to surpass the camel, ancient ship of the Sahara Desert.

HEADQUARTERS FOR DURABLE-DURHAM HOSIERY



The "Seamy Side" of Your Silk Hosiery!

TENDER feet often rebel against seams. These flawless hose of shimmering silk and lustrous Rayon have no seams in toe, sole or heel. Seamed back, tailored leg; 48 changes in the number of stitches between calf and ankle assure permanent fit. "DAPHNE", pure thread silk, \$1; style "PERIWINKLE", pure silk reinforced with soft finish Rayon, \$1.

DURABLE-DURHAM HOSIERY for Men—Women—Children
Mercerized and Cotton Hosiery, 15c. to \$6c.
Silk Hosiery, 75c. to \$2.00

Made by the world's largest hosiery manufacturer, operating 18 modern mills. Production of 90 million pairs yearly saves 7 1/2% in factory costs. This saving is passed on to you in added quality—and at least 20% more wear. Every pair doubly guaranteed—replaced free of charge if you are not entirely satisfied.

Wolfe-Eichel Company
CAMDEN
South Carolina

Garages and Machine Shops

- | | | |
|--------------------|--------------------|-----------------------|
| Brushes, Wire | Ezy-Outs | Screws, Cap, S. A. E. |
| Belts, Fan | Frames, Hack Saw | Screws, Cap Standard |
| Belt, Leather | Files, All Kinds | Screw Plates |
| Blades, Hack Saw | Graphite Grease | Socket Wrenches |
| Cans, Oil | Hose, Gasoline | Solder, Acid Core |
| Carbon Remover | Hose, Air | Stands, Emery |
| Cloth, Emery | Hose, Water | Taps, Machinist |
| Compound, Grinding | Jacks, Automobile | Torches, Blow |
| Dressers, Emery | Lockers, Belt | Vises, Garage |
| Drills, Electric | Pliers | Vises, Machinist |
| Drills, Twist | Pullers, Crane | Vises, Pipe |
| Drills, Breast | Reamers, Critchley | Waste, White |
| Drill Presses | Reamers, Taper Pin | Wheels, Emery |
| Dust, Emery | Screw Drivers | Wrenches, all kinds |

COLUMBIA SUPPLY COMPANY
623 West Curvair St. Columbia, S. C.



EASY MONEY

Easy Money is usually the kind that easily gets out of your pockets and not into them. But the kind of money that will make your life easier is the money that you have laid up in the savings account of this bank.

The First National Bank