

Social and Personal News

By Miss Louise Nettles

Meeting of Civic League.

This important organization, having for its slogan, "The City Beautiful," met at the Library Monday afternoon with the president, Mrs. Edwin Muller presiding, and the secretary, Miss Louise Nettles discharging the duties of that office. The names of Mrs. Baruch, and Mrs. Harry Baum had been left off from the tree committee, and the error was corrected in the minutes of last meeting. This committee reported that work on trees had not been going on recently, but hoped soon to resume it. Mrs. Alexander reported that flowers had been sent to the hospital, and especially to the wards, as they did not want these neglected. The League expressed much interest, love and sympathy in the illness of their first vice president, Mrs. William

Shannon, and the committee was requested to send special flowers to her room, with a message of love and sympathy. The name of Mrs. N. R. Goodale was added to the flower committee. The stand in front of the library was reported in a bad condition and corresponding secretary asked to confer with the city council in regard to it. Mrs. Ancrum moved that the League plant more yucca, as these plants were tropical in appearance and quite an adornment to the parks and streets. The park committee consists of Mesdames J. S. Rhame, G. G. Alexander, A. C. Abernethy, William Shannon, E. C. Villeplague, W. J. Dunn, and Miss Matie Gerald. The president read a letter asking for the aid and interest of the League, in the proposed Woman's building at the University of South Carolina. This was heartily given, and a committee consisting of Mrs. James Burns, and Mrs. R. M. Kennedy, Jr., appointed to see our representatives in regard to their vote. Mrs. Von Tresekow moved that the reciprocity meeting usually held in February be held this year at the regular December meeting, as Mrs. Munsell of Columbia is to address the League at that time on Woman's Work. The motion carried, and the reciprocity meeting will be held December 13th at the home of Mrs. John S. Lindsay. All well-fare works, all teachers and the following organizations are invited to attend. The John D. Kennedy Chapter, U. D. C., Hobkirk Hill Chapter, D. A. R., Camden Music Club, Kirkwood Book Club, and Winthrop Daughters. The Civic League will be hostess. A membership committee, consisting of Mrs. N. R. Goodale and Mrs. C. P. DuBose, was appointed by the president; this committee will solicit members for the League.

Meeting of Hobkirk Hill Chapter.

Mrs. Edwin Muller was a charming hostess to the Hobkirk Hill Chapter for the November meeting. The rooms of the Maize, always inviting and attractive, were particularly so on this afternoon, with vases and bowls of cut flowers adding their beauty and aroma to the occasion. The Regent, Miss Minnie Cleburn presided, and the hostess had double duty that afternoon, as she is chapter secretary. Mrs. Muller was also on the programme, and read a delightful and entertaining original paper on "A recent visit to Princeton." A sketch of the life of Pamela Cunningham, the founder of the Mount Vernon Association, and we are proud to claim as a South Carolina woman,

was read by Mrs. E. C. von Tresekow. The programme was in charge of Mrs. E. C. Zemp, and she invited Mrs. A. J. Beattie, and Mrs. John Smith from the Music Club to take part with a beautiful piano selection, and with Mrs. Beattie gave a duet that was well received and much enjoyed. The report for the State Conference, which meets in Anderson on the 16th was gotten up and showed the work and standing of Hobkirk in a most flattering light. The delegation from any of Camden's organizations can hold their own on the floor of a State Convention and the delegates from Hobkirk Hill will have a splendid report to take up next week. Mrs. Muller served delicious refreshments during the afternoon. The Misses Phelps will be hostesses for the December meeting.

PERSONAL MENTION.

Mrs. James Burns was among the visitors to Columbia last week. Mr. E. N. McDowell left Sunday for Atlanta, where he will make his headquarters for a time. "Ned," will be greatly missed by the Chronicle force, for he was ever bright, genial, up-right and just, and a general favorite. Camden can ill-afford to lose young men of his stamp, and we trust that the "wheel of fortune" may take a lucky turn and bring him back to his home town, where he numbers his friends by those who know him. Mrs. Robert Marye spent the week-end in Charleston. Mr. and Mrs. Marvin, and Miss Dorothy Marvin, have returned to Camden for the winter, and Hobkirk Inn, one of Camden's beautiful and popular resorts will be open next week. Miss Minnie Clarke is visiting in Columbia. Miss Sallie Young, who is teaching the Crescent school near Blaney, spent the week-end with her parents, Mr. and Mrs. L. L. Young, at Cantey. Mrs. S. Walter Parker is in Charleston this week attending a meeting of the Woman's Missionary Society of the Baptists. She went as a delegate from the Camden church. Messrs Caleb Ticknor and Ben Ticknor, of the Court Inn, have come down from Great Barrington for the winter season.

Missionary Society to Meet.

The Woman's Missionary Society of the Camden Baptist Church will meet with Mrs. G. W. Hall on Tuesday afternoon, November 16th at 4 o'clock. Visitors are cordially invited to attend.

PLANS FAST TRAIN

Seaboard "Florida Limited" Goes on In January.

The first run of the Seaboard Air Line's fast train "de luxe" between New York and Florida, the "Florida Limited," will be made leaving New York January 3 according to N. G. Ledbetter, travelling passenger agent of the Seaboard in Columbia. The first trip north will be made leaving Miami, Fla., January 5 and passing Columbia on January 6. The "Limited" will pass Columbia on its initial run south on January 4.

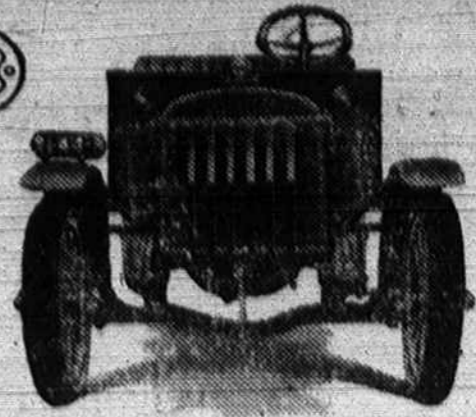
The "Florida Limited," which includes train No. 9 southbound from New York and train No. 10 northbound from Florida, is one of the best equipped trains operated on any line in the South and is designated especially to accommodate tourist travel from New York, Washington and other northern points to the Florida coast resorts. One club car, combination section drawing room cars, dining car, and a six compartment observation car, are carried by the "Limited," furnishing the latest travel accommodations. No extra charge is made for tickets on the special which is an all pullman, all steel coach train.

The "Florida Limited" will be operated on a new schedule this year. Train No. 9, southbound, leaves New York at 6:20 o'clock at night, reaching Washington at 12:01 o'clock the following morning and arriving in Miami at 11:30 o'clock in the morning. Train No. 10 will make the return trip, leaving Miami at 6:50 o'clock at night, reaching Washington at 6:20 o'clock at night.

Tourists travel to Florida and other Southern resorts has already begun. Mr. Ledbetter says and indications are now that the records of all previous seasons will be equalled if not surpassed. The prospects for a good season at Camden, which is on the Seaboard Lines, are also unusually bright. Mr. Ledbetter thinks. Tourists have been arriving regularly at this South Carolina resort during the last few days—Wednesday's State.

Birthday Party

Little Miss Meta Mogulescu celebrated her fifth birthday on November 8th by a party. Eighteen of her little friends were present to enjoy the occasion with her. The rooms were prettily decorated with pink and white.



Four models for 2000, 3000, 5000 and 7000 pound service. Pneumatic tires optional at extra cost on all models.

The Real Meaning of Transport

Transport means "The Frictionless Truck" with the added strength of nickel steel wherever feasible, and a lubrication system that's a real work saver. It means sturdy power with great reserve for every need.

You get with it the experience and mechanical skill of our modern service department. We keep your truck in the profit-earning class every working day of the year.

That is the real meaning of Transport. The fact that so many sales are repeat orders from Transport owners proves that Transport service is appreciated. Call on us.

WEST MOTOR COMPANY
Camden, S. C.

**TRANSPORT
INTERNAL
GEAR DRIVE
TRUCKS**

Mrs. Llewellyn Complimented.

Mrs. W. B. Allred was a gracious hostess Wednesday Morning at a bridge party given in honor of Mrs. Stanley Llewellyn, who is leaving this week with her husband to make their home in Boston. A profusion of yellow chrysanthemums effectively arranged with numerous ferns made the rooms quite attractive. The score prize went to Mrs. Vernon McDowell and the honor guest was presented with a pretty reminder of the occasion. The hostess served ice cream, cake and bon-bons.

Mrs. Edwin Muller as Hostess.

The Kirkwood Book Club was charmingly entertained Thursday morning by Mrs. Edwin Muller. The hours were pleasantly passed in the discussion of books, and chatty, breezy talk.

for the members of this club are all good talkers, "Who do not stick on Conversation burrs, nor straggle their pathways with those dreadful 'urs.'" Delicious sandwiches, tea and cookies were served.

Library Association to Meet

The above Association will meet at the Library Monday, November 15 at 4:30 o'clock. Members are urged to come as the meeting is important. The room committee is expected to make a definite report about the Library, being closed the first week in December for painting.

Buy your Fisk Tires from the Carolina Motor Co., Inc., Camden, S. C. Mr. Nettles Lindsay spent the week-end in Charlotte.

Buy your Fisk Tires from the Carolina Motor Co., Inc., Camden, S. C.

A BIG FUNERAL

Old "high prices" buried deep—you can rest in peace for 13 days, knowing that for 13 days you can buy Men's Suits, Overcoats, Shirts, Underwear, Hats, Etc. at prices that will open your eyes. The entire stock of new Fall and Winter merchandise has been turned over to the Syndicate Sales Agency with instructions to get the cash regardless. Below are listed a few of the many real bargains that included in this sale. Positively no goods reserved. Sale starts Saturday, November 13th, at 9 A. M.

<p>MEN'S SUITS</p> <p>\$35.00 value \$27.65 \$42.50 value \$31.85 \$50.00 value \$38.65 \$55.00 value \$42.35 \$65.00 value \$51.75 \$75.00 value \$57.85</p> <p>MANHATTAN SHIRTS</p> <p>\$3.00 value \$1.98 \$3.50 value \$2.65 \$4.00 value \$3.10 \$5.00 value \$3.85 \$7.50 value \$4.35 \$10.00 value \$7.85 \$12.50 value \$9.98</p> <p>MEN'S OVERCOATS All new goods at a real Bargain. \$32.50 to \$45.00</p>	<p>BOYS UNDERWEAR</p> <p>\$3.00 Value No. 8 \$1.50 \$3.00 Value No. 10 \$1.50 \$3.50 Value No. 12 \$1.65 \$3.50 Value No. 14 \$1.65 \$3.50 Value No. 16 \$1.65 \$3.50 Value No. 18 \$1.65</p> <p>WINTER UNDERWEAR</p> <p>\$3.50 Union Suits \$2.15 \$5.50 Union Suits \$3.65 \$6.50 Union Suits \$4.35 \$8.50 Union Suits \$6.30 \$9.00 Union Suits \$7.10 \$10.00 Union Suits \$7.85</p> <p>PAJAMAS</p> <p>\$3. to \$3.50 Value \$2.15 \$15.00 Value \$11.75</p> <p>Night Shirts Flannels \$2.15</p>	<p>MEN'S HOSE</p> <p>40c value, four for \$1.00 60c value 40c 75c value 53c \$1.00 value 70c \$1.50 value \$1.17 \$2.00 value \$1.30</p> <p>MENS' TIES</p> <p>.75 Value45 \$1.00 Value65 \$1.50 Value98 \$2.00 Value \$1.30 \$3.00 Value \$2.05 \$4.50 Value \$3.25</p> <p>SUIT CASES</p> <p>\$22.50 Value \$16.10 \$42.50 Value \$31.65 Trunks All Fibre \$26.00</p>	<p>BATH ROBES</p> <p>\$10.00 Value \$7.00 \$13.50 Value \$9.25 \$18.50 Value \$13.40 \$20.00 Value \$16.30 \$22.50 Value \$17.65</p> <p>MENS' GLOVES</p> <p>\$3.50 Value \$2.10 \$4.00 Value \$2.98 \$5.00 Value \$3.98 \$7.50 Value \$5.10 \$9.00 Value \$6.10 \$12.50 Value \$8.95</p> <p>MEN'S CAPS</p> <p>\$2.50 value \$1.65 \$3.50 value \$2.40 \$4.00 value \$2.98 \$5.00 value \$3.65 \$5.50 value \$4.15</p>	<p>MEN'S HATS</p> <p>\$5.50 value \$3.98 \$6.00 value \$4.15 \$7.50 value \$5.20 \$8.00 value \$5.35 \$11.50 value \$9.65 \$16.50 value \$10.98 \$18.50 value \$12.98</p> <p>MENS' SWEATERS</p> <p>\$7.00 Value \$4.30 \$10.00 Value \$7.15 \$12.50 Value \$8.35 \$18.50 Value \$13.85 \$22.50 Value \$17.35 \$25.00 Value \$19.85</p>
---------------------------------------------------------------------------------------------------------------------------------------------------------------------------------------------------------------------------------------------------------------------------------------------------------------------------------------------------------------------------------------------------------------------------------------------------------------------------------------------------------------------------------------------------------------------------------------------------------------------------------------------------------------------------------------------------------------------------------------------------------------------------------------------------------------------------------------------------------------------------------------------	-------------------------------------------------------------------------------------------------------------------------------------------------------------------------------------------------------------------------------------------------------------------------------------------------------------------------------------------------------------------------------------------------------------------------------------------------------------------------------------------------------------------------------------------------------------------------------------------------------------------------------------------------------------------------------------------------------------------------------------------------------------------------------------------------------------------------------------------------------------------------------------------------------------------------------------------------------------------------------------------	-----------------------------------------------------------------------------------------------------------------------------------------------------------------------------------------------------------------------------------------------------------------------------------------------------------------------------------------------------------------------------------------------------------------------------------------------------------------------------------------------------------------------------------------------------------------------------------------------------------------------------------------------------------------------------------------------------------------------------------------------------------------------------------------------------------------------------------------------------------------	---------------------------------------------------------------------------------------------------------------------------------------------------------------------------------------------------------------------------------------------------------------------------------------------------------------------------------------------------------------------------------------------------------------------------------------------------------------------------------------------------------------------------------------------------------------------------------------------------------------------------------------------------------------------------------------------------------------------------------------------------------------------------------------------------------------------------------------------------------------------------------------------------------------------------------------------	----------------------------------------------------------------------------------------------------------------------------------------------------------------------------------------------------------------------------------------------------------------------------------------------------------------------------------------------------------------------------------------------------------------------------------------------------------------------------------------------------------------------------------------------------------------------------------------------------------------------------------------------------------------------------------------------------------------------------------------------------------------------

From Saturday, November 13, to Saturday, November 27th inclusive.

**THE MEN'S SHOP
CAMDEN, S. C.**

From Saturday, November 13, to Saturday, November 27th inclusive.