

Subscription Rates: One year, \$1.00; six months, 75 cents; three months, 50 cents.

Business notices, 5 cents per line each in insertion.

Advertisements: Ordinary (100 per square inch) 10 cents; Extra (100 per square inch) 15 cents.

CAMDEN, S. C., MAY 2, 1907

The Chronicle is eighteen years old to-day.

The required number of names of freeholders praying for an election on the dispensary question has been secured.

The Pension Law.

A correspondent writing from Job to the Spartanburg Journal states that J. R. Westmoreland now living and two of his sons entered the Confederate army.

The county board have no means of investigating special cases. When papers are properly filled out they have to accept them, although the applicant may have made false statements.

Rodger Williams Porter.

"Behold an Israelite indeed, in whom there is no guile." Born near Ridgeway, Fairfield county, May 22nd, 1850, son of Rev. C. M. Porter.

Quarterly Purchases of Liquors, Beers and Wines by the Dispensary Board of Kershaw County, S. C.

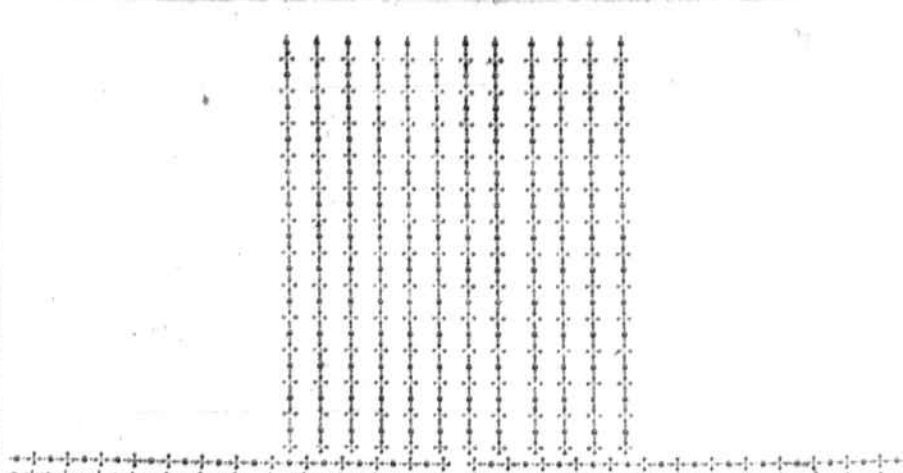
Table with columns: Name, Quantity, Price per Case, Total Price. Lists various liquors and wines from different suppliers.

VERY LOW RATES TO NORFOLK, VA., and Return, Account Jamestown Ter-Centennial Exposition Via SOUTHERN RAILWAY.

Season, sixty day and fifteen day tickets on sale daily commencing April 19th, to and including Nov. 30th, 1907.

SAY, MR. FARMER.

Suppose the dealer, from whom you purchase your fertilizers, would say to you that if you would pay him an additional seventy-five cents per ton...



"The Big Store."

Most elaborate showing of Easter Novelties and special prices in every department to make a big, busy week.

Business is a power. Ours is probably the largest store in the City that has its advantages, because we buy in big quantities and save thousands of dollars worth of Merchandise in every line every year.

SILKS, SILKS

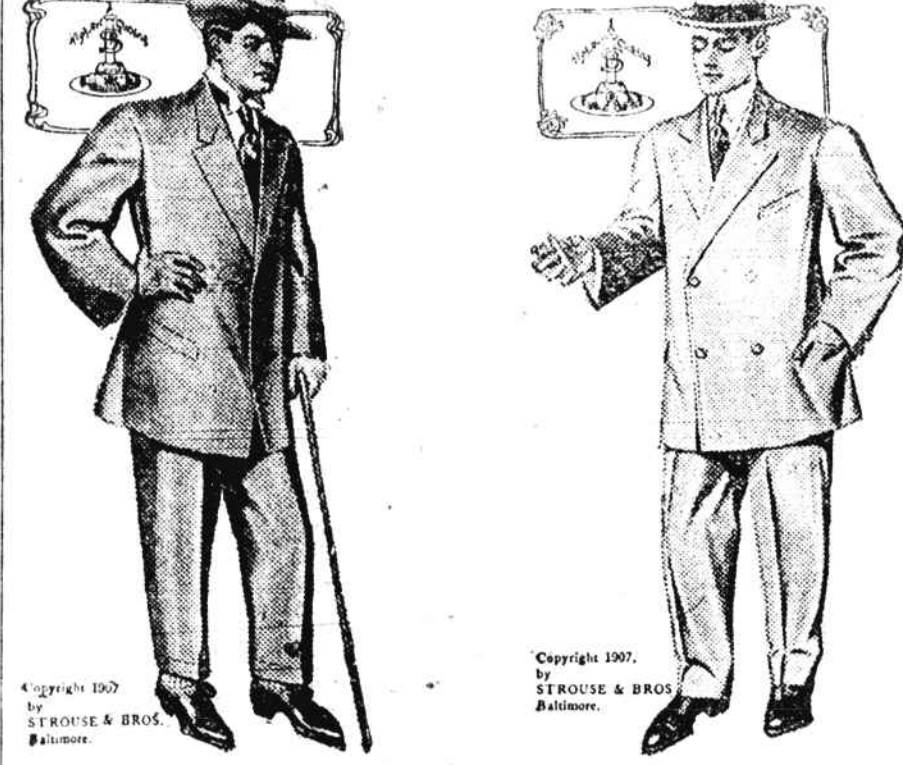
Of which we can show all the newest weaves and patterns to be seen at remarkable low prices, as we bought them before the advance.

EMBROIDERY & LAWNS.

We import them ourselves, and retail them at wholesale prices. We can save you 25 per cent by buying from us.

Millinery, Millinery.

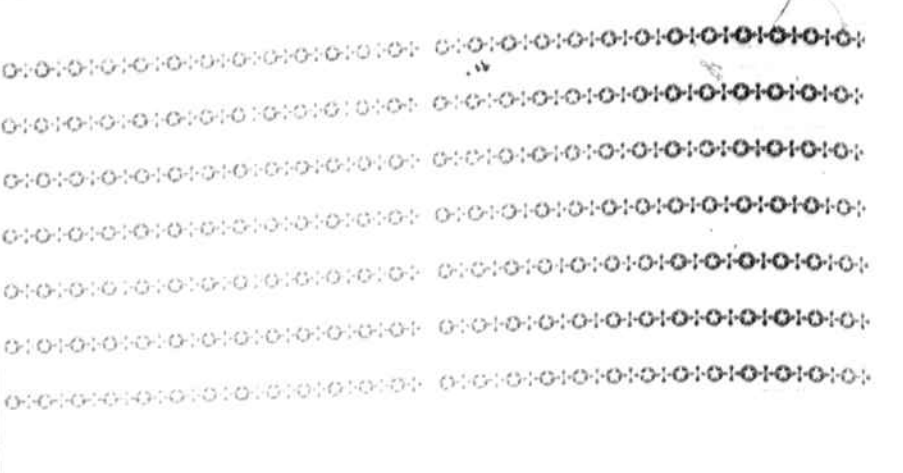
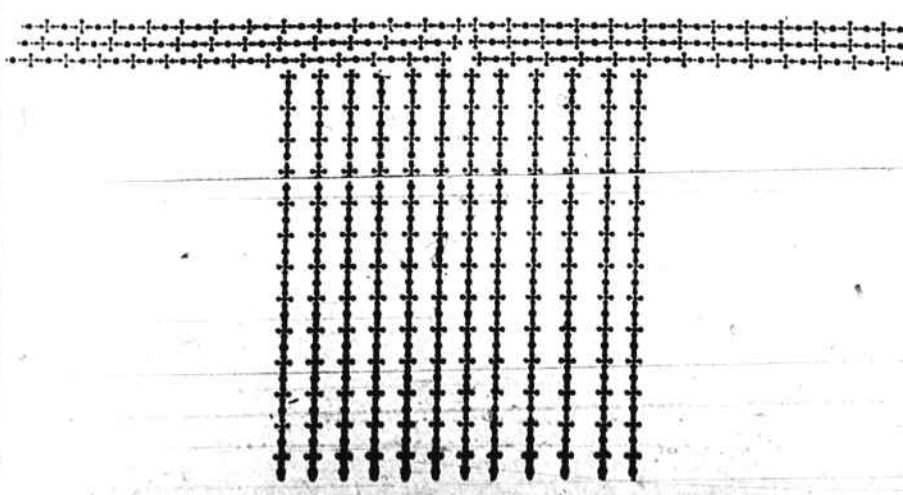
We carry the largest and most up-to-date line of Millinery in the city. We are receiving daily by express all the new styles that's to be had.



READY FOR YOUR SPRING SUIT?

Splendid Time To Pick It Out. The spring rush for new clothes will soon set in and every body will want everything right away.

Hirsch Bros. & Co.



Grand Display of Spring Goods AT THE FAMOUS GILT EDGE STORE

We are now showing a beautiful line of Spring Goods of all kind, white goods in great variety and at the old price—these goods have advanced but we bought early and can save you money in this line.

Immense line of White Goods and Wash goods. We always show the newest and most up-to-date patterns at most moderate prices.

Dress Goods.

In our Dress Goods Department we are showing a beautiful lot of Wool Goods in greys, plaids, etc., and a specially nice line of black Wool Goods.

We call special attention to our lovely line of Printed Silk Tissues, Figured Organdies and Novelties in Mercerized Yarns.

Wash Goods! Wash Goods!

We have selected this line with great care, and can show you one of the prettiest lines of Gingham, Percales, Printed Madras, Batistes, Etc., in the city.

Notions, Notions!

In this Department you will find the newest things in Ladies Belts, Collars, Fancy Neckwear, Laces and Embroideries, Ribbon, and all the small wear that belong to this line.

"Star Brand Shoes Are Better."

We have these celebrated shoes in Ladies, Children, Mens and Boys in low cuts or high in Patent Leather, Vici, Box Calf and Gun Metal. These shoes give "SATISFACTION."

Farm Supplies And Fertilizers.

We are agents for the F. S. Royster Fertilizers, and are handling all the high grade mixtures, Acid, Potash, Nitrate Soda, Etc. Lowest cash prices or on approved paper.

Yours Respectfully,

The Famous Gilt Edge Store,

