

Local Items

Miss Margaret Ladd left Monday for Agnes Scott college.

Campbell Laney left this week for the University of S. C. and Wilson Laney for Georgia Tech.

Mrs. G. C. Hinson and little son spent the week end with relatives in Hamlet, N. C.

Mr. Wilson McCright spent a few days in Dillon this week.

Misses Harriet and Page Godfrey, Susie Moore Lindsay and Fannie Poston left Friday of last week for Winthrop college.

Mr. R. N. Stricklin, of Columbia, spent Sunday at home.

Donald Matheson and Malloy Evans left this week for Presbyterian college at Clinton, S. C.

Mrs. Earle H. Graves, of Columbia, is visiting her parents, Mr. and Mrs. J. N. Stricklin.

Miss Nora Stubbs spent the week end with friends in Rockingham, N. C.

Mrs. B. W. Spencer and Miss Annie Coward, of Darlington, spent the week end at the home of their father, Mr. A. B. Coward.

The many friends of Dr. L. E. Bull will be pleased to learn that he will return home next Monday, from an extended visit in North Carolina health resorts.

Steven Dukes, of Jacksonville, Fla., is the guest of his aunt, Mrs. V. H. Kendall.

Emsley Ingram, who has been making his home in Jefferson, will spend the winter with his father, Mr. E. G. Ingram and attend the Cheraw graded school.

Mrs. J. C. Dockery and little daughter Virginia, of Wadesboro, N. C. spent Wednesday with Mrs. Dockery's aunt, Mrs. J. N. Stricklin.

Mr. R. H. Johnson, of Richmond Va., spent Monday in the city.

Mr. Thurlow Beik, of Badin, N. C. is visiting relatives in the city.

Misses Etta Powe and Fannie Duwall spent a few days in Columbia this week.

Miss Wiggins, of Denmark, spent Sunday with her sister, Miss Vera Wiggins.

Misses Sallie and Eva Cauley spent the week end at Hamlet with relatives.

Mr. J. A. Spruill was called to Roanoke, N. C., last week on account of the death of his mother.

Miss Lucile Hurt left Monday for Coker college.

Miss Lucile Poston, who has been working in Darlington for sometime, has returned home.

Quite a crowd attended the Minstrel show in Bennettsville Tuesday night.

Rev. J. B. Hartsell left Monday for Arden, N. C., where he will teach this year.

Mrs. W. T. Thrower entertained a porch party Tuesday afternoon in honor of the school teachers.

A charter has been granted to the Chesterfield Brick company of Chesterfield. The capital stock is \$25,000. The officers are J. W. Moore, president and R. S. Moore, secretary and treasurer.

The Flower Shop's play given by local talent on Thursday and Friday evenings, August 19th and 20th in the city hall, under the auspices of the Cheraw Civic League, was a success both from a standpoint of attendance and rendition. It is said those taking part did fine work and met with the hearty approbation of those who attended.

WOMEN REGISTER.

The women folk of Cheraw turned out in force yesterday to register and considerably more than 100 are now fully equipped to cast their vote in the coming general election.

Subscribe to the Chronicle.

C. COULTON
Optometrist.
Eyes Examined.
Glasses Fitted.
202 Main St. Columbia, S. C.
UP STAIRS.

WILL CHESTERFIELD BE ENTITLED TO THREE REPRESENTATIVES

Representative Elect L. C. Wannamaker cites the Law and the New Census May Give Us Three.

Cheraw Chronicle, Cheraw, S. C.
Dear Mr. Editor,

The writer has been asked by a number of people about the probability of the representation of Chesterfield County in the House of Representatives being increased to the three members. Believing the matter of interest, I herewith quote our State Constitution of 1895: "Art. 111, Section 3. Number of Members—Enumeration of Inhabitants. The House of Representatives shall consist of one hundred and twenty-four members, to be apportioned among the several Counties according to the number of inhabitants contained in each. Each County shall constitute one Election District. An enumeration of the inhabitants for this purpose shall be made in the year nineteen and one, and shall be made in the course of every tenth year thereafter, in such manner as shall be by law directed: Provided, That the General Assembly may at any time, in its discretion, adopt the immediately preceding United States Census as a true and correct enumeration of the inhabitants of the several Counties, and make the apportionment of Representatives among the several Counties, and make the apportionment of Representatives among the several Counties according to said enumeration." "Art. 111, Section 4. Assignment of Representatives.—In assigning Representatives to the several Counties, the General Assembly shall allow one hundred and twenty-four part of the whole number of inhabitants in the State; Provided, That if in the apportionment of Representatives any County not to be entitled, from its population, to a Representative, such County shall, nevertheless, send one Representative; and if there be still a deficiency in the number of Representatives, required by Section third of this Article, such deficiency shall be supplied by assigning Representatives to those Counties having the largest surplus fractions."

The preliminary announcement of the fourteenth census for Chesterfield County, (which is subject to correction), gives us 31,969 inhabitants. In 1910 we had 26,901 inhabitants. Our present population is three 124ths of 1,321,385, and we will be entitled to three Representatives if the Census for the State of South Carolina gives the State a population of less than 1,321,386. And possibly we may be entitled to another Representative if the State Census does not exceed greatly the above-mentioned figure. Let's watch for the population figure for our State!

Yours very truly,
Signed: L. C. Wannamaker.

MRS. SARAH ANN WANNAMAKER

Orangeburg, Sept. 10.—Mrs. Sarah Ann Wannamaker, widow of the late Rev. Thomas Elliott Wannamaker, died here last night at 9:30 o'clock at the residence of her son, Capt. W. W. Wannamaker, after an illness of about ten days. The funeral services were held this afternoon at St. Paul's Methodist church. A large concourse of relatives and friends attended the services at the church and witnessed the last rites at Sunnyside cemetery where the remains were laid to rest beside those of her late husband. Numerous floral offerings gave evidence of the great love and esteem in which the deceased was held by the community.

Mrs. Wannamaker before her marriage was Miss Sarah Ann Boyd, eldest daughter of the late Rev. Dr. R. J. Boyd. She was born in this county on September 26, 1831, where her father practiced medicine for several years. She was married to the Rev. T. E. Wannamaker on September 2, 1850, and to whom 11 children, five of whom survive, as follows: Mrs. J. M. Keller of this city, Dr. Theodore E. Wannamaker of Cheraw, T. Herbert Wannamaker of Columbia, Dr. E. J. Wannamaker and Capt. W. W. Wannamaker of this city. Also surviving are 31 grandchildren and 39 great grand children.

Mrs. Wannamaker was well known and greatly loved in various sections of South Carolina, her late husband having been for 41 years a prominent member of the South Carolina Methodist conference and having served various charges in different parts of the state. After the death of her husband on April 7, 1910, Mrs. Wannamaker divided her time at the homes of her different children.

Electric Globes at Hurrell's Hardware store.
The Chronicle \$1.50 a year.

For Rent
6 Room House. Apply
Chronicle Office

People Read This Newspaper

That's why it would be profitable for you to advertise in it

If you want a job
If you want to hire somebody
If you want to sell something
If you want to buy something
If you want to rent your house
If you want to sell your house
If you want to sell your farm
If you want to buy property
If there is anything that you want the quickest and best way to supply that want is by placing an advertisement in this paper

The results will surprise and please you

A carload of
HULSON AND ESSEX CARS
expected in a few days
Place your order at once
R. E. LANEY AND SONS

MONEY TO LEND

Money to lend on Improved Real Estate. Long time loans low rate of interest.
THOS. L. SMITH,
Attorney at Law.
Cheraw, S. C.

Ask Your Grocer For
CHEEK-NEAL'S COFFEES
Best By Every Test

R. P. BERRY
CIVIL ENGINEER AND SURVEYOR
Hartsville, S. C. Phone 297

Please communicate with me by letter or telephone at my expense.



Utilize This New and Better Light

A SIMPLE, low-cost means of electric lighting in places where electricity has heretofore been unavailable. For attic, closet, woodshed, barn, toolhouse, and all outbuildings. Fine on camping trips. Absolutely safe.

A Single Dry Battery of Many Cellpower

One portable compact package. No power-wasting connections—no short circuits—just 2 binding posts. We supply the lighting outfit complete—cord, socket, Mazda lamp, switch, and Hot Shot Dry Battery.

Cheraw Hardware & Supply Co.
Cheraw Motor Sales Co.
C. F. Pendleton
W. L. Tolson

Patent Pending Spring Clip Binding Posts on Columbia Cell No. 6; No Extra Charge.

Columbia Hot Shot Dry Batteries

You Can Expect More From Goodyear Tires

THESE GOODYEAR CLINCHERS in the smaller sizes for FORD—MAXWELL—OVERLAND—CHEVROLET and DORT cars are turning up astonishing mileage records every day.

Ask any of your friends who are using them.

And the best part of it is they cost no more than risky tires of questionable value.

Our free Service of Inspection and Advice enables you to get all the value out of GOODYEAR tires which has been built into them.

W. L. Tolson Garage

SHOE POLISHES

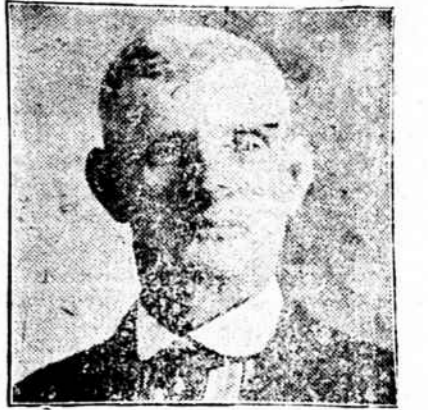
BEST FOR HOME SHINES
SAVE THE LEATHER
THE BIG VALUE PACKAGES

PASTES AND LIQUIDS For Black, Tan, or Black, Dark Brown and White Shoes
THE F. F. DALLEY CORPORATIONS LTD., BUFFALO, N. Y.

J. G. HALL THREW AWAY HIS CRUTCHES BECAUSE HE DID NOT NEED THE MATTER TAKING RE-CU-MA.

FOR SEVEN YEARS HE COULD NOT WALK WITHOUT THEM

The manufacturers of Re-Cu-Ma do not claim that it will work miracles, but here is a case where it actually put a man on his feet again after seven years' use of crutches. Everyone in Bellair, Florida, knows J. G. Hall and everyone has confidence in what he says. Many of his townspeople were witnesses of his act of throwing away his crutches after having taken seven bottles of Re-Cu-Ma. Mr. Hall on his crutches has been a familiar sight to his friends; he was almost bent double; in fact, he was so badly crippled with rheumatism that even some of his joints were dislocated and of course he suffered agony at all times, no relief at any time. Mr. Hall was thoroughly discouraged and felt that he would never be able to get around again like other men; he had spent a small fortune with doctors in many places, but without avail. He took one bottle and saw some help and was encouraged enough to take more and now, after taking seven bottles he feels practically cured. He has gained 32 pounds in weight and is able to work hard every day. He is employed as night watchman at the world famous Bellair hotel and takes an active inter-



est in Masonic and church work. Mr. Hall's remarkable cure should be a beacon of hope to others who are similarly afflicted, for naturally feel that Re-Cu-Ma can do as much for other sufferers. Try it today—we sell it on the guarantee that your money will be refunded if you do not feel benefited after taking it four days. It sells for \$1.29 plus war tax and can be had at Ladd's Drug store and all drug stores.

The Secret of a Superlative Tire

The whole question of a super-tire is a matter of principles. For there is nothing exclusive in the industry. No patents, no secret formulas prevent a conscientious maker from building the best.

But cost and competition modify ideals. The Brunswick idea is to pay perfection's price and get it.

That has been the Brunswick policy since 1845. And it accounts for the growing preference for Brunswick Tires. Motorists expect the utmost from a tire bearing the name of Brunswick—and get it.

You, too, will be convinced by your first Brunswick, that here is an extraordinary tire, and that more money cannot buy a better.

Better tires of their type are impossible—or better tubes. That we guarantee.

Try ONE Brunswick—learn how it excels.

THE BRUNSWICK-BALKE-COLENDER CO.
Atlanta Headquarters: 38 Luckie St.

BRUNSWICK TIRES

Sold On An Unlimited Mileage Guarantee Basis

The Standard Vulcanizing Co.

Real Estate

I offer my services to handle property, either city or farm lands, finding buyers or sellers on a strictly commission basis, without other advantages to me. Will appreciate your patronage.

C. S. LYNCH

This is the Plant With the Nation's Endorsement



Now farmers everywhere know which is the real farm plant. First the Army, then the nation settled it. Both official tests and farm service have proved the MARCO's infinite superiority beyond all question.

Farmers know that able engineers designed the MARCO when the Army demanded a BIG plant superior to any in existence. They know its surplus power—its greater capacity—its greater range of use. The MARCO with its specially built, multi-purpose, air-cooled "New-Way" engine is for all farm power needs outside the tractor class. Lights every building on the place and supplies engine or electric power. It will run machinery and charge batteries at the same time. Everything on one base. Engine recharged in 5 minutes with ignition for work on binder, or anywhere. Silent chain drive as in automobiles gives generator 2000 r. p. m. at slow engine speed 800 r. p. m. No over-speeding. No belt. Lever slows engine for light work. Automatic control of current. No puzzling meters. Self-starting. Simplest, strongest, most dependable plant made. Built like a fine automobile engine! Practically trouble proof! Lasts indefinitely! Come and see it before our allotment is gone.

Cheraw Electric & Plumbing Co.