

Notes From The County Agent's Office

By C. B. CANNON, County Agent

Gins Qualified To Take Cotton Samples

Six of the 17 gins of Laurens County have qualified to take Smith-Doxey samples of cotton according to a notice received from Ernest Riley, Field Representative of the Columbia office. Those gins qualified are: Clinton Milling Company and C. W. S. Guano Company, Clinton; Cook Ginning Company, Gray Court; Moore's Ginnery, Barksdale; Southern Cotton Oil Company, Laurens; Wasson Bros. Gin, Hickory Tavern; Also E. J. Poole's Gin, located at Enoree, Spartanburg County, but gins cotton from Laurens County.

Congress became concerned about improving the growers marketing position, and in 1937, enacted the Smith-Doxey Act. The purpose of this act is to encourage production of higher quality cotton and to improve marketing methods and practices. It directs the Secretary of Agriculture to provide free classification and market news service to organized groups of cotton growers. All cotton ginned at the above named gins will get free government grade and staple service furnished the grower with an unbiased classification of their cotton. Each farmer getting his cotton so classified receives through the mail from the classifying office in Columbia, a card showing his grade and staple and preparation of his cotton. Also this same grading will serve in placing cotton under the government loan without any further charges in so far as having cotton sampled. A charge of 2 cents is the usual charge to have cotton sampled where samples are not taken under the Smith-Doxey program.

Any ginner in Laurens County may qualify to render this service to the farmer on a volunteer basis. All giners were notified of this program several weeks ago.

Harvest Cotton To Good Advantage

Cotton harvesting is now getting under way in Laurens county. There will be no doubt many farmers who pick green or wet cotton and carry to the gin and become dissatisfied with his gin cut cotton, and no one to blame in most cases except himself. No gin is in operation that can take such cotton and make a good job in ginning. The so called driers, which are nothing more than conditioners, will be able to remove more than approximately four percent moisture from the cotton. Therefore, to get the highest quality staple, farmers should carry only well matured cotton to the gin. Cotton picked early in the morning when dew is on the plants should be spread out to dry. Some people picking by the bucket wish to hold the moisture to make the cotton weigh more. The same thing being true with farmers carrying cotton to gin damp in order to have a heavier bale. With such idea, a person loses more than he gains, especially the person owning the bale of cotton. When gin cut cotton reaches the buyer or mill, they are not going to be fooled in such handling. Gin cut cotton will carry much reduced price. Here is what happens: cotton buyers and mills penalize cotton that is of poor quality. In dollars and cents this penalty varies from \$1.50 to \$10.00 or more per bale, according to degree of roughness.

The solution of this cotton problem may be summed up as follows, as there are three people concerned in the bale of cotton: (1) Farmer's responsibility—take cotton to gin in good condition, clean and dry. (2) Ginner's responsibility—keep gin machinery in good repair and operate with loose seed roll in order to preserve quality of lint. (3) Cotton Buyer's responsibility—buy cotton on a quality basis. Unless the farmer realizes his responsibility when the ginner and cotton buyer will not be able to obtain their goal of responsibility. The serious thing is, the farmer is the loser every time when he fails to have his cotton in proper condition when he takes it to the gin.

Cotton Seed Support Price: The so-called support price on cotton seed that has been published in newspapers is not worth the time and paper it took to make such a statement, in so far as South Carolina cotton farmers are concerned. The requirements as set up to obtain the loan is not practical to the farmers of this state.

Don't be led to believe you are protected on seed prices as it now stands.

Garden Work for the Month

Planting of turnips, both rutabags and salad varieties should be planted at once. Stringless greenpod beans have time yet to produce before frost, if planted at once. Also beets and carrots may be planted, although a little late in the season.

Harlequin cabbage bugs, also attack collards, may be controlled by dusting with Sabadilla dust which is not poison to man.

HEAVY AND FANCY GROCERIES

We Deliver
H. J. PITTS STORE

As Washington Sees It... THE NATIONAL SCENE

Special to The Chronicle.

Washington, D. C.—Rather than see his farm program "so hamstrung that it would not work," Secretary Charles F. Brannan has asked the senate agricultural committee to eliminate all reference to his controversial farm plan from the senate farm bill. As a result the bill which came from the committee resembles in the main the house-passed bill which also had kicked overboard both the Brannan proposals and the Aiken farm law.

The senate bill picked up a few of the features now in the Aiken act, and no doubt the measure will wind up in a conference committee before final passage. As now constituted, the measure bears the imprint of former Secretary of Agriculture Clinton P. Anderson, senator from New Mexico.

The senate farm version calls for support of basic crops—corn, cotton, peanuts, rice, tobacco and wheat at 90 per cent of parity this year and reduction to as low as 75 per cent after 1950, if supplies become surplus. Milk and butterfat would be supported at 75 to 90 per cent. Wool, mohair, tung nuts and Irish potatoes will be supported at 60 to 90 per cent. All other farm products could be supported up to 90 per cent, while products which can be stored—oats, barley, rye and meats—would be supported at 90 to 75 per cent.

In the meantime the house continued to move ahead somewhat faster than the senate on the administration-supported measures, passed the minimum wage bill somewhat watered down and sent it along to the bogged-down senate. Final passage was on a roll call of 361 to 35. The bill would raise the national minimum wage from 40 to 75 cents and extend some other benefits to approximately 20 million workers.

For instance some of the amendments passed would exempt rural home workers who are unsupervised and make all the produce they sell; employees of newspapers with

circulation below 5,000; workers in small telephone companies serving up to 500 clients; sawmill operators who hire fewer than 12 persons. The term "workday" is defined to mean whatever a collective bargaining agreement says it does.

The house grew tired of waiting committee action on a joint house-senate lobby probe measure and passed its own bill providing for a house committee to investigate lobbying of both private organizations and governmental agencies.

The senate finally passed the big foreign aid appropriations bill with \$5,647,724,000, or about 10 per cent less than originally requested for use

in fiscal year 1950. The first thing the house did was to knock out \$544,000 which the senate had set up for use of an ECA watchdog committee.

Hearings on the military aid program, the B-36 probe and the investigation of "five percenters" continued to highlight the committee sessions. After the committee continually giped at him for about a week, the president's military aid, Maj. Gen. Harry Vaughan came through

with a statement asserting that he personally had given deep freeze units as presents to the little White House at Independence, Mo., one to the White House staff here and others to various others of his friends.

Observers here however, while deploring the embarrassment and the so-called officiousness of General Vaughan in behalf of his friends, point out that there has been no indication that any favors have been

granted to General Vaughan in return for his efforts. One observer said, "There is certainly nothing here to suggest a scandal on the proportions of Teapot Dome."

A COMPLETE SERVICE

We offer our customers a complete 3-in-1 Service — Advertising, Commercial Printing, Office Supplies. We can supply all your needs. **CHRONICLE PUBLISHING CO.**

I. D. CLARE

SOME MEN GET BLUE WHEN THEIR WIVES LEAVE... OTHERS ARE BLACK AND BLUE.



We all get "blue" when a member of the family is ailing. Health is happiness. May we help maintain the health and happiness of your family?

McGEE'S DRUG STORE
Phone No. 1

So Easy To Be Thrifty — Sew at Home and SAVE

SINGER

REBUILT ELECTRIC PORTABLE

LIBERAL ALLOWANCE ON TRADE-IN



Sewing Machines

- NEW MOTOR
- NEW 5-SPEED CONTROL
- NEW CARRYING CASE
- NEW SEW LITE
- 5-YEAR GUARANTEE

\$42.50

Easy Terms Arranged

Immediate Delivery

DON'T DELAY WRITE TODAY for Free Home DEMONSTRATION

CITY SEWING CENTER, Inc.
311 Peachtree, Atlanta, ALpine 0477

I would like a free home demonstration of your fully guaranteed rebuilt Singer Sewing Machine at no obligation to me.

Name

Address

City State

CITY REBUILT—PARTS—GUARANTEED

Count the EXTRA VALUES and you'll choose



CHEVROLET

EXTRA Values are exclusively yours at lowest cost in Chevrolet!



Fisher Body Styling and Luxury

with smooth, graceful curves, new interior richness and such extra luxuries as Push-Button Door Handles.



Fisher Unisteel Body Construction

with steel welded to steel above, below and all around you for the highest degree of solidity, quietness and safety.



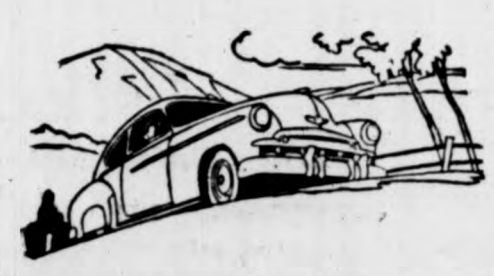
5-Inch Wide-Base Rims, plus Low-Pressure Tires

the widest rims in the low-price field—plus extra low-pressure tires—for greater stability and riding-comfort.



Certi-Safe Hydraulic Brakes

more outstanding than ever before with new *Dubl-Life* Rivetless brake linings that last up to twice as long.



Extra Economical to Own and Operate

and traditionally worth more when you trade; for it's America's most wanted car—new or used!



Curved Windshield with Panoramic Visibility

supplying all that extra vision which means extra safety in driving with a fuller, freer view.



World's Champion Valve-in-Head Engine

the extra efficient engine with the valve-in-head design that's setting the trend for the industry.



Longer, Heavier, with Wider Tread

the big car in the low-price field, with all the advantages of more comfort, stability and safety.



Center-Point Steering

with control centered between the front wheels for maximum driving-ease and minimum fatigue.

GILES CHEVROLET COMPANY, Inc.

Phone 26 West Main Street Clinton, S. C.

We're featuring Chevrolet Super-Service Specials all this month — so "ALL ABOARD FOR VALUES UNLIMITED!"