

# Katzoff is Going Out of Business

## Bargains in Every Department!

A call will convince you.

# Katzoff's Department Store

ABRAMS' OLD STAND

MANNING, South Carolina

### HOGGING DOWN CORN SAVES LABOR AND PROMOTES GAIN

Keeps Hogs in Good Condition, Distributes Manure Uniformly, Builds Up Run-Down Land, and Provides for a Simple and Profitable Rotation of Crops.

Thirty or forty years ago some shrewd farmers fell into the habit of letting their hogs run in the cornfield in September and October and allowing them to eat ears and stalks until all that remained could be plowed under.

Some also turned hogs into the rye in the spring and let them range on the tender and succulent stalks until they became too woody to be palatable. This process was termed "hogging down."

Labor Shortage Changes Methods. Then came a crusade for "clean farming"—typified by harvesting and shocking the corn stalks, husking the yellow ears and piling them into the cribs, later to be fed to the same hogs. "Hogging down" was decreed to be shiftless evasion of honest toil. The

"hogging down" farmers fell into disfavor and dropped the practice to a large extent.

Meantime, the labor market was tightening, and a day's work came to be regarded not so much as something to be gotten out of the farmer or his sons or a hired man, but as a period to be paid for in money that could be used for other purposes.

The United States Department of Agriculture and some of the experiment stations in corn States have of late years given careful attention to the possibilities of feeding stock on the cafeteria plan. Today it is in use on hundreds of Corn Belt farms and in many other localities in all parts of the country where corn is grown.

Hogging down corn saves labor, while causing no more waste than when the corn is harvested and hand fed. Properly managed, it keeps the hogs in better condition and adds weight more rapidly. It distributes manure uniformly. It leaves the ground in fair condition for the next crop, and it fits in with a rotation system admirably adapted to build up a run-down farm.

A Good Five-Year Rotation. A system that is widely used calls for fencing the farm into five parts—

six if you wish to retain a permanent pasture. Corn is planted in the first section and as soon as the kernels have become hard the hogs are turned in. As they have been on other feed, it will take a week or 10 days' feeding to get them entirely on a corn diet. In the Corn Belt latitude they may be expected to live entirely in the corn field from about September 10 until the crop is consumed. It is generally found best not to permit the hogs range of the entire field, but to erect temporary fences. These can easily be built of 25-inch wide wire mesh, fastened to anchor posts at the ends and tied to cornstalks instead of line posts. If a supplemental crop such as rape, cowpeas, soy beans, or even pumpkins, has been sowed among the corn, it will provide protein feed which the corn lacks. Pigs easily learn to pull down the cornstalks for the ears and waste less than when fed in the yard.

The following spring the stalks and trash that remain on the surface of the field are cut over with a sharp disk and the ground prepared for a second crop of corn, which is harvested by hand, while the corn for "hogging down" is planted in the second tract. Rye is sown on this field in the

fall, either with a one-horse drill between the rows, or after the corn is harvested. The rye may be used to get a stand of clover and timothy, the timothy being sown with the rye and the clover the next spring.

### Rye Pasture for Hogs in Spring

The rye is used for hog pasture from early spring until the stalks become too hard. It will be found valuable pasture for brood sows with young pigs. After the pigs cease to consume the rye they are taken out and not returned until after the grain becomes ripe, when they are allowed to consume the entire crop and graze on the young clover until time to turn them into the corn in September.

The clover and timothy come on the next year and are used for hog pasture and the best parts kept for hay for other stock. The fifth year the timothy and clover crop is cut for hay and the sod turned under late in the fall to prepare the ground for the next year's "hogging down" crop of corn.

### ADMINISTRATOR'S SALE

Pursuant to an order of J. M. Windham, Judge of Probate, I will sell to the highest bidder for cash at the residence of Ben Geddings near Hodge's Corner, S. C., on Saturday the 6th day of August, 1921 at 11 o'clock a. m. the following personal property: One Ford Touring Car, one lot of household furniture, one set of buggy harness, one bicycle and two share of stock in Pinewood Ice and Product Co.

T. B. MIMS,

Administrator.

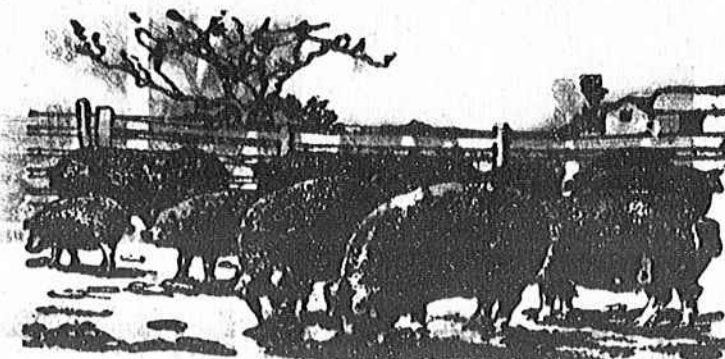
Pinewood, July 20, 1921. pd.

### TRESPASS NOTICE

Pursuant to the provisions of Section 241, Criminal Code of South Carolina, notice is hereby given that the lands of the Brooklyn Cooperage Company leased from the Santee River Cypress Lumber Company in Clarendon County are posted, and all persons entering without authority upon the same will be duly prosecuted.

Brooklyn Cooperage Company, Georgetown, S. C.

4-t-c



## Pure Bred Live Stock

is an asset to any community. We want more of it in ours.

A bank that knows a community's need, and the needs of the farmers is in position to assist with advice on many important agricultural subjects.

This bank desires to assist to the best of its ability in procuring more and better live stock on the farms in this section.

## First National Bank

W. C. DAVIS, President

A. C. BRADHAM, Vice-President

J. T. STUKES, Cashier.

Chovine Sprott

B. E. Chandler

# COAL

GENUINE VA. BLUE GEM

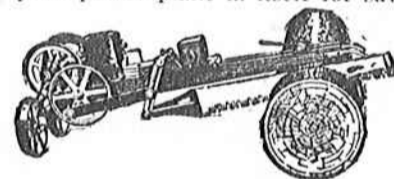
The BEST COAL KNOWN for domestic use. Satisfaction guaranteed. Stock always on hand. Deliveries prompt.

MANNING FUEL CO.

Phone 127

Manning, S. C.

We have a high power, fast cutting outfit forced feed—a complete power plant in itself for sawing logs to any length. Does the work of six to ten men. Lever control of blade while engine is running. Have good assortment of Gasoline Engines. All equipped with Bosch Magneto and offered at factory prices.



Lever control starts and stops Saw.

COLUMBIA SUPPLY COMPANY

823 West Gervais St.,

COLUMBIA, S. C.

# STOP IN

and look over what we have to show you in our line next time you come to town. It may be you are not in the market just now for what we have for sale, but would give us the privilege and pleasure of showing you thru anyway. We will show you only such goods as will give you service. Prices and terms always in line. Stop with us when in town.

D. M. Bradham & Son.

### THE U. S. NOBBY TREAD

Where the going is specially heavy with mud or sand, in hilly country where maximum traction on the road is a factor, no other tire tread yet devised is quite so effective, or so wholly approved by motoring opinion, as the U. S. Nobby Tread.

In very simplicity—three rows of diagonal knobs, gripping the road—lies the secret of all the years of U. S. Rubber experience with every type of road the world over.



# If every one listened to experience, how much they'd save

STOP and talk to the next man you see with U. S. Tires on his car. Ask him why.

Most likely you'll hear an interesting story about his tire experiments—before the answer was found. Money wasted. Promises unkept. Trouble on the road—humorous to every one except the man who went through it.

Finally U. S. Tires. And U. S. Tires ever since.

Perhaps it's the experience of U. S. Tire buyers that makes them more emphatic in their preference than ever this year.

When these men have tried most

everything by the way of "staggering bargains", "hurrah discounts", "discontinued lines at less" and so forth they know what not to get.

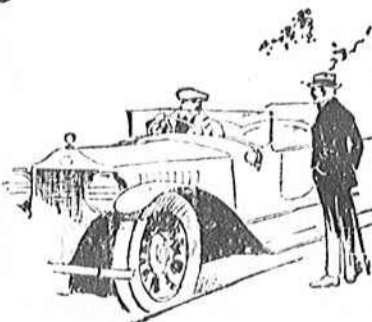
They want a fresh, live tire. With a good reputation. That's everything it says it is. With the people behind it who back it up.

There are 92 U. S. Factory Branches.

Your local U. S. Dealer is drawing upon them continually to keep his stocks sized up, complete—to give you service.

Whenever he gets one or a hundred tires from a U. S. Factory Branch, they are newly made this season's tires.

Sold to you at a net price. Full values. Square-dealing. A reputable maker. A reputable dealer. The whole transaction as befits the leadership of the oldest and largest rubber organization in the world.



"Stop and talk to the next man you see with U. S. Tires on his car."

United States Tires are Good Tires

U. S. USCO TREAD

U. S. CHAIN TREAD

U. S. NOBBY TREAD

U. S. ROYAL CORD

U. S. RED & GREY TUBES

# United States Tires

## United States Rubber Company

L. M. Jones, Alcolu, S. C.

Geddings & Weeks, Pinewood, S. C.

W. J. Kawlinson, Jr., Jordan, S. C.

Rawlinson Motor Co., Paxville, S. C.

D. E. & J. F. Turbeville, Turbeville, S. C.