

Our Farmer Friends:

As the Fall Season is drawing to a close and new plans and arrangements are being made for the coming year, we invite you to place your account in our hands.

None of us can intelligently prophesy as to what the coming year really holds in store; but a friendly connection with a strong bank is the best security against the uncertainties of the future.

FIRST NATIONAL BANK.

W. C. DAVIS, President.
J. A. WEINBERG, Vice-President.
J. T. STUKES, Cashier.

Relief must shelter under its merciful wings. There is mile after mile of human misery to be relieved.

Fatherless and motherless these are the children of Armenians, Greeks and Jews made homeless and dependent by the atrocities of the Turks. They will have no place this year at a family table of their own on the Great Day we celebrate.

As you eagerly plan the Festival for the Children dear to your own heart, think for a moment what it would mean if some terrible fate deprived them of your love and care, left desolate, suffering with disease and bitter cold. Yet these children across the sea were once the adored and beloved babies of other fathers and mothers whose protecting love they never will know again.

A diet of bread for breakfast, bread and soup for dinner and bread for supper. Yet this slender ration means life to them.

Five dollars a month will feed one child. Ten dollars a month will feed and clothe one. Fifteen dollars a month will feed, clothe and educate one of these Children of Sorrow.

At this season of giving won't you let the claim of one of these Children of Sorrow find a place in your heart?

His hungry eyes look at your well-fed children, and his longing hand reaches out to your Christmas tree. Will you bring a smile to this Child of Sorrow by sharing with him your Christmas?

Please send contributions to Near East Relief, 211 Liberty National Bank Building, Columbia, S. C.

GUESTS IN SUMMER MONTHS BECOME CUSTOMERS IN WINTER

Many producers living near summer resorts supply produce in the summer months to the persons at the resorts, and during the other months of the year ship produce to these persons while the yare in the city. This, say

marketing specialists of the United States Department of Agriculture, is one of the best methods of obtaining customers for direct marketing, as the producer and consumer have some acquaintance. In most instances the customers have been at the producers' fair and know under what conditions the articles are produced.

One man who lives near a summer resort in Indiana is about 12 miles from the nearest town of any size. He does not desire to drive to this town to dispose of his farm produce and is not satisfied with the prices that the hucksters pay. Consequently he built up a business of supplying products to resorters in the summer and of shipping produce by parcel post and express to these persons at their city homes in the winter.

The principal products shipped are butter, eggs, and dressed poultry. This producer uses good shipping containers and packs produce attractively. As he is acquainted with his customers, he renders statements of accounts only once a month. In this way the matter of making payments is simplified for the customers.

This producer has had no trouble in establishing his business nor in retaining customers. He states that his only trouble has been in getting enough high-grade produce to supply all of his customers.

CAFÉ SCENE OF FATAL SHOOTING

Greenville, December 13.—As a result of a disturbance arising in a Main street café at 7 o'clock tonight,

Grady Prince, aged twenty-seven and unmarried, is dead and Charles Spencer, proprietor of the café and a well known Greenville resident for twenty years, is lodged in the county jail, charged with the shooting.

Spencer frankly admits, it is said by the police, that he fired the lone bullet which pierced Prince's heart, saying that the action was taken as a last resort, when Prince and another young man, Shirley Styles, attacked him. Styles attacked him first, Spencer told the police, and Prince later joined in. Spencer, who is about forty-three years of age, used a 32-caliber revolver.

Prince is a veteran of the Eighty-first division, having served overseas with the Greenville 323d ambulance company as a corporal. He lived on the Buncombe road just beyond the city limits. A large number of persons were in the restaurant when the shooting occurred and a large crowd quickly gathered in and about the place.

PENNY OF BIRDS

"Birds were never so plentiful nor the coveys so large since I have been visiting the state," writes Gordon Abbott, Boston capitalist, who is now at Lanes on a hunting trip to Chief

Game Warden Gilbes. Mr. Abbott has been visiting South Carolina for a number of years and he is very well pleased with the hunting here.

Contrary to the general opinion, Mr. Abbott says, the birds are not thinned by forest fires, as he finds them just as plentiful after the blazes as before.

NEEDING MORE MONEY

Washington, Dec. 13.—Requests for an additional appropriation of \$17,958,789 to cover expenses during the present fiscal year was made of congress today by the bureau of internal revenue. It was explained that \$9,000,000 was needed for the collection of war revenue, \$6,000,000 for refunding of taxes illegally collected, \$1,600,000 for the enforcement of the prohibition and narcotic laws and the remainder to meet other deficiencies.

NOTICE OF DISCHARGE

I will apply to the Judge of Probate for Clarendon County on the 6th day of January, 1921, for letters of discharge as Guardian for Abbie Theodocia Ragin, Able Francis Ragin, Alexander Preston Ragin, Elenora Annie Ragin and John Marshall Ragin, formerly minors.
A. P. Ragin, Guardian.
Pinewood, S. C., Dec., 6, 1920—pd.

PARCEL POST BRINGS CITY MARKET TO PRODUCER'S DOOR

Small Flock Owners Can Sell Eggs Advantageously by Developing Special Trade in City—Uncle Sam Will Deliver Eggs at Customer's Door.

If the rural delivery is at your door, the city market is there for your small produce, say specialists of the United States Department of Agriculture. At present many producers are neglecting entirely this marketing medium or are not utilizing it to the extent they might. Wider use of the parcel post for marketing eggs is particularly advisable for the small producer who can easily and advantageously build up a direct trade with the city. When more produce is marketed from the farm to the city there will be less complaint on the part of the producer that the prices he must sell for are too low, and less on the part of the consumer that the prices he pays are too high.

Sell Only First-Class Eggs

It is preferable to produce infertile eggs for market, as fertile eggs deteriorate rapidly in warm weather and are the cause of much loss. The eggs should be gathered at least once a day and stored in a well-ventilated place, where they can be kept as cool as possible. As washing removes the mucilaginous coating of eggs and opens the pores of the shell, it should not be practiced in the case of eggs intended for high-class trade. Soiled eggs should be used at home or disposed of otherwise than to a parcelpost customer.

If there is any doubt concerning the freshness or quality of the eggs, they should be candled, so that all eggs showing any defect may be held at home, say poultry specialists of the United States Department of Agriculture. For parcel-post shipment it is essential that uniform containers and a uniform pack should be used, as otherwise the packages will not wear well, nor will they look attractive and appeal to the fancy trade. Furthermore, the containers should be stout and durable, so as to make it worth while to return them as "empties" for subsequent use.

According to post-office regulations, eggs will be accepted for local delivery when they are so packed in a basket or other container as to prevent damage to other mail matter. Eggs to be sent beyond the local office are accepted for mailing, regardless of distance, when each egg is wrapped separately and surrounded

with excelsior, cotton, or other suitable material and packed in a strong container made of double-faced, corrugated pasteboard, metal, wood, or other suitable material and wrapped so that nothing can escape from the package. All such parcels must be labeled "Eggs." Eggs in parcels weighing more than 20 pounds are accepted for mailing to offices in the first and second zones when packed in crates, boxes, buckets, or other containers having tight bottoms to prevent the escape of anything from the package and so constructed as properly to protect the contents. Such packages must be marked "Eggs—This Side Up" and must be transported outside of mail sacks or boxes.

It is advisable that square block tissue paper, which comes in packages of 500 sheets each, soft wrapping paper, or newspaper should be used around each egg, as otherwise there is danger of breakage in handling. Average hens' eggs will weigh about 2 ounces apiece, or between 2 and 3 pounds a dozen, when properly packed for mailing in a carton. Most parcels containing a dozen eggs will exceed 2 pounds, but will not reach 3; therefore the postage on them will be 7 cents within the first and second zones, or 150-mile limit. A parcel containing 2 dozen eggs will add, perhaps, 2 cents to the postage, though sometimes only 1 cent, depending on the character of the container and wrapper.

Ship Large-Size Packages
The larger the parcel, within the size and weight limits, the cheaper is the postage, as the first pound of every package costs 5 cents within the first and second zones, while each additional pound, up to 50, costs but 1 cent.

THE CHILDREN OF SORROW

Here's a personal letter to every man and woman in South Carolina. It is sent out from state headquarters of the Near East Relief to every newspaper in the state. Each reader is requested to consider it addressed to him or her individually and to "take it to heart" in the true Christmas way.

My dear Friend:
The Children of Sorrow stand before you! Won't you set a place for them at your table on Christmas Day?

They are ragged, homeless and hungry, but they are not hopeless. In their simple faith they turn trustfully to you.

The Children of Sorrow! There are unknown thousands of them; 110,639 of whom are under American care. It is an appalling number of pitiful, orphaned wards the Near East

WATCH THE BIG 4

Stomach-Kidneys-Heart-Liver
Keep the vital organs healthy by regularly taking the world's standard remedy for kidney, liver, bladder and uric acid troubles—

GOLD MEDAL HAARLEM OIL CAPSULES

The National Remedy of Holland for centuries and endorsed by Queen Wilhelmina. At all druggists, three sizes. Look for the name Gold Medal on every box and accept no imitation.

All Hats Going at 10 per cent Below Cost

Our entire stock of beautiful hats for women and children are included in this offer. Each hat reveals something new and fascinating—and the ensemble is like a fashion presentation of the best in New Millinery.

See us for Ribbons and Novelties for Xmas.

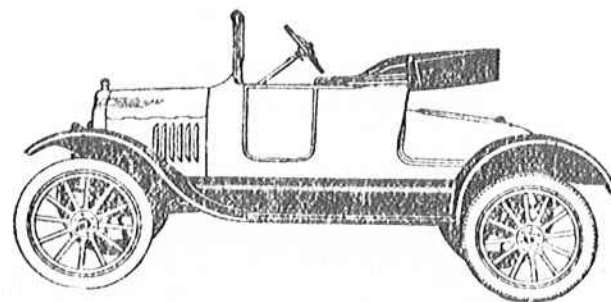
BALL & EBERHARD--Millinery.

Ford

THE UNIVERSAL CAR

Here is the Ford Runabout, a perfect whirlwind of utility. Fits into the daily life of everybody, anywhere, everywhere, and all the time. For town and country, it is all that its name implies—a Runabout. Low in cost of operation; low in cost of maintenance, with all the sturdy strength, dependability and reliability for which Ford cars are noted. We'd be pleased to have your order for one or more. We have about everything in motor car accessories, and always have a full line of genuine Ford Parts. We'd like to have you for our customer.

Remember if you want your Ford to give continuous service you must keep it in good condition. We will do it for you.



CLARENDON MOTOR CO.,
Manning, S. C.

F. R. DINGLE MOTOR CO.,
Summerton, S. C.

W. C. PLOWDEN, New Zion, S. C.

Cosy Bungalows from \$364 up

Double Fabricated Bungalows give every man a chance to own his own cosy, substantial, enduring, weather-proof, enjoyable home. Four wall-layer construction with dead air space between effects insulation against Summer heat and Winter cold.

Shipped in easy-to-handle sections—quickly erected by any handy man, by plans we furnish. What you save in rent will soon pay for a Double Fabricated Bungalow.

DIXIE HOUSE COMPANY
CHARLESTON, S. C.

Write for illustrated catalog of Dixie Houses priced from \$364 to \$3900. Tell your plans, specific actions and prices.



Quick Shipments