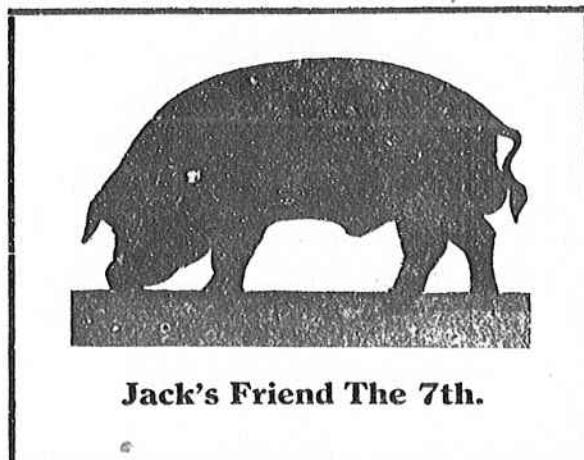
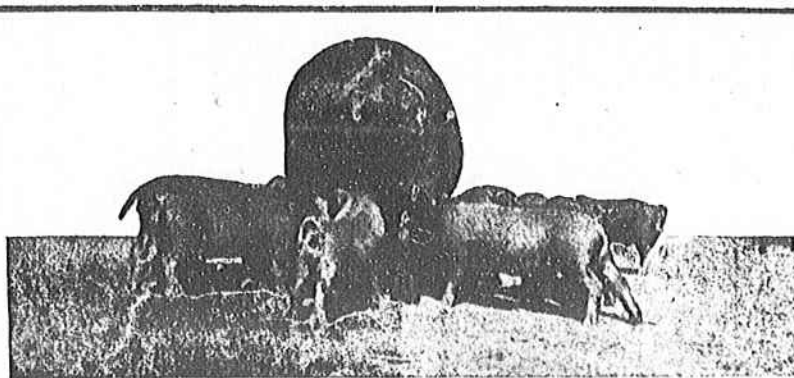


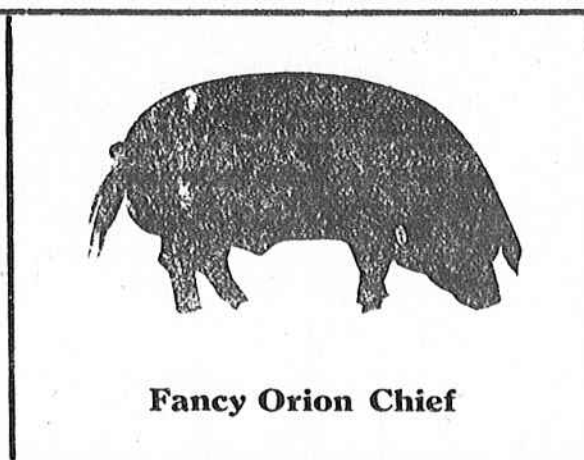
Bradham Duroc Farm



Jack's Friend The 7th.



One of Our Producing Sows



Fancy Orion Chief

We have a few Sows that will farrow in October for Sale.  
Also have a few nice spring Boars for Sale.

Visit our Farm and see Champion and World Champion Durocs.

# BRADHAM DUROC FARM,

Manning, S. C.

## HOW TO ESTABLISH A CARPET GRASS PASTURE

Clemson College, September 27.—Carpet grass is rapidly becoming recognized as our most important pasture grass for the lighter soils of the Coastal Plain section of this state. It is now recognized that it should form the basis of any permanent pasture for that section of the state. Carpet grass may be planted any time from early spring till past mid-summer. It may be seeded on cleared land which has been in cultivation, or on cut-over land without clearing. Directions for starting this grass are given below by Prof. C. P. Blackwell, Agronomist.

A. In order to secure a good stand immediately on cleared land, first work the land into a good firm clean bed. Deep plowing is not necessary. Sow the seed at the rate of ten pounds per acre and harrow in lightly, when the ground is moist. As soon as the grass is high enough, it should be grazed closely, since close razing and much trampling will help Carpet Grass and will kill weeds. About five pounds of Lespedeza should always be seeded with Carpet Grass, unless it is already grown on the land.

Carpet Grass may be started also by just scattering the hay over the land, but this method is slow. When once started it will soon crowd out other grass and take possession of the pasture if closely grazed. It never becomes a weed, however, and

can be easily destroyed.

B. Carpet Grass may be started on cut-over land, and will form a good pasture in a short time, if the native wire-grass and broom-sedge are burned off and the pasture is grazed closely. Mr. C. V. Piper, who has made a close study of Carpet Grass, gives the following plan for converting wire-grass and broom-sedge lands to Carpet Grass pasture.

(1) All brush should be cut and all trees not valuable for timber deadened by girdling.

(2) Burn over the area as cleanly as possible when conditions are favorable. Disking or plowing is not necessary and apparently not desirable. In lieu of burning, close mowing may be used, but this is more expensive.

(3) Limit the area, preferably by fencing, to the acreage that can be kept heavily grazed.

(4) Seed to carpet grass at the rate of 5 to 10 pounds per acre any time after spring weather has begun and moisture conditions are favorable. If not already present, Lespedeza should be seeded at the rate of 5 pounds per acre.

(5) Drain by open ditches all areas where water is likely to stand for a considerable time.

(6) Heavy grazing will destroy all bunch grasses in one or at most two seasons, and solid Carpet Grass sod will cover the land.

(7) On "flatwoods" and other soils suited to carpet grass, gallberry and bayberry often occupy much land. These shrubs may be eradicated by cutting with a brush hook or other device two or three times. Gallberry and bayberry are both bitter, and animals refuse to eat them."

### 200 BALES COTTON BURNED

Timmonsville, Sept. 26.—A disastrous fire occurred here at 4:30 o'clock this morning, destroying 200 bales of cotton on the Atlantic Coast line platform and a nearby box car. The large brick freight depot, value at \$25,000, is also practically demolished. The cotton was fully covered by insurance. It is not known just how the fire originated.

### MEXICAN REDS DECLARE WAR ON GOVERNMENT

Mexico City, Sept. 27.—Violent harangues in which social revolution was

urged upon a great throng were given from the central balcony of the central palace here today, when agitators manifested. There were cheers for Russia and for Italian metal workers and demands were made that supplies and stores in warehouses be turned over to the people through the medium of a food dictatorship. The red and black communist flag waved from the balcony during this discourse, but there were no disorders, and the authorities did not interfere.

Similar meetings were held at the headquarters of the Industrial Workers of the World and the Communist Federation of the Mexican Proletariat. The latter organization is made up of the more violent agitators.

The manifestation was planned by

## Professional Cards

JNO. G. DINKINS

Attorney-at-Law

MANNING, S. C.

DURANT & ELLERBE

Attorneys at Law

MANNING, S. C.

R. O. Purdy. S. Oliver O'Bryan

PURDY & O'BRYAN

Attorneys and Counselors at Law.

MANNING, S. C.

FRED LESESNE

Attorney at Law

MANNING, S. C.

Loans Negotiated on Real Estate

MONEY TO LOAN

On Real Estate—Small and Large Loans. Long Terms.

J. W. WIDEMAN

MANNING, S. C.

H. C. CURTIS,

Attorney-at-Law

MANNING, S. C.

WEINBERG & STUKES

J. A. Weinberg Taylor H. Stukes

Attorneys-at-Law

MANNING, S. C.

the Workers' Confederation of the Mexican Region, which is made up, for the most part, of the more moderate elements.

In addition to urging social revolution and a food dictatorship the radicals directed attacks at the national

legislature and the supreme court. Some of the orators declared two bombs were ready for each Mexico City newspaper, all of which were denounced as "organs of capitalism and enemies of the workers." Among the suggestions launched

from the palace balcony were the dynamiting of the archbishop's palace, the erecting of a guillotine for all journalists in the central plaza, the construction of barricades in the streets, cheers for the communist revolution in Yucatan, and the sacking of food shops.

**Your Home is what You Make it—**

**THE chief consideration in the creation of a cozy, artistic home is the way you paint and decorate it—**

**Let your home reflect your own taste by the choice of correct and harmonious color effects. But whatever your needs, be sure to specify Paints that have proven their worth, because you paint to protect as well as to beautify.**

**Ask For These Free Paint Books**

"Homes and How to Paint Them"—Contains many beautiful illustrations of attractively painted homes, shows floor plans, gives specifications and tells how to select the right colors.

"The Modern Method of Decorating"—This beautifully illustrated book gives the latest and best ideas on the decoration of interior walls and ceilings. It shows a number of rooms designed by leading artists, giving exact specifications for obtaining harmonious color effects with Pee Gee FLATKOAAT.

"The Modern Method of Finishing Wood"—If you intend to build or refinish your home, this illustrated booklet will be of great help to you. It contains 20 color plates of finished wood panels, and gives practical advice how to take care of your floors and woodwork.

**Pee Gee PAINTS SINCE 1867**

**ALDERMAN STORES,**  
Manning, S. C.

## VICTIMS RESCUED

Kidney, liver, bladder and uric acid troubles are most dangerous because of their insidious attacks. Heed the first warning they give that they need attention by taking



The world's standard remedy for these disorders, will often ward off these diseases and strengthen the body against further attacks. Three sizes, all druggists. Look for the name Gold Medal on every box and accept no imitation.