

Skin Eruptions Cause

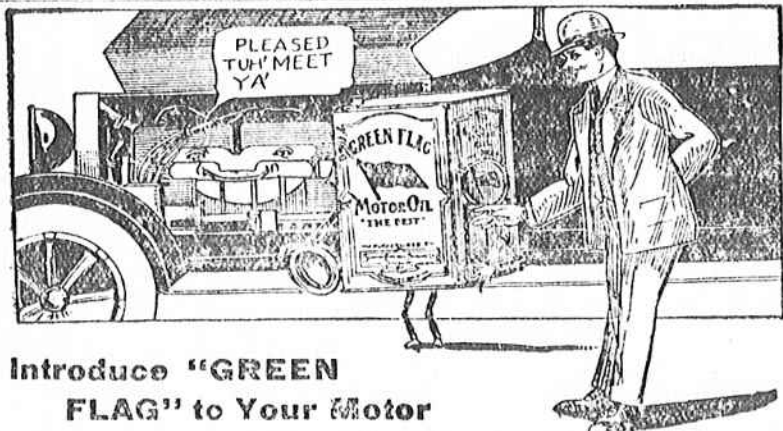
Constant Torture

Disease Germs Must Be Eliminated From the Blood.

Eczema, tetter, boils, pimples, ulcers, irritations and scalp eruptions, as well as all other forms of skin diseases, come from a disordered condition of the blood. They must be cured through the blood, and this explains why local treatment fails so absolutely. The radical and rational treat-

ment is to take a thorough course of S. S. S., which will rout out the disease germs from your blood, your complexion will begin to clear up and you will soon be rid of the disease as thousands of others have.

Get a bottle of S. S. S. today, write to our head physician, who will gladly give you full medical advice without charge. Address Medical Director, Swift Laboratory, Atlanta, Ga.



Introduce "GREEN FLAG" to Your Motor

Your power plant will be powerfully well pleased to have you introduce "GREEN FLAG" Motor Oil to its oiling system and make them regular "pals" by continued acquaintanceship. DON'T DELAY THIS INTRODUCTION!

Go to the "Green Flag" dealer today and have your crank case drained and re-filled with the proper grade of "GREEN FLAG" for YOUR car, and results will positively amaze you. You'll discover NEW POWER, SMOOTHER PERFORMANCE, QUICKER RESPONSE, and immensely improved operation in EVERY PARTICULAR. Not a temporary improvement, but one that'll stick as long as you use "Green Flag."

Costs no more to begin with
Costs less in the end

Supplied by the following well-known dealers

Ask for Green Flag
Gear Compound and
Cup Grease

DEMOCRATIC PRIMARY ELECTION, MANAGERS AND POLLING PLACES

NOTICE IS HEREBY GIVEN, That the First Democratic Primary Election will be held on Tuesday August 31, 1920.

The Australian ballot will be used at all of the precincts of the county except the following: Oakdale club, Foreston club, Doctor Swamp club, Sandy Grove club, Jordan club, Midway club, Pork club, Davis Cross Roads club, Silver club and Enterprise club.

The managers of election at which the Australian ballot is used shall provide suitable booths as provided by the rules of the party.

The managers before opening the polls shall take and sign the oath set forth in Rule 31, blanks for that purpose will be furnished with the ballots.

The managers shall open the polls at 8 o'clock A. M. and shall close them at 4 o'clock P. M. They shall then proceed publicly to count the vote. After tabulating the result, the managers shall certify the same and forward the ballot box containing the

ballots, poll list, and all other papers, except the enrollment books, relating to the election, by one of their number to the County Chairman within thirty-six (36) hours after the close of the polls.

The managers at each box shall require each voter to take the following oath and pledge: "I do solemnly swear that I am a resident of this club district and am duly qualified to vote at this election according to the rules of the Democratic Party, and that I have not voted before at this election, and pledge myself to support the nominees of the Party, State and National and that I did not, in the General Election of 1916 vote against the regular nominee of the Democratic Party as declared by the State or County Executive Committee after having become a member of a Democratic Club."

The following are the polling places for each club, together with the names of the managers, to wit:—

- Panola Club**
Polling place Brown's Store. Managers of election—C. W. Brown, W. R. Davis and R. Hugh Belsler.
- Oakdale Club**
Polling place School House. Managers of election—E. P. Epps, J. J. Epps

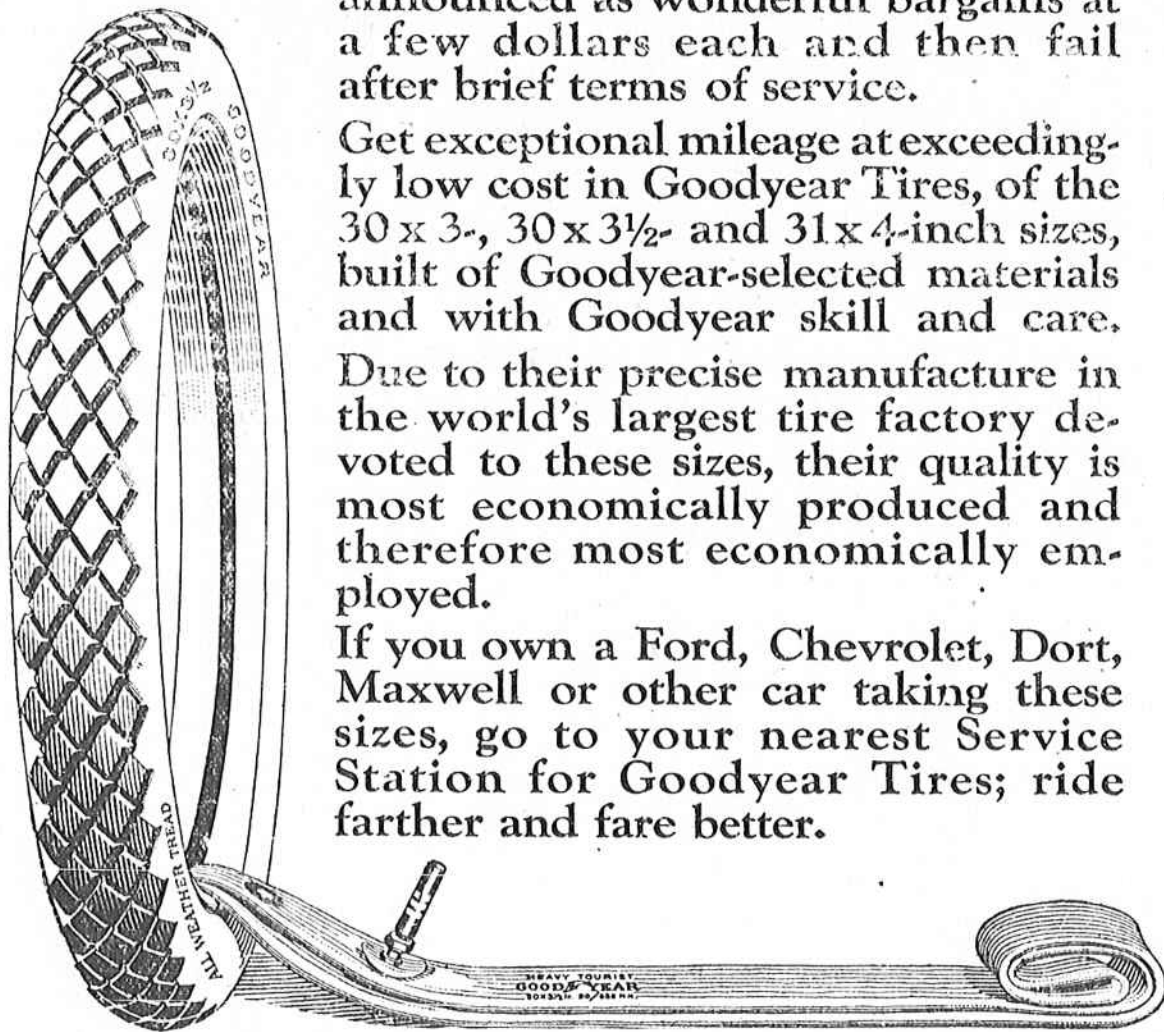
Goodyear Tires for Small Cars Are Popular Because Economical

There is nothing but disappointment in buying cheaply made tires that are announced as wonderful bargains at a few dollars each and then fail after brief terms of service.

Get exceptional mileage at exceedingly low cost in Goodyear Tires, of the 30 x 3, 30 x 3 1/2 and 31 x 4-inch sizes, built of Goodyear-selected materials and with Goodyear skill and care.

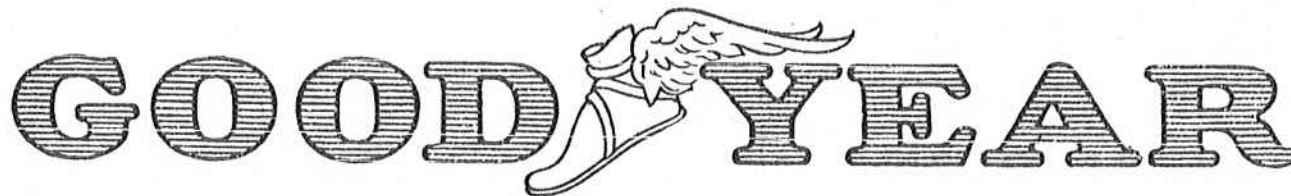
Due to their precise manufacture in the world's largest tire factory devoted to these sizes, their quality is most economically produced and therefore most economically employed.

If you own a Ford, Chevrolet, Dort, Maxwell or other car taking these sizes, go to your nearest Service Station for Goodyear Tires; ride farther and fare better.



30 x 3 1/2 Goodyear Double-Cure Fabric, All-Weather Tread... \$23.50
30 x 3 1/2 Goodyear Single-Cure Fabric, Anti-Skid Tread... \$21.50

Goodyear Heavy Tourist Tubes cost no more than the price you are asked to pay for tubes of less merit—why risk costly casings when such sure protection is available? \$4.50
30 x 3 1/2 size in waterproof bag



Delco-Light is Carrying the Comforts and Conveniences of the City Into Farm Homes

It is furnishing bright clean electric light throughout the house and barn—doing away with the smoky, dangerous kerosene lamp and lantern.

It is providing power to pump water, thus making possible a modern bath and the convenience of running water throughout the house and barn.

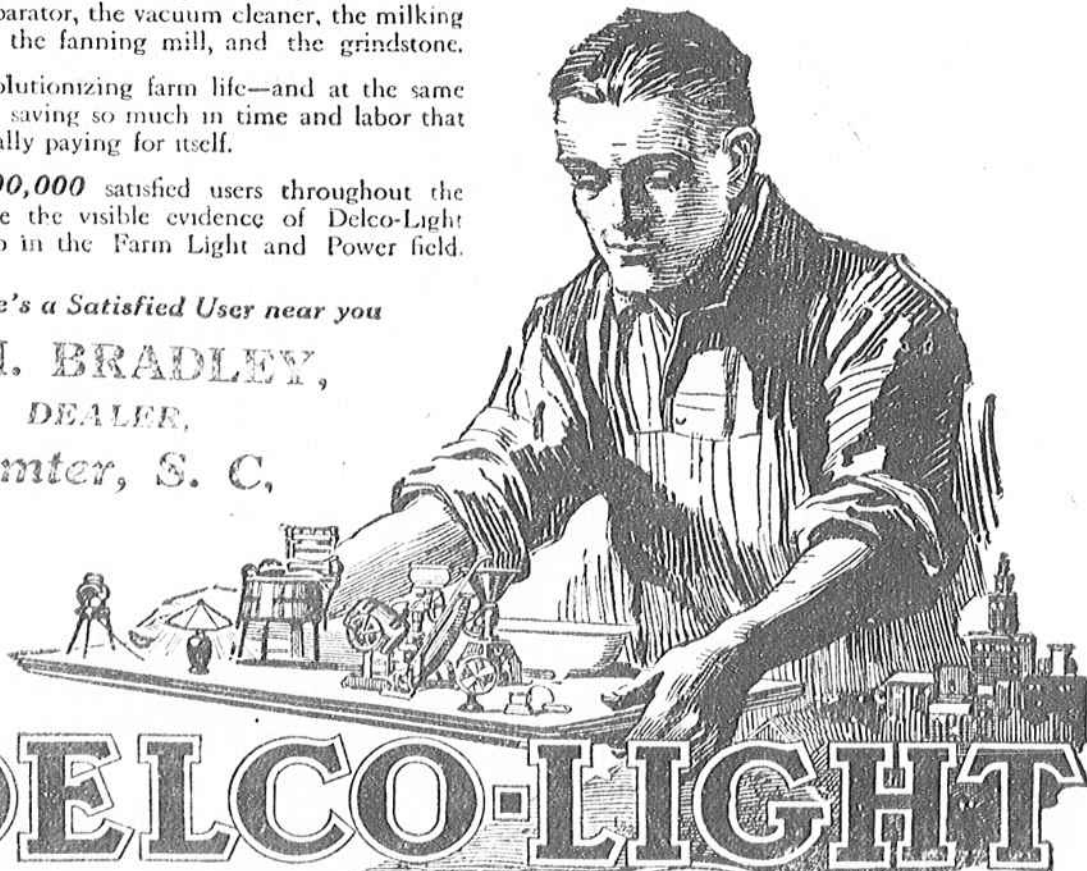
It is operating the washing machine, the churn and cream separator, the vacuum cleaner, the milking machine, the fanning mill, and the grindstone.

It is revolutionizing farm life—and at the same time it is saving so much in time and labor that it is actually paying for itself.

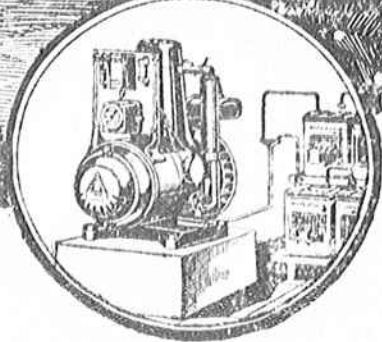
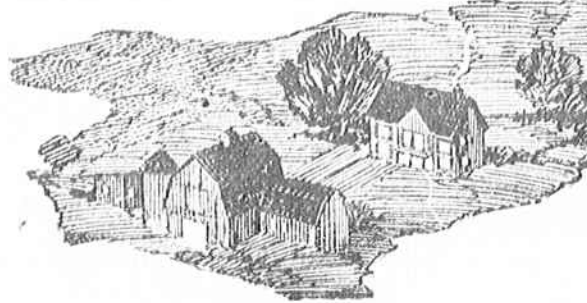
Over 100,000 satisfied users throughout the world are the visible evidence of Delco-Light leadership in the Farm Light and Power field.

There's a Satisfied User near you

T. M. BRADLEY,
DEALER,
Sumter, S. C.



DELCO-LIGHT



Air Cooled—No Belts—Only One Place to Oil—Long-lived Battery.

Valve-in-Head Motor
Runs on Kerosene

and Marion Evans.
Davis Station Club.
Polling place Drug Store. Managers of election—E. G. Stukes, D. G. Shorter and J. W. Childers.

Paxville Club
Polling place Magistrate's Office. Managers of election—W. R. Keels, Thos. W. Gunter and S. L. Touchberry.

New Zion Club
Polling place New Zion Furniture Co. Managers of election—J. P. Budding, W. D. Flemming and C. W. Lavender.

Seloc Club
Polling place Store of J. F. Cole & Sons. Managers of election—C. H. Castine, H. W. Cole and Miller H. Mellette.

Foreston Club.
Polling place Land's Store. Managers of election—C. S. Land, Sr., S. A. Barnes and J. E. Husbands.

Foreston Reform Club
Polling place Graham's Store. Managers of election—J. E. Graham, S. E. Ridgeway and A. J. Hodge.

Jordan Club
Polling place Drug Store. Managers of election—J. H. June, W. J. Rawlinson and J. H. Childers.

Midway Club
Polling place Barrow's Mill. Managers of election—H. M. McIntosh, J. W. Morris and R. M. Evans.

Fork Club
Polling place Harvin Depot. Managers of election—T. J. Lowder, F. S. Broadway and Paul S. Harvin.

Manning Club
Polling place Grand Jury room. Managers of election—S. J. Clark, Fred Lesene and Thomas Nimmer.

Manning Farmers' Platform Club
Polling place Magistrate's Office. Managers of election—J. Furman Bradham, J. D. Allbrook and Jno. G. Dinkins.

Clarendon Club
Polling place Supervisor's Office. Managers of election—John C. Bagnall, H. I. Elletts and S. E. Ingram.

Turbeville Club.
Polling place Turbeville & Dennis Store. Managers of election—T. H. Collier, J. C. Dennis and J. A. Green.

Doctor Swamp Club
Polling place Duff's Store. Managers of election—C. W. Thames, J. S. Pevon and Henry Dalzell.

Sandy Grove Club
Polling place Alderman's Artesian Well. Managers of election—J. H. Hrm, G. T. Worsham and R. E. Smith.

Hardey Club
Polling place Booth at B. B. Odom. Managers of election—W. E. Daniels, E. B. Tindal and Ruthven Plowden.

Alcola Club
Polling place Depot. Managers of election—J. J. Barfield, J. Baxter Lee

and J. R. Hodge.
Bloomville Club
Polling place Thomas' Store. Managers of election—C. J. Haley, W. C. White and W. S. Anderson.

Summertown Club
Polling place Judge Richbourg's office. Managers of election—H. P. Troy, J. F. Richbourg and C. R. Touchberry.

Davis Cross Roads Club
Polling place Harvin's Store. Managers of election—Jeff M. Davis, E. O. Rowe and A. W. Billups.

Silver Club
Polling place Drakeford's Store. Enterprise Club

Polling place Store of Robert H. Reaves. Managers of election—John W. Perry, P. L. B. Hodge and J. S.

Manning, S. C., Aug. 17, 1920.—2t.
Managers of election—M. B. K. Drakeford, R. E. Davis and E. B. Felder.

Sardinia Club
Polling place Garland's Store. Managers of election—H. H. Garland, W. J. Milsap and Marion DuBose.

Pinewood Club
Polling place Magistrate's Office. Managers of election—P. B. Mouzon, R. A. Lawrence and R. A. Ridgill. DuRant.

The boxes, tickets, etc. will be ready for delivery on the 24th. One of the managers will call for same.

S. Oliver O'Bryan,
County Chairman.



CYPRESS "The Wood Eternal"

has no equal for porch construction. It seems to be prettily demonstrated that for all porch construction, porch floors, porch columns, steps and rails, the rot-resistant quality of "The Wood Eternal" gives it unequalled investment value for this class of work. CYPRESS is famous for "staying put."

Let our "ALL-ROUND HELPS DEPARTMENT" help YOU. Our entire resources are at your service with Reliable Counsel. We invite correspondence with a serious purpose in it.

Southern Cypress Manufacturers' Ass'n

177 Herd Bldg. Jacksonville Fla.

INSIST THAT YOUR LOCAL LUMBERMAN FURNISH YOU TRUE "TIDEWATER" CYPRESS—IDENTIFIED BY CYPRESS ASSOCIATION'S REGISTERED TRADE-MARK. IF IN DOUBT, WRITE US.

