

# SOME OF THE NEW SPRING FASHIONS NOW ON DISPLAY.

We Would Like to Have You Call in for a Look.

## NEW SPRING SUITS AND COATS

In all the New Styles, every Fashionable Material and every popular Color, and what's more you will find the price extremely moderate. We believe after seeing them you will agree with us that they are a little above the average Suits and Coats. We would be pleased to have you come in and try them on. We probably have your size and one that you will like.

## NEW SPRING SILKS

Tis here you will see the New Fabrics that are now in favor this season. Early though it is we are prepared to show you a large varied collection of the season's newest silks.

## ALL THE NEW SPRING WHITE GOODS

are here for your inspection and you will find it a very pleasing display from both Variety and Moderate Prices. We played lucky and bought early. We are prepared to save you many dollars on your Spring Purchases. Always ready to serve you.

# Iseman-Weinberg Company.

## PAXVILLE.

The Paxville Woman's Christian Temperance Union will hold a commemorative service of Frances E. Willard in the Paxville Methodist church on next Sunday evening, Feb. 24th at 7:30 o'clock. A very pleasing program is being arranged for this occasion and everybody is very cordially invited to attend. The commemorative service should not be one of sadness but of sacred joy. It should not only commemorate the beautiful life and achievements of the founder of the World's W. C. T. U., but should win thousands of new workers and thousands of dollars for the Memorial Fund.

Miss Alice Broadway spent the week-end in Manning, the guest of her brother, Dr. R. E. Broadway.

Mr. Dewey Reynolds has returned to Bamberg where he is attending school after a visit to his relatives near town.

Mrs. Adlee Bradham has accepted a position as clerk in the store of Mr. J. Abrams.

**Drives Out Malaria, Builds Up System**  
The Old Standard general strengthening tonic, GROVE'S TASTELESS CHILL TONIC, drives out Malaria, enriches the blood, and builds up the system. A true tonic. For adults and children. 60c

## HATCH EARLY

Take Advantage of the best Growing Season for Young Chicks—Get Largest Returns from Your Poultry

In its campaign to increase poultry production the United States Department of Agriculture puts special emphasis upon the importance of early hatching, because that is the key to the whole situation. While chickens can be hatched at any time of the year, it is the chickens hatched early in the spring that give best results. Unless a special effort is made to hatch early on the farms throughout the country the hatching season coincides too closely with the planting season, and hatching operations are reduced on that account.

**Early Hatching Gives Best Results**  
Early-hatched chickens give the best results because they are, as a rule, the strongest and most vigorous. They are produced from eggs laid while the hens are in their best breeding condition. After a long period of laying, hens lose something of their vitality and their capacity to transmit vigor to their offspring, and so late hatched chickens are, as a whole decidedly inferior to early-hatched in inherited vigor and constitution.

Because they are more thrifty and vigorous, early hatched chickens make quicker, better and cheaper growth

than late chickens. Thrifty chickens get more from a given quantity of feed than others. Weak and under-sized chickens often consume as much feed as much larger and better-developed birds and still make no perceptible growth.

**Early Chicks Withstand Summer Heat**  
Early chickens develop before summer to the stage where they can withstand extreme heat and the attacks of parasites, which are most vigorous and numerous and troublesome in hot weather. Late chickens are likely to be caught by severe heat just at the stage of their growth when heat is most debilitating to them. In their weakened condition they then become an easy prey to lice and mites, their growth is interrupted, and when the cold weather comes in the fall they are peculiarly susceptible to it. Vigorous early chicks find the coolness stimulating and are not injured by dampness.

**Reduces Hatching Risks**  
Early hatching reduces the risks due to the vicissitudes of hatching. When eggs do not hatch well early in the season there is time to find the reason for poor hatching and correct it before the season is too far advanced to get reasonably early chicks in the numbers desired. In that case poultry production may not be reduced at all, and egg production is retarded only a few weeks. When late hatching is not satisfactory the

crop of poultry is cut short and egg production fails.  
Early-hatched cockerels are ready for the market when prices are highest. Early hatched pullets lay when prices of eggs are highest.

## GERMAN PRESS ON PEACE

Statesmen Urged to Reach Understanding with America

Washington, Feb. 18.—President Wilson's address to Congress last week in interpreted by the Muenchner Neuste Nachrichten and the Muenchner Post, two of the largest newspapers in South Germany, as showing a desire to continue public peace discussions. Editorials from issues of these papers of February 13, received here by cable and made public tonight by the committee on public information, urge the statesmen of the Central Powers to endeavor to come to an understanding with the United States.

The Nuese Nachrichten says: "The President's speech shows a clear desire to continue the public discussion between Washington and the Central Powers. \* \* \* It is important to observe how greatly Wilson differs in tone and substance from the declarations of other Entente statesmen. Today it is easily understood why America is not politically represented at Versailles. It is because Wilson's present policy is not the policy of Clemenceau and Lloyd George. \* \* \* "It should not be difficult for Hertling and Czernin, by defining more closely their former declarations, to come to an agreement in principle with Wilson. But the latter should also see the justice of applying this beautiful principle to the Ententes. If agreement with America can succeed before war machine assumes irresistible momentum, the whole Entente will be unhinged."

## THIRD RAID ON LONDON

London, Feb. 18.—Hostile airplanes are attempting a raid against London again tonight, making the third raid in as many nights. No damage or casualties are yet reported.

An official statement issued at midnight says:

"Hostile aircraft crossed the coast shortly after 9 o'clock tonight and proceeded toward London. None of the raiders penetrated the defenses, and so far there has been no damage and no casualties."

The casualties in Sunday night's air raid were sixteen killed, and thirty-seven injured, it was officially announced this afternoon.

The text of the official statement says:

"The casualties caused by Sunday night's air raid were: Killed, men, thirteen; women, three; total, sixteen. "Injured: Men, twenty-seven; women, ten; total thirty-seven."

One of the bombs dropped on London Sunday night hit a hotel, killing six or eight persons who were in a street nearby watching the progress of the raid. No one in the hotel received worse injuries than a few outside a few moments before were killed as were persons standing on the sidewalk, who were struck by wreckage.

A taxicab from which two fares had just alighted and the driver of which had crossed the street to a refreshment stall, was smashed to atoms.

Eleven persons were killed and four injured in the aerial attack on London on Saturday, it is announced officially.

## UNITED STATES FOOD ADMINISTRATION, S. C.

The report of the Statistical Division of the United States Food Administration for the week ending January 26th, indicates the price of milk in South Carolina is averaging 16 cents per quart, the general average throughout all the States being 12 1-2 cents, while in Utah about 9 1-4 cents seems to be the prevailing price.

The average prices for milk in your neighboring States are as follows:  
North Carolina .....147  
Florida .....153  
Georgia .....147

## CASTORIA

For Infants and Children  
In Use For Over 30 Years  
Always bears the Signature of *Chas. H. Hitchcock*

## AMERICAN SOLDIERS ON FAMOUS BATTLE LINE

Everything Tried by the Enemy Against Uncle Sam's Soldiers Has Been Discounted, and Often Doubly So

## ARMISTICE IN EAST ENDS

Berlin Makes Statement Germany Will Resume Free Hand in Every Direction in Regard to Russia

American troops in France now are in battle on three sectors—on their own line east of St. Mihiel, with the French in Champagne and on one of the most famous battle fronts in the world, where ruined villages and the devastated country generally tell the tale of hard fought battles when the Germans pushed forward their line and ultimately were driven back by the French.

Everywhere the Americans are proving themselves fighters of the highest calibre, winning enmities from high French officers for their business-like methods of warfare and especially their skill in the use of artillery. Already the men are veterans, for nothing the Germans have in stock remains to be shown them, except a great mass attack. Thus far everything that has been tried by the enemy against them has been discounted, and in some instances doubly discounted.

**Cool Under Fire**  
Stories from the front by the Associated Press tell of the intrepidity of the men in trench raiding operations, of their coolness under fire and in returning fire, the accuracy of aim of the gunners and the intense watchfulness at observation posts to see that the enemy obtains no undue advantage in surprise attack.

The only criticism thus far heard regarding the Americans is their desire to be up and at the enemy. Like their brothers in the North—the Canadians—they are hard to hold in restraint. As one distinguished French officer expressed it, "they are too anxious to get at grips with the enemy."

## No Signs of Offensive

There still is no indication of the near approach of the expected big offensive by the Germans along the line in France and Belgium. The operations consist almost entirely of mutual bombardments and minor attacks by raiding parties. The roar of the big guns is greatest in the Champagne region on several sectors, particularly near Tahure, where one unit of the Americans is fighting shoulder-to-shoulder with the French. Likewise, all along the Italian front from Lake Garda to the middle of the Piave river artillery engagements are in progress.

Saturday night's attempted air raid on London proved a failure, only one German airplane of the six that came across the water reaching the capitol through the heavy barrage sent up by the British anti-aircraft batteries. One of the enemy's planes is reported to have been forced down into the sea as a result of a fight in the air with British aviators.

## Armistice Ends

The armistice between the Germans and the Russians has ended, according to an official communication issued in Berlin. In giving notice of the termination of the agreement to cease hostilities, this communication contains the grave statement that Germany resumes a free hand in every direction. Whether the Germans anticipate an immediate attack on the Russians has not developed but undoubtedly there is tense feeling between the German military officials and the Bolsheviks by reason of the fact that Leon Trotzky, the Bolshevik foreign minister, has not met the desires of Germany to frame a separate peace treaty with that country.

Dispatches from Petrograd indicate that German soldiers have declined to obey their commanders to move to the French front and even have given battle to brothers in arms who endeavored to force them to do so. In Petrograd, at last accounts, marked disorders were still prevailing, there being indiscriminate shooting and looting.

An Amsterdam dispatch says that Rumania intends under certain conditions to enter into peace negotiations with the Central powers.

## A NATIONAL DUTY

The treasury of the United States has a great deal of money to raise and it can't be raised by banks alone,

says Secretary McAdoo. The banks of this country can not alone sustain America's needs in this war and extend to our allies the essential aid which they must have to continue the war.

The rich of this country can not do it alone, the men of this country can not do it alone; the women of this country can not do it alone; but all of us, the people of the United States disregarding partisanship, forgetting selfish interests, thinking only of the supremacy of right and determined to vindicate the majesty of American ideals and secure the safety of America and civilization, can do the great and splendid work which God has called upon us to do.

## PROF. LONG HEADS RURAL WORK COMMITTEE

Spartanburg, S. C., Feb. 14.—Prof. W. W. Long, Director of Extension Division of Clemson College, has accepted the chairmanship of the Rural Work Committee of the South Carolina Sunday School Association, according to an announcement made here today at the State headquarters. It is the purpose of the State Sunday School Association to have associated with Prof. Long on this Committee many of the leaders throughout the State who are particularly interested in rural life and in plans for co-ordinating all the forces for community uplift. This committee will be advisory and will recommend plans for bringing about a closer co-operation of all the forces that affect the economic, social and religious life of the community. As the Sunday School Association is interdenominational in its nature, and as Sunday School problems are common to all denominations, it is believed that through this rural work committee plans will be devised for touching more vitally than ever before the entire life of every rural community in the State.

There are now five large committees of the South Carolina Sunday School Association to have associated statement from R. D. Webb, General Secretary, and when the membership of each is complete these committees will contain more than 200 Christian leaders of all denominations in South Carolina. The chairmen of these five committees are: Rev. W. H. K. Pendleton, Executive; Dr. H. N. Snyder, Educational; Mrs. S. N. Burts, Elementary; R. F. Boggs, Finance, and Prof. W. W. Long, Rural Work.

## ADVERTISE IN THE TIMES.

## State of South Carolina, County of Clarendon

Clarendon County, J. H. Rigby, Plaintiff,

against  
Dallas Riehbouge, John L. Riehbouge, Joshua E. Riehbouge, Florence Seals, Rich DeLaine, Annie Riehbouge, William Riehbouge, Pierce Riehbouge, Horton Sumter, Joseph Sumter, Jessie Sumter, Alenia Sumter, Lillie May Sumter, Willie Montgomery, James Montgomery and Joseph A. Riehbouge, in his own right and as administrator of estate of W. P. Riehbouge, Defendants.

Under and by virtue of a judgment order of the Court of Common Pleas in the above stated action, to me directed, bearing date of February 2nd, 1918, I will sell at public auction, to the highest bidder for cash, at Clarendon county court house, at Manning, in said county, within the legal hours for judicial sales, on Monday the 4th day of March, 1918, being sales day, the following real estate:

All that piece, parcel or tract of land situate in Clarendon county, State aforesaid, containing twenty-four and one half (24 1-2) acres, more or less, bounded as follows: North and East by lands of estate of Amzi Tindal; South by lands of W. J. Rawlinson; and West by lands of Henry Davis, being the land conveyed me by J. H. Timmons, Clerk of Court by deed recorded in office of Clerk of Court for Clarendon County in book K. 3 on page 271, reference being thereunto had. Purchaser to pay for papers.

E. B. GAMBLE, Sheriff Clarendon County.

## Whenever You Need a General Tonic Take Grove's.

The Old Standard Grove's Tasteless Chill Tonic is equally valuable as a General Tonic because it contains the well known tonic properties of QUININE and IRON. It acts on the Liver, Drives out Malaria, Enriches the Blood and Builds up the Whole System. 60 cents.

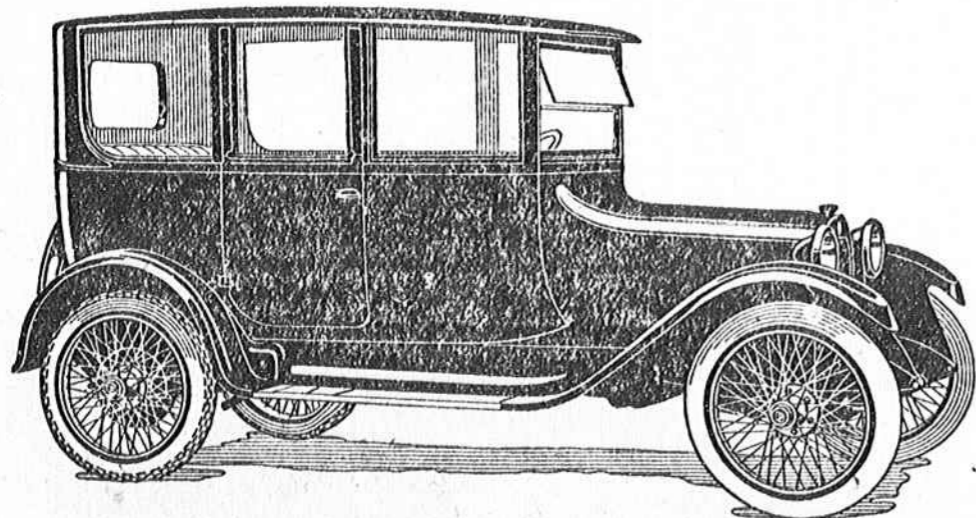
# DODGE BROTHERS CLOSED CAR

It is interesting to stop and recall how many good things you have heard of the car and how very few of the other sort.

It Will Pay You to Visit Us and Examine This Car.

The gasoline consumption is unusually low.  
The tire mileage is unusually high.

Sedan or Coupe \$1350; Winter Touring Car or Roadster, \$1050;  
Touring Car, Roadster or Commercial Car, \$885  
(All prices f. o. b. Detroit.)



SUMTER MOTOR CO.,  
SUMTER, S. C.