

The Pageland Journal

The paper that gets results for its advertisers.

Published Wednesday Mornings by Robert S. Latimer.

Robert S. Latimer, Editor.

October 11, 1922.



WATCH—What I say unto you I say unto all, Watch.—Mark 13:37.

By the way, how many of those...

...scraping battle...

...is the difference between...

Cover crops are essential to...

A dead boll weevil this fall and...

Do not hear much these days...

Boo hoo! North Carolina cannot...

It is said that the United States...

...any kind of receiving any salary...

Every now and then a Republican...

It is declared that greater business...

In one of the press reports of last...

We imagine the scrapping of warships...

Governor Hardwick of Georgia has...

WILL FIND YOU OUT

"Be sure your sins will find you out."

The above words were spoken nearly 1500 hundred years before Christ.

Another sacred writer says nearly 700 years before Christ that, "our sins testify against us."

Apparently there are many crimes hidden, but if we could have a complete record of all crimes committed we would awake to the fact that there are few crimes that are completely covered.

It can't be done. No use trying to get away from it if you murder somebody or kill some body in a fight. Forty-four years is a long time, measured in human life, but it is not long enough to cover up a homicide.

There is no doubt that sin is an accuser and one may feel secure in his sin, but at a time least expected he will realize that what he thought was a profound secret has become an open book.

The American public is great. We have something on hand in the way of amusement twelve months in the year.

...and the people worried and spending time and money, we have political fights annually, biennially and quadrennially, in school, town, county, state and national affairs.

The railroad and coal mine strikes eased off as suddenly as they jumped on. If any one individual or class of individuals received as much benefit from said strikes as evil, we would like to hear.

If, under boll weevil conditions a half crop of cotton made in Chesterfield county year, the situation is much better than it might have been we are more fortunate than other sections. By a determined fight against the pest early and planting the right type of cotton next year and doing it right, the Chester county farmers may be fortunate. But a cotton crop will not insure us against financial calamity, for not a crop may be made next year. The safest plan is to go probably light on cotton and rely on other crops and pay some attention to poultry, stock raising and trucking. We have the good climate and the opportunity the question is what will be done to meet the situation and our condition. Now is the time to begin planning for a crop year.

ROUTE ONE

Mrs. W. C. Braswell, of Florence, has returned home after a two week's visit to her daughter Mrs. L. B. Price.

Mr. Townley Watts, Charlotte visitor Saturday and Sunday.

Born to Mr. and Mrs. Price Sept. 26 a daughter Lee.

Mr. T. B. Watts visited by Lex B. Watts, at Florence Saturday.

Misses Iris McNair, Edna Sellers, Pauline and Leila Allen of Ruby, and Messrs. Joe Robertson, Ben and Tom Outen were the dinner guests of Miss Watts Sunday.

Mr. and Mrs. Lee spent Sunday in Charleston.

Mrs. J. R. Outen is spending some time in...

State of South Carolina
County of Chesterfield
Court of Common Pleas
C. M. Tucker, Plaintiff,
vs.
W. P. Guin, et al. Defendants.

By virtue of an order made in the above entitled cause Judge R. O. Purdy, on Sept. 22, 1922, I will sell to the highest bidder, for cash, before the Court House door in Chesterfield, S. C., on Monday, November 13, 1922, same being sales day, that certain piece, parcel or tract of land lying and being in the County and State aforesaid, containing fifty acres, more or less and bounded as follows: on the North by lands of H. B. Guin, on the East by lands of H. B. Guin, on the South by lands of H. B. Guin, Adams lands and on the West by lands of W. H. Guin.

Dated at Chesterfield, S. C. this the 10th day of Oct 1922.
C. L. Hunley,
Special Master.

2 Cars Flour Going Cheap

Mill Feed, Cotton Seed Meal, Salt, Seed Rye.

See Us B 4 U Buy

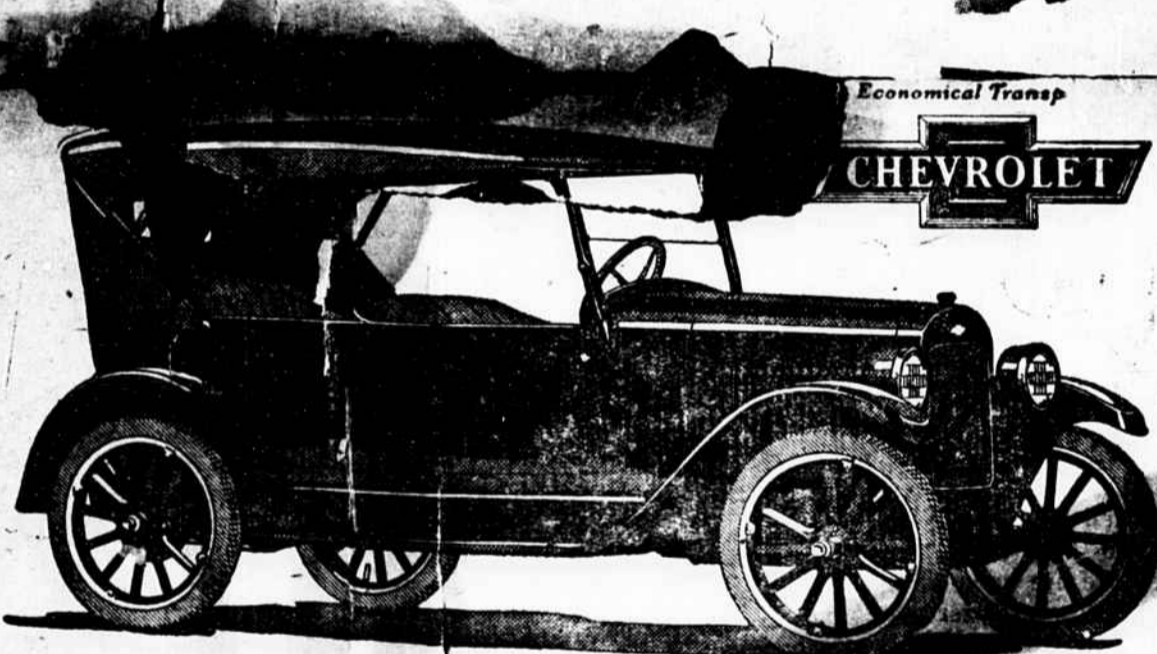
YOUR

DRY GOODS, SHOES, UNDERWEAR, OVERALLS, DRESS SHIRTS, WORK SHIRTS, PANTS, UNION ALLS

All Going Cheap.

A few more Cabbage \$2.50 hundred lbs. at the car. Get yours before they are all gone.

Moore & Mungo, The Busy Store,



Announcing 1923 SUPERIOR Models

Again Chevrolet Motor Company has emphasized its admitted leadership as producer of the World's Lowest Priced Quality Automobiles.

The 1923 SUPERIOR models—one of which is here illustrated—represent the most sensational values in modern, economical transportation ever established.

QUALITY has been still further improved by more artistic design and added equipment.

ECONOMY has been still further increased by engineering refinements and added facilities.

SERVICE is now offered on a flat rate basis by 10,000 dealers and service stations.

PRICES remain the same in spite of added equipment and more expensive construction, which have greatly increased value.

Some Distinctive Features

Streamline body design with high hood; vacuum feed and rear gasoline tank on all models; drum type head lamps with legal lenses. Curtains open with doors of open models. Closed models have plate glass. Fernstedt regulated windows, straight side cord tires, sun visor, windshield wiper and dash light. The Sedanette is equipped with auto trunk on rear.

Prices f. o. b. Flint, Mich.

Five Passenger Touring	\$525
Two Passenger Roadster	510
Five Passenger Sedan	860
Four Passenger Sedanette	850
Two Passenger Utility Coupé	680

See these remarkable cars. Study the specifications. Nothing Compares With Chevrolet

Pageland Motor Co.

Pageland, S. C.

CHEVROLET AGENTS FOR CHESTERFIELD COUNTY.

LOOK AND LISTEN

The expected car of Danish Cabbage has arrived and we are selling them at the car for 2 1-2c. per pound. Get your barrels, kegs, churns, and jars ready and bring your sacks and boxes and have them filled. Remember this is at

G. C. Mangum & Co.