

THE PHOENIX

Published Daily and Tri-Weekly,
THE CLEANER
Every Wednesday Morning,
BY JULIAN A. SELBY,
Editor and Proprietor.

Office on Richardson St., near Taylor.

The PHOENIX is the oldest Daily Paper in South Carolina, has the largest circulation in the upper portion of the State, and has been regularly issued since its inception—March 31, 1865.

Book and Job Printing of every description faithfully attended to.

Daily, six months, \$4; Tri-Weekly, 2 50; Weekly, 1 50.

Advertisements inserted in the Daily at \$1 a square of nine lines for first, and 50 cents each subsequent insertion; if not exceeding five lines in length, 75 cents. Long advertisements by the week, month or year, at less rates. Marriages, funeral invitations, &c., \$1.

John Poppe, Attorney; Robert Bryce, Spartanburg; J. A. Grigsby, Ridgeway; E. A. Bond, Newberry; H. W. Payson, Abbeville.

MAIL ARRANGEMENTS.—Northern mail opens 6.30 A. M., 3 P. M.; closes 11 A. M., 6 P. M.; Charleston opens 8 A. M., 5.30 P. M.; closes 8 A. M., 6 P. M.; Western opens 6 A. M., 1 P. M.; closes 6.15 P. M.; Greenville opens 6.45 P. M.; closes 6 A. M., Wilmington opens 4 P. M.; closes 10.10 A. M. On Sunday open from 2.30 to 3.30 P. M.

The Abbeville Bible Society celebrated its fifty-first anniversary, the Hon. Thomas O. Pettin in the chair, at the Presbyterian Church, on Wednesday, July 29. The annual sermon was delivered by Rev. W. M. Grider, D. D., and the annual address by Rev. W. C. Bess. The congregation was large and the occasion was one of unusual interest. A donation of \$100 was given to the Parent American Bible Society.

Dr. John Wilson, of Dayton, England, has just died, in consequence of a lamentable accident. While performing a post mortem examination, he unknowingly poisoned himself with morphia.

Miss Peters, of Washington, is the champion surf-bather at Atlantic City. She goes out so far that gentlemen get frightened and call in heartrending tones for brandy and soda.

The latest issue of the New York Ledger contains the beginning of a new serial story, entitled "In the Wrong Nest." This is rather rough on its old contributor.

M. Rochester has revived the publication of the *Lanterne* in London. The paper is issued in French and English, and is pronounced dull by the conservative organ.

At the Norwich, Conn., election, on the 3d, James Lloyd Greene was elected Mayor by a remarkable vote, receiving every vote but six.

Gen. Ouster has been compelled to sacrifice his golden curls, lest the Kiowa may get them.

TO COMMERCIAL TRAVELERS.

Carry by card, catalogue, trade list, sample or other specimen, also those who visit their customers and solicit trade by purchase made direct from stock, and who travel in any section, by rail or boat, selling any class of goods, are requested to send their BUSINESS and PRIVATE ADDRESS, as below, stating class of goods they sell and by whom employed; also, those who are at present under no engagement individually to salesman of this class, or men soliciting trade in this manner. It is, therefore, especially desired that this notice may meet the eye of all Commercial Travelers and Salesmen in this country, and that they will at once give it their attention. Those who comply with above request will be confidentially treated and duly advised of object in view. Please address (by letter only) CO-OPERATION, Care of E. B. BOWELL & CO., 41 Park Row, New York City. July 29th

DR. GREENE, LINDLEY & BENTLEY'S Great Family Medicines.

COMPOUND EXTRACT CORYDALIS

is the great vegetable alternative for all diseases arising from impure blood.

DR. GREENE'S FIT CURE

for the cure of Epilepsy, Fits, Spasms, and convulsions of all kinds.

Medicated Honey

for Coughs, Colds, Bronchitis, Croup, and all diseases of the lungs and air passages.

Neuralgia Specific

a certain and speedy cure for Neuralgia, Rheumatism, Nervous Head-ache, and all nervous pains.

Wabash Valley Ague Cure

Contains no Quinine. A most positive remedy for Chills, Bilious Fever, and Congestions of Liver and Spleen. Acts like a charm.

Prepared at the Laboratory, Charlotte, N. C. For sale by W. C. FISHER, Nov 20 117 Columbia, S. C.

\$300,000

MISSOURI STATE LOTTERIES!

Legalized by State Authority, and DRAWN IN PUBLIC IN ST. LOUIS.

Grand Single Number Schemes of 50,000 Numbers!

DRAWN THE LAST DAY OF EACH MONTH.

CAPITAL PRIZE, \$50,000!
10,350 Prizes, amounting to \$300,000.
Whole Tickets, \$10; Half, 5; Quarters, 2.50

The Great Combination Scheme, with a CAPITAL PRIZE OF \$32,500! and 32,396 Prizes, amounting to \$578,177!

Draws Every Saturday During the Year. Whole Tickets, \$10; Half, 5; Quarters, 2.50. Address, for tickets and circulars, MURRAY, MILLER & CO., Managers, P. O. Box 2,446, St. Louis, Mo. April 7 117

NILES G. PARKER, EDGAR C. FISHER, PARKER & CAYLER, Attorneys and Counselors at Law, ROOM 1 Parker's Block, Main-street, Columbia, S. C. May 10

TO THE READING PUBLIC

If you want a Thorough Newspaper, SUBSCRIBE FOR

THE PHOENIX,

Daily and Tri-Weekly; or

WEEKLY CLEANER

Issued every Wednesday,
IN COLUMBIA, SOUTH CAROLINA.



The PHOENIX is the oldest daily paper in the State, and has been regularly issued since March, 1865.

THE LATEST INTELLIGENCE.

By Telegraph and Mail, from nearly all parts of the World; together with full

MARKET REPORTS;

Besides well selected MISCELLANEOUS and READING MATTER, of interest to everybody, will be found in these publications.

THE EDITORIALS

Are carefully prepared, by competent writers; while special attention is given

THE LOCAL DEPARTMENT.

Taken as a whole, NO BETTER OR MORE SATISFACTORY INVESTMENT can be made, than a subscription to one of the other of these publications. They are Conservative in politics, and are devoted to the best interests of the State. The following are the

TERMS FOR SIX MONTHS.

Daily PHOENIX.....\$4 00
Tri-Weekly.....2 50
Weekly CLEANER (48 columns)...1 50
These papers were the first issued in Columbia, in 1865, after its partial destruction, and have been regularly published ever since. They

CIRCULATE EXTENSIVELY

Throughout middle and upper Counties of the State, and are excellent

MEDIUMS FOR ADVERTISING.

The PHOENIX has a greater circulation through the upper part of South Carolina than any other daily paper. Merchants and others will find its columns an admirable means of communication with the people of the entire up-country. Advertising rates are reasonable. Send advertisements marked with the number of insertions desired, and they will be stopped upon the expiration of the time. Office on Richardson street, between Taylor and Blending.

JULIAN A. SELBY, Proprietor.

Have your Job Printing done Home.

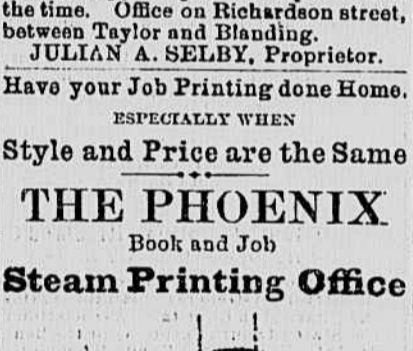
ESPECIALLY WHEN

Style and Price are the Same

THE PHOENIX

Book and Job

Steam Printing Office



Is thoroughly supplied with POWER PRESSES of the Latest Improvement; TYPE of various grades and styles from one foot to the fiftieth part of an inch in size; BORDERS, CUTS, &c.; Black, Colored and Transfer INKS; PAPER, CARDS, &c.

The proprietor is a practical printer and employs the most skilled men in the profession; work executed at shortest notice possible, in latest and best styles and at New York prices. CALL and EXAMINE SPECIMENS of

SEEGERS' vs. Cincinnati Beer.

The Cincinnati Gazette makes the following announcement that Cincinnati beer is no longer pure, but adulterated with molasses, sugar of starch, fusel oil and the poisonous cochineal. The Commissioner of Agriculture, in his report for 1865, says that Prof. Mapes, of New York, analyzed the beer from a dozen different breweries, and found all of it adulterated. Cochineal, Indigo and nuxvomica entered largely into its composition.

J. C. SEEGERS guarantees his beer to be pure and reliable. He does not adulterate it, but brews from the best barley, malt and hops.

Catawba Wine.

PURE Kelley Island CATAWBA, on hand and for sale low by

JOHN AGNEW & SON.

Imported Wines, Brandies, Etc., Etc.

SCOTCH WHISKIES, Old Jamaica Rum, Brandy—Otard, &c., Holland Gin,

Sherry Wine, Port Wine, Madeira Wine, Also, a large stock of fine old Whiskies, Cigars, &c.

Seegers' vs. Cincinnati Beer.

The Cincinnati Gazette makes the following announcement that Cincinnati beer is no longer pure, but adulterated with molasses, sugar of starch, fusel oil and the poisonous cochineal. The Commissioner of Agriculture, in his report for 1865, says that Prof. Mapes, of New York, analyzed the beer from a dozen different breweries, and found all of it adulterated. Cochineal, Indigo and nuxvomica entered largely into its composition.

J. C. SEEGERS guarantees his beer to be pure and reliable. He does not adulterate it, but brews from the best barley, malt and hops.

Catawba Wine.

PURE Kelley Island CATAWBA, on hand and for sale low by

JOHN AGNEW & SON.

Columbia Hotel

FIRST CLASS HOUSE.

A CHANGE of management, and many consequent improvements, enables the proprietors to offer to the traveling public more comforts and conveniences than can be obtained at any other place in the city.

TELEGRAPH OFFICE, BILLIARD and BATH ROOMS in the house. Every attention guaranteed.

GORMAN & CALMAN, Proprietors. March 4

ROSE'S HOTEL, COLUMBIA, S. C.

WM. E. ROSE, Proprietor.

Another First Class Hotel—Fare \$2.50 a Day, including Omnibus Ride. SITUATED NEAR THE CAPITOL and in the centre of the business part of the city. Rose's Omnibus will convey passengers to and from every Train. The Ladies' Apartments are complete, with private entrance on Assembly street. The BILLIARD and BATH ROOMS are all new and superior to any in the city. April 5

GREAT SOUTHERN FREIGHT AND PASSENGER LINE

VIA

CHARLESTON, S. C.,

TO AND FROM

BALTIMORE, PHILADELPHIA, NEW YORK, BOSTON,

AND

ALL THE NEW ENGLAND MANUFACTURING CITIES.

Three Times Week from New York—Tuesday, Thursday and Saturday. An Elegant State Room Accommodation. Sea Voyage 10 to 12 Hours Shorter, "via Charleston." TOTAL CAPACITY, 40,000 BALES MONTHLY.

The South Carolina Railroad Company.

AND connecting Roads West, in alliance with the fleet of thirteen first class Steamships to the above ports, invite attention to the quick time and regular despatch afforded to the business public in the Cotton States at the PORT OF CHARLESTON, offering facilities of rail and sea transportation for Freight and Passengers not excelled in excellence and capacity at any other port. The following splendid Ocean Steamers are regularly on the line:

TO NEW YORK. CHARLESTON... Jas. Berry, Commander. CHAMPTON... J. W. Lockwood, Com'r. JAMES ADGER... T. J. Lockwood, Com'r. MANHATTAN... M. S. Woodhull, Com'r. GEORGIA... S. Crowell, Commander. SOUTH CAROLINA... T. J. Beckett, Com'r. WM. A. COURTNEY, WAGNER, BUGER & CO., Agents, Charleston, S. C. Sailing Days—TUESDAYS and SATURDAYS.

TO PHILADELPHIA. Iron Steamships ASHLAND, Alex. Hunter, Com'r. EQ'ATOR, Hinckley, Com'r. Sailing Days—FRIDAYS. WM. A. COURTNEY, Agent, Charleston, S. C.

TO BALTIMORE. FALCON... Haine, Commander. SEA GULL... Dutton, Commander. Sailing Days—Every Fifth Day. PAUL C. TRENHOLM, Agent, Charleston, S. C.

TO BOSTON. Steamships MERCEDITA and FLAG. Sail every Saturday. JAMES ADGER & CO., Agents, Charleston, S. C. Rates guaranteed as low as those of competing lines. Marine Insurance, one-half of one per cent.

THROUGH BILLS OF LADING AND THROUGH TICKETS

Can be procured at all the principal Railroad Offices in Georgia, Alabama, Tennessee and Mississippi.

State Rooms may be secured in advance, without extra charge, by addressing the Agents of the Steamships in Charleston, at whose offices, in all cases, the Railroad Tickets should be exchanged and Berths assigned. The Through Tickets by this route include Transfers, Meals and State Room, while on ship-board.

THE SOUTH CAROLINA RAILROAD, GEORGIA RAILROAD

And their connecting lines, have largely increased their facilities for the rapid movement of Freight and Passengers between the Northern cities and the South and West, First Class Eating Saloon at Branchville. On the Georgia and South Carolina Railroads, first class Sleeping Cars.

Freight promptly transferred from the steamers to day and night trains of the South Carolina Railroad. Close connection made with other Roads, delivering Freights at distant points with great promptness. The managers will use every exertion to satisfy their patrons that the line via Charleston cannot be surpassed in dispatch and the safe delivery of goods.

For further information, apply to T. J. GREEN, Western Agent, Atlanta, Ga.; B. D. HABELL, General Agent, P. O. Box 4 979, Office 317 Broadway, N. Y.; S. B. PICKENS, General Passenger and Ticket Agent, South Carolina Railroad, or J. M. BARKER, Superintendent Great Southern Freight and Passenger Line, Charleston, S. C. Jan 30 117

CONGAREE IRON WORKS,

COLUMBIA, S. C.

JOHN ALEXANDER, Proprietor.

MANUFACTURER OF STEAM ENGINES, SAW AND GRIST MILLS, GIN

Gearing, and all kinds of Iron Castings for Stores and Dwellings, Patent Railings for Gardens and Cemeteries, Iron Seats and Arbor Chairs; also, Brass Castings of all kinds, Bells for Churches, Schools, Work-shops, &c. Guarantees all my work first class and equal to any North or South.

Works at foot of Lady street and near to South Carolina and Greenville & Columbia Railroad Companies' Depots. Nov 18

MONEY TO LOAN,

On Marketable Collaterals.

EXCHANGE on New York, Baltimore, Philadelphia, Boston and all prominent cities of the United States and Europe bought and sold.

DEPOSITS received and interest-bearing certificates issued.

STOCKS, BONDS, GOLD and SILVER bought and sold.

ACCOUNTS of merchants and others from the city and country solicited, and LIBERAL LINES OF DISCOUNTS granted by the CENTRAL NATIONAL BANK, Corner of Main and Richardson streets.

GENUINE

Imported Wines, Brandies, Etc., Etc. SCOTCH WHISKIES, Old Jamaica Rum, Brandy—Otard, &c., Holland Gin,

Sherry Wine, Port Wine, Madeira Wine, Also, a large stock of fine old Whiskies, Cigars, &c.

Seegers' vs. Cincinnati Beer.

The Cincinnati Gazette makes the following announcement that Cincinnati beer is no longer pure, but adulterated with molasses, sugar of starch, fusel oil and the poisonous cochineal. The Commissioner of Agriculture, in his report for 1865, says that Prof. Mapes, of New York, analyzed the beer from a dozen different breweries, and found all of it adulterated. Cochineal, Indigo and nuxvomica entered largely into its composition.

J. C. SEEGERS guarantees his beer to be pure and reliable. He does not adulterate it, but brews from the best barley, malt and hops.

Catawba Wine.

PURE Kelley Island CATAWBA, on hand and for sale low by

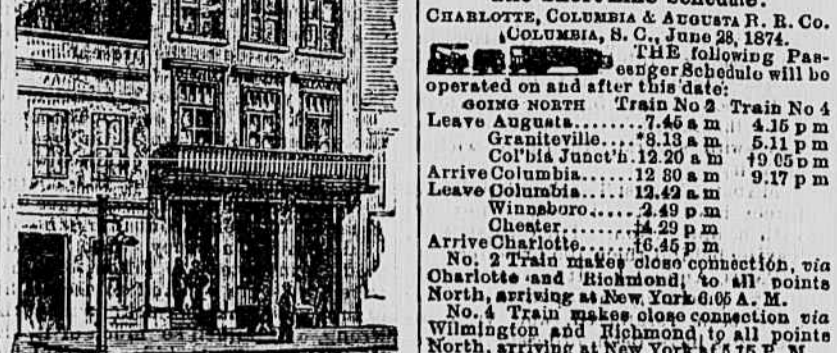
JOHN AGNEW & SON.

THE PHOENIX

Book, Job and Newspaper Steam

PRINTING ESTABLISHMENT!

THE Proprietor of the PHOENIX has thoroughly fitted his office with the latest Improved Material for doing all kinds Printing.



Summer Schedule S. & U. R. E.

DOWN TRAIN	UP TRAIN
Spartanburg..... 11.00	2.45
Batesville..... 11.35	2.17
Pacolet..... 11.40	2.05
Jonesville..... 12.15	1.28
Unionville..... 12.15	1.10
Santee..... 1.42	1.10
Flint Dam..... 2.12	1.10
Shiloh..... 2.28	1.04
Lyles' Ford..... 2.45	1.04
Strothers..... 3.07	1.00
Alston..... 4.00	9.10

June 25 W. W. DAVIES, Sup't.

The Short Line Schedule.

CHARLOTTE, COLUMBIA & AUGUSTA R. R. CO. (COLUMBIA, S. C., June 28, 1874.)

THE following Passenger Schedule will be operated on and after this date:

GOING NORTH Train No 2 Train No 4

Leave Augusta..... 7.45 a.m.	4.15 p.m.
Graniteville..... 8.33 a.m.	5.11 p.m.
Columbia Junction..... 9.20 a.m.	6.05 p.m.
Leave Columbia..... 12.20 a.m.	9.17 p.m.
Leave Columbia..... 12.42 a.m.	
Winnabow..... 4.49 a.m.	
Chester..... 4.29 p.m.	
Arrive Charlotte..... 10.45 p.m.	

No. 2 Train makes close connection, via Charlotte and Richmond, to all points North, arriving at New York 6.06 A. M.

No. 4 Train makes close connection via Wilmington and Richmond to all points North, arriving at New York 6.15 P. M.

GOING SOUTH Train No 3

Leave Charlotte..... 8.50 a.m.	
Chester..... 11.02 a.m.	
Winnabow..... 12.38 p.m.	
Arrive Columbia..... 9.42 p.m.	
Leave Columbia..... 2.52 p.m.	8.40 a.m.
Columbia Junction..... 4.15 a.m.	
Graniteville..... 7.15 p.m.	7.48 a.m.
Arrive Augusta..... 8.05 p.m.	8.45 a.m.

Breakfast, Dinner, & Supper.

South bound Trains connect at Augusta for all points South and West. Through tickets sold and baggage checked to principal points. Sleeping cars on all Night Trains. JAS. ANDERSON, General Sup. A. POPE, Gen. Passenger and Ticket Agent

Wilmington, Columbia and Ang R R

GENERAL PASSENGER DEPART., COLUMBIA, S. C., October 18, 1874.

THE following Schedule will be operated on and after this date:

GOING NORTH TRAIN NO 2 TRAIN NO 4

Leave Columbia..... 6.00 a.m.	8.45 p.m.
Florence..... 12.25 p.m.	2.10 a.m.
Arrive Wilmington..... 7.15 p.m.	7.15 a.m.

GOING SOUTH TRAIN NO 1 TRAIN NO 3

Leave Wilmington..... 8.00 a.m.	10.10 p.m.
Florence..... 9.00 p.m.	11.37 p.m.
Arrive Columbia..... 4.00 a.m.	4.00 a.m.

Train No. 2, from Columbia, and Train No. 1, from Wilmington, connect at Florence, and there connects closely with N. E. R. R., and at Wilmington with W. & W. R. R. to all points North.

Train No. 4 from Columbia is fast Express, making through connections, all rail, North and South, and water line connections via Portsmouth.

Train No. 1, from Wilmington, connects closely with N. E. R. R. for Charleston, and is an accommodation train thence to Columbia.

Train No. 3, from Wilmington, is a fast Express, connecting closely from and to all points North and South. Through tickets sold and baggage checked to all principal points. Pullman palace sleepers on night trains. Breakfast, Dinner, & Supper.

Accommodation Train No. 2 leaves Columbia daily, Sundays excepted. Express Train No. 4 leaves Columbia every night.

JAS. ANDERSON, General Sup. A. POPE, Gen. Passenger and Ticket Agent

Greenville and Columbia Railroad

PASSENGER TRAINS run daily, Sundays excepted, connecting with Night Trains on South Carolina Railroad and South down; with Trains going North and South on Charlotte, Columbia and Augusta and Wilmington, Columbia and Augusta Road's UP.

Leave Columbia at..... 7.15 a.m.

Leave Alston..... 9.05 a.m.

Leave Newberry..... 10.40 a.m.

Leave Cokesbury..... 2.00 p.m.

Leave Belton..... 3.50 p.m.

Arrive at Greenville..... 5.30 p.m.

Leave Greenville at..... 7.30 a.m.

Leave Belton..... 9.30 a.m.

Leave Cokesbury..... 11.15 a.m.

Leave Newberry..... 2.20 p.m.

Leave Alston..... 4.20 p.m.

Arrive at Columbia..... 6.00 p.m.

Anderson Branch and Blue Ridge Division DOWN.

Leave Wallhalla 5.45 a.m. Arrive 7.15 p.m.

Leave Perryville 6.25 a.m. 6.35 p.m.

Leave Pendleton 7.10 a.m. 5.50 p.m.

Leave Anderson 8.10 a.m. 4.50 p.m.

Arrive at Belton 9.00 a.m. Leave 3.50 p.m.

Accommodation Trains run on Abbeville Branch Monday, Wednesday and Fridays. On Anderson Branch, between Belton and Anderson, Tuesday, Thursday and Saturday. THOMAS DODDHEAD, Gen. Sup. JABEZ NORTON, General Ticket Agent.

Change of Schedule.

SOUTH CAROLINA RAILROAD COMPANY, COLUMBIA, S. C., October 18, 1873.

Change Schedule to go into effect on and after Sunday, 19th instant:

MAIL AND PASSENGER TRAIN.

Leave Columbia at..... 8.40 a.m.	
Arrive Charleston at..... 4.20 p.m.	
Leave Charleston at..... 9.00 p.m.	
Arrive Columbia at..... 5.00 p.m.	

NIGHT EXPRESS, FREIGHT and ACCOMMODATION TRAIN, Sundays excepted.

Leave Columbia 7.15 p.m. Arrive..... 6.30 p.m.	
Arrive Charleston 7.10 p.m. Leave..... 6.45 p.m.	

Camden Train runs Monday, Wednesday and Saturday, as follows:

Leave Columbia 1.50 p.m. Arrive 11.50 a.m.	
Leave Camden 6.50 a.m. Arrive 6.35 p.m.	

S. B. PICKENS, General Ticket Agent

Piedmont Air-Line Railway.

CONDENSED TIME TABLE: ABLE, Richmond and Danville, Richmond and Danville, K. W. N. C. Division, and North Western, N. C. R. W. GOING NORTH.

STATIONS	MAIL	EXPRESS
Leave Charlotte..... 7.10 P. M.	6.25 A. M.	
Leave Salisbury..... 9.50 P. M.	8.34 A. M.	
Leave Greensboro..... 1.40 A. M.	11.16 A. M.	
Leave Danville..... 4.22 A. M.	1.52 P. M.	
Leave Burlington..... 9.44 A. M.	6.40 P. M.	
Arrive at Richmond..... 12.46 A. M.	9.26 P. M.	

GOING SOUTH.

Leave Richmond..... 2.34 P. M.	6.10 A. M.	
Leave Danville..... 10.41 P. M.	12.57 P. M.	
Leave Burlington..... 2.15 A. M.	4.00 P. M.	
Leave Greensboro..... 4.51 A. M.	6.22 P. M.	
Arrive at Charlotte..... 7.20 A. M.	8.36 A. M.	

GOING EAST.

Leave Greensboro..... 1.45 A. M.	11.10 A. M.	
Leave Company Shops 3.86 A. M. Arrive 2.01 P. M.		
Leave Raleigh..... 8.05 A. M.		
Arrive at Goldsboro..... 11.05 A. M.		

GOING WEST.

Leave Goldsboro..... 4.01 P. M.		
Leave Raleigh..... 7.45 P. M.		
Leave Company Shops 1.30 A. M. 2.15 P. M.		
Private Greensboro 1.30 A. M. 3.50 P. M.		
North-western N. C. R. W. 11.20 A. M.		
Leave Greensboro 3.40 A. M. Arrive 10.20 A. M.		
Leave Kernersville 9.00 A. M. Arrive 5.10 A. M.		

Mailtrains daily, both ways, over the length of road. Express daily between Company Shops and Charlotte, Sundays excepted. S. E. ALLEN, Gen. Ticket Agent. T. M. R. TALBOT, Engineer and Gen. Supt.