

# THE PHOENIX

Published Daily and Tri-Weekly,

## THE CLEANER

Every Wednesday Morning,

BY JULIAN A. SELBY,

Editor and Proprietor,

Office on Richardson St., near Taylor.

The PHOENIX is the oldest Daily Paper in South Carolina, having the longest circulation in the upper portion of the State, and has been regularly issued since its inception—March 21, 1865.

Book and Job Printing of every description faithfully attended to.

Subscription: Daily, six months, \$4 00; Tri-Weekly, 2 50; Weekly, 1 50.

Advertisements: Inserted in the Daily at \$1 per square of nine lines for first, and 50 cents each subsequent insertion; not exceeding five lines in length, 75 cents per year, at less rates, Marriage, Funeral Invitations, &c., \$1.

AGENTS:

- E. H. Bates, Union.
- Julius Poppe, Anderson.
- H. W. Lawson, Abbeville.
- Robert Bryce, Spartanburg.
- D. D. Moore, Rock Hill.
- J. A. Grigsby, Ridgeway.

October.

There comes a month in the weary year—  
A month of leisure and healthful rest;  
When the ripe leaves fall and the air is clear—  
October, the brown, the crisp, the best.

My life has little enough of bliss;  
I drag the days of the odd eleven,  
Counting the time that shall lead to this,  
The month that opens the hunter's heav'n.

And, oh! for the mornings crisp and white,  
With the sweep of the hounds upon the track;  
The bark-roofed cabin, the camp-fire's light,  
The break of the deer and the rifle's crack.

Do you call this trifling? I tell you, friend,  
A life in the forest is past all praise;  
Gives me a dozen such months on end—  
You may take my balance of years and days.

For brick and mortar breed fish and crime,  
And a pulse of evil that throbs and beats;  
And men grow withered before their prime,  
With the curse payed in on the lanes and streets;

And lungs are choked and shoulders are bowed  
In the smothering reek of mill and mine;  
And Death stalks in on the struggling crowd,  
But he shuns the shadow of oak and pine.

And of all to which the memory clings,  
There is naught so sweet as the sunny spots,  
Where our shanties stood by the crystal springs,  
The vanished hounds and the lucky shots.

A sharp boy in Cincinnati was sent  
After arsenic, but he spent the money,  
Filled the can with water, and his father  
Went over and pounded the grocer for swindling him.

### Harrison, Bradford & Co.'s

#### STEEL PENS.

Special attention called to the well-known numbers, 505-75-35-30 and 23.

Factory, Mt. Vernon; Office, 75 John street, New York. Aug 7 3mo.

### If You Want to Save Money,

BUY YOUR GROCERIES and PROVISIONS at **HARDY SOLOMON'S**.

50 Boxes Shoulders, FOR sale at 9 cents per pound, at Oct. 14 **SOLOMON'S**.

Planters Can Get the Highest Price FOR their COTTON, and buy their GROCERIES at the cheapest rates, at Sept 24 **HARDY SOLOMON'S**.

### Family Supplies.

CHOICE GOSENER BUTTER and CHEESE, Fresh Lemon, Milk, Soda and Cream BISCUIT; Smoked Beef, choice TEAS, Java and Mocha COFFEES; Folia London MUFFIN; Nelson's London GELATINE; Flavoring EXTRACTS and SPICES, &c., for sale low for cash. **HOPE & GYLES**.

### Columbia Music Store



### Lybrand & Son

TAKE pleasure in calling the attention of the public to an examination of their STOCK of MUSICAL MERCHANDISE, consisting of Pianos, Church and Parlor Organs, Melodeons, Violins, Guitars, Banjos, Flutes, Accordions, Brass and Silver Band Instruments of all kinds. Also, Sheet Music and Instruction Books for every class of Musical Instruments on hand at all times. We are Sole Agents for the State of South Carolina of Estey & Co.'s COTTAGE ORGANS. Sheet Music sent by mail, post paid, on receipt of price; and all kinds of Musical Goods sent by Express, when ordered, to any part of the State, marked C. O. D. Good Second-hand Pianos and Organs for sale cheap, for cash. Pianos, Organs and Melodeons Tuned and Repaired in a satisfactory manner; and will give special attention to Packing, Removing and Shipping Pianos for other parties to any point desired, at moderate prices.

All orders promptly attended to and satisfaction guaranteed to those favoring us with their patronage. Send for our catalogue of Sheet Music and Musical Merchandise. Richardson street, a few doors above Phoenix office, Columbia, S. C. No 7

**For Sale Cheap.**  
ONE eight-horse Portable STEAM ENGINE. Can be seen at work at Mr. Charles Logan's Gin House. For further particulars apply to **ROBERT McDOUGALL**, Sept 28 1mo. At the Gin House.

### Wilmington, Columbia and Augusta R.

GENERAL PASSENGER DEPART.

COLUMBIA, S. C., October 9, 1873.

The following Schedule will be operated on and after Sunday, October 9:

GOING NORTH.		
Day Train.	Night Train.	Leaves.
Leave Columbia	4:30 p.m.	4:45 p.m.
Florence	7:00 p.m.	7:15 p.m.
Flemington	7:45 p.m.	8:00 p.m.
Arrive Wilmington	10:00 p.m.	7:10 a.m.

Day Train makes close connection, via Richmond, to all points North, arriving New York 5:40 A. M. Night Train makes close connection, via old Bay Line and also Richmond, to all points North, arriving New York 4:25 P. M.

GOING SOUTH.		
Day Train.	Night Train.	Leaves.
Leave Wilmington	4:30 a.m.	6:10 p.m.
Flemington	6:34 a.m.	7:45 p.m.
Florence	10:45 a.m.	11:35 p.m.
Arrive Columbia	13:08 p.m.	4:40 p.m.

### The Short Line Schedule.

CHARLOTTE, COLUMBIA and AUGUSTA R. R. Co., COLUMBIA, S. C., October 9, 1873.

The following Passenger Schedule will be operated on and after SUNDAY, the 12th inst:

GOING NORTH.		
Day Train.	Night Train.	Leaves.
Leave Augusta	4:30 a.m.	4:15 p.m.
Grantville	5:47 a.m.	5:11 p.m.
Batesville	8:25 a.m.	7:22 p.m.
Columbia	10:45 a.m.	9:37 p.m.
Chester	13:33 p.m.	2:28 a.m.
Arrive Charlotte	16:20 p.m.	5:15 a.m.

Day Train makes close connection, via Richmond, to all points North, arriving New York at 6:40 A. M.; also, via Raleigh and Old Bay Line, arriving at New York at 4:25 P. M. Night Train makes close connection, via Richmond, to all points North, arriving at New York at 4:25 P. M.

GOING SOUTH.		
Day Train.	Night Train.	Leaves.
Leave Charlotte	7:00 a.m.	8:30 p.m.
Chester	8:54 a.m.	10:58 p.m.
Columbia	12:48 p.m.	3:40 a.m.
Batesville	4:57 p.m.	5:43 a.m.
Grantville	7:15 p.m.	7:48 a.m.
Arrive Augusta	8:05 p.m.	8:45 a.m.

### Piedmont Air-Line Railway.

CONDENSED TIME TABLE, Richmond, Danville, and Danville, Richmond and Danville, R. W. N. C. Division, and North Western N. C. R. W.

GOING NORTH.		
STATIONS.	MAIL.	EXPRESS.
Leave Charlotte	7:10 P. M.	6:25 A. M.
Leave Salisbury	9:50 P. M.	8:34 A. M.
Leave Greensboro	1:40 A. M.	11:10 A. M.
Leave Danville	4:32 A. M.	1:52 P. M.
Leave Burkeville	8:44 A. M.	6:40 P. M.
Arrive at Richmond	12:45 P. M.	9:30 P. M.

### Change of Schedule.

SOUTH CAROLINA RAILROAD COMPANY, COLUMBIA, S. C., June 28, 1872.

Change of Schedule to go into effect on and after Sunday, 29th instant:

MAIL AND PASSENGER TRAIN.		
Leave Columbia at	Arrive at Charleston at	Arrive at Charleston at
5:38 am	1:10 pm	1:10 pm
6:00 am	1:30 pm	1:30 pm
1:45 pm	8:15 pm	8:15 pm

### Greenville and Columbia Railroad.

REGULAR PASSENGER TRAINS run daily, Sundays excepted, connecting with Night Trains on South Carolina Railroads up and down; with Trains going North and South on Charlotte, Columbia and Augusta Railroads.

UP.		
Leave Columbia at	Arrive at Greenville at	Leave Greenville at
7:15 a.m.	7:05 a.m.	7:05 a.m.
10:40 a.m.	10:40 a.m.	10:40 a.m.
2:00 p.m.	2:00 p.m.	2:00 p.m.
8:50 p.m.	8:50 p.m.	8:50 p.m.

DOWN.		
Leave Greenville at	Arrive at Columbia at	Leave Columbia at
7:30 a.m.	9:05 a.m.	9:05 a.m.
11:15 a.m.	11:15 a.m.	11:15 a.m.
2:30 p.m.	2:30 p.m.	2:30 p.m.
6:00 p.m.	6:00 p.m.	6:00 p.m.

### Summer Schedule S. & U. R. R.

DOWN TRAIN UP TRAIN			
Arrive	Leave	Arrive	Leave
Spartanburg	5:30	5:25	5:25
Batesville	6:00	6:00	4:53
Faceo	6:08	6:13	4:40
Jonesville	6:45	6:48	4:05
Unionville	7:20	7:50	3:05
Santee	8:25	8:25	2:30
Fish Dam	8:40	8:45	2:15
Shelton	9:15	9:20	1:55
Lyles Ford	9:40	9:45	1:12
Sirother	10:05	10:10	12:50
Alston	11:00	11:00	12:00

### Thrashing Machines.

JAN MILLS, Cotton Gins, Cotton Presses, Engines, Beating, Smut Machines, Portable Mills, Agricultural Implements and Machinery of all kinds, for sale at manufacturers' prices by **LOBICK & LOWRANCE**, June 25, Columbia, S. C.

### Columbia, S. C., Thursday, October 23.

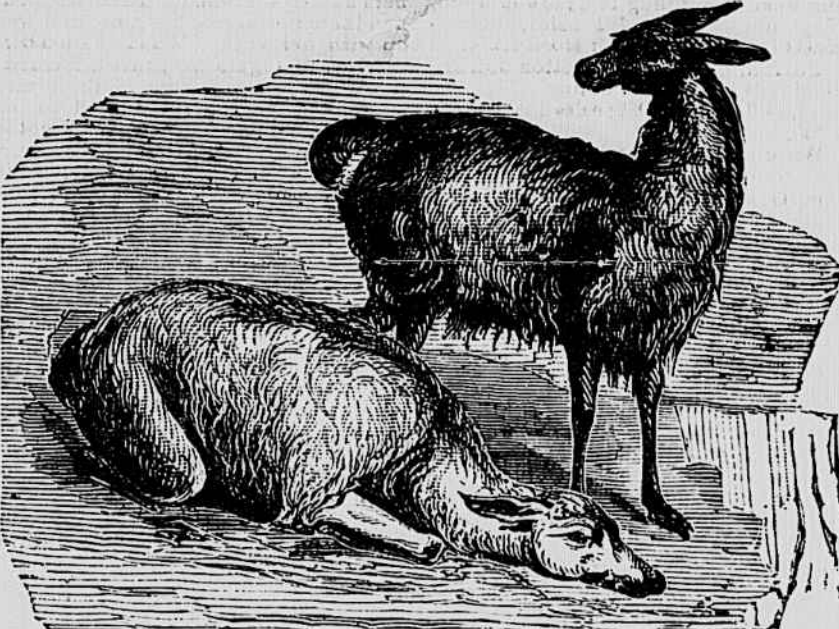
THREE GRAND PERFORMANCES—AT 10 A. M., 2 and 7 O'clock P. M.

## A Towering Giant Among its Fellows!

### THE GREAT 12-CENTRE-POLE TENT

AND

## \$100,000 CHALLENGE SHOW!



### GREAT EASTERN MENAGERIE, Museum, Aviary, Circus and Hippodrome, AND EGYPTIAN CARAVAN!

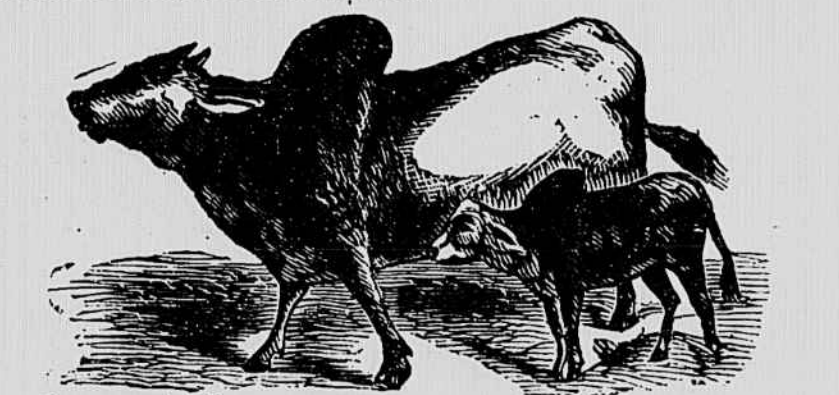
ITS augmentation the past winter makes it four times larger than last year, and then it was confessed the most magnificent exhibition of the kind ever attempted; and an immense Twelve Centre Pole Tent covering over four acres of ground, and measuring 168,000 yards of canvas, is required to exhibit its thirty-one dens of Living Wild Beasts, breathing Sea Monsters, Plumed Birds, Flesh-eating Reptiles, and the colossal

### DUAL CIRCUS EXHIBITION!

MAKING IT A

### Grand Combination More Than Equal to 12 Shows in One!

To transport this Colossal of Shows, 100 extra passenger coaches and four engines are brought into requisition, and the services of over 2,000 men and horses are necessary to the success of this unprecedented enterprise.

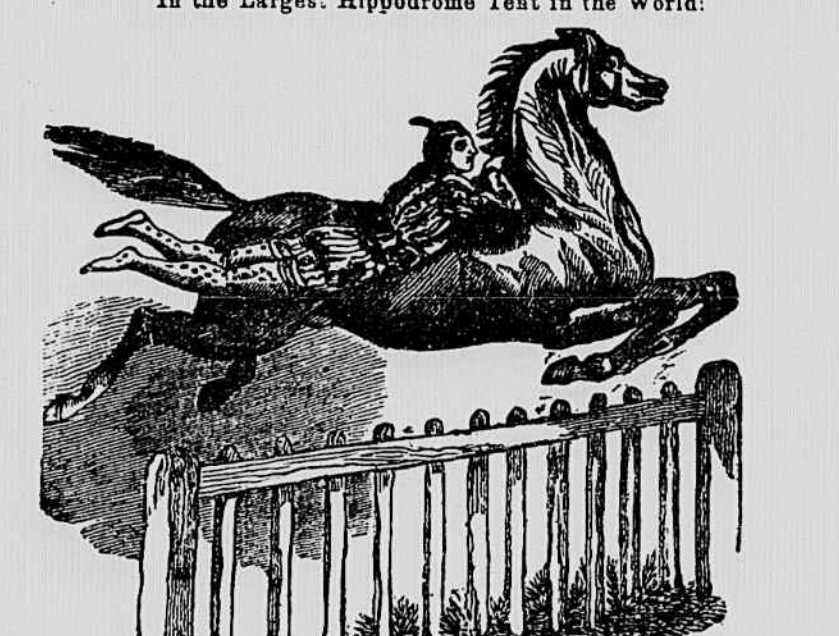


### A GRAND TRIPLE MENAGERIE,

In four separate Tents, combined with the COLOSSAL MUSEUM, AVIARY OF TROPICAL BIRDS and Caravan of Elephants, Camels, Dromedaries, Hks, Buffaloes, etc., etc.

### GRAND DOUBLE CIRCUS PERFORMANCE,

In the Largest Hippodrome Tent in the World!



### EVERY ACT DOUBLE,

In Two Rings at the Same Hour, Under one Grand Pavilion!

A Double Grand Entrance, two Studs of Ring Horses, Dual Corps of Equestriennes, Male Riders, Acrobats, Gymnasts, Clowns, etc.



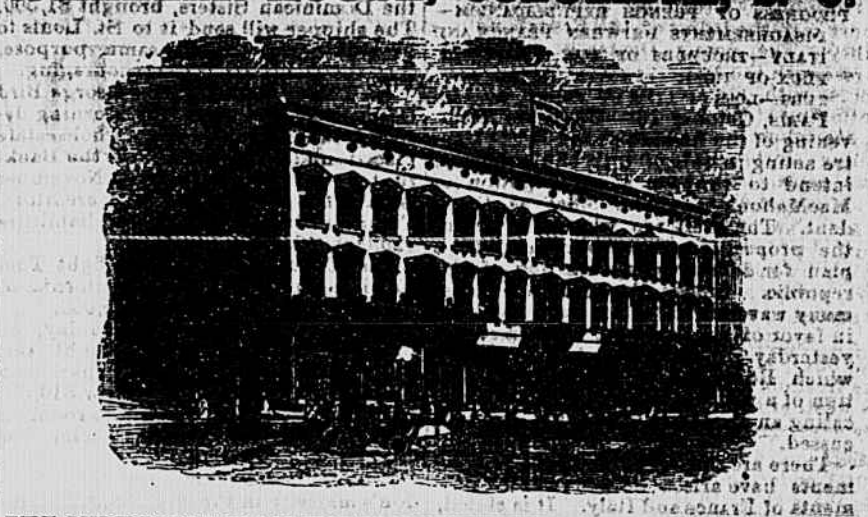
### PAGEANT and PROCESSION OVER TWO MILES LONG.

With a double Grand Entrance, two Studs of Ring Horses, Dual Corps of Equestriennes, Male Riders, Acrobats, Gymnasts, Clowns, etc.

Before each exhibition, a GRAND BALLOON ASCENSION will be given by a distinguished aeronaut, who will make a journey beyond the clouds.

Admission, 75 Cents; Children Under Ten Years, 50 Cents. Doors open at 10 A. M. and 7 P. M. Performance commences an hour afterward. W. W. DURAND, General Agent. Sumter, Wednesday, October 22; Willsboro, Friday, October 24, Sept 27 sth

### WHEELER HOUSE, COLUMBIA, S. C.

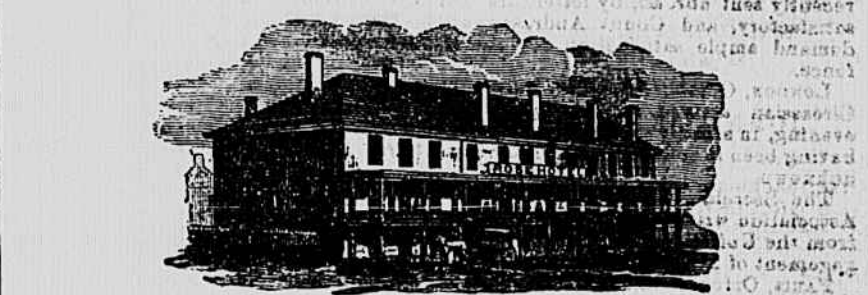


### THE ONLY FIRST CLASS HOTEL NOW IN THE CITY—PRICE \$4 A DAY

Corner Main and Plain Streets, T. M. FOLLOCK, Proprietor

### ROSE'S HOTEL, COLUMBIA, S. C.

Wm. E. ROSE, Proprietor.



### ANOTHER FIRST CLASS HOTEL IN THE CITY. FARE \$2.50 PER DAY,

(INCLUDING OMNIBUS FARE.)

SITUATED NEAR THE CAPITOL, AND IN THE CENTRE OF THE BUSINESS PART of the city, Rose's Omnibus will convey passengers to and from every Train. The Ladies Apartments are complete, with private entrance on Assembly street. The BILLIARD and BATH ROOMS are all new and superior to any in the city.

### Wheeler House—Prices Not Reduced!

THE PROPRIETOR OF THE WHEELER HOUSE would respectfully inform the traveling public, that, in order to maintain the character of his House as a First Class Hotel, he will continue his prices as heretofore, and guarantees to give that satisfaction which has secured to the House the reputation it now has.

### GREAT SOUTHERN FREIGHT AND PASSENGER LINE

VIA

### CHARLESTON, S. C.,

TO AND FROM

### BALTIMORE, PHILADELPHIA, NEW YORK, BOSTON,

AND ALL THE NEW ENGLAND MANUFACTURING CITIES.

Three Times a Week from New York—Tuesdays, Thursdays and Saturdays. 25 Elegant State Room Accommodations. Sea Voyage 10 to 12 Hours Shorter, "via Charleston." TOTAL CAPACITY, 40,000 BALES MONTHLY.

### The South Carolina Railroad Company,

AND connecting Roads West, in alliance with the fleet of thirteen first class Steamships to the above ports, invite attention to the quick time and regular despatch afforded to the business public in the Cotton States at the PORT OF CHARLESTON, offering facilities of rail and sea transportation for Freight and Passengers not excelled in excellence and capacity at any other port. The following splendid Ocean Steamers are regularly on the line:

TO NEW YORK.		
MANRATTAN	M. S. Woodhull, Commander.	
OHAMPION	B. W. Lockwood, Commander.	
CHARLESTON	James Berry, Commander.	
JAMES ADGER	T. J. Lockwood, Commander.	

TO PHILADELPHIA.		
IRON STEAMSHIP ASHLAND	Alex. Hunter, Commander.	
EQUATOR	Wm. A. Courtenay, Agent, Charleston, S. C.	

TO BALTIMORE.		
FALCON	Hainie, Commander.	
SEA GULL	Paul C. Trenholm, Agent, Charleston, S. C.	

TO BOSTON.		
STEAMSHIP MERCEDITA and FLAG.	James Adger & Co., Agents, Charleston, S. C.	

Fares guaranteed as low as those of competing lines. Marine insurance, one-half of ordinary rate.

### THROUGH BILLS OF LADING AND THROUGH TICKETS

Can be had at all the principal Railroad Offices in Georgia, Alabama, Tennessee and Mississippi.

### THE SOUTH CAROLINA RAILROAD, GEORGIA RAILROAD

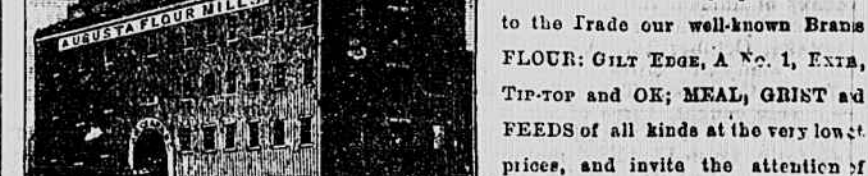
And their connecting lines, have largely increased their facilities for the rapid movement of Freight and Passengers between the Northern cities and the South and West. First Class Eating Saloon at Branchville. On the Georgia and South Carolina Railroads, first class Sleeping Cars.

Freight promptly transferred from steamer to day and night trains of the South Carolina Railroad. Close connection made with other roads, delivering freights at distant points with great promptness. The managers will use every exertion to satisfy their patrons that the line via Charleston cannot be surpassed in despatch and the safe delivery of goods.

For further information, apply to T. J. Griffin, Western Agent, Atlanta, Ga.; B. J. Hasell, General Agent, P. O. Box 4 979; Office 317 Broadway, N. Y.; S. B. Frazier, General Passenger and Ticket Agent, South Carolina Railroad; or J. M. Suttick, Superintendent Great Southern Freight and Passenger Line, Charleston, S. C.

### AUGUSTA FLOUR MILLS,

Augusta, Ga.



HAVING thoroughly repaired our MILL, we are now prepared to offer to the Trade our well-known BRAND FLOUR: GILT EDGE, A No. 1, Extra, TIP-TOP and OK; MEAL; CRIST and FEEDS of all kinds at the very lowest prices, and invite the attention of buyers?

JOHN M. CLARK & CO., Proprietors. Aug 28