



"TO THINE OWN SELF BE TRUE. AND IT MUST FOLLOW AS THE NIGHT THE DAY: THOU CANST NOT THEN BE FALSE TO ANY MAN."

By Steck, Shelor Hughs & Shelor.

WALHALLA, SOUTH CAROLINA, WEDNESDAY, OCT. 13, 1920.

New Series No. 761.—Volume LXXI.—No. 41.

ANNOUNCEMENT OF 10 to 33 1/3 CUT IN PRICES.

We have made a big reduction in the price of goods in our store, which includes the price on all new Seasonable Goods. We had planned for the biggest fall business we ever had. Our store is full of standard advertised goods, made by the leading firms in the United States at the price of unknown makes, which takes the risk out of buying. We have had and are having the biggest trade in the history of our business. You will always find a rush in our store. We are going to turn our immense stock of goods into money regardless of profit or loss to us.

Extra Special--We have over \$15,000.00 worth of Army Goods awarded to us on bids from the U. S. Government already received and in transit at a ridiculously low price.

C. W. & J. E. Bauknight,
WALHALLA, S. C.
IT PAYS TO BUY FOR CASH.

Wagons, Buggies, Harness and Accessories.

Barb Wire, Hog and Chicken Wire, Doors, Windows, Lime, Cement, Brick, Cedar Shingles, Metal Shingles, Composition Roofing.

FARM IMPLEMENTS. PAINTS and OILS.

—See the Above to go at Right Prices.—

R. K. NIMMONS,
SENECA, S. C.

Sale of Hosiery

Direct to the Public.

EAOH DAY

from Now Until Further Notice, from
9 to 4 O'clock.

THE PRICE

One-Half of What You Are Now Paying.
Sale at Our Mill.

HETRICK HOSIERY MILLS
Walhalla, S. C.

NOTICE.

Highest Market Price Paid for Cotton.
Also have ample warehouse facilities for storing cotton. See me if you want to either sell or store.

Office in Moss & Ansel's Store.

BAYLIS W. HARRISON,
Walhalla, S. C.

Sept. 27, 1920.—39-1f.

COTTON GINNING BY STATES.

Detailed Statement with Figures to Show Total 1919 Ginnings.

Washington, Oct. 11.—The following detailed statement has been issued from the Census Bureau, department of crop estimates, showing cotton ginned to Sept. 25th, State by State, with the total ginning figures for the years 1919, 1918 and 1917, with the estimate made by the department for the 1920 crop. The detailed statement is as follows:

State and Year.	Ginnings to Sept. 25.	Ginnings for Year.
Alabama—		
1920.....	84,033
1919.....	138,701	716,656
1918.....	259,676	789,265
1917.....	96,936	520,906
Estimated crop 1920—	742,000.	

Arizona—		
1920.....	5,622
1919.....	3,588	58,472
1918.....	1,204	54,216
1917.....	35	21,140
Estimated crop 1920—	126,000.	

Arkansas—		
1920.....	56,558
1919.....	63,550	867,177
1918.....	198,679	957,118
1917.....	47,065	953,587
Estimated crop 1920—	1,110,000.	

California—		
1920.....	6,808
1919.....	5,345	59,082
1918.....	4,571	71,479
1917.....	1,525	58,974
Estimated crop 1920—	70,000 (not including Lower California.)	

Florida—		
1920.....	3,124
1919.....	5,154	17,317
1917.....	6,658	34,951
1917.....	13,767	48,178
Estimated crop 1920—	25,000.	

Georgia—		
1920.....	276,411
1919.....	539,796	1,678,758
1918.....	626,527	2,117,860
1917.....	582,118	1,885,051
Estimated crop 1920—	1,582,000.	

Louisiana—		
1920.....	86,612
1919.....	52,032	302,035
1918.....	176,862	582,608
1917.....	153,822	629,719
Estimated crop 1920—	430,000.	

Mississippi—		
1920.....	93,997
1919.....	121,125	950,907
1918.....	289,906	1,193,122
1917.....	114,261	886,259
Estimated crop 1920—	867,000.	

Missouri—		
1920.....	239
1919.....	1,820	62,867
1918.....	4,484	59,797
1917.....	225	58,937
Estimated crop 1920—	80,000.	

North Carolina—		
1920.....	31,701
1919.....	80,782	857,253
1918.....	78,709	919,338
1917.....	27,827	656,656
Estimated crop 1920—	799,000.	

Oklahoma—		
1920.....	65,372
1919.....	82,953	1,002,178
1918.....	155,601	585,149
1917.....	47,962	955,342
Estimated crop 1920—	1,130,000.	

South Carolina—		
1920.....	171,112
1919.....	330,971	1,462,277
1918.....	351,924	1,581,726
1917.....	234,604	1,257,176
Estimated crop 1920—	1,265,000.	

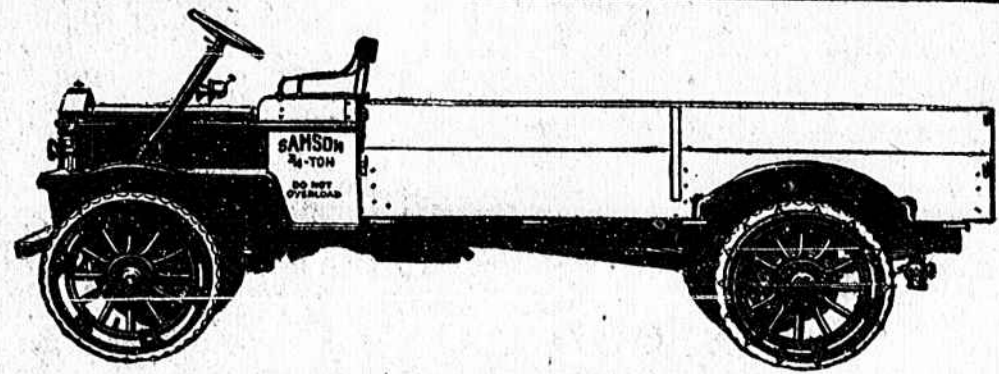
Tennessee—		
1920.....	820
1919.....	7,134	308,408
1918.....	45,185	317,962
1917.....	85	238,806
Estimated crop 1920—	305,000.	

Texas—		
1920.....	1,362,021
1919.....	401,998	2,960,335
1918.....	1,570,222	2,610,337
1917.....	1,191,525	3,041,726
Estimated crop 1920—	3,583,000.	

Crop Condition in Oconee.
The condition of the crop in Oconee is given as 76 per cent of normal on Aug. 25th and as 65 per cent on Sept. 25th, showing a net deterioration of 11 points during the 30-day period.

Ginning in Oconee.
A tabulation of the cotton ginning reports for the county of Oconee shows that there were 90 bales ginned in this county, from the crop of 1920, prior to Sept. 25th, as compared with 2,594 bales ginned in Oconee, of the crop of 1919, prior to the 25th of September, 1919.
John C. Sanders,
Oconee Statistician.

S. C. Ginning by Counties.		
County—	1920.	1919.
Abbeville.....	1,864	4,897
Aiken.....	11,595	16,004
Allendale.....	5,636	10,206
Anderson.....	2,894	13,422
Bamberg.....	6,993	12,222
Barnwell.....	9,369	15,124
Beaufort.....	333
Berkeley.....	1,113	1,605
Calhoun.....	7,975	12,028
Charleston.....	27	1,276
Cherokee.....	81	950
Chester.....	1,196	3,840
Chesterfield.....	3,849	7,012
Clarendon.....	8,852	14,593
Colleton.....	1,582	4,035
Darlington.....	3,355	10,324
Dillon.....	4,920	13,160



The even distribution of weight in the Samson Truck assures tire economy and fuel economy at all times.

SAMSON 3/4 TON TRUCK

We have just received our first shipments of

SAMSON TRUCKS,

Both in 1-4 and 3-4 ton capacity.

These Trucks are radically different from anything that has ever been offered in this country. They have 33 per cent more loading space than any other truck of the same capacity. When a Samson is loaded to capacity, 45 per cent of the load is on the front wheels. No other truck is so evenly balanced.

Also we have just received one car of Model M 12-25 Samson Tractors. These tractors are as easily handled as an automobile. If you are in any way interested in a Farm Tractor you should see this one. We are pulling a saw mill with a Samson Tractor on our farm one mile out on the Westminster-Walhalla road.

If you are interested in belt power you now have a chance to see what a REAL TRACTOR will do.

1-4 Ton Truck, \$1,185. 3-3 Ton Truck, \$865.
Model M Tractor, \$1,060. All F. O. B. Factory.

ARTHUR BROWN, WALHALLA.

JURORS FOR COMMON PLEAS

Court—First Week October 18 and Second Week Begins Oct. 25th.

Last Wednesday afternoon petit jurors for the two weeks of Common Pleas Court for Oconee were drawn. Judge Frank B. Gary, of Abbeville, will preside over this term of Court, which will embrace two full weeks if so much time be necessary for the transaction of the civil business that is on the Common Pleas docket. The first week of the October term of Common Pleas will open on next Monday, Oct. 18th. The names published below constitute the list of

First Week Jurors.

Ables, C. M., Seneca.	2,522	4,386
Adams, A. M., Seneca.	4,207	6,275
Adams, J. A., Westminster Rt. 5.	2,001	2,686
Alexander, W. T., Walhalla Rt. 1.	3,937	10,089
Barron, J. M., Seneca.	391	273
Brown, S. L., Seneca, R. F. D.	305	4,513
Burns, Thomas, Seneca R. F. D.	2,419	6,068
Busha, J. A., Westminster R.F.D.	5,273	5,273
Campbell, J. E., Seneca R. F. D.	2,905	4,046
Clark, N. W., Fair Play.	188	625
Clark, D. J., Seneca.	254	552
England, B. M., Westminster.	4,880	8,600
	338	1,665
	3,137	7,204
	5,662	12,988
	5,908	7,476
	857	3,859
	1,579	4,046
	9,316	21,132
	3,349	5,212
	90	2,594
	21,225	32,494
	23	1,269
	6,399	6,669
	3,297	5,954
	950	4,540
	7,782	13,294
	652	917
	4,106	5,659
	571	4,128

Totals for State ..171,451 330,971

Gallard, J. L., Newry.
Garrison, I. L., Walhalla, Rt. 2.
Gibson, G. M., Westminster R.F.D.
Graham, J. W., Seneca.
Harper, J. E., Seneca.
Honea, George, Westminster R.F.D.
Hubbard, Grover, Richland.
Hughes, Pat, Seneca Rt. 1.
Hughes, S. N., Richland.
Knox, S. H., Seneca.
Lawrence, T. S., Seneca.
Mauldin, B. D., Seneca.
Mearns, A. N., Westminster.
Morris, H. O., Seneca R. F. D.
Moss, Jas. M., Walhalla.
Murphree, W. M., Walhalla Rt. 3.
Nimmons, T. R., Seneca.
Orr, J. D., Mountain Rest.
Owens, C. R., West Union Rt. 1.
Sanders, R. M., Walhalla Rt. 1.
Shirley, F. H., Westminster.
Simpson, J. Olin, Seneca.
Simpson, Mason, Walhalla R.F.D.
Tollison, J. S., Seneca R. 1.

Second Week Jurors.
The following gentlemen were also drawn to serve as petit jurymen, to be called for the second week of the Common Pleas Court, which will open on Monday, the 25th of October:

Bowie, R. L., Seneca R. F. D.
Brock, J. A., Seneca.
Cater, J. H., Seneca R. F. D.
Collins, O. C., West Union Rt. 1.
Cowan, J. J. D., Walhalla Rt. 2.
Daly, B. A., Seneca.
Davis, T. R., Westminster.
Dickard, J. E., Walhalla Rt. 3.
Dillard, Ernest, Clemson College.
Ellison, C. H., Seneca.
Fricks, J. B., Madison.
Hammonds, M. L., Seneca Rt. 1.
Holley, T. W., Westminster R.F.D.
Hunt, B. E., Walhalla.
Johnson, C. E., Seneca R. F. D.
Jones, T. B., Seneca.
King, L. C., Mt. Rest Rt. 2.
Kibby, Richard, Seneca.
Lanford, E. H., West Union Rt. 1.
Lecroy, T. W., Walhalla Rt. 3.
Lyles, C. W., Madison Rt. 1.
Lynch, G. A., Seneca Rt. 1.
Maratt, K. W., Westminster.
Mearns, W. E., Westminster.
Miller, Oscar, Seneca Rt. 5.
Morgan, W. J., Westminster R.F.D.
McCarley, W. B., Westminster R. F. D.
Peay, J. R., West Union Rt. 1.
Phillips, J. S., Long Creek.
Phillips, L. V., Long Creek.
Quarles, S. R., West Union.
Reid, C. W., Walhalla.
Robinson, J. B., Seneca.
Rowland, J. N., Walhalla.
Smith, J. A., Westminster Rt. 4.
Stribling, C. S., Seneca.

WATCH THIS SPACE

Rally Week
Is Coming.