

A Practical Low Priced Ice Plant for the Small Town

New Center Freeze Process Solves the Ice Problem

DELOACH QUICK ICE MACHINE

Plants in Operation:

J. F. Wyman (2 plants) Estill, S. C.
 J. F. Wyman (1 plant) Estill, S. C.
 J. D. Glover Walterboro, S. C.
 G. N. Gurganus Williamston, N. C.
 W. B. Browning Ridgeville, S. C.
 Chero-Cola Bottling Co. Edgefield, S. C.
 Barnwell Ice Company Barnwell, S. C.
 E. E. Chandler Maxton, N. C.
 James H. Thompson North Wilkesboro, N. C.
 J. R. Parker Lenoir, S. C.
 Pinewood Ice and Produce Co. Pinewood, S. C.
 Clover Cotton Oil Co. Clover, S. C.
 Yorkville Cotton Oil Company York, S. C.
 W. D. Black Williston, S. C.
 H. C. Williams (1 plant) Brunson, S. C.
 H. C. Williams (2 plants) Brunson, S. C.
 O. T. Culp Fort Mill, S. C.
 J. L. King Bothune, S. C.
 P. K. Livingston Kitchings Mills, S. C.
 People's Market Kingstree, S. C.
 (H. A. Miller, Prop.)

Plants Sold, Under Construction, and Soon to be in Operation:

J. A. Doyle (1st order) Georgetown, S. C.
 J. A. Doyle (2d order) Andrews, S. C.
 Bamberg Cotton Oil Co. (1st order) Bamberg, S. C.
 Bamberg Cotton Oil Co. (2d order) Bamberg, S. C.
 R. M. Adams Lagrange, N. C.
 Preston Ott Branchville, S. C.
 H. A. Wasden Midville, Ga.
 Raeford Power and Mfg. Co. Raeford, N. C.
 J. A. Barro Lexington, S. C.
 W. G. Hays Sharon, S. C.

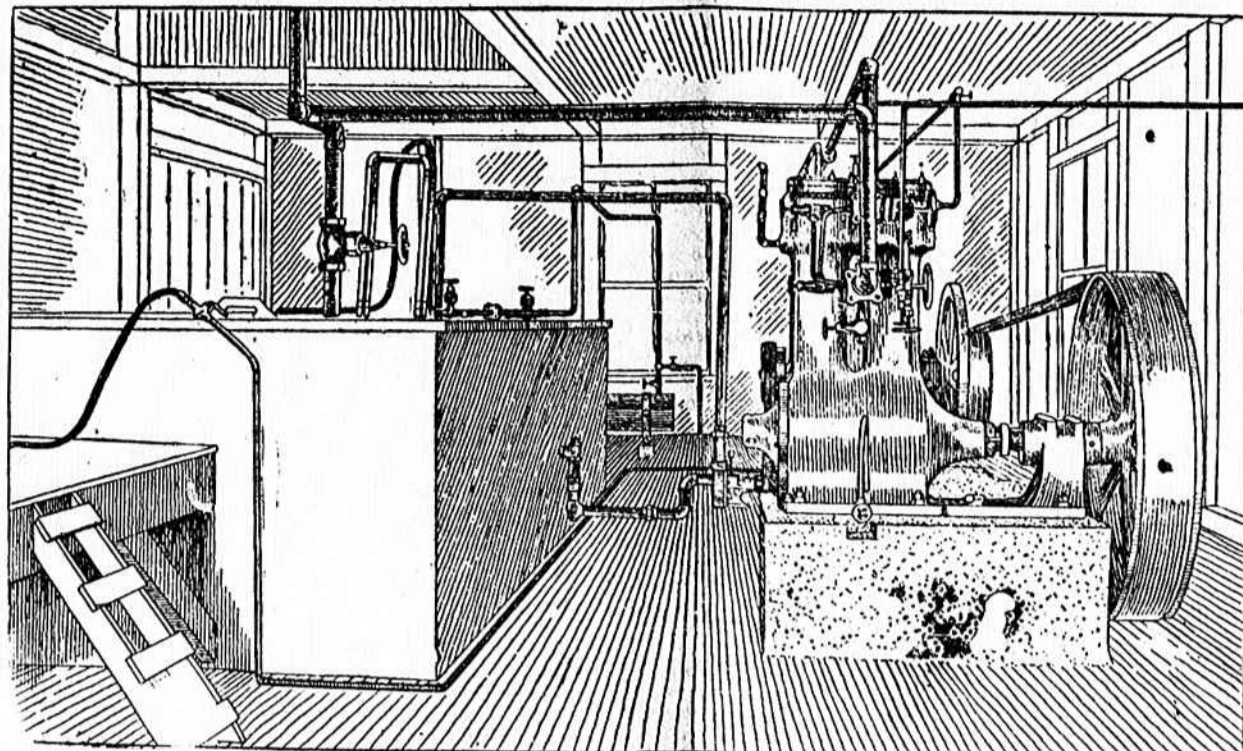
THE PEOPLE'S MARKET,
 Cold Storage Plant,
 Dealers in Beef, Pork, Mutton and Sausage,
 Dressed Poultry,
 Kingstree, S. C., June 4th, 1920.
 The DeLoach Quick Ice Machine Co.,
 Columbia, S. C.

The Refrigerating Plant purchased from you has been installed in a thorough and workman-like manner by your Engineer, and in such a way as to not deprive me of refrigeration at any time, which was a great convenience.
 The plant is performing beautifully and to my entire satisfaction, and is hereby accepted.
 Very truly yours,
 H. A. MILLER.

QUICK ICE MANUFACTURING COMPANY,
 J. D. Glover, Proprietor,
 Walterboro, S. C., May 8th, 1920.

The Bank of Columbia,
 Columbia, S. C.
 Gentlemen:—
 Replying to your inquiry of May 5th, we are pleased to advise that we have one of the Ice Plants sold to us by the DeLoach Quick Ice Machine Company, same having now been in operation for several months, and we find everything very satisfactory.
 We are manufacturing ice at about 15 cents per 100 pounds, and the plant is giving perfect satisfaction. We believe that the cost of manufacturing would be reduced some if the plant was run to its full capacity.
 Judging from the increased demand and the number of new customers that we are adding to our list each day, and information obtained from our patrons, we can say that the ice that we are manufacturing is very favorable to our customers.
 If there is any further information that we can give you concerning this plant and its efficiency, we will be pleased to hear from you further.
 Very truly yours,
 PEOPLE'S ICE PLANT,
 By J. D. Glover, Proprietor.

Makes Good Ice From Raw Water in Eight to Twelve Hours at a Total Production Cost of \$4.00 a Ton; 20c Per Hundred Pounds.



Photograph of Quick Ice Plant, Erected for J. W. Glover, Walterboro, S. C.

WITH the scientific application of our original patent, the CENTER FREEZE, we have placed ice making and refrigeration within the reach of a wide group of individuals and small consumers of ice to whom the old style ice making equipment was prohibitive on account of the high installation cost.

THE CENTER FREEZE PROCESS, AS CONCEIVED AND DEVELOPED BY US, REDUCED THE TIME REQUIRED TO MANUFACTURE ICE BY MORE THAN TWO-THIRDS, ENABLING US, BY THE USE OF LIGHTER AND MORE ECONOMICAL MACHINERY, TO PRODUCE ICE AT A COST FAR UNDER THE USUAL MANUFACTURING EXPENSE—AND THAT, TOO, WITHOUT THE ATTENTION OF AN EXPERT MECHANICAL MAN OR REFRIGERATING ENGINEER. ANY ONE WHO CAN OPERATE AN ENGINE OR AN ELECTRIC MOTOR CAN SUCCESSFULLY RUN ONE OF OUR PLANTS. INDIVIDUALS AND SMALL STOCK COMPANIES OPERATING OUR ICE PLANTS ARE UNANIMOUS IN PRAISE OF THEIR EFFICIENCY AND ECONOMY. OUR PLANTS ARE PARTICULARLY ADAPTABLE FOR USE BY FARMERS, DAIRYMEN, MERCHANTS, ICE CREAM MANUFACTURERS, MILLS, FACTORIES, INSTITUTIONS, BUTCHERS, FISH MARKETS, AND ALL LARGE INDIVIDUAL USERS OF ICE OR COLD STORAGE.

FEW LEGITIMATE BUSINESS ENTERPRISES OFFER SUCH AN ATTRACTIVE BUSINESS PROSPECT AS THE OPERATION OF OUR PLANTS IN SMALL TOWNS HERETOFORE UNSUPPLIED WITH ICE-MAKING EQUIPMENT. THE INITIAL INVESTMENT IS SMALL, THE OPERATING EXPENSE LOW, AND THE CASH PROFIT FROM OPERATION IMMEDIATE AND CERTAIN.

HAS MET NEED IN PRACTICAL WAY.

BECAUSE THE DELOACH QUICK ICE MACHINE HAS MET, IN A PRACTICAL WAY, THE NEED FOR A LOW-PRICED, ECONOMICAL ICE MANUFACTURING AND REFRIGERATING SYSTEM FOR SMALL TOWNS AND RURAL COMMUNITIES, IT HAS BEEN IMPOSSIBLE UNTIL NOW, FOR US TO KEEP UP WITH THE DEMAND. BUT WITH ENLARGED FACILITIES WE NOW FIND OURSELVES IN A POSITION TO MAKE IMMEDIATE DELIVERIES ON A LIMITED NUMBER OF PLANTS OF SIX TON DAILY CAPACITY. IN CONNECTION WITH THESE PLANTS WE CAN FURNISH FOR IMMEDIATE DELIVERY STANDARD MAKE OIL ENGINES, WHICH OUR EXPERIENCE PROVES TO BE THE MOST ECONOMICAL AND EFFICIENT MOTIVE POWER WHERE ELECTRIC CURRENT IS NOT AVAILABLE.

WE ARE GLAD TO REFER YOU TO THE MANY SATISFIED OWNERS OF OUR PLANTS, WHOSE NAMES AND ADDRESSES ARE GIVEN IN THIS ADVERTISEMENT, AND TO ANY BANK OR BANKER IN COLUMBIA IN REFERENCE TO OUR BUSINESS INTEGRITY.

If you are interested in an ice plant for immediate delivery, it will be wise to get in touch with us by wire or telephone. We have only a few plants available for immediate shipment.

CLOVER COTTON OIL AND GINNING CO.,
 Manufacturers of
 COTTON SEED PRODUCTS,
 Clover, S. C., June 9th, 1920.

The DeLoach Quick Ice Machine Co.,
 Columbia, S. C.

Gentlemen:—
 Referring to the Quick Ice Machine, purchased from you this year, we take pleasure in stating that our machine has met every claim you made for it. Our customers are pleased with the high quality of ice turned out. For communities requiring something like six tons of ice per day, we know of nothing superior to your machine for meeting such requirements.
 Very truly yours,

CLOVER COTTON OIL AND GIN CO.,
 J. E. Beaumgard, Sec. and Treas.

ESTILL ICE MANUFACTURING CO.,
 Pure Ice and Hard Ice.

Estill, S. C., May 6th, 1920.

The Bank of Columbia,
 Columbia, S. C.

Gentlemen:—
 We have your letter of the 5th instant asking our opinion of the DeLoach Quick Ice Machine. We wish to say that we own and have operated one of their plants, and we feel no hesitancy in recommending it as being practical, economical and satisfactory. We find that a large number of people of this community prefer the ice produced by this plant to the ice produced by the old style plants, and we have never heard a complaint about our ice.
 Yours very truly,

ESTILL ICE MFG. CO.,
 J. F. Wyman, Manager.

L. B. Tutten, Pres. H. C. Williams, Sec. & Treas.

L. B. TUTTEN GIN COMPANY,
 Brunson, S. C., October 7th, 1919.

The Quick Ice Machine Co.,
 Columbia, S. C.

Gentlemen:—
 In regard to the small Ice Plant that you sold us and erected four weeks ago, we wish to state that we are still making ice in eight to nine hours, and that everything is working nicely. With this hot spell on for October we have had a chance to test out our machine. While you only sold it to us for a four-ton plant, we must admit that we are pulling five to five and a half tons ice daily. Same is frozen good and hard.
 Several farmers in this community have arranged with us to furnish them with ice this fall and winter to cure their meat. And it would seem that the time is not far distant when each community will have cheap cold storage, enabling farmers to have fresh meat at all times, regardless of weather conditions. We have on two occasions run the temperature down to zero and closed down for the night. Next morning, starting up again, the temperature would be around eight to ten degrees. We then commence pulling our ice and refilling the cans. Some are frozen and ready to pull in eight to nine hours. We cannot say exactly what our cost is per ton, but am satisfied that it will not exceed \$2.00 per ton. We are satisfied that your method of freezing, cutting the time about thirty to forty hours, puts you in a class where there are no competitors.
 With all good wishes for the success of the enterprise, we are,

Yours very truly,
 L. B. TUTTEN GIN COMPANY,
 By H. C. Williams.

GET OUR CATALOG

OUR 30-PAGE ILLUSTRATED CATALOG DESCRIBES FULLY THE OPPORTUNITIES IN ICE MANUFACTURE AND COLD STORAGE. LET US MAIL YOU A COPY TO-DAY. FILL IN THIS COUPON:

DeLoach Quick Ice Machine Co., Inc.,
 Columbia, S. C.

Please send a copy of your Illustrated Catalog to
 Name
 Address
 FILL IN THIS COUPON AND MAIL TO-DAY.

State Distributors Wanted in Unoccupied Territory. Write for Our Proposition.

Corner Gervais
 and Pulaski Sts.

DeLoach Quick Ice Machine Co., Inc.,

COLUMBIA,
 So. Car.

♦ ♦ ♦ ♦ ♦
 COUNTY AGENTS'
 NOTES.
 ♦ ♦ ♦ ♦ ♦
 Club Members' Letter.

I wish to reproduce a recent letter from the new Secretary of Agriculture, Hon. E. T. Meredith, showing what value the head of the United States Department of Agriculture places upon Boys' and Girls' Club work:

The Letter.
 "I want to say just a few words to the farm boys and girls, and the older people need not bother to read it at all.
 "Now, you and I know that the boys' and girls' club work represents one of the most important lines of activity in the United States to-day. I believe it is important because it has such large possibilities. We men and women who are trying to improve farming and farm life will be out of the game when you boys and girls are just reaching the prime of life. You have the advantage of us because you are learning the principles of good agriculture and home-making while you are still young enough to learn to the best advantage and to apply in a practical way

the knowledge thus gained throughout your whole lives.
 "Even as boys and girls you are accomplishing more good than can be measured. The good that you will be able to do will increase as you grow older, and, when you become full-grown men and women, you can supply for the agricultural forces of this nation a leadership such as the world has never known before.
 "I congratulate the Boys' and Girls' Club members. And I would like to ask a favor of the boys and girls who are not members of the clubs. We are trying—the United States Department of Agriculture, the State agricultural colleges and a great many other people—to make the farms of this country more profitable and home life on the farm more pleasant. I wish the rest of you boys and girls would join with those who are already members of the clubs and help us in accomplishing this great service for our common country. It is a patriotic thing to do, and it is a service that cannot be rendered by anybody except you boys and girls.
 "The year 1920 should be the biggest year in the history of club work, and I am confident that it will be. The country is facing a difficult situation because so many men have left the farms to work in the cities.

The good work that the club boys and girls can do will help to overcome that handicap—and the club boys and girls will do that kind of work this year. It may hearten you to know that many of us here in the Department of Agriculture look upon the boys and girls' clubs much as Caesar must have looked upon the Tenth Legion or Napoleon upon the 'Old Guard.' The other forces may fall, but we know that we can rely on you.
 "I might not be willing to see you undertake such serious service if I did not know that, while you work hard, you play joyously together. I am sure that the boys and girls in the clubs have better times than those who are not in the clubs, and that is an additional compensation to you for the hard work you do in club work.
 E. T. Meredith,
 "Secretary of Agriculture."
 Club members may look forward to a day of pleasure and profit to be spent at Clemson after laying-by time. There will be two scholarships awarded to the corn club members winning first and second places. These scholarships are for the boys' corn club short course at Clemson next summer. Another prize to be offered will be one-half ton of fertilizer, by the Anderson Phosphate and

Oil Co. of Anderson, to corn club winners.
 Geo. R. Briggs,
 County Agent.

The Courier, \$1 per year. Pay in advance

Glover & Holland

RENOVATING SHOP,
 108 West Main Street,
 WALHALLA, S. C.

We are prepared to make you a SUMMER SUIT at a reduced rate. Be sure and call in and see our special Reduction Sale Price on
 BLUE SERGE,
 FANCY CASHMERE,
 FANCY WORSTED SILK,
 all of Superior Grade, Special Workmanship and Style.
 If you want to dress well, see us. Also, if you want good work in Repairing, Cleaning and Pressing, you get it at our shop.
 GLC'ER & HOLLAND,
 WALHALLA, S. C.

 The Willard was first,
 The Willard is better built,
 The Willard lives longer,
 The Willard is used most.
 THEREFORE, You want and must have
The Willard Battery
 in Your Car.

We have a complete line on hand. The name Willard is a guarantee of perfection in the battery world. Our personal guarantee goes with every battery.

Hughs Garage,
 Main Street, Walhalla, S. C.
 "Satisfied Customers" is Our Motto.