

The Clemson Agricultural College

South Carolina's School of Engineering and Agriculture

1,544 ACRES OF LAND. VALUE OF PLANT \$1,300,000. OVER 100 TEACHERS, OFFICERS AND ASSISTANTS. ENROLLMENT 950. EVERY COUNTY IN SOUTH CAROLINA REPRESENTED. THIRTEEN DEGREE COURSES. FIVE SHORT COURSES. TWENTY-SIX DEPARTMENTS OF INSTRUCTION. NEW AND MODERN BUILDINGS, EQUIPMENT AND SANITATION

NEXT SESSION OPENS WEDNESDAY, SEPTEMBER 20, 1916

PRESERVE THIS SHEET FOR REFERENCE

Location and Environment

The College is located in Oconee County at the foot of the Blue Ridge Mountains, on the homestead of John C. Calhoun, and later of his son-in-law, Thos. G. Clemson. The College is over 800 feet above the sea level, and the climate is healthful and invigorating. Temptations to dissipate or to spend money foolishly are reduced to a minimum.

The students are under military government and every effort is made to train up young men who will reflect credit on the College and on the State.

Religious Influences

The College contributes to the salary of four resident ministers, who conduct divine services and do pastoral work among the cadets in barracks. There is a flourishing Sunday School and Y. M. C. A. with two salaried Secretaries. A \$75,000 Y. M. C. A. building was completed January, 1916.

Requirements of Admission

No student will be admitted who is not at least 16 years old at the time of entrance.

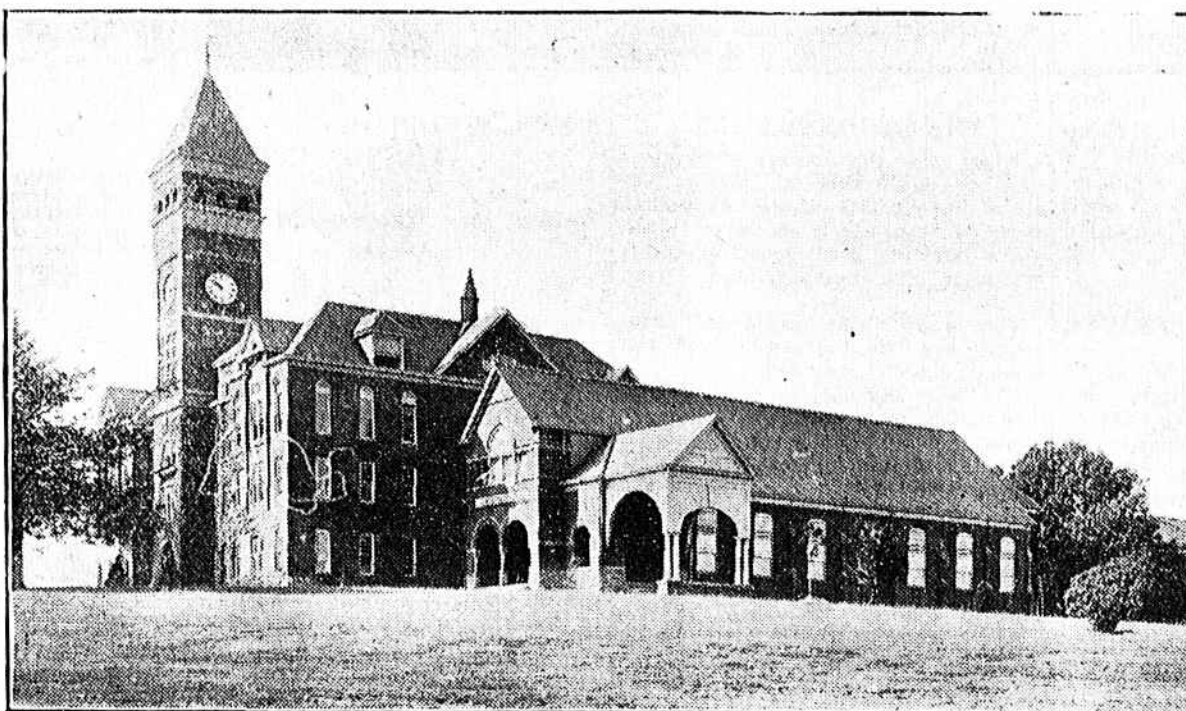
An honorable discharge from the last school or college attended is required.

No student will be admitted who is not reasonably healthy and free from contagious diseases, including tuberculosis.

Applicants for the Freshman Class must stand examinations, either in their counties on July 14th, or at the College in September, unless they can fill out a prescribed certificate, furnished by the College.

A preparatory department is no longer maintained at the College.

Scholastic requirements are given in detail in the College Catalog.



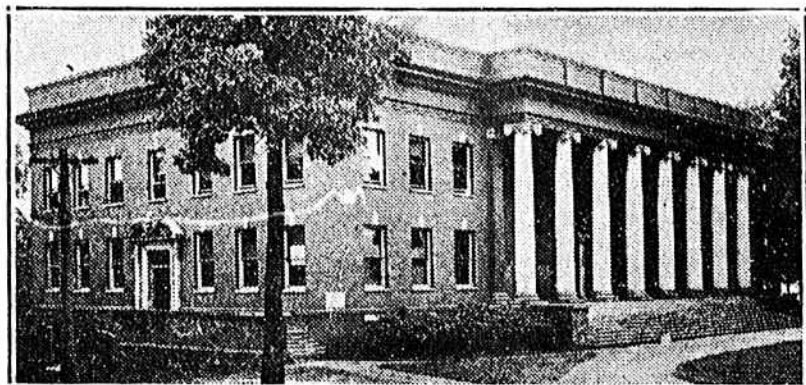
ADMINISTRATION BUILDING.

Scholarships and Examinations

The College maintains 168 four-year scholarships in the Agricultural and Textile Courses, and 51 in the One-Year Agricultural Course (October 10th to June 8th.) Each scholarship is worth \$100 and free tuition.

Scholarship and entrance examinations are held at the county court houses at 9 a. m., July 14th. Write for full information in regard to the scholarships open to your county next session, and the laws governing their award. **It is worth your while to try for one of these scholarships.**

Those who are not seeking to enter on scholarships are advised to stand examinations on July 14th, rather than wait until they come to College in the fall. Credit will be given for any examinations passed at the county seat.



AGRICULTURAL HALL.

COURSES OF STUDY

Clemson College offers thirteen four-year courses leading to the degree of Bachelor of Science (B. S.), and seven short courses during the regular session and the summer session.

FOUR-YEAR DEGREE COURSES

- | | |
|-------------|--------------------|
| Agriculture | Agronomy |
| | Botany |
| | Chemistry |
| | Animal Industry |
| | Entomology |
| | Veterinary Science |
| | Horticulture |
| | Soils |

- | |
|-----------------------------------|
| Chemistry |
| Mechanical-Electrical Engineering |
| Civil Engineering |
| Textile Engineering |
| Architectural Engineering |

SHORT COURSES (Regular Session)

- | |
|--------------------------------|
| One-year course in Agriculture |
| Two-year course in Textile |

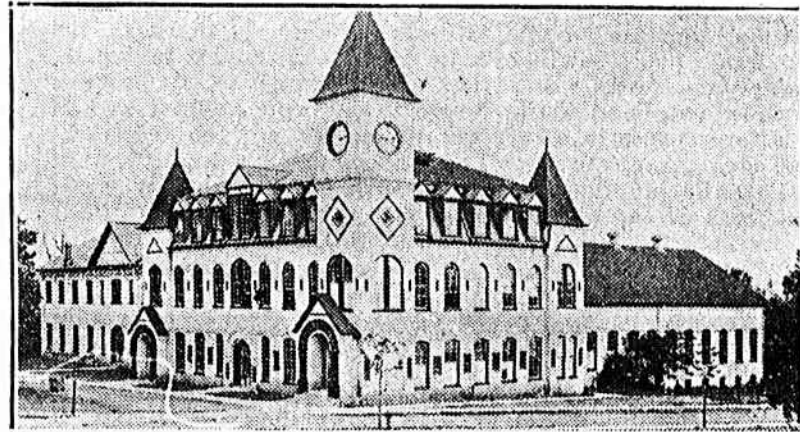
COST

The cost for any of the thirteen regular four-year courses or the Two-Year Textile Course is \$149.10 per session. This amount covers uniforms, board, room, heat, light, water, laundry and all fees, except tuition. Tuition is \$40.00 additional to those who are able to pay.

The cost of the One-Year Agricultural Course is \$122.05. This amount covers the same items as are listed above.

The cost of the Four-Weeks' Summer Course for Farmers and the Four-Weeks' Summer Course in Cotton Grading is \$19.00. This amount covers all fees, board, room, light and water. No uniforms are required.

Do not delay in making application to enter; you may be crowded out.



ENGINEERING DEPARTMENT.

Summer Short Courses in Agriculture

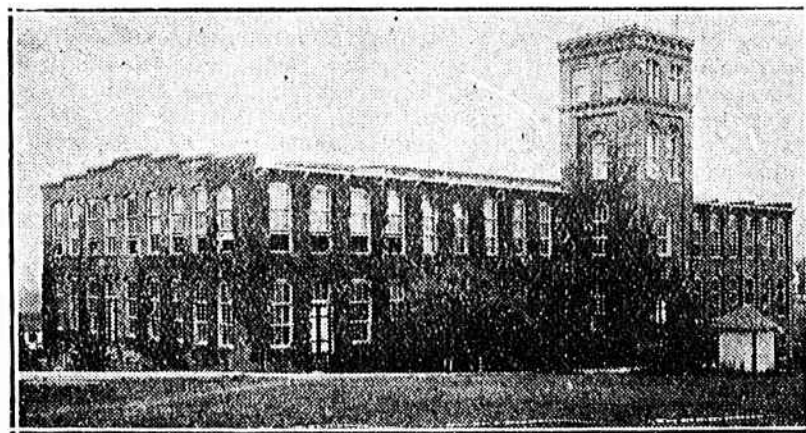
July 31st-August 26th, 1916.

Courses in Dairying, Animal Industry, Poultry Raising, Horticulture, Field Crops, Cotton Grading.

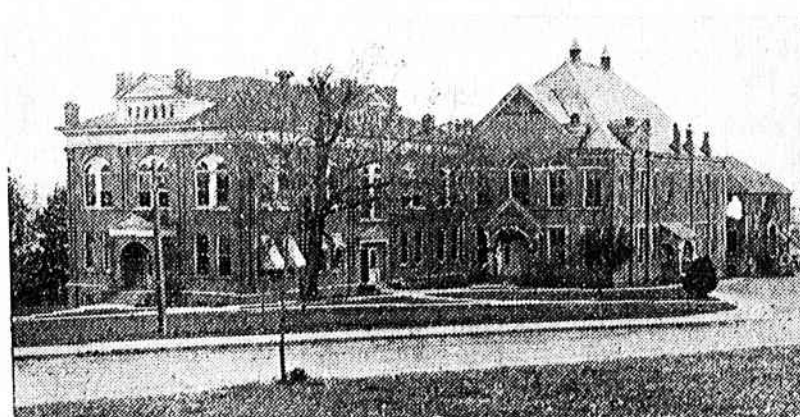
For Farmers, Teachers, Corn Club Boys and any one interested in Agriculture. The courses are arranged so that one may stay one week or four weeks.

Special courses for ministers in rural communities. (August 10th-August 18th, 1916.)

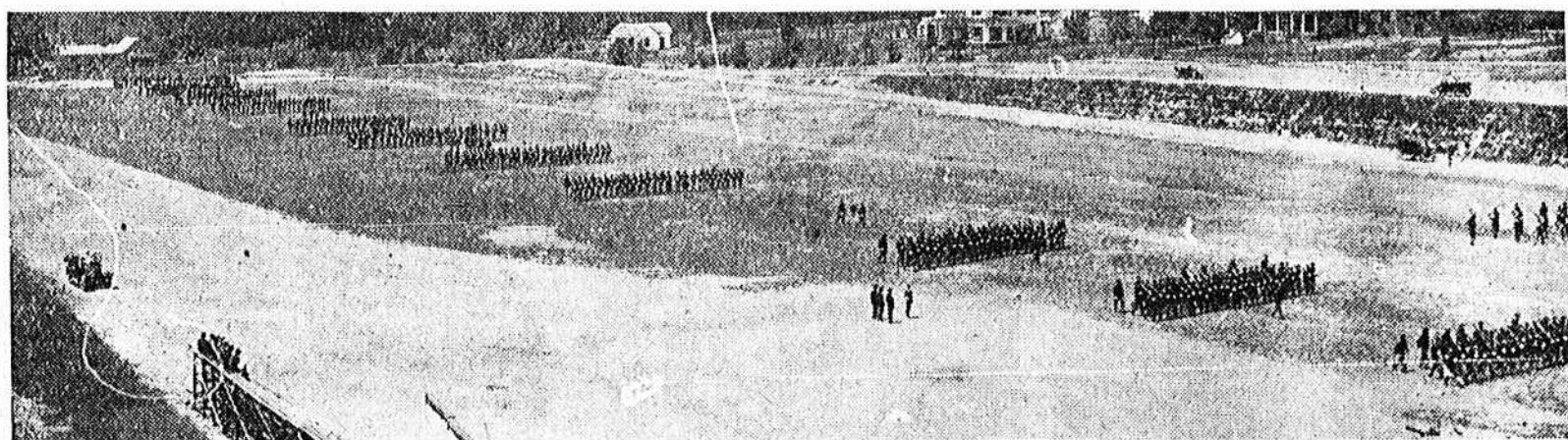
Send for leaflets giving details of the courses.



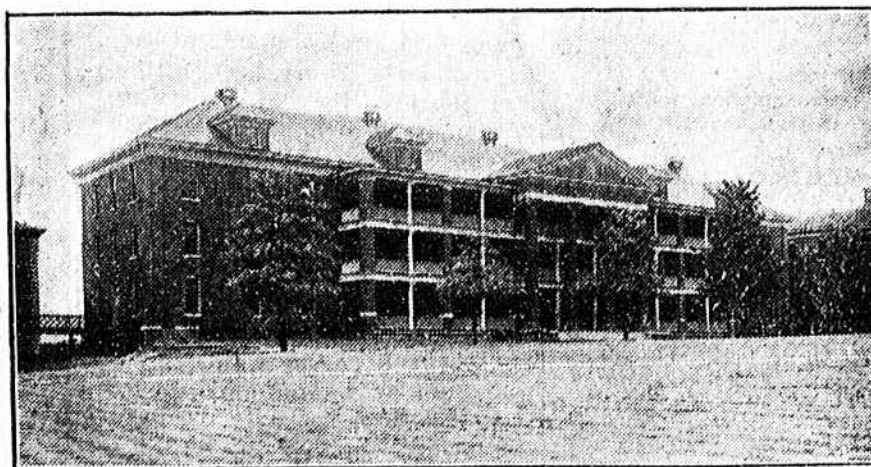
TEXTILE DEPARTMENT.



CHEMICAL LABORATORIES.



DRESS PARADE ON RIGGS FIELD.



ONE OF THE THREE CADET BARRACKS.

For Catalogue, Etc., Write at Once to **W. M. RIGGS, President, Clemson College, S. C.**

(PRESERVE THIS PAGE FOR REFERENCE—NO OTHER NOTICE WILL APPEAR.)