



Corn yielding seventy bushels to the acre, Richland county, South Carolina, on the Southern Railway.

CO-OPERATION OF PEOPLE DESIRED BY SOUTHERN

Will Freely Give Assistance in Work for Advancement of Its Territory—Information Gladly Received.

The Southern Railway System invites the co-operation of all the people along its line in work for the advancement of its territory. It will freely give every assistance possible, and will be glad to have individuals and business organizations call upon it for aid in solving the development problems which come up, and contribute information which will help build up the communities of the Southeast.

Communications relating to locations or development work along the Southern Railway, Mobile and Ohio Railroad, Georgia, Southern and Florida Railway and Virginia and Southwestern Railway should be addressed to M. V. Richards, Land and Industrial Agent, Washington, D. C.

For locations or for information on matters regarding the country along the Queen and Crescent Route, address T. O. Plunkett, Agricultural and Industrial Agent, Chattanooga, Tenn.

RESOURCES OF SOUTHEAST GIVEN WIDE PUBLICITY

Exhibits at Fairs, Advertisements in Newspapers, and Circulation of Attractive Literature All Boost the Southern Territory.

The Southern Railway has long devoted much attention to fair and exposition exhibits, showing the resources and products of the Southeastern States. This year's exhibit work is almost entirely within its own territory. At state and other large fairs and exposition its is making comprehensive exhibits, largely agricultural, which are mostly of an educational character, and which show what the people of the Southeast and of special communities may do. A large exhibit will be made in November at New York City.

In the line of publicity for calling attention to the opportunities of the Southeast, liberal amounts are appropriated. The Southern Field, giving information about all the System's territory, is widely and regularly circulated. Booklets descriptive of the different states, publications relating to the various lines of farming, pamphlets giving general or special information or lists of lands or business opportunities are published for the benefit of homeseekers and manufacturers.

In advertising opportunities in the Southeast agricultural, trade and general publications in the North are used and special advertising is done in Europe.

SOUTHERN RY.'S EXHIBITS

Interesting Display of Southern Farm Products at Land and Irrigation Congress.

New York.—At the American Land and Irrigation exposition, which recently opened at Madison Square Garden, there are displays of farm and orchard products from every portion of the United States and from Canada, but none excels the exhibit from the Southern states made by the Southern Railway system, which has expended several thousand dollars in collecting material for exhibit purposes from all parts of the territory served by its lines.

The Southern railway's booth is sixty feet long and the arrangements of the exhibit is most tasteful and attractive. There are exhibits of cotton, tobacco, the grains, grasses and forage, crops, sugar cane, and all kinds of garden truck and an unusually fine fruit display. The walls are covered by a large map of the South, sheaves of grain and grasses, a score of large colored photographs of typical Southern farm, field and orchard views. There are a half dozen tables of the Southern apples, which will convince all who see them that the Southern apple-growing districts are surpassed by none. Special literature has been prepared for circulation at the exposition telling of the Southeastern states and especially of their farmlands and products.

Each day an illustrated lecture on the Southeast is delivered by M. A. Hays of the Land and Industrial Department of the Southern Railway. For this lecture 150 new colored slides have been made. The lecture covers the industries, the agricultural resources and developments, the scenic attractions, the resort centers of the Southeastern states, gives characteristics of Southern life and tells about the wide variety of opportunities found in this section.

SOUTHERN RY. ACTIVE IN AGRICULTURAL WORK

Co-operates With State and Federal Authorities and Has its Own Horticultural, Live Stock and Dairy Agents.

Today the greatest attention is paid to the development of the agricultural resources. This development must be largely through the efforts of the people already on the farms and resident in the states of this section. The homeseekers from the North and from Europe will aid by their work and their practical experience, but it is through better farm education and better farming and the improvement of farm conditions that the best and widest development will result.

To the efforts of the United States and State department of Agriculture, the college of agriculture and the experiment stations, the Southern Railway is giving the best co-operation it can. Through President Finley and through the Land and Industrial Department it is helping to circulate the bulletins and other publications of the Agricultural Departments which are of special value to the Southern farmer. A few years ago when it was decided by the United States Department of Agriculture to operate model farms in different parts of the country the Southern secured the location of many of these farms in its territory and the farms so located have been of great value. In improved farm methods in many communities. To the United States farm demonstration work in the South the same co-operation has been given, and today the Southern's own agricultural agents are working in co-operation with the agents of the farm demonstration bureau. A few months before his death the Land and Industrial Department arranged with the late Dr. S. A. Knapp for a series of a dozen addresses in the South in which he discussed, in the most comprehensive manner ever undertaken, the special needs and opportunities of the Southeastern farmer. These addresses brought about greatly increased interest in farm improvements and more profitable farming throughout the territory.

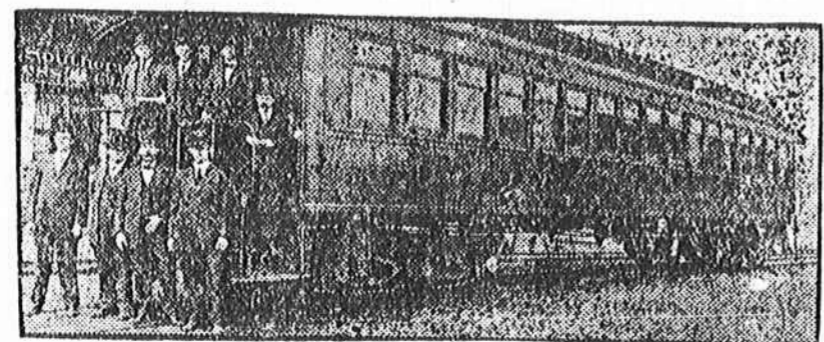
The company is in constant co-operation with the various state departments of agriculture, enlisting their help for the farmers of particular districts, making use of their investigations and securing their suggestions in the introduction of new crops or the development of special lines of agriculture in various communities; and, wherever possible, aiding these departments to make their work more efficient.

Special agricultural and horticultural agents are maintained by the Southern Railway to study the agricultural possibilities, to do direct work with farmers in giving instructions, where desired, regarding improved methods of farming and crop diversification and working for new lines of farm development. Co-operation is given fruit growers in the packing of fruit for shipment and in marketing it.

The development of the live stock industry is given special attention. President Finley has personally given much time to the circulation of literature calling attention to the loss to the Southeast from the cattle tick in the infested districts and to the practical work of eliminating the tick. A dairy agent, under the Land and Industrial Department, is at work to develop the dairy interests, and his work is doing much for this industry. A live stock agent, under the Freight Traffic Department, assists the farmer in his shipments, in developing markets for his stock and in other ways of advancing this industry.

The Southern Railway System is co-operating with the state agricultural authorities in running institute and other special trains. A dozen trains have been run in a single year. The work of these trains is carefully followed up.

From time to time pamphlets, leaflets and circular letters are printed for the benefit of the Southeastern farmer.



Southern Railway Cotton Culture Department.

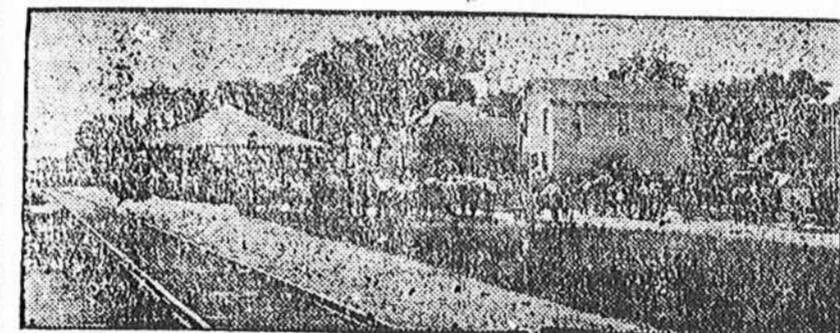
EFFECTIVE ORGANIZATION FOR DEVELOPMENT WORK

How the Land and Industrial Department of the Southern Railway is Conducted.

As an agency for the solicitation of men and capital for factories and for other industries and for immigration into the Southeast and for general promotion and development work, agricultural and industrial, within the territory of the various lines of the Southern Railway System the industrial department is organized.

The Land and Industrial Department, with jurisdiction extending over the lines of the Southern Railway, the Mobile and Ohio Railroad, the Georgia, Southern and Florida Railway, and the Virginia and Southwestern Railway, has direct charge of matters pertaining to general development. At the head of it is the Land and Industrial Agent, with headquarters at Washington and with a substantial corps of assistants and large offices located there. Along the lines of the roads are district offices at St. Louis, Mobile, Macon, Bristol, Columbus, Miss.; Ashville and Columbia. The agents in charge of these offices give their assistance to all efforts to promote, in any direction, the growth of the territory adjacent to the railroad lines, find locations for industries or help in their organization, aid homeseekers or colonizers in securing the lands they wish, work with the farmers and others in solving the problems of markets or crops which come up, gather information about the opportunities or facts which will advertise their districts and in every possible way extend their co-operation and that of the railroad to the people of their territory in development efforts. The work of these agents, as that of the Washington office, has to do with both the educational and other efforts with the people of the territory and in the bringing in of new people and new capital.

From the Washington and St. Louis offices industrial and migration agents travel throughout the North



Bringing watermelons to Southern Railway Depot, Clayton, N. C.

in advertising the Southern's territory and in soliciting farm settlers and manufacturers to locate along its lines. An office is also maintained for this work at Harrisburg, Pa., and for several years a European agency has been established with headquarters in London. The agents of the company include specialists in timber, minerals and clays, in industrial locations and in other lines.

For the Queen and Crescent Route a similar line of work is carried on by the Agricultural and Industrial Agent, located at Chattanooga, Tenn.

In the early days of the Southern Railway System it was believed proper that, while the needs of the territory in the way of immigration and of the development of the farm resources were not to be neglected, special effort should be made to call attention to the immense natural resources and advantages for industries of various kinds. The reports from the communities along the lines represented in the Land and Industrial Department show that in the decade from 1900 to 1910, \$400,000,000 were invested in industries. A good proportion of this sum represents the work of the industrial department.

At Dresden there is in the course of construction what is said to be the largest radiator in the world. This radiator is intended for the motor of an airship of 300-horse-power, and is made entirely of aluminum.

STILTS USED IN HOP FIELDS.

Mounted Upon These, a Man Can Do Large Amount of Work.

In the English hop fields thousands of laborers are employed in making the crop. Stringing the hop poles for the vines to climb upon is one of the most interesting features of the work, and makes the fields look like giant spider's webs. The strings are at the top of the poles some 15 feet from the ground, and in the past have generally been put on by men standing on the top of large steps and considerable time was used up in moving the platform from place to place. To avoid this trouble and to save time the English farmers in Kent put their men on stilts, which have rests and overshoes, into which the feet can be securely strapped 12 feet from the ground. Mounted upon these stilts a man can do six times the work done by the ordinary method.

The principal use of hops is in making beer. For a thousand years or more hops have been added to beer, in former times to prevent its spoiling and to give it its characteristic flavor. Germany and England had hop gardens in the eighth century and the growing of hops has increased with the growth of the brewing industry.

In the United States the culture of hops was introduced in 1625 in New Netherlands and was some years later begun in Virginia. At first Massachusetts, Vermont and Maine were the chief hop States, but the industry has been slowly moving westward although New York has for many years maintained its lead in production.

Son Forsakes Faith of Father.

Gladstone Dowle has forsaken the faith of his father, founder of Zion City, and is now a student in Western Theological Seminary, preparing to take orders in the Episcopal church, and to enter the orthodox ministry, says a dispatch from Chicago.

Dowle has been enrolled as a student in the seminary for three weeks and efforts were made to keep the fact secret. The young man is a graduate from the University of Chicago, and for two years was a student in Harvard University. For the last two or three years he has been practicing law in Michigan.

During the life of John Alexander Dowle the son, with his father, was a great traveler. It was during his journeying in different parts of the world that he gained experience as a speaker, as he was frequently called on to preach to his father's followers in the foreign lands he visited.

A specific for pain—Dr. Thomas' Eucletic Oil, strongest, cheapest liniment ever devised. A household remedy in America for 25 years.

What Ails You?

Do you feel weak, tired, despondent, have frequent headaches, coated tongue, bitter or bad taste in morning, "heart-burn," belching of gas, acid risings in throat after eating, stomach gnaw or burn, foul breath, dizzy spells, poor or variable appetite, nausea at times and kindred symptoms?

If you have any considerable number of the above symptoms you are suffering from biliousness, torpid liver with indigestion, or dyspepsia. Dr. Pierce's Golden Medical Discovery is made up of the most valuable medicinal principles known to medical science for the permanent cure of such abnormal conditions. It is a most efficient liver invigorator, stomach tonic, bowel regulator and nerve strengthener.

The "Golden Medical Discovery" is not a patent medicine or secret nostrum, a full list of its ingredients being printed on its bottle-wrapper and attested under oath. A glance at these will show that it contains no alcohol, or harmful habit-forming drugs. It is a fluid extract made with pure, triple-refined glycerine, of proper strength, from the roots of native American medicinal forest plants. World's Dispensary Medical Association, Props., Buffalo, N. Y.



Blessing in Disguise.

(Philadelphia Record.)

Perhaps the boll weevil is a blessing in disguise. The South has been too prone to put all its eggs in the one basket of cotton. The boll weevil has led to a diversification of industry and to the raising of more profitable crops. At the Chicago Land Show Louisiana will present evidence that cotton growers who have gone into other crops are making \$2 where they made only \$1 from cotton. They are raising big crops of corn, potatoes and onions, and they are going in for stock raising and dairying. The boll weevil has done terrible destruction in Louisiana. It has reduced the cotton crop from 1,100,000 bales in five years to 260,000 bales last year. But the farmers are making more money than ever.

Itch relieved in 30 minutes by Woolford's Sanitary Lotion. Never falls. Sold by J. W. Bell, druggist.

Wanted Some One With Experience.

(Montreal Star.)

A little boy had swallowed a half-penny. His mother was greatly distressed. He was precious to her before, but at least a half-penny more valuable now—a sort of incipient copper mine.

"Some one run for the doctor," cried the distressed mother.

"No, mother," replied the boy, "send for the minister, for I've heard you say that if anybody can get money out of anybody he can."

Foley's Kidney Pills

What They Will Do for You

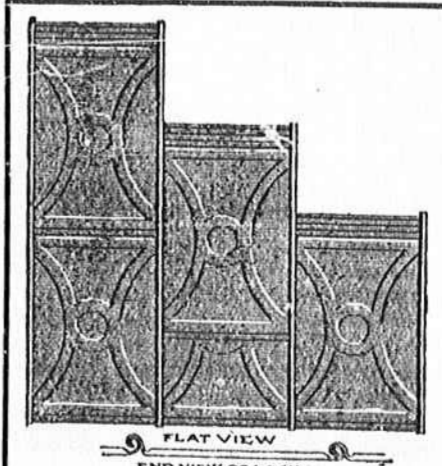
They will cure your backache, strengthen your kidneys, correct urinary irregularities, build up the worn out tissues, and eliminate the excess uric acid that causes rheumatism. Prevent Bright's Disease and Diabetes, and restore health and strength. Refuse substitutes. J. W. BELL, WALHALLA.

WANTED—Second hand bags and burlap. Write for prices. RICHMOND BAG COMPANY, Richmond, Virginia. 52

NOTICE OF FINAL SETTLEMENT AND DISCHARGE.

Notice is hereby given that the undersigned will make application to D. A. SMITH, Judge of Probate for Oconee County, in the State of South Carolina, at his office at Walhalla Court House, on Thursday, January 18, 1912, at 11 o'clock in the forenoon, or as soon thereafter as said application can be heard, for leave to make final settlement of the Estate of C. V. Reid, deceased, and obtain final discharge as Administrator of said Estate. CLAUDE W. REID, Administrator. 50-1

December 13, 1911.



We want to sell you Metal Shingles that never leak. With paint occasionally they will last a life time. Insurance less; no danger about fire. Our Catalogue will give you some fine testimonials from some of our customers. If you will write us same will be sent promptly. We make tin shingles, galvanized; also barn roofing, galvanized, 2 to 8 feet long, with the Burriss lock. Our goods do not require close sheeting—about same as wood shingles. This is a home enterprise, and we want your patronage.

Jno. T. Burriss & Son. Manufacturers, ANDERSON, S. C.

NOTICE TO DEBTORS AND CREDITORS.

All persons indebted to the Estate of C. V. REID, deceased, are hereby notified to make payment to the undersigned, and all persons having claims against said estate will present the same, duly attested, within the time prescribed by law or be barred.

CLAUDE W. REID, Administrator. Walhalla, S. C. December 13, 1911. 50-1

NOTICE OF ANNUAL MEETING OF BOARD OF COUNTY COMMISSIONERS.

The annual meeting of the Board of County Commissioners will be held in office on Friday, January 5, 1912.

All persons holding claims against the county must present same on or before Thursday, January 4, 1912, or they will be held over for one month.

This is the Annual Meeting and all demands not presented will be barred. N. PHILLIPS, County Supervisor.

James Seaborn, Clerk of Board. December 13, 1911. 50-1

NOTICE TO DEBTORS AND CREDITORS.

All persons indebted to the Estate of Robert Pettigrew, deceased, are hereby notified to make payment to the undersigned, and all persons having claims against said estate will present the same duly attested within the time prescribed by law or be barred. AARON PETTIGREW, Administrator. Seneca, S. C. December 13, 1911. 50-1

NOTICE TO DEBTORS AND CREDITORS.

All persons indebted to the Estate of J. C. VonLehe, deceased, are hereby notified to make payment to the undersigned, and all persons having claims against said estate will present the same duly attested within the time prescribed by law or be barred. WILHELMINA VONLEHE IVESTER, Executrix.

December 1, 1911. 49-52

NOTICE OF FINAL SETTLEMENT AND DISCHARGE.

Notice is hereby given that the undersigned will make application to D. A. SMITH, Judge of Probate for Oconee County, in the State of South Carolina, at his office at Walhalla Court House, on Monday, the 1st day of January, 1912, at 11 o'clock in the forenoon, or as soon thereafter as said application can be heard, for leave to make final settlement of the estate of J. C. VonLehe, deceased, and obtain final discharge as Executrix of said estate. WILHELMINA VONLEHE IVESTER, Executrix. 49-52

December 1, 1911. 49-52

For Sale at Bargain!

170 acres; 40 acres in fine River Bottom, on Tugaloo River, one and a half miles below Jenkins' Ferry. Reason for selling—change of work.

JAMES T. PORTER,

ROUTE No. 1, WESTMINSTER, S. C.

BURRIS METAL ROOFING

We want to sell you Metal Shingles that never leak. With paint occasionally they will last a life time. Insurance less; no danger about fire. Our Catalogue will give you some fine testimonials from

some of our customers. If you will write us same will be sent promptly. We make tin shingles, galvanized; also barn roofing, galvanized, 2 to 8 feet long, with the Burriss lock. Our goods do not require close sheeting—about same as wood shingles. This is a home enterprise, and we want your patronage.

J. C. Garrison, Agent, WALHALLA, S. C.

A TERRIBLE CRIME RECORD.

Have Been 86,934 Murders in the Last Ten Years.

(New York World.)

"It is not too much to say that the administration of criminal law in this country is a disgrace to our civilization."—President Taft.

Murders in the United States in the last ten years, 86,934, or a number equivalent to the total population of Springfield, Mass.; executions, 1,149—about 1 in 75 murders suffering the death penalty, divided thus:

Murders.	Executions.
1901—7,852	118
1902—8,834	144
1903—8,976	123
1904—8,482	116
1905—8,698	118
1906—9,350	123
1907—8,712	104
1908—8,952	92
1909—8,103	107
1910—8,975	104

Murders in New York last year, 185; convictions, 45; in the last ten years, 1,161; convictions, 382. Murders in Chicago last year, 202; convictions, 16; 1 execution. In Alabama in two years, 630 murder cases tried; 27 executions.

The Set of the Soul.

One ship drives east, another drives west,
With the self-same winds that blow;
'Tis the set of the sails
And not the gales
Which tell us the way they go.

Like the winds of the sea are the waves of fate
As we voyage along through life;
'Tis the set of the soul
That decides its goal
And not the calm or the strife.
—Ella Wheeler Wilcox.

Any skin itching is a temper-tester. The more you scratch the worse it itches. Doan's Ointment cures piles, eczema—any skin itching. At all drug stores.