

The DAIRY



IMPORTANCE OF MILK HOUSE

Difficult to Properly Care for Dairy Products in Summer Without Suitable Building.

During the hot weather it is almost impossible to care for dairy products on the farm without a suitable milk house. O. E. Reed of the Kansas Agricultural college offers the following:

Milk must be produced under sanitary conditions, and to do this the milk house should be either separate from the dairy barn or arranged in such a way that odors from the barn do not get to it.

A 10 by 12-foot milk house is a good size for the average farm. It should be built with a cement floor and have a drain at the center to carry away the waste. The equipment should consist of a refrigerating tank, 30 by 36 inches, inside measure. This will accommodate four milk cans. There should also be a cooler, aerator, wash and separator.

A windmill on the side nearest the refrigerating tank will pump cold water from the well into one corner of



A Model Dairy House Where Cleanliness is Paramount.

the tank. The water circulates around the cans and flows out at one side through an overflow pipe. This overflow pipe leads into a watering trough and the water is used for watering the stock instead of being wasted.

ARE YOUR COWS EFFICIENT?

Milk Scales and Babcock Tester Essential in Conducting Successful Dairy—Discard Boarders.

Putting the efficiency test to cows with the milk scales and the Babcock tester is one of the essentials of conducting a successful dairy. When feed is high in price a farmer cannot afford to have boarders in his dairy barn who eat up more in feed than their milk yield is worth. The Babcock test will show these delinquent cows in their true light, and the milk scales will put the clincher on the argument. Testing cows will give some farmers a big surprise. Sometime the cow that looks like the poorest creature in the lot is the best butterfat producer.

Cow testing associations among dairymen afford the most economical use of the Babcock tester and the scales.

DAIRY NOTES

Regularity in feeding pays.

The more the study, the greater the success in dairying.

The difference is in the cow, rather than the feed or milker or the churn.

The farm separator is too good a stepmother for the calf to get along without.

The more a man appreciates the maternity of the dairy cow the better dairyman he is.

Immediately after milking, strain the milk from the pail through three thicknesses of cheese cloth.

Some cows not only do not make a profit but are kept at a loss, as they do not give enough milk to pay for their feed.

It is not hard for a dairy farmer to sleep well on cold winter nights when he has a silo full of corn and a barn full of hay.

Grain and feed marketed through the butter mold and the cream can will generally bring top prices, no matter how the market may be for your grain and feed.

Orchard Information

WHITEWASH FOR THE TREES

Excellent Protection Afforded to Bark From Sunburn and Borers—Keeps Rabbits Away.

Whitewash is an excellent protection to the bark from both sunburn and borers. It is particularly valuable for young trees, as after trees reach a good size the branches generally become sufficiently large and the foliage sufficiently thick to shade the bark and prevent the injury that the hot sun would otherwise do.

The best time to apply the whitewash is in the early spring, or before the sun has become too hot and yet at a time when the danger of heavy rains washing off the lime is passed. It is not well to delay too long or the sunburn may occur in clear weather between rains.

There are dozens of whitewash recipes, all with merit, some more durable than others, and a durable whitewash is generally to be desired. For fruit trees a whitewash can be made by the addition of tallow, which is durable and also a protection against rabbits. Such a wash can be made with 30 pounds of lime, 4 pounds of tallow and 5 pounds of salt. The salt is dissolved in the water used in slaking the lime and the tallow added to the hot mixture, which is thinned to the desired consistency before using.

Spilled fat or grease of any kind can be substituted for the tallow and the amount can be increased if desired. If there is danger of attracting animals by the salt, it can be left out.

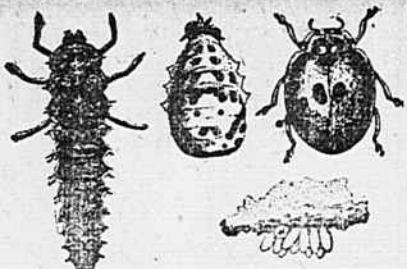
FRIENDS OF PLANT GROWERS

"Lady-Bugs" Feed Upon Plant-Lice, Scale Insects and Other Pests—Entitled to Protection.

(By W. E. BRITTON.)

The beetles commonly known as lady beetles, "lady birds," "lady-bugs" or plant-house beetles, are among the very best friends of the farmer or plant grower, because they feed in both larval and adult stages upon plant-lice, scale-insects, and the small larvae and eggs of other and larger noxious insects. Dr. S. A. Forbes examined the stomach contents of 39 specimens, and found that one-fourth of their food was composed of plant-lice; though they eat some vegetable food, such as pollen and spores of fungi, a greater portion of their food consisted of insects.

Though many persons are more or less familiar with lady-bugs, some are not acquainted with their habits or life histories, and do not, therefore,



The "Lady-Bug" Serves as an Effective Check on the Apple Aphid and Many Other Injurious Insects.

recognize them as friends. Thus many of these helpful little insects are destroyed, when they should be carefully protected.

One of the most conspicuous examples in history of controlling a pest by means of lady-beetles occurred in California some twenty-five years ago. An Australian insect known as the fluted or cottony cushion scale appeared in California on orange trees and spread so rapidly over the state that the extensive orange growing industry was threatened. By request, Mr. Albert Koebele was appointed agent of the United States to attend the Melbourne exposition, and while in Australia paid special attention to searching for the insect enemies of the fluted scale. A lady beetle was found feeding upon the scale and specimens were collected, and five separate lots (altogether about 500 specimens) were brought from Australia to California and placed upon the scale-infested trees. The lady-beetles multiplied and their progeny were soon transported to each orange growing section. In a few years the cottony cushion scale had been brought under complete control by the Australian lady-beetle; it has never since done much damage on the Pacific coast, and the orange industry still flourishes.

In a less striking manner and on a smaller scale our native lady-beetles are continually demonstrating their ability to clean up shrubs, trees and even orchards which were severely attacked by plant lice. There are about 250 different kinds of lady-beetles in this country.

Oil From Grape Seed.

A soap manufacturer in Argentina has been securing for his use oil from grape seed; thus far only in an experimental way. But he hopes to open a plant in 1915 with a capacity of 600,000 pounds grape seed oil a year, enlarging this as occasion warrants. He estimates that the inferior grade adapted to the manufacture of soap would cost a shade less than four cents a pound, while a refined article suitable for table use can be put on the market at 5.8 cents.

MANY TROUBLES DUE TO AN INACTIVE LIVER

Many of the troubles of life such as headache, indigestion, constipation and lack of energy are due to inactive livers.

GRIGSBY'S LIV-VER-LAX is a natural, vegetable remedy that will get the liver right and make these troubles disappear. It has none of the dangers or disagreeable effects of calomel.

Get a 50c or \$1 bottle of this splendid remedy from your druggist today. Every bottle bears the likeness of L. K. Grigsby, who guarantees it through.

Land for Sale

Life is too short to go on renting land, when you can buy a small farm for almost the rent money.

I have land in small lots around Johnston, and near Batesburg, Meeting Street, Celestia, Rocky Creek or Fruit Hill, Ropers and near Edgefield, and lots and stores in the town of Edgefield.

TERMS EASY

Arthur S. Tompkins

Edgefield, S. C.

FIRE INSURANCE

Go to see

Harling & Byrd

Before insuring elsewhere. We represent the best old line companies

Harling & Byrd

At the Farmers Bank, Edgefield

THE BAILEY-LEBBY CO.

Baileco
RUBBER ROOFING
CHARLESTON, S.C.

For Weakness and Loss of Appetite
The Old Standard general strengthening tonic, GROVE'S TASTELESS CHILL TONIC, drives out Malaria and builds up the system. A true tonic and nerve Appetizer. For adults and children. 50c.

Notice of Final Discharge.

To All Whom These Presents May Concern:

Whereas, S. J. Watson has made application unto this Court for Final Discharge as Guardian in re the Person & Estate of Emma B. Bouknight, who is now twenty-one years of age, on this the 26th day of May, 1915.

These Are Therefore, to cite any and all kindred, creditors, or parties interested, to show cause before me at my office at Edgefield Court House, South Carolina, on the 29th day of June, 1915 at 11 o'clock a. m., why said order of

Discharge should not be granted. You are further notified that the said S. J. Watson will make a final settlement at said time and place.
W. T. KINNAIRD,
Probate Judge, E. C. S. C.
May 26-4t.



GEO. F. MIMS

OPTOMETRIST

Eyes examined and glasses fitted only when necessary. Optical work of all kinds.

EDGEFIELD, S. C.

A. H. Corley,
Surgeon Dentist
Appointments at Trenton
On Wednesdays.

DR. J. S. BYRD,
Dental Surgeon
OFFICE OVER POSTOFFICE.
Residence Phone 17-R. Office 3.

Cures Old Sores... Remedies Won't Cure.
The worst cases, no matter of how long standing are cured by the wonderful, old reliable Dr. Porter's Antiseptic Healing Oil. It relieves Pain and Heals at the same time. 25c, 50c, \$1.00

GRANT'S NEW DISCOVERY
Will Surely Stop That Cough.

A New Model Typewriter



Yes, the crowning typewriter triumph is here!

It is just out—and comes years before experts expected it! For makers have striven a life-time to attain this ideal machine. And Oliver has won again, as we scored when we gave the world its first visible writing.

There is truly no other typewriter on earth like this 'new Oliver "9." Think of touch so light that the tread of a kitten will run the keys!

CAUTION! The new-day advances that come alone on this machine are all controlled by Oliver. Even our own previous models—famous in their day—never had the Optional Duplex Shift. It put the whole control of 84 letters and characters in the little fingers of the right and left hands. And it lets you write them all with only 28 keys, the least to operate of any standard typewriter. Thus writers of all other machines can immediately run the Oliver Number "9" with more speed and greater ease.

WARNING! This brilliant new Oliver comes at the old-time price. It costs no more than lesser makes—now out-of-date when compared with this discovery. For while the Oliver's splendid new features are costly—we have equalized the added expense to us by simplifying construction. Resolve right now to see this great achievement before you spend a dollar for any typewriter. If you are using some other make you will want to see how much more this one does. If you are using an Oliver, it naturally follows that you want the finest model.

17 Cents a Day! Remember this brand-new Oliver "9" is the greatest value ever given in a typewriter. It has all our previous special inventions—visible writing, automatic spacer, 6 1-2-ounce touch—plus the Optional Duplex Shift. Selective Color Attachment and all these other new-day features.

Yet we have decided to sell it to everyone everywhere on our famous payment plan—17 cents a day! Now every user can easily afford to have the world's crack visible writer, with the famous PRINTYPE, that writes like print, included FREE if desired.

TO-DAY—Write for Full Details and be among the first to know about this marvel of writing machines. See why typists, employers, and individuals everywhere are flocking to the Oliver. Just mail a postal at once. No obligation. It's a pleasure for us to tell you about it.

The Oliver Typewriter Co., Oliver Typewriter Bldg., Chicago, Illinois

You can rent the Oliver Typewriter three (3) months for \$4.00



A Pee Gee Finish For Every Purpose

Partial List of
Pee Gee
Guaranteed Finishes

- Pee Gee Flatcoat for Interior Walls and Ceilings
- Pee Gee China Enamel for Interior Woodwork
- Pee Gee Specification Varnishes
- Pee Gee Floor Wax
- Pee Gee Penetrating Dystain
- Pee Gee Porch Paint
- Pee Gee Semi-Paste Roof and Barn Paint
- Pee Gee Creo-Stain for Roofs
- Pee Gee Adamant Floor Paint
- Pee Gee Wagon and Implement Paint
- Pee Gee Portlandite for Concrete
- Pee Gee Blue Ribbon Family Paint
- Pee Gee Screen Enamel

If you are intending to build, repaint or redecorate, you should investigate the merits of Pee Gee Finishes. Remember the cost of labor is the same whether you use poor paints and varnishes or the Pee Gee kind. You want your buildings, inside and outside, to look attractive. You want to avoid the expense and trouble of frequent refinishing. Specify Pee Gee Finishes—the kind that has stood the test for almost a half a century.

MASTIC PAINT

"The Kind That Lasts"

COVERS more surface, lasts longer, looks better and is more economical than Keg Lead and Oil, hand mixed paint or ordinary ready mixed paint. MASTIC PAINT is made of pure White

Lead, re-inforced with Zinc Oxide in the correct proportions, and pure Linseed Oil. It does not scale and keeps its color for years. The formula appears on every can.

FREE Ask us for beautifully illustrated booklet, "Homes and How to Paint Them." Also for color cards, booklets of any Pee Gee Finish you may desire, or write for them to PEESLEE-GAULBERT CO., Incorporated, Louisville, Kentucky.

STEWART & KERNAGHAN
EDGEFIELD, SOUTH CAROLINA