

NEW IN LINE OF TOAST

EXCELLENT DISHES MEANT TO BE SERVED WITH VEGETABLES.

For Preparation of Celery the Outside Stalks Should Be Used—Anchovy Toast Delicious—When Made With Cheese.

Celery Toast—For this the outside stalks of celery can be used. Cut them into inch lengths, put them over the fire in enough hot water to cover them, and stew until the celery is tender. Remove from the water and add to a cup of this an equal quantity of milk, thicken with a heaping tablespoonful each of butter and flour, stir until smooth and thick, return the celery dice to this, salt and pepper to taste, and pour over dipped and buttered toast or over fried bread.

Anchovy Toast—Make your toast; after trimming off the crust butter lightly and spread sparingly with anchovy paste. Cook together a tablespoonful of butter and one of flour, pour upon them a cupful of milk, stir until it is thick and smooth and put into it two hard boiled eggs, chopped coarsely. When the eggs are hot through, pepper to taste—the anchovy will probably supply enough salt—and pour the egg sauce on the anchovy spread toast.

This is more a relish than a main dish, but if you choose to make more sauce and double the quantity of egg used you can have a good dish for Sunday night supper or for a family or even a company lunch.

Cheese Toast, I—Slice bread thin and butter lightly. Lay between two thicknesses of it a thin slice of American dairy cheese; heat a little butter in a frying pan, put the cheese sandwiches in this, and brown delicately, taking long enough about it to have the cheese melted on the inside. Sprinkle with salt before serving.

Cheese Toast, II—Heat half a cupful of shaved cheese in a saucepan, and when it is melted add to it a cupful of milk; stir until milk and cheese are well blended. Beat an egg light, pour some of the hot cheese and egg upon it, and return to the saucepan, cook one minute, season with salt and red pepper and paprika, and pour upon buttered toast in a hot dish.

Stuffed Eggs.

Boil 3 eggs very hard, shell and cut in halves lengthwise. Take out yolks and mash them fine, mix with 1½ tablespoons olive oil, 1 small teaspoon of mustard, add pepper and salt and enough vinegar to thin sufficiently. Cut a little parsley very fine and mix in dressing, then fill cavities with dressing. Take two toothpicks and run through egg slantwise so they cross each other in center. They can be removed by the one who is to partake of the stuffed eggs. These can be varied by using 2 sardines very fine and adding to mixture before stuffing the egg.

Boiled Rice.

First wash the rice in cold water. Then place rice in a medium sized stewpan with the water two inches above the rice. This quantity of water must remain the same during the boiling. As soon as the water boils the heat must be lowered. Boil slowly for half an hour. The stewpan cover must be kept on the rice and not lifted during the boiling. That is the secret of Chinese success in rice boiling. It must not be stirred. It will then come out snowy white and every grain will be whole.

Graham Cake.

Three eggs, beaten with one cup of sugar, four tablespoons of hot water, one heaping cup of flour, sifted, with one heaping teaspoon of baking powder, and lastly add two teaspoons of anise seed. Bake in a large shallow tin. When done take from oven and let it cool a little. Turn out and cut into inch-thick slices. Cut each slice into two pieces. Return to tin and put into oven and brown on both cut sides.

Spice Cake.

Here is my recipe for spice cake that I always use unless I make the famous apple sauce cake: One and one-half cups of sugar, one cup of molasses, one-half cup of butter, one and one-half cups of sour milk, two and one-half teaspoons of saleratus, spice to taste, one cup of raisins, three cups of flour, three eggs beaten in last. This makes two good sized loaves.—Boston Globe.

Mother Eve's Pudding.

Take six ounces each of sliced apple, grated bread, chopped suet and washed currants and mix together in a bowl with a quarter of the rind of one lemon grated. Beat two eggs stiffly and add to the other ingredients. Boil in a buttered mold and serve with white sauce sweetened and flavored with vanilla.

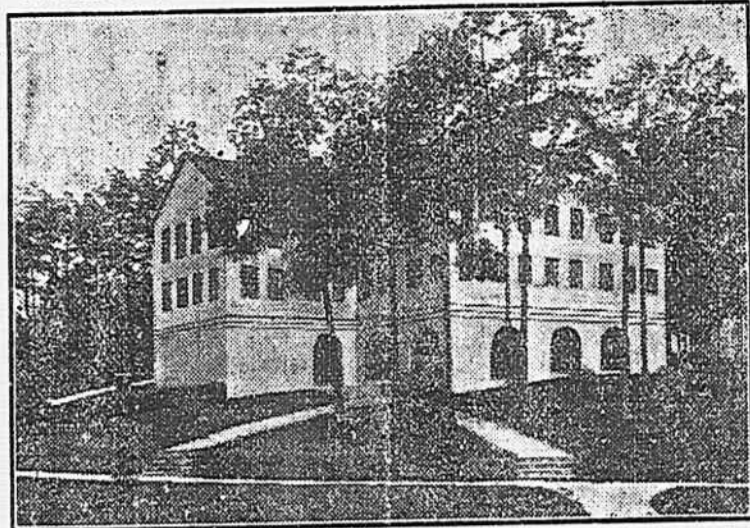
Rhubarb Puffs.

Cream one cupful of sugar and two tablespoonfuls of butter, and two well-beaten eggs, one-fourth cupful of milk, one teaspoonful of baking powder, and flour to make a thick batter; then stir in one cupful of finely chopped rhubarb; half fill well-buttered cups and steam for half an hour. Serve with pudding sauce.

To Stop a Curtain.

If your curtain rolls up too violently and winds itself over and over the roller, put a screw-eye in the wood stick at the bottom, and then, if you happen to release the curtain suddenly, it will not wind over the roller.

IMPORTANCE OF CHILD WELFARE WORK TO BE TAUGHT AT NATIONAL CONSERVATION EXPOSITION



A NOTED woman, Mrs. Julia C. Lathrop, Chief of the Children's Bureau of the Department of Labor of the United States Government, is deeply interested in the Child Welfare exhibit at the coming National Conservation Exposition that will be held in Knoxville, Tenn., from September 1 to November 1 of the present year. Miss Lathrop, an associate and co-worker for many years of the noted Miss Jane Addams, of Hull House, Chicago, is a member of the National Advisory Board of the Conservation Exposition, is giving considerable of her time and attention to the exhibit for the exposition. In late years the question of how best to conserve the lives, health and interests of children has grown to be a most important one. The Federal Government has recognized its importance by establishing the Children's Bureau. Many State Governments have bureaus of a similar character. The Child Welfare exhibit at the National Conservation Exposition will be new; it will be one in which every woman is interested. The foes that beset the baby will be shown and the best and most modern methods of besting these foes will be illustrated and demonstrated. There will be held children's clinics; there will be graphic illustrations of child labor and its effect on the health and growth of the child; there will be a rest room for mothers and babies and a day nursery. The building shown in the illustration will house the Child Welfare exhibit and it will be one of the most interesting buildings on the exposition grounds to visit; it will also be one in which men and women and children may learn valuable lessons.

Fertilizers

—FOR 1913—

We desire to notify our farmer friends that we are ready to supply them with fertilizers in all of the popular brands and formulas. We sell the celebrated brands

Bradley, Baldwin and Etiwan

These goods have been used by farmers of this county for many years and have given satisfaction.

We also have contracted for a large supply of ingredients for mixing fertilizers at home. Bear in mind that we can fill your orders for any kind of plant food, the dependable kind. Come in to see us.

W. W. Adams & Co.

CLEMSON AGRICULTURAL COLLEGE.

Enrollment Over 800.—Value of Property Over a Million and a Third.—Over 90 Teachers and Officers.

Degree Courses. Agricultural, (seven courses). Chemistry; Mechanical and Electrical Engineering; Civil Engineering; Textile Industry; Architectural Engineers.

Short Courses. One-Year course in agriculture; 2-year course in textile industry; four weeks winter course in cotton grading; four-weeks winter course for farmers.

Cost: Cost per session of nine months, including all fees, heat, light, water, board, laundry, and two complete uniforms, 133.45. Tuition, if able to pay, \$40 extra. Total cost per session for the one year agricultural course, 117.55; four-weeks course all expenses, \$10.

Scholarship and Entrance Examinations: The college maintains 167 four-year agricultural and textile scholarships, and 51 one-year agricultural scholarships. Value of scholarships \$100 per session and free tuition. (Students who have attended Clemson College, or any other college or university, are not eligible for the scholarships unless there are no other eligible applicants.)

Scholarship and entrance examinations will be held by the County Superintendent of Education on July 11th, at 9 a. m.

NEXT SESSION OPENS SEPTEMBER 13, 1913.

Write at once to W. M. RIGGS, President.

Clemson College, S. C., for Catalog, Blanks, etc. If you delay, you may be crowded out.

Southern Railway Schedule Changes.

Effective Sunday, May 25, 1913, the Southern Railway announces the following schedule changes. Train 232 from Aiken, arrive Edgefield 4:45 p. m., instead of 5:40 p. m. as at present. Train No. 20 will leave Trenton 7:15 p. m. instead of 5:20 p. m. as at present, affording connection to Columbia leaving Edgefield on No. 207 at 6:50 p. m.

A. H. Acker, TPA, Augusta, Ga.

The Ideal Pressing Club

Neat Cleaning And Pressing.

We can please the most fastidious person. All kinds of repairing and dyeing. We make a specialty of cleaning and pressing—ladies coat suits and skirts—and do the work nicely. We appreciate your patronage. Guarantee satisfaction.

FRANK MAYNARD, Prop., Beaver D. Mill St., Edgefield, S. C.

Notice to Stock Raisers

My handsome combination stallion and also my registered jack will make the spring season at my farm near Clark's Hill. This is a splendid opportunity for the farmers to grow some fine horses and high priced mules.

The best of care taken with mares sent, but I am not responsible for accident.

Terms: \$15 to insure mares in foal.

Jas. H. Garrett.

Worn Out?

No doubt you are, if you suffer from any of the numerous ailments to which all women are subject. Headache, backache, sideache, nervousness, weak, tired feeling, are some of the symptoms, and you must rid yourself of them in order to feel well. Thousands of women, who have been benefited by this remedy, urge you to

TAKE

Cardui

The Woman's Tonic

Mrs. Sylvania Woods, of Clifton Mills, Ky., says: "Before taking Cardui, I was, at times, so weak I could hardly walk, and the pain in my back and head nearly killed me. After taking three bottles of Cardui, the pains disappeared. Now I feel as well as I ever did. Every suffering woman should try Cardui." Get a bottle today. E-68

WINTHROP COLLEGE SCHOLARSHIP and ENTRANCE EXAMINATION.

The examination for the award of vacant scholarships in Winthrop College and for the admission of new students will be held at the County Court House on Friday, July 4, at 9 a. m. Applicants must be not less than sixteen years of age. When Scholarships are vacant after July 4 they will be awarded to those making the highest average at this examination, provided they meet the conditions governing the award. Applicants for Scholarships should write to President Johnson before the examination for Scholarship examination blanks.

Scholarships are worth \$100 and free tuition. The next session will open September 17, 1913. For further information and catalogue, address Pres. D. B. Johnson, Rock Hill, S. C.

1785-1913.

COLLEGE OF CHARLESTON

South Carolina's Oldest College. 129th year begins September 26th.

Entrance examinations at all the county seats on Friday, July 11th, at 9 a. m.

Full four year courses lead to the B. A. and B. S. degrees.

A free tuition scholarship is assigned to each county of the state. Spacious buildings and athletic grounds, well equipped laboratories, unexcelled library facilities, and the finest Museum of Natural History in the South.

Expenses reasonable. For terms and catalogue, address Harrison Randolph, Pres.

Constipation Cured.

Dr. King's New Life Pills will relieve constipation promptly and get your bowels in healthy condition again. John Supsic, of Sanbury, Pa., says: "They are the best pills I ever used, and I advise everyone to use them for constipation, indigestion and liver complaint." Will help you. Price 25c. Recommended by Penn & Holstein, W. E. Lynch & Co.

FIRE INSURANCE

E. J. NORRIS, Agent Edgefield, South Carolina

Representing the HOME INSURANCE COMPANY, of New York, and the old HARTFORD, of Hartford, Connecticut.

The HOME has a greater Capital and Surplus combined than any other company.

The HARTFORD is the leading company of the World, doing a greater Fire business than any other Co.

See Insurance Reports

PRUDENTIAL

LIFE

"HAS THE STRENGTH OF GIBRALTAR."

E. J. Norris,

FIRE AND LIFE INSURANCE.

Roup is Common Now

It may appear in your flock at any time. Don't let it attack your fowls and cut down your profits. Prevent it. Put in the drinking water

Pratt's Roup Cure

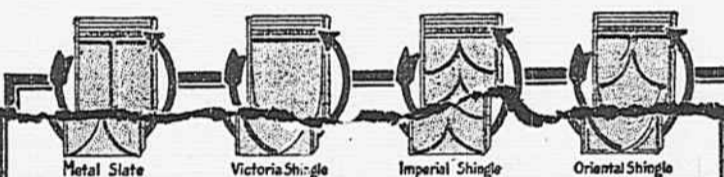
Guaranteed to prevent and cure this fatal disease. 25c. 50c. \$1. Each 25c. box makes 10 gallons of cold and roup medicine. Sample FREE.

Pratt's Poultry Regulator

Keeps fowls in the best physical condition—able to resist disease. 25c. 50c. \$1. 25-lb. pack, \$2.50 "Your money back if it fails" Get Pratt's Poultry-Feeding Booklet



W. E. LYNCH & CO., L. T. MAY, JONES & SON, TIMMONS & MORGAN, Edgefield, and S. T. HUGHES, Trenton



CORTRIGHT METAL SHINGLES

The four designs of Cortright Metal Shingles as shown above are made in any of the following ways:

1. Stamped from Tin-plate and painted Red.
2. Stamped from Tin-plate and painted Green.
3. Stamped from Tin-plate and Galvanized by a hand-dipping process.
4. Stamped from special tight-coated Galvanized Sheets.

Each and every genuine Cortright Metal Shingle is embossed with this Trade-mark, "Cortright Reg. U. S. Pat. Off."

For Sale by

Stewart & Kernaghan

Early Arrivals

We are daily opening up new Spring goods and invite the ladies to call and see our early arrivals, particularly our

Laces, Embroideries and Wash Goods

We are showing a very strong line of these goods at low prices.

J. W. PEAK

Don't Read

If not interested. But you are obliged to be interested where money is to be saved in the purchase of necessities of life both for yourself and livestock. We are now in our warehouse, corner of Fenwick and Cumming streets, two blocks from the Union Passenger Station where we have the most modern warehouse in Augusta with floor space of 24,800 square feet and it is literally packed with Groceries and feeds from cellar to roof. Our stock must be seen to be appreciated. Our expenses are at least \$450.00 a month less since discontinuing our store at 863 Broad street, and as goods are unloaded from cars to warehouse, we are in a position to name very close prices. If you really want the worth of your money see or write us

ARRINGTON BROS. & CO.

Augusta, Ga.