

## HER CELEBRATION

How an Obtuse English Girl Was Won Over.

BY SUSANNE GLENN.

At eight o'clock in the evening of July second, Jack Duncan swung briskly up the walk toward the piazza that held the charming person of Victoria Mann.

He was going to ask her to help him celebrate the Fourth. He knew that she knew this, and that she was going to refuse. But in spite of it, his lively countenance held an extremely cheerful expression.

"Good evening, Miss Mann," he said, bowing low.

"Good evening," The girl's lips were demure, but her eyes twinkled.

Duncan sank in a chair in close proximity to the big rocker.

"Are you aware, he inquired, "that this is the second of July?"

The girl lowered her eyelids, thereby adding to her appearance of demureness, and incidentally hiding the tell-tale twinkles.

"I—I believe I did notice it when I studied my Sunday school lesson," she murmured.

"Then you will understand that the day after tomorrow will be the Fourth of July," he continued painstakingly.

No response.

"But surely, my dear girl, you can grasp that fact!"

Still she remained silent.

Leaning over, he lifted the pretty brown little hand resting on the broad arm of the rocker, and lingeringly counted off the days on its fingers.

"One, two—Sunday, the second of July, Monday, the third, Tuesday the fourth—the great and glorious Fourth, Victoria!" tightening his hold on the fingers by way of emphasis.

When the blue eyes lifted the twinkles had been subdued, they held only a look of calm wonder.

"Y—es," she murmured, as if doubting.

"It assuredly is, my girl! And you are going to spend it with me this year—we'll have the time of our lives!" His voice held confidence, and affectionate persuasion.

Miss Mann drew away her hand and placed it under the folds of her



"Victoria, Listen to Me!"

gown for future safety. She further rocked in a comfortable, maddening manner.

"I expect to spend Tuesday very quietly, while father and the mater go to the park; I fear you will find that too uninteresting," she said, sweetly.

The young man looked at her pityingly but with unabating cheerfulness.

"Victoria, you're terribly obtuse. It isn't your fault, of course, but it is a dreadful handicap, particularly since taking up your residence in this land of 'quickness.'"

"Victoria's eyes flashed preliminary fireworks."

"I remember," continued Duncan gazing rather thoughtfully, "the first year you were here. We youngsters planned a picnic for the Fourth, and my heart was just set on taking the pretty little English girl—you were patently pretty in those days, Victoria!"

"I wish I could retain as pleasant a remembrance regarding your extreme youth, Mr. Duncan!"

"Quite true, my dear, age has used me kindly!"

"But my proposal was refused—leaving no room for doubt! My heart was crushed for the time being."

"During the subsequent three hundred and sixty-four days my attentions, however, were accepted—even gracefully courted—but again on the three-hundred and sixty-fifth I was spurned, rejected, walked over! I shall not disclose the times this has been repeated, but I've never missed a year! Surely, such patience, such perseverance, is worthy of a better fate."

"It is worthy of a better cause, at least," answered the girl, crisply.

"Will you tell me, fair one, why you thus treat me?" with deep melancholy.

"Because," flashed the girl, refusing to smile, "I am not an American—your Fourth is nothing to me!"

"Girl, girl! Are you wiser than your own father? He, too, was born under the lion, but he'll make a racket next Tuesday that a 7 born American might be proud to produce!"

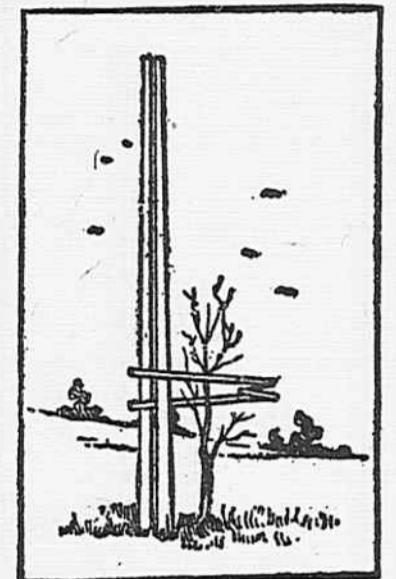
## HORTICULTURE



## GOOD SUPPORTER FOR PLANTS

Florida Man Contrives Standard With Wire Arms That Guides Growth of Young Trees.

For the support of plants and young trees during the period when they are getting a start in life a Florida man has designed the contrivance repro-



Supporter for Plants.

duced here. A standard with longitudinal grooves on the opposite faces of its two sections is thrust into the ground near the tree. A length of wire, bent into a coil at the center and forming two arms, is attached to the standard by rolled ends that engage the grooves. These arms can be slid up or down the standard to accommodate the height of the plant. The latter is embraced by these two arms and not only is forced to grow straight, but is given much-needed support during the heavy rains and wind storms that beat so many unsupported plants and young vegetation of all kinds to the earth.

## SOME LITTLE FLOWER HINTS

Care Should Be Used in Taking Up Plants to Place in Window—Get Cuttings of Favorites.

In taking up plants to put in the window, be careful about the roots. If they are maltreated in any way, be sure to cut off all the bruised parts and shorten in a corresponding way the top branches of the plant.

Newly potted plants sometimes do not do well at first. Don't expect too much of your plants until they are well established. As soon as new feeding roots are formed the plant will pick up. Maybe you have given too much water which has soured the soil. Water only when the surface of the soil feels dry to the touch.

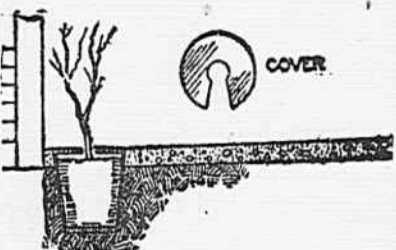
If you have a large east window turn it into a bower of beauty. Fasten a strong shelf below the sill and nail a wire arch or grill across the top of the window. When you dig your Madera vine select several large, healthy roots and put two or three in a six-inch pot. Place a pot at each end of the shelf. As the vines grow furnish them with string or narrow wire netting to grow on. They will soon reach the top of the window and cover the arch.

Go into the garden before Jack Frost appears and take cuttings of all your favorites. Slip a nasturtium for winter blooming. The double nasturtium roots easily and is a desirable pect plant.

## PLANT IN CEMENT SIDEWALK

Good, Cleanly Way of Arranging Pot or Keg Out of Sight Is Shown in the Illustration.

The pot holding a plant or vine at the entrance of a residence in a crowded city is usually in the way, and when the plant is watered the walks become wet, says the Popular Mechanics. The illustration shows a good



Plant in Sidewalk.

cleanly way of arranging a pot or keg in the walk, so that it is out of sight, and the seeping water will be taken up by the earth. A cover may be made for the pot as shown.

**Stable Manure in Orchard.**  
The value of stable manure or other fertilizer in the orchard depends almost entirely upon the conditions of the soil and climate. Some soils grow excellent fruit without any fertilizer, while others must be fed. Simply a case of science and good judgment.

## Fruit Varieties.

The farmer who raises fruit for his own family should have a much larger variety than the commercial orchardist, because the latter must produce enough of each kind to ship to advan-

## WAY TO SPRAY STRAWBERRIES

Leaf Blight Causes Spots on Leaves and Weakens Plants—Remedy for Leaf Roller.

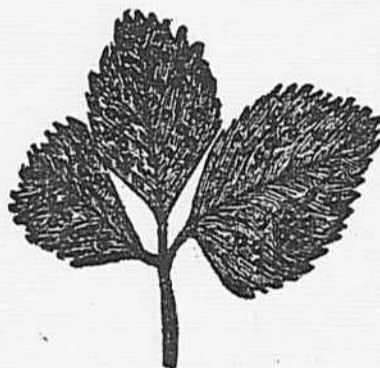
(By W. H. CHANDLER.)  
Leaf blight is a disease which causes spots on strawberry leaves. With some varieties it very seriously weakens the plants. Varieties like Aroma and Gaudy very largely resist it.

Spray with Bordeaux mixture after the crop is harvested, probably after renewing has been done, and give three or four sprayings at intervals of two weeks. On badly infested beds after the crop is off, mow everything down and let it dry and burn off when there is a brisk wind, then follow with a spraying.

The strawberry leaf roller is a moth that appears in the spring, depositing eggs on the leaves. When the eggs hatch, the larvae feed upon the leaves, folding the leaves over and fastening them by means of a silken thread. They thus eat only on the inner side of this folded leaf. They sometimes seriously injure the plants, causing them to dry up. There are two broods a year. The second brood appears shortly after the strawberries have been gathered.

The surest remedy for this insect is to mow down the plants and weeds and burn the bed off shortly after the strawberries have been picked. Spraying when the berries are about one-half grown with arsenical poison will kill the insect, but it is difficult to spray strawberries as they are so soon ripe after they set. The burning off process recommended does not seem to be entirely harmless to the strawberry field, as occasionally some plants will be killed and it will thus be more difficult to secure a good row for the next year.

The white grub that bothers us in the garden sometimes may be a fairly troublesome insect in the strawberry field. The insect feeds upon the roots of some plants, especially grasses.



Leaf Showing Injury.

When the field is plowed up, if they are numerous they may feed upon the strawberry root and do considerable harm.

The remedy is to grow some other crop than grass or strawberries on the land until they are starved out.

The Crown Borer is a beetle somewhat similar to the Plum Curculio. They deposit their eggs in June or early July. The eggs hatch into larvae that eat their way into the crown and there in feeding, mine out the crown more or less.

These beetles do not migrate very badly, so the best remedy is to rotate the crop, putting no strawberries on land that has been in strawberries during the previous few years, provided these insects are serious.

## For Tree Planting.

If you intend to plant a few choice trees next spring dig large holes for them this fall, fill them with manure, removing it next spring and filling in up to the desired depth for the tree.

## HORTICULTURAL NOTES

Most small fruits form their fruit buds in the spring.

The quickest growing tree for a shelter belt is the willow.

Remember that the wood ashes are the best kind of fertilizer for the orchard, lawn or garden.

The city dealer profits by the laziness of the grower by grading and repacking his badly assorted fruit.

Young fruit trees that were planted in the autumn of last year, or in the spring of this year, should be examined carefully.

That corky old apple, the Ben Davis, still holds a high place in the city markets because its fine appearance deceives the ignorant buyer.

In very dry weather fruit buds are formed quite early and in case of a wet fall immature fruit buds sometimes change into leaf buds.

Unless rotten apples are promptly removed from the orchard, fruit pests will have an ideal place in which to hibernate during the winter months.

After the raspberries are through fruiting, the old canes are taken out. The canes made this year will produce the fruit next year. Burn the prunings.

Cantaloupes should not be grown near squash, pumpkin or cucumber vines, as the pollen will mix, giving the cantaloupes a flavor of the squash or cucumber.

Spray the apples twice with Bordeaux mixture to prevent injury from bitter rot. Put arsenate of lead in it to destroy late-hatched insects, such as the fall web worm.

Spraying with kerosene emulsion is one of the best remedies for the rose leaf hopper. Make the first application as the pest first appears and repeat as often as is necessary.

Strawberry plants that have been grown all summer in pots and set this month will bear next spring. Use an abundance of manure in preparing the ground, to insure a good crop.

## Treasurer's Notice.

The County Treasurer's office will be open for the purpose of receiving taxes from the 15th day of October, 1912, to the 15th day of March, 1913.

All taxes shall be due and payable between the 15th day of October, 1912, and December 31st, 1912.

That when taxes charged shall not be paid by December 31st, 1912, the County Auditor shall proceed to add a penalty of one per cent for January, and if taxes are not paid on or before February 1st, 1913, the County Auditor will proceed to add two per cent, and five per cent from 1st of March to the 15th of March. After which time all unpaid taxes will be collected by the Sheriff.

The tax levies for the year 1912 are as follows:

For State purposes	5 3-4 mills.
Ordinary County	41-2 "
Cons. School tax	3 "
Special County tax	2 3-4 "
Bacon S. D. Special	2 "
Edgefield S. D.	2 "
Long Cane S. D.	3 "
Liberty Hill S. D.	3 "
Johnston S. D.	5 "
Collier S. D.	4 "
Flat Rock S. D.	4 "
Prescott S. D.	3 "
Plum Branch S. D. No 1	5 "
White Town S D	3 "
Trenton S D	2 "
Ward S D.	2 "
Moss S D.	3 "
Parksville S D	3 "
Washington S D	2 "
Oak Grove S D	3 "
Red Hill S D	21-2 "
Shaw	2 "
R R Bonds Wise T's p	11-4 "
R R Bonds Pickens	3 "
R R Bonds Johnston	3 "
R R Bonds Pine Grove	12 "
R R Bonds Blocker	12 "
Bonds Town Edgefield	1-2 "
School Bonds	1 "
Town of Edgefield	10 "

All male citizens between the ages of 21 years and 60 years except those exempt by law are liable to a poll tax of One Dollar each. A capitation tax of 50 cents each is to be paid on all dogs.

The law prescribes that all male citizens between the ages of 18 and 55 years must pay \$2.00 commutation tax or work six days on the public roads. As this is optional with the individual, no commutation tax is included in the property tax. So ask for road tax receipt when you desire to pay road tax.

James T. Mims,  
Co. Treas. E. C.

## PROFESSIONAL

DR. J. S. BYRD,

Dental Surgeon

OFFICE OVER POSTOFFICE.

Residence Phone 17-R. Office 3.

A. CORLEY, Surgeon  
Dentist. Appointments  
on Wednesdays.  
Crown and Bridge work a  
specialty.

James A. Dobey,  
DENTAL SURGEON,

Johnston, S. C.

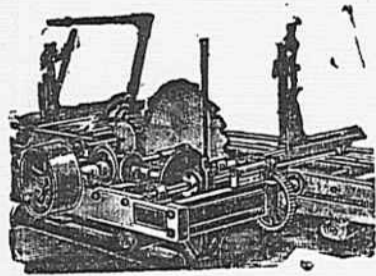
OFFICE OVER JOHNSTON DRUG CO.

## Make the Old Suit Look New

We are better prepared than ever to do first-class work in cleaning and pressing of all kinds. Make your old pants or suit new by letting us clean and press them. Ladies skirts and suits also cleaned and pressed. Satisfaction guaranteed.

Edgefield Pressing  
Club

WALLACE HARRIS PROP.



Light Saw, Lathe and Shingle Mills, Engines, Boilers, Supplies and repairs, Portable, Steam and Gasoline Engines, Saw Teeth, Files, Belts and Pipes. WOOD SAWS and SPLITTERS.

Gins and Press Repairs.

J. LOMBARD,

AUGUSTA, GA.

Men's Inhumanity to Man.  
Some men, when they are arrested on a serious charge, are sent to jail. Others, like one in New York, fare much worse. The magistrate told his wife to take him home and tell him what she thought of him. — Rochester Democrat and Chronicle.

## LOOK FOR THIS TRADE MARK

We selected and registered this trade-mark and it appears on the bags of all our fertilizers. It is your guarantee of 100% quality and protection against inferior fertilizers.

This Giant Lizard—a land animal, weighing 25 to 30 tons, lived in South Carolina during the formation of our phosphate beds.



REGISTERED

Prosperous farmers all over the South are satisfied with results obtained from our fertilizers. Ask our agent.

PLANTERS  
FERTILIZER AND  
PHOSPHATE CO.  
CHARLESTON, S.C.

## DO YOU DRIVE TO TOWN?



This farmer telephoned and stayed at home.



This farmer went to market.

And find the market unfavorable for your produce? The farmer who has a telephone in his home can telephone first. The useless trips thus saved are worth the cost of service.

Under the plan of the Bell System the service costs but a trifle; the farmer owns the instrument and the equipment.

Write to nearest Bell Telephone Manager for pamphlet, or address

Farmers' Line Department  
SOUTHERN BELL TELEPHONE AND TELEGRAPH CO.  
SOUTH PRYOR STREET, ATLANTA, GA.



## AT HARVEST TIME PUT SOME MONEY IN OUR BANK

When the crops are in, and the profits of the farm can be counted in money, the time to start a bank account is ripe; by doing so you may conduct your farm as every good business is conducted.

OFFICERS: J. C. Sheppard, Pres.; W. W. Adams, Vice-pres.; E. J. Mims, Cashier; J. H. Allen, assistant Cashier.

DIRECTORS: J. C. Sheppard, W. W. Adams, J. Wm. Thurmond, Thos. H. Rainsford, J. M. Cobb, B. E. Nicholson, A. S. Tompkins, C. C. Fuller, W. E. Prescott.