

The J. Willie Levy Comp'y.

—of Augusta,—

Extends a fall time welcome to our friends and announce the opening of the best and newest ideas in fall suits, overcoats, hats and furnishings for young men and boys.

For the ladies we have just placed on display the brightest and most up-to-date ideas in ready-to-wear suits, cloaks, waists and odd skirts.

Call and make our store your headquarters while in Augusta. Waiting and resting room for the ladies.

Henry B. Garrett | Van Holt Garrett | Frank A. Calhoun

Garrett & Calhoun

Incorporated

Cotton Factors

Cor. Reynolds and 8th Sts. Augusta, Ga.

We solicit shipments of your cotton.
Quick results and prompt returns.

FIRE INSURANCE

E. J. NORRIS, Agent
Edgefield, South Carolina

Representing the HOME INSURANCE COMPANY, of New York, and the old HARTFORD, of Hartford, Connecticut.

The HOME has a greater Capital and Surplus combined than any other company.

The HARTFORD is the leading company of the World, doing a greater Fire business than any other Co.

See Insurance Reports

PRUDENTIAL

LIFE

"HAS THE STRENGTH OF GIBRALTAR."

E. J. Norris,

FIRE AND LIFE INSURANCE.

CORTRIGHT METAL SHINGLES



ARE FIREPROOF

Storm-proof, too, because they interlock and overlap in such a way that the finest driving snow or rain cannot sift under them.
Best roof for country buildings, because they're safe from all the elements.
They'll last as long as the building, and never need repairs.

Stewart & Kernaghan
EDGEFIELD, S. C.

General Insurance Agency

I beg to announce to my friends and the public generally that I have re-entered the fire insurance business, and am in a position to place any business intrusted to me with a due and proper regard for the confidence placed in me by my patrons.

I also represent one of the leading Life and Accident Health companies. Respectfully soliciting a share of your business and with appreciation of past kindnesses shown me, I am, truly yours,

C. A. Griffin,

Rear of N. G. Evans, Esq.

EYE TALK NO. 4

DETAILS

The difference between a penitentiary and a palace is largely a matter of detail.

Both are designed for human habitation and serve equally well to protect the inmates from the elements.

But one is a vastly more comfortable place of abode than the other.

SO IT IS WITH GLASSES

Crudely fitted glasses MAY help your vision, but great care in every detail of adjustment is essential to safety and comfort.

YOUR EYES ARE WORTH A CORRECTLY FITTED PAIR OF GLASSES.

GEO. F. MIMS,

Optician, Edgefield, S. C.

FIRE INSURANCE

Go to see

Harling & Byrd

Before insuring elsewhere. We represent the best old line companies.

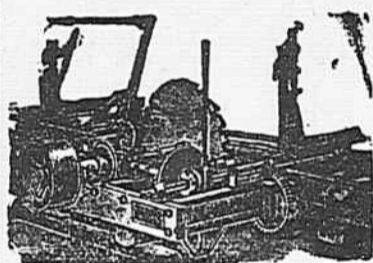
Harling & Byrd
At the Farmers Bank, Edgefield

V. A. Hemstreet & Bro.

Hunting Supplies,
Knives, Pistols, Etc.

Repairs

655 Broad
Near Ga. R. R. Bank



Light Saw, Lathe and Shingle Mills, Engines, Boilers, Supplies and repairs. Portable, Steam and Gasoline Engines, Saw Teeth, Files, Belts and Pipes. WOOD SAWS and SPLITTERS.

Gins and Press Repairs.
Try LOMBARD,
AUGUSTA, GA.

Suit TO ORDER

\$15
UNION MADE

It's not the cloth that makes the man, it's the man that makes the clothes. Suits, at prices to suit the pocket.

When it comes to that, we're the best.

When it comes to price and workmanship we're the best. We are on the corner of satisfaction and joy. We are on the corner of streets, opposite depot. Watch for display at our party fair.



O. P. Bright,

FARM AND BEES

HOW BEES COLLECT POLLEN

Important Part Played by the Auricle in the Process—Dust Gathers on Body Hairs.

The pollen dust gathers on the body hairs of the bees as the result of the visits paid to the flowers. These hairs, as seen under the microscope, are branched, and therefore are admirably adapted to hold the pollen, writes F. W. L. Sladen in the Gleanings in Bee Culture.

In the bumble bee (and probably also the honey bee) the pollen dust in the hairs on the thorax is collected on brushes on the inner sides of the metatarsi, or basal joint of the foot, of the middle pair of legs, which are

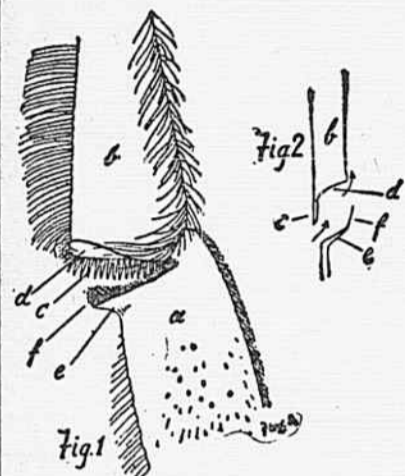


Fig. 1—Junction of tibia and metatarsus in hind leg of worker honey bee, outer side.

Fig. 2—Diagrammatic section of the same, showing mode of conveying pollen.

a, metatarsus; b, tibia; c, comb; d, receiver for pollen; e, auricle; f, fringe of hair on auricle.

moistened with honey from the tongue to make the dust cohere. The pollen dust in the hair on the abdomen is collected on brushes on the inner sides of the metatarsi of the hind legs, and this is probably moistened by rubbing the hind legs together.

After this the pollen is transferred to the corbicula (or pollen-basket) on the tibiae of the hind legs, where, as every one knows, it accumulates into a great lump as the result of repeated contributions from the metatarsi. But how does it get there? It is evident, as Cheshire observed, that the pollen on the right metatarsus is transferred to the left corbicula, and the pollen on the left metatarsus is transferred to the right corbicula. Cheshire supposed ("Bees and Beekeeping," 1886) that the metatarsus discharges its pollen on the corbicula by scraping its brush on the upper side of the tibia; but I find that this is not the case. The pollen is scraped off the metatarsal brush by a comb (c) situated at the end of the tibia on the inside, and it passes into a small concave receiver (d) that joins the comb; then, when the leg is straightened, a projection on the metatarsus called the auricle (e) closes upon the receiver, compresses the pollen, and at the same time forces it out to the lower end of the corbicula, which is here slightly depressed and almost wholly devoid of hairs. The compression of the pollen in the receiver is an essential part of the process; for loose pollen grains such as occur on the metatarsal brushes would not hold together in the corbicula. In the bumble bee the angle between the surface of the receiver and that of the corbicula is obtuse, and the compressed pollen easily passes from the one to the other; but in the honey bee there is a sharp angle at the corner, and the auricle bears a fringe of hairs (f) to guide the stream of pollen to the corbicula; also the honey bee's auricle is evidently pressed back by the pollen, for it has no other means of escape.

moistened with honey from the tongue to make the dust cohere. The pollen dust in the hair on the abdomen is collected on brushes on the inner sides of the metatarsi of the hind legs, and this is probably moistened by rubbing the hind legs together.

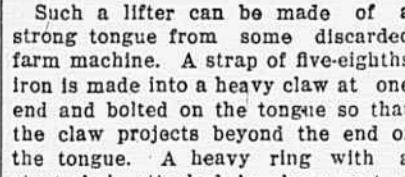
After this the pollen is transferred to the corbicula (or pollen-basket) on the tibiae of the hind legs, where, as every one knows, it accumulates into a great lump as the result of repeated contributions from the metatarsi. But how does it get there? It is evident, as Cheshire observed, that the pollen on the right metatarsus is transferred to the left corbicula, and the pollen on the left metatarsus is transferred to the right corbicula. Cheshire supposed ("Bees and Beekeeping," 1886) that the metatarsus discharges its pollen on the corbicula by scraping its brush on the upper side of the tibia; but I find that this is not the case. The pollen is scraped off the metatarsal brush by a comb (c) situated at the end of the tibia on the inside, and it passes into a small concave receiver (d) that joins the comb; then, when the leg is straightened, a projection on the metatarsus called the auricle (e) closes upon the receiver, compresses the pollen, and at the same time forces it out to the lower end of the corbicula, which is here slightly depressed and almost wholly devoid of hairs. The compression of the pollen in the receiver is an essential part of the process; for loose pollen grains such as occur on the metatarsal brushes would not hold together in the corbicula. In the bumble bee the angle between the surface of the receiver and that of the corbicula is obtuse, and the compressed pollen easily passes from the one to the other; but in the honey bee there is a sharp angle at the corner, and the auricle bears a fringe of hairs (f) to guide the stream of pollen to the corbicula; also the honey bee's auricle is evidently pressed back by the pollen, for it has no other means of escape.

POST PULLER SAVES LABOR

Implement Can Be Made of Strong Tongue Taken From Some Discarded Farm Machine.

When a fence must be moved a good post puller saves an unmerciful lot of back ache and time, writes Gilbert F. Parrish in the Wisconsin Agriculturist.

Such a lifter can be made of a strong tongue from some discarded farm machine. A strap of five-eighths iron is made into a heavy claw at one end and bolted on the tongue so that the claw projects beyond the end of the tongue. A heavy ring with a stout chain attached is also a part of



A Post Puller.

the outfit. The ring is put over the post down to the ground. The claws are caught under a link of the chain and a block put under the pole as a fulcrum. This leverage will raise the post with very little effort. Every farm ought to have such a lifter. The parts should be solid and strong, for the strain is tremendous.

Flagged Train With Shirt

Tearing his shirt from his back an Ohio man flagged a train and saved it from a wreck, but H. T. Alston, Raleigh, N. C., once prevented a wreck with Electric Bitters. "I was in a terrible plight when I began to use them," he writes, "my stomach, head, back and kidneys were all badly affected and my liver was in bad condition, but four bottles of Electric Bitters made me feel like a new man." A trial will convince you of their matchless merit for any stomach, liver or kidney trouble. Price 50c at Penn & Holstein's, W. E. Lynch & Co.

A Great Building Falls

when its foundation is undermined, and if the foundation of health—good digestion—is attacked, quick collapse follows. On the first signs of indigestion, Dr. King's New Life Pills should be taken to tone the stomach and regulate liver, kidneys and bowels. Pleasant, easy, safe and only 25c at Penn & Holstein's, W. E. Lynch & Co.

"Why don't you go in?" asked one tramp of the other, as they stood before the gate. "Dat dog's all right. Don't you see him waggin' his tail?" "Sure I do," said the second tramp, "but he's a-growlin', too, and I don't know which end to believe."—Ex.

"No, no, you mustn't kiss me," she said, as he drew her close to him. "Mother objects to kissing." "Well, dear, I'm not going to kiss her"—Ex.

BEWARE OF MALARIA.

Malaria—Chills and Fevers—common complaints among people living in the Southeastern States, can be effectively relieved in the shortest possible time by R. L. T.—Richardson's Laxative Tonic.

This prescription has been used thirty five years by Dr. Richardson, of Anderson, S. C., in his daily practice as a family physician, and has behind it thousands of testimonials from many prominent South Carolinians and citizens of other neighboring states. R. L. T. is a wonderful corrector of liver troubles and the greatest tonic on the market today. You can absolutely rely on it in any case of chills and fever or malarial poison, constipation or biliousness.

If any member of your family need a tonic that strengthens and builds, go to your druggist today and get a fifty-cent or a dollar bottle of R. L. T., and watch the quick, steady improvement. If your druggist can't supply you write R. L. T. Co., Anderson, S. C.

R. L. T.

The Best Liver Medicine

THE MOST PERFECT TONIC

50c & \$1.00 per Bottle. All Drug Stores.

OVER 25 YEARS' EXPERIENCE

SCIENTIFIC AMERICAN

TRADE MARKS DESIGNS COPYRIGHTS & C.

Anyone wanting a sketch and description may quickly obtain our opinion free whether the invention is probably patentable. Complete, accurate and confidential. Write on Patent form, free of charge, for securing patents. Patents taken through Murin & Co. receive special notice, without charge, in the

Scientific American.

A handsomely illustrated weekly. Largest circulation of any magazine. Terms, \$3 a year; four months, \$1. Sold by all newsdealers.

MURIN & Co. 361 Broadway, New York

Branch Office, 625 F St., Washington, D. C.

JUST PUBLISHED

Webster's NEW INTERNATIONAL Dictionary, (G. & C. Merriam Co., Springfield, Mass.) surpasses the old International as much as that book exceeded its predecessor. On the old foundation a new superstructure has been built. The reconstruction has been carried on through many years by a large force of trained workers, under the supervision of Dr. W. T. Harris, former United States Commissioner of Education, and reinforced by many eminent specialists. The definitions have been rearranged and amplified. The number of terms defined has been more than doubled. The etymology, synonyms, pronunciation, have received surpassing scholarly labor. The language of English literature for over seven centuries, the terminology of the arts and sciences, and the every-day speech of street, shop, and household, are presented with fullness and clearness. In size of vocabulary, in richness of general information, and in convenience of consultation, the book sets a new mark in lexicography.

400,000 words and phrases.

6000 illustrations.

2700 pages.



Write to the publishers for Specimen Pages.

White Town News.

Mr. Editor: We are having some cold weather. Our school has begun, we have the same teacher Miss Carrie Talbert and Miss Bussey from Modoc.

Mr. and Mrs. E. C. Rearden spent Sunday with Mr. and Mrs. F. P. White. Miss Bessie and Maggie spent Sunday with Miss Leona White. Miss Belle Reynolds spent Saturday night with Mrs. A. P. White.

Mr. Arthur White has a new organ.

Miss Belle Reynolds, Mrs. Lydia White and Mr. Walter Rearden made a flying trip to Plum Branch Saturday afternoon.

Gray Eyes.

Southern Railway.

Premier Carrier of the South Schedules Effective September 29, 1912.

(N. B. These figures shown as information only and are not guaranteed). Arrivals and Departures Edgefield, S. C.

8:20 a m No 209, daily, from Edgefield to Trenton. Connects at Trenton for Augusta also Columbia, Spartanburg, Asheville, Knoxville, Cincinnati and points west.

10:18 a m No 231, daily, from Edgefield to Aiken. Connects at Trenton for Augusta.

1:40 p m No 229, daily except Sunday, from Edgefield to Aiken.

6:50 p m No 207, from Edgefield to Trenton. Connects at Trenton for Augusta.

10:05 a m No 208, daily, from Trenton to Edgefield. Connection at Trenton from Columbia and Augusta.

11:00 a m No 230, from Trenton to Edgefield. Connect from Columbia, Charlotte, Danville, Washington, New York and points east.

1:10 p m No 210, daily except Sunday from Aiken to Edgefield.

5:40 p m No 232, daily, from Aiken to Edgefield. Connection from Augusta.

7:40 p m No 206, daily, from Trenton to Edgefield. Connection Columbia, Spartanburg, Asheville, Cincinnati etc.

For detailed information, call on ticket agent, or A. H. Acker, TPA., Augusta, Ga., S. H. Hardwick, PTM., Washington, D. C.

W. E. McGee, AGPA., Augusta, Augusta, Ga.

H. F. Cary, G.P.A., Washington, D. C., E. H. Coapman, VP&GM., Washington, D. C.

Hattie—George proposed to me last night.

Mattie—Did he? That must have been right after I refused him. He wasn't sure which he would do.

"Which he would do? What do you mean?"

"Why, he wasn't certain whether he would propose to you or jump in the lake."—Cleveland Plain Dealer.

PROFESSIONAL

DR. J. S. BYRD,

Dental Surgeon

OFFICE OVER POSTOFFICE.

Residence Phone 17-R. Office 3.

A. CORLEY, Surgeon

Dentist. Appointments at Trenton on Wednesdays. Crown and Bridge work a specialty.

James A. Dobey, DENTAL SURGEON,

Johnston, S. C.

OFFICE OVER JOHNSTON DRUG CO.

Make the Old Suit Look New

We are better prepared than ever to do first-class work in cleaning and pressing of all kinds. Make your old pants or suit new by letting us clean and press them.

Ladies skirts and suits also cleaned and pressed. Satisfaction guaranteed.

Edgefield Pressing Club

WALLACE HARRIS PROP.

No. 666.

This is a prescription prepared especially for Chills and Fever. Five or six doses will break any case of Chills and Fever, and if taken then as a tonic the Fever will not return. It acts on the liver better than Calomel and does not gripe or sicken. 25c.