

WATCH THIS SPACE NEXT WEEK

PHILSON & HENRY

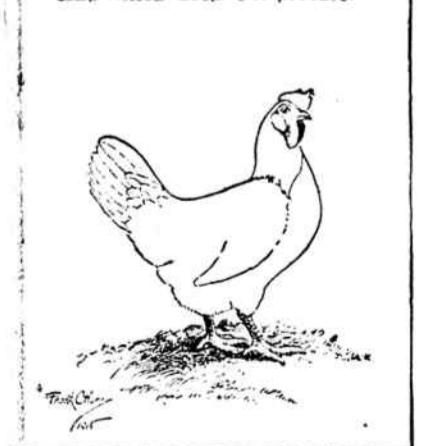
HOW TO CHOOSE POULTRY FOR PRODUCTION OF EGGS OR TABLE FOWLS

Breeds of poultry can be conveniently divided into two classes: (1) the egg breeds, and (2) the general purpose breeds. This division is like that of cattle into beef and dairy types, and of horses into light and heavy classes.

In the egg breeds of poultry the primary requirement is the production of a great number of eggs of standard size. The fowls are not expected to be prime table specimens, but they must lay throughout the year, except when they have to rest and recuperate. They do not sit and hatch chickens and they lay white-shelled eggs. The more popular egg breeds are Leghorns, Minorcas, Anconas and Campines. The most popular variety of these breeds is the Single Comb White Leghorn.

All large egg farms are stocked with White Leghorn pullets and hens, because it is possible to obtain breeding stock in this variety that has blood lines of heavy egg production behind it. Pullets from a heavy-laying strain are better layers than pullets of no special breeding.

EGG TYPE
LAYS WHITE EGGS. NON-SITTER.

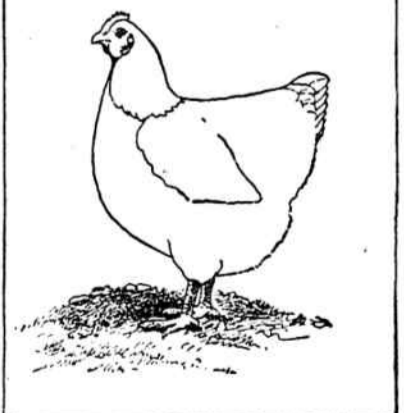


How can one detect heavy laying characteristics in a mature pullet or hen? Notice the illustration of the egg type hen. Note how her body resembles the wedge shape of the dairy cow. Narrow and trim at her neck and wide and deep at the rear, she has the greater part of her body behind her legs. A good layer has a large, soft, flexible rear end, dropping down between her legs and so wide that the legs are set far apart to accommodate it. The rear end of the hen corresponds to the udder of the dairy cow and must be large and yielding, not small and hard.

A simple test of a good layer is to measure the distance from the two pelvic bones (one on each side of the vent) to the rear end of the breast-bone. This distance should be as wide as four fingers when the hen is laying. When the hen has this depth and is also wide across her rear it proves that she has an abundance of room to manufacture eggs constantly and particularly the egg shells, which are formed in this part of her body. Such a hen will lay well when properly cared for.

Hens with a small distance between the pelvic bones and rear of breast-bone and tight or unyielding rear body are not good layers. Put bands on the legs of your layers and note how many consecutive days they lay without resting. That will show how long each hen can maintain her egg flow and the better layers are those which can continue laying for longer periods.

GENERAL PURPOSE TYPE
LAYS BROWN EGGS. SITS AND HATCHES CHICKS.



The general purpose breeds have been selected primarily for the production of table poultry. They are also good layers of brown-shelled eggs. They hatch their chicks and are the most satisfactory for those who want one flock of purebred chickens for both meat and egg purposes. The more popular of the general purpose breeds are Plymouth Rocks, Rhode Island Reds, Wyandottes and Orpingtons. The most popular variety is the Barred Plymouth Rock. This is recognized as the best chicken for market as it is large and well-meated and fattens profitably when confined in crates.

FRANK C. HARE,
Extension Poultry Husbandman,
Clemson Agricultural College.

STATE OF SOUTH CAROLINA,
COUNTY OF ABBEVILLE.
Court of Common Pleas.
The Peoples Savings Bank, Plaintiff,
against
W. Y. Richardson, Defendant.

To the Defendant above named:
YOU ARE HEREBY SUMMONED and required to answer the complaint in this action, which is filed in the office of the Clerk of Common Pleas, for the said County, and to serve a copy of your answer to the said complaint on the subscriber at his office at Abbeville Court House, South Carolina, within twenty days after the service hereof, exclusive of the day of such service; and if you fail to answer the complaint within the time aforesaid, the plaintiff in this action will apply to the Court for the relief demanded in the complaint.

WM. P. GREENE,
Plaintiff's Attorney.
December 16th, 1915.

To the Defendant above named:
TAKE NOTICE, That the complaint in the above stated action was, on December 17th, 1915, filed in the office of the Clerk of Common Pleas for Abbeville County, at Abbeville, S. C., along with the Summons of which the foregoing is a copy, and that the said papers are now on file in his office.

WM. P. GREENE,
Plaintiff's Attorney.
December 17th, 1915.

NOTICE TO WHITE SCHOOL TEACHERS

Beginning when school opens in January, or as near thereafter as possible, the County Board of Education have decided to give the ignorant white men and women an opportunity to get an education.

So for one hour before or after school, if the teachers will teach them, if as many as half dozen will attend, men and women of any age, we will pay the teacher for hours work, one and one-half times as much as they are receiving for regular work by the hour. And should they have as many as 20 scholars, we will pay twice as much per hour.

Report of this work must be made by the teacher monthly and draw their pay at the end of the school year through the County Board. All this must not interfere in the least degree with the work of the regular school.

Rev. J. M. Lawson,
Co. Supt. Education.

To People Without An Education.
Here is a great opportunity. You are not too old. Learn to read and write.

Only simple primary books will be used.

There is a song in every man's heart the woman that loves him knows the words.

STATE OF SOUTH CAROLINA,
COUNTY OF ABBEVILLE.
Court of Common Pleas.
W. F. Nickles, Plaintiff,
against
W. Y. Richardson, Defendant.

To the Defendant above named:
YOU ARE HEREBY SUMMONED and required to answer the complaint in this action, which is filed in the office of the Clerk of Common Pleas, for the said County, and to serve a copy of your answer to the said complaint on the subscriber at his office at Abbeville Court House, South Carolina, within twenty days after the service hereof, exclusive of the day of such service; and if you fail to answer the complaint within the time aforesaid, the plaintiff in this action will apply to the Court for the relief demanded in the complaint.

WM. P. GREENE,
Plaintiff's Attorney.
December 16th, 1915.

To the Defendant above named:
TAKE NOTICE, That the complaint in the above stated action was, on December 17th, 1915, filed in the office of the Clerk of Common Pleas for Abbeville County, at Abbeville, S. C., along with the Summons of which the foregoing is a copy, and that the said papers are now on file in his office.

WM. P. GREENE,
Plaintiff's Attorney.
December 17th, 1915.

NOTICE.

All persons are forbidden to hunt or fish on the lands owned by the undersigned.

J. S. Gibert,
A. H. Gibert,
L. G. Gibert,
M. E. Gibert,
Mrs. J. G. Evans.

TRESPASS NOTICE.

All persons are hereby positively forbidden to trespass upon the lands of the undersigned in Lowndesville Township, by hunting or otherwise, under the penalty of the law.

James M. Baker,
M. E. Baker,
M. A. Baker.

STATE OF SOUTH CAROLINA,
COUNTY OF ABBEVILLE.
Court of Common Pleas.

E. G. White and W. H. White, Partners trading and doing business under the firm name and style of The L. W. White Company, Plaintiffs,
against
W. Y. Richardson, Defendant.

TO OUR SUBSCRIBERS.

When the Press and Banner passed into the hands of its present owners in the early part of the year, they determined to run the paper as a business proposition. If a newspaper is worth taking, it is worth paying for; it is printed at considerable expense for a consideration, and that consideration, in so far as subscribers are concerned, is the subscription price. A newspaper may have an income from its advertisers, but it looks to its subscribers for the support which they owe it.

During the last several months the people who have been passing through a financial depression have insisted on those who were behind, meeting the bill by referring to wait for a more convenient season. It has now arrived in our judgment; and we must ask our subscribers for the labor we have performed for them. The people we work for us, and the people from whom we buy, must be paid and we can only pay them by having your assistance.

A statement has been sent, or will be sent, to you by our book-keeper. When you get it please let us have the necessary remittance. We need the money.

We love all our subscribers, and we want to comply with their desires as much as possible; we certainly want to keep you all, but because this paper is run as a business, it is impossible to furnish it to those who are in arrears and who refuse to pay when asked to do so, and as much as we shall regret to do, we will be forced to discontinue sending the paper to those who will not pay.

The Manager.

SUMMONS.

Culture.
Taking culture in the individual as meaning a development of all the faculties it follows that the most cultured nation is that in which there is the greatest number of all round men. And if this be true, we must at once realize how hopeless is the task of attempting to estimate the extent of culture in various nations.

Man's Moral Being.
It is a fearful thought that we, as it were, exhale ourselves every breath we draw. A man's moral being is concentrated in every second of his life; it lives in the tips of his fingers and the spring of his instep. A very little thing tries what a man is made of.— Cardinal Newman.

Attar of Roses.
The rose gardens of Kazulak, Brouse, Uslak, Adrianople, Ghazepore, Damascus and the Isle of Cashmere produce the famous attar gul, attar of roses. Two thousand rose leaves yield but one dram of attar, and 500 pounds of leaves produce but one ounce of the precious oil.

The tragedy of love is often the greatest tragedy that comes into a man's life.

To the Defendant above named:
YOU ARE HEREBY SUMMONED and required to answer the complaint in this action, which is filed in the office of the Clerk of Common Pleas, for the said County, and to serve a copy of your answer to the said complaint on the subscriber at his office at Abbeville Court House, South Carolina, within twenty days after the service hereof, exclusive of the day of such service; and if you fail to answer the complaint within the time aforesaid, the plaintiffs in this action will apply to the Court for the relief demanded in the Complaint.

William P. Greene,
Plaintiff's Attorney.
December 15th, 1915.

To the Defendant above named:
TAKE NOTICE, That the complaint in the above stated action was, on December 17th, 1915, filed in the office of the Clerk of Common Pleas for Abbeville County, at Abbeville, S. C., along with the Summons of which the foregoing is a copy, and that the said papers are now on file in the office of the Clerk of Common Pleas.

Wm. P. Greene,
Plaintiff's Attorney.
December 17th, 1915.