

**WAYWARD GIRL RETURNS.**

**Floretta Whaley Cooke Homesick for Old Friends.**

Hempstead, L. I., April 4.—Floretta Whaley Cooke, who eloped from Hempstead six years ago, when 15 years of age, with the Rev. J. K. Cooke, rector of St. George's Episcopal church, of which August Belmont is senior warden, returned to the home of her grandmother here today with the statement that she was homesick for old friends and relatives. Cooke did not accompany her, and she stayed but a short while, then returned to New York where she joined the excommunicated clergyman.

The former minister and the girl who removed her family for his sake live in San Francisco.

When Cooke and the girl left Hempstead he deserted his wife, who was a member of a prominent and well-to-do family in Hartford.

The elopement caused a sensation. The former Miss Whaley will soon inherit more than \$25,000 from her father's estate and upon the death of her grandmother, Mrs. Kowah Whaley of this place, she will receive about \$30,000 more. Cooke has gone into the decorating business in San Francisco and has prospered.

**KNIFE GIVER INTELLIGENCE.**

**Remarkable Operation Performed on Imbecile Child in Paris.**

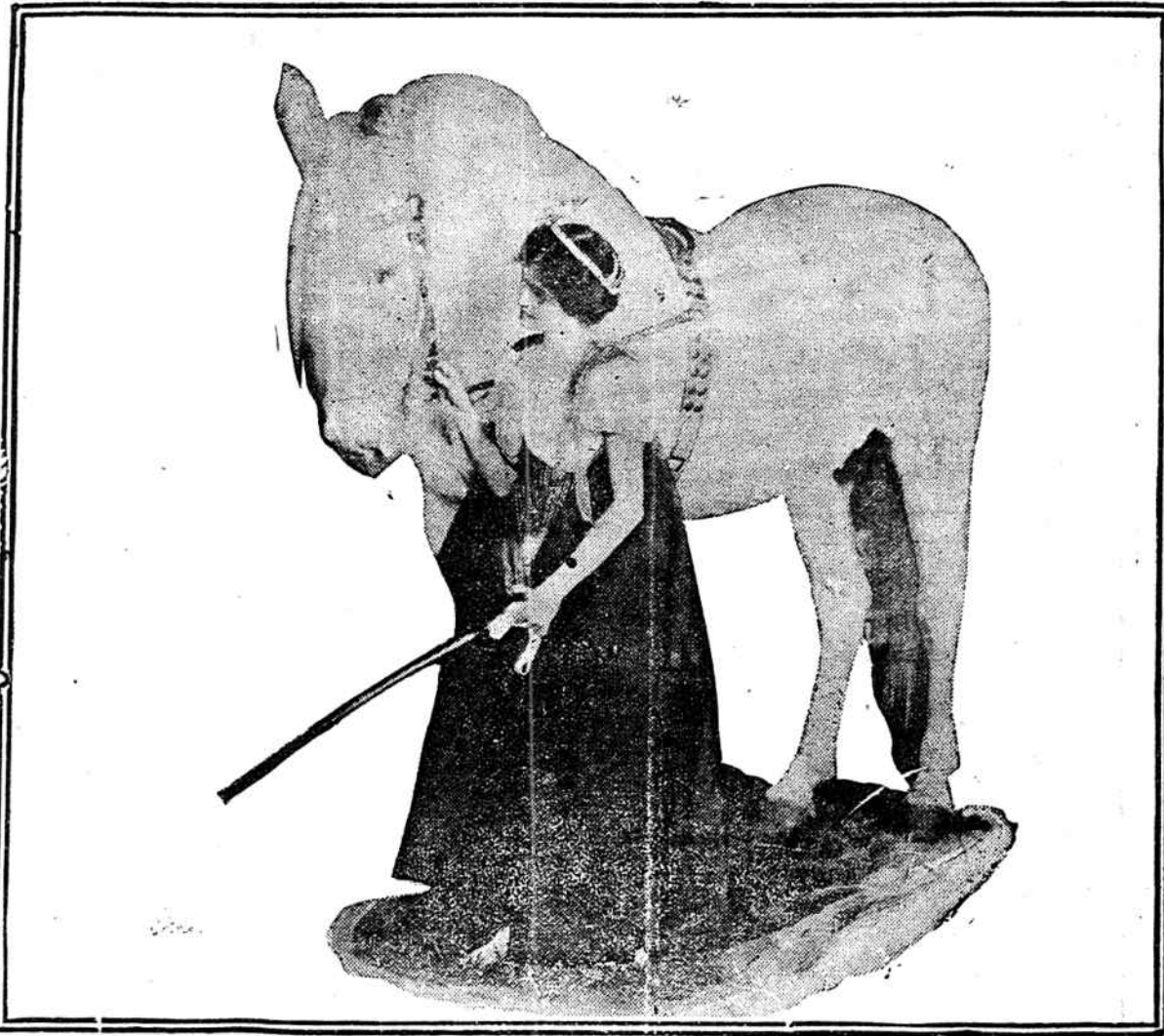
Leipzig, Germany, April 6.—A remarkable operation has just been performed on an imbecile child by Prof. Wrwin Payr, a director of the surgical clinic attached to the Leipzig university, with great success. The professor planted a piece of the thyroid gland taken from a healthy mother into the liver of an imbecile child, who immediately afterward began to improve in intelligence, which steadily increased until a complete cure was effected.

**COLONEL CARRIES COUNTY.**

**Wins Primary in Wyandote, Kan., by Large Majority.**

Kansas City, Mo., April 6.—Theodore Roosevelt carried the presidential preference primary in Wyandote county today by an overwhelming majority. Returns from 55 out of a total of 80 precincts give Roosevelt 1,639, Taft 541, La Follette 6.

Delegates to the State convention and to the congressional convention were therefore instructed for the former president. Franklin and Johnson counties also elected Roosevelt delegates to both.



Polly and Bingo in "Polly of the Circus," Ida St. Leon as Polly, Grand Opera House, Monday night, April 15th.



A ray of sunshine amid a sunburst of roses, Buster and chorus, in the all new and everlasting comedy, Buster Brown, at the Grand Opera House, Friday night, April 12th.

# High-Grade FERTILIZERS

The farmers of Abbeville County have gotten into the way of using Standard Fertilizer—8-8-5-2-2 or 10-2-2. We wish to urge upon them the importance of using high-grade goods. It takes the same time and labor to haul out and distribute 8-8-5-2-2 as it does 8-4-4 or 8-3-3. You give it the same cultivation and the crop made with 8-3-3 or 8-4-4 is far better than the crop made with 10-2-2. It costs a little more but the extra crop will pay the difference in the cost five times over.

8-3-3 is an ideal fertilizer for red lands and 8-4-4 for gray lands. The prosperous, money-making, money-lending farmers of Anderson County have quit using anything except the high-grade fertilizer.

When a man has used the high-grade fertilizer for a while he quits asking the price of the low grade goods.

In using a fertilizer with only two per cent. ammonia, you only use eight pounds of ammonia to the acre. Some of that is washed away and some is eaten up by the grass, so very little gets to the plant. When you have around 14,000 plants to the acre, the amount to each plant is exceedingly small. When you use 8-4-4 you simply double the amount of plant food to each plant.

If you can't risk the high-grade goods on all your crops, risk it on part of it and see the difference in crops. You may take our word for it—you will find it profitable.

## Anderson Phosphate & Oil Co

Anderson, South Carolina.

J. R. Vandiver, President. D. S. Vandiver, Manager.



Big circus scene in "Polly of the Circus," Ida St. Leon as Polly, Grand Opera House, Monday night, April 15th.

**TEDDY POURS ORATORY AS CLOUDS POUR RAIN**

**Colonel Makes Dozen Speeches in Illinois, Being Greeted With Big Crowds Everywhere.**

Springfield, Ill., April 6.—With a dozen speeches and an encounter with a slashing April storm, Col. Roosevelt today put in the first half of his campaign tour of Illinois. Although in several towns the people who listened to him did so at the cost of a drenching, Col. Roosevelt was met everywhere by crowds.

The principal speech was delivered in Springfield this evening. In it Col. Roosevelt attacked Senator Lorimer of Illinois in emphatic language. He took issue with Jos. Choate and other New York lawyers who have formed an association to combat his ideas in regard to the judiciary and expressed his opinion about what he termed the "nice, exclusive persons" of great wealth, who he said, "are easily frightened, especially by the bugbear of majority tyranny."

The formation of the Lottimer-Lincoln Republican league, which is opposed to Col. Roosevelt, furnished the theme. Col. Roosevelt expects to rest tomorrow.

Have your old shoes made as good as new by the up-to-date shoe repair shop. Brown & Percival.

## Foley's Kidney Pills

What They Will Do for You  
They will cure your backache, strengthen your kidneys, correct urinary irregularities, build up the worn out tissues, and eliminate the excess uric acid that causes rheumatism. Prevent Bright's Disease and Diabetes, and restore health and strength. Refuse substitutes. McMURRAY DRUG CO.

After Radium. The Mt. Painter field of South Australia is a wonderful place for the occurrence of rare minerals and a company has been recently formed to recover radium from the earth.

## SOUTHERN RAILWAY.

Premier Carrier of the South

Unexcelled Dining Car Service. Through Pullman Sleeping Cars on all Through Trains. Convenient Schedules on all Local Trains. Arrival and Departure of Trains.

No. of Trains.	Time
108 Leaves for Greenville and Columbia at	9:20 a. m.
112 Leaves for Greenville at	4:05 p. m.
114 Leaves for Columbia at	6:35 p. m.
109 Arrives from Columbia and Greenville at	11:10 a. m.
113 Arrives from Columbia at	5:20 p. m.
115 Arrives from Greenville at	7:55 p. m.

For full information as to rates, routes, etc., consult nearest Southern Railway Ticket Agent, or

Railway Ticket Agent, or  
F. L. JENKINS,  
Travelling Passenger Agent,  
Augusta, Ga.  
J. L. MEEK,  
Asst. Gen. Pass. Agent,  
Atlanta, Ga.  
W. E. MCGEE,  
Division Pass. Agent,  
Charleston S. C.

**WILSON MEN BOLT.**

**Quit Woodbury County (Iowa) Democratic Convention and Name Delegates.**

Sioux City, Iowa, April 6.—The Woodbury county Democratic convention held here today to select 20 delegates to the State convention resulted in a fight between the Champ Clark and the Woodrow Wilson forces.

**WILSON GETS MOST.**

**Win Four Out of Nine Iowa County Conventions.**

Des Moines, Ia., April 6.—Woodrow Wilson adherents won four out of the nine Democratic county conventions in Iowa today, according to reports here tonight. Clark won three. One county elected contesting delegates and the other is in doubt.

**TAFT NOT AN ADVERTISER**

**Senator Townsend Eulogizes Both President and Roosevelt, and Draws Some Contrasts.**

Chicago, April 5.—"Colonel Roosevelt pointed the way; Mr. Taft has traveled the roads." Senator Charles E. Townsend of Michigan in a speech here tonight thus compared the two Republican candidates for the presidency.

Schedule for Due West Railway. Morning train leaves Due West at 10:30. Evening train leaves Due West at 4:30. These trains meet the morning and evening trains on the Southern at Donalds. Passengers can go out from Due West on the evening freight train which leaves Due West at two o'clock.

## SPLENDID SERVICE

... TO ...  
New York, Philadelphia, Baltimore, Washington, and the East

NOW OFFERED BY THE  
**SEABOARD**  
AIR LINE RAILWAY

Schedules

	No. 32	No. 38
Leave Abbeville.....	6.02 p.m.	2.08 a.m.
Arrive Richmond .....	7.22 a.m.	5.05 p.m.
"    Washington.....	10.17 a.m.	8.35 p.m.
"    Baltimore.....	12.14 a.m.	10.00 p.m.
"    Philadelphia.....	2.23 p.m.	1.04 a.m.
"    New York .....	4.40 p.m.	3.50 a.m.

All trains carry through Steel Electric-lighted Pullman Drawing-Room Sleepers, which now enter the new Pennsylvania Railroad Station (in the heart of New York City).

Special No. 32, "The Atlanta-Birmingham Special," carries a through Observation Car, Birmingham to New York. All trains en route serve meals in dining cars—service a la carte. Any agent of the Seaboard can furnish information as to schedules, rates, etc.

C. D. WAYNE,  
Assistant General Passenger

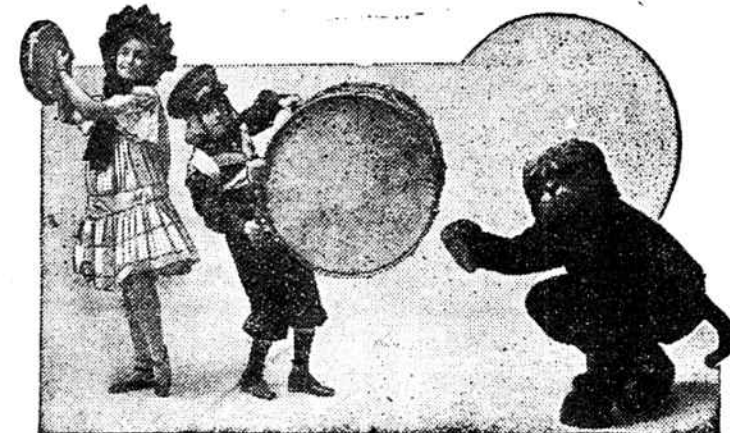
## SCHOOL BOOKS

Tablets                      Pencils

Ink

General School Supplies.

## Speed's Drug Store.



A Royal Band, in the all new and everlasting comedy, Buster Brown, at the Grand Theatre, Friday night, April 12th.