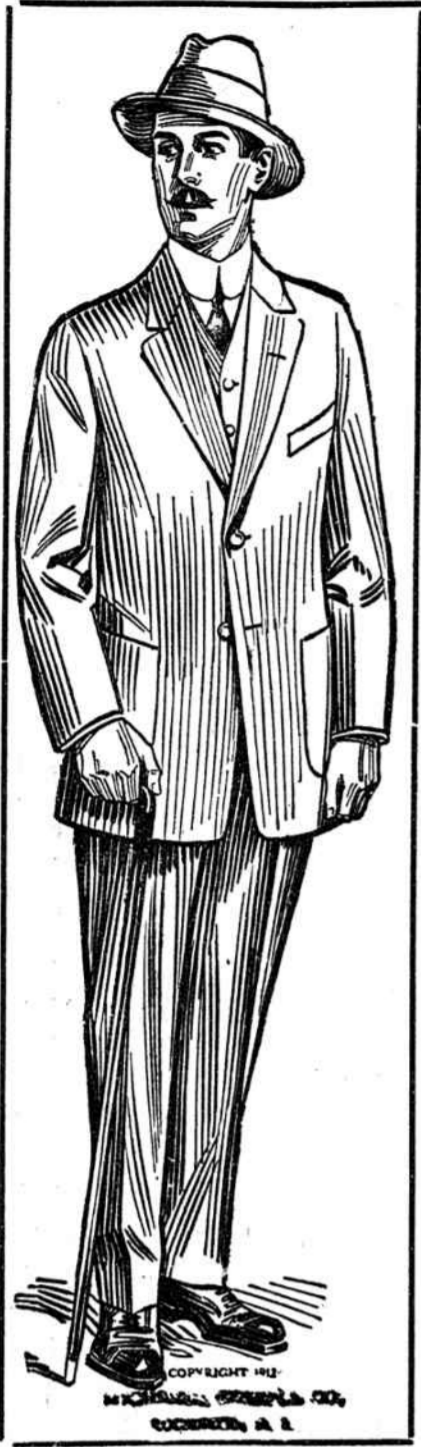


Spring Showing of the Famous Correct Clothes for Gentlemen



Including all the latest Styles and Fashions from the metropolitan centers.
An unusually attractive line from the famous makers

SCHLOSS BROS. & CO.
BALTIMORE and NEW YORK

NEW SPRING SUITS, both in Young Men's and Conservative Styles, alike showing a class of materials, design and tailoring seldom seen except in the most expensive stores. These are far superior to any other Ready-to-Wear Clothes on the market, yet they cost no more than the ordinary. There is an immense variety to choose from, both as regards cloth, pattern and style of model, thus ensuring distinction and satisfaction to the wearer. We can perfectly fit anyone.

Get Your Entire Spring Outfit Here

In addition to our splendid lines of Suits and Overcoats, we have probably the finest selection of appropriate Furnishings and the like, to be found anywhere. Everything that you will want is here. We have literally searched the markets of the country to bring you the best

of everything. Our lines of Shirts and Ties, for example, embodies all new colors, designs and shades that will be worn this Spring on Broadway. You can get everything you need, at moderate price, here in the one store and know it is the latest thing, absolutely correct in style.

PARKER & REESE



<u>Furnishings</u>	<u>Hostery</u>	<u>Shirts</u>	<u>Hats</u>	<u>Neckwear</u>	<u>Underwear</u>	<u>Shoes</u>	<u>Gloves</u>
--------------------	----------------	---------------	-------------	-----------------	------------------	--------------	---------------

The Press and Banner.

Published every Wednesday at two dollars a year in advance.

Wednesday, March 20, 1912

TREASURY DEPARTMENT, Office of the Supervising Architect, Washington, D. C. March 8, 1912.—Sealed proposals will be received in this office until 8 o'clock p. m. on the 19th day of April, 1912, and then opened, for the construction (including plumbing, gas piping, heating apparatus, electric conduits and wiring, and interior lighting fixtures) for the United States post office at Abbeville, S. C., in accordance with drawings and specifications, copies of which may be obtained from the custodian of site at Abbeville, S. C., or at this office, at the discretion of the Supervising Architect.

The building is two stories in height; of approximately 3,550 square feet ground area; brick faced with stone trim; tin roof, and nonfireproof construction with the exception of the first floor.
James Knox Taylor,
Supervising Architect.

Notice.

The annual meeting of the stockholders of the Peoples Savings Bank will be held in the office of the bank Tuesday, April 2nd, 12 o'clock.
R. E. Cox, Cashier.

For Sale.

Keenan staple cotton seed, best staple cotton seed on the market. Produces as much per acre as any short cotton and brings 5 to 7 cents per bushel more. Price \$1.25 per bushel. Also Columbia and Rutland staple cotton seed at \$1.00 per bushel.
G. L. Connor, Colesbury, S. C.
Mar. 6. 11

Honor Roll of the Fonville School.

Teacher Miss Estelle Strickle.
Maggie Eilaath Reid.
Sudie White Ferguson.
Daisy Lee Ferguson.
Lucy Sarah Price.
Clifton Coleman Price.

Bonding Companies' Check For \$11,420

Chronicle Bureau,
Joe Sparks, Mgr.
Columbia, S. C., March 15.—Attorney General Lyon tonight received a check for \$11,420 from the American Bonding Company, of Baltimore, for the shortage found against James F. Detyens, former treasurer of Georgetown county, who was found short in his accounts to the extent of \$9,647. Detyens was under a bond of \$25,000.

We wonder if the persons who are trying to get Col. F. S. Evans to run for congress really hate him or are using him to pull out the chestnuts for themselves two years hence?

No musical play in the last ten years has attained the popularity accorded "Buster Brown." The famous little chap and his big company, including numerous pretty girls, will be here soon.

"Buster Brown" will be here soon. Millions have seen the stage representation of Outcault's tiny hero, but the crowds flock just the same. The date will be shortly announced.

Chas. Udell and Beth Kaufman, two unique entertainers, are members of the big "Buster Brown" Company, which will appear here soon.

THE AMERICAN LEPROSY

The trial of a young man in Virginia, charged with killing his wife, has filled the papers with much that is unsavory; and testimony has an injurious effect upon public morals. There is much that could be said along this line, but we should remember that such trials simply uncover, they do not produce, social conditions. They turn on the light and light is healthful. There are certain social evils, which are corrupting the very sources of life, but which never come to the surface even for a moment, except in such revelations as that which has come in this Virginia trial. But whether good or evil comes of these revelations depends, at last, wholly upon the moral judgments the community pronounces upon them.

There was one feature in the testimony of the mother of the unfortunate young wife, which, we think, the public cannot afford to let pass unnoticed. It points to an evil about which too little is said; and about which too little is known by the public. This silence and ignorance would be excusable if the evil lurked only in vile districts of the city and did not endanger the purest of the most innocent homes. And the ignorance and silence could be the better justified if only a few homes were endangered. But such is not the case. The dispatches which gave the account of the testimony of the heart-broken mother simply say: "Prosecutor Wendeburg questioned the woman as to her knowledge of the domestic life of the Beatties and brought to the surface a point intended as relevant to the alleged motive of the murder, namely, that Beattie's physical condition, due to dissipation, had caused much unhappiness to his wife."

In these veiled words reference is made to a disease and an evil the extent of which, if we are to believe the testimony of the whole medical profession, is certainly appalling. In conversation with physicians recently we were amazed beyond all measure to be told that by the very lowest estimate eighty-five per cent, of the men folk of this country are or have been contaminated; and some physicians think that ninety-five per cent, is nearer the truth. If the effects of these horrible diseases were confined wholly to the guilty they would be even then too awful to contemplate; but we are dealing with an evil that can be transmitted in its loathsome ness to a man's innocent offspring. Who can think of such a thing without a shudder? But by far the most astounding thing we learned in our conversation with the physicians—it is almost unbelievable—is that the profession estimates that about eighty-five per cent, of the surgical operations on the innocent wives of America has been caused by this unnamable evil!

And what is being done to protect society and the home that is to be, the young bride and the unborn children? The answer is, nothing, absolutely nothing in many States. What can be done? Much in every way. Above all, the best of the double standard. But also the State should refuse to issue a marriage license to a man who is liable to it than a rotting leper.

Skillful Ancient Cooks.
The cooks of the ancients were artists in their way and were so skillful that they could serve a whole pig boiled on one side and roasted on the other.

Save money by having your shoes repaired when they need it.
Brown & Percival.

Example of the Real Man.
The real man is the one who always finds excuses for others, but never excuses himself.—Henry Ward Beecher.

For Sale

300 Acres of land about 8 miles from Abbeville, on Rural Route No. 4. One two-story dwelling, one tenant house, plenty of wood and saw timber, well watered. Price \$5,000.

3 Houses and Lots in the City of Abbeville near the R. R. Shops. Prices low and terms easy.

311 Acres of land situated about half way between Troy and McCormick, a fine cotton farm, well watered and one settlement. Fine mineral deposits on this property. Price \$4,000.

570 Acres of land about 8 miles from Abbeville, has 3 tenant houses. 300 acres wood land, is well watered. Price \$10 per acre.

511 Acres of land 4 1-2 miles south of Ware's Shoals on Saluda river; 3 dwellings and 3 tenant houses, 75 acres wood land, 75 acres bottom land, good pasture, 7 horse farm open on the place. It is now rented for 3,600 lbs. lint cotton. Can be easily made to bring double this rent. Price \$12.50 per acre.

One Lot on corner of Orange and Lemon Streets, beautifully located level and well drained, \$500.

Two Lots near Wardlaw Street, two minutes walk from Graded School; near in, and a bargain at \$500 each.

List your Real Estate with me and come to see me. If you want to buy I have can get what you want. If you want to sell I can find you a buyer I also buy and sell all kinds of

Stocks and Bonds.

Remember I represent the Equitable, the strongest Life Insurance Company in the world.

Robt. S. Link
Office over Milford's Book Store.

Come and see the Shoe repairing machine. It is doing nice work while you wait.
Brown & Percival.

ROUND TRIP WINTER TOURIST FARES

Now in Effect via Southern Railway—
"Premier Carrier of the South."

Tickets on sale daily including April 30, 1912, with final limit returning May 31, 1912. For complete information as to schedules, sleeping car service, etc., call on nearest Southern Railway ticket agent, or J. L. Meek, A. G. P. A., Atlanta, Ga., F. L. Jenkins, T. P. A., Augusta, Ga.

DR. KING'S NEW LIFE PILLS
The Pills That Do Cure.

SPLENDID SERVICE

.... TO

New York, Philadelphia, Baltimore, Washington, and the East

NOW OFFERED BY THE

SEABOARD AIR LINE RAILWAY

Schedules

	No. 82	No. 88
Leave Abbeville.....	6.08 p.m.	2.08 a.m.
Arrive Richmond.....	7.22 a.m.	5.05 p.m.
" Washington.....	10.17 a.m.	8.35 p.m.
" Baltimore.....	12.14 a.m.	10.00 p.m.
" Philadelphia.....	2.23 p.m.	1.04 a.m.
" New York.....	4.40 p.m.	3.50 a.m.

All trains carry through Steel Electric-lighted Pullman Drawing-Room Sleepers, which now enter the new Pennsylvania Railroad Station (in the heart of New York City).

No. 82, "The Atlanta-Birmingham Special," carries a through Observation Car, Birmingham to New York.

All trains en route serve meals in dining cars—service a la carte. Any agent of the Seaboard can furnish information as to schedules, rates, etc.

C. D. WAYNE,
Assistant General Passenger

Foley's Kidney Pills

What They Will Do for You

They will cure your backache, strengthen your kidneys, correct urinary irregularities, build up the worn out tissues, and eliminate the excess uric acid that causes rheumatism. Prevent Bright's Disease and Diabates, and restore health and strength. Refuse substitutes.
C. A. MILFORD & CO.

A COLD, LA GRIPPE, THEN PNEUMONIA is too often the fatal sequence, and coughs that hang on weaken the system and lower the vital resistance. Foley's Honey and Tar Compound is a reliable medicine that stops the cough promptly by healing the cause; soothes the inflamed air passages, and checks the cold. Keep always on hand. Refuse substitutes. McMurray Drug Co.

The "Child's Welfare" movement has challenged the attention of thoughtful people everywhere. Mothers are natural supporters, and will find in Foley's Honey and Tar Compound a most valuable aid. Coughs and colds that unchecked lead to croup, bronchitis and pneumonia yield quickly to the healing and soothing qualities of Foley's Honey and Tar Compound. McMurray Drug Co.

Make life more worth living by smoking a Speed's cinco.

An Itching Skin

is about the most troublesome thing there is. You know it if you've ever had any kind of skin trouble. But they all give way, disappear, every last one—every itchy, scaly, itching, eruptive kind of disease of the skin—when you treat them to a box of

HUNT'S CURE

well rubbed in. Nothing like it to make the skin healthy and smooth and free from sting, or itch or pain.

Price is 50 cents a Box and one box is guaranteed to cure any one case or you get your money back. Ask your druggist for Hunt's cure.

A. B. Richards-McHolme Co., Sherman, Texas.

SOLD BY

THE McMURRAY DRUG CO.
ABBEVILLE, S. C.

Schedule for Due West Railway.
Morning train leaves Due West at 10:30. Evening train leaves Due West at 4:30. These trains meet the morning and evening trains on the Southern at Donalds.
Passengers can go out from Due West on the evening freight train which leaves Due West at two o'clock.

SOUTHERN RAILWAY.

Premier Carrier of the South

Unexcelled Dining Car Service.
Through Pullman Sleeping Cars on all Through Trains
Convenient Schedules on all Local Trains
Arrival and Departure of Trains.

No. of Trains.
108 Leaves for Greenville and Columbia at 9:20 a. m.
112 Leaves for Greenville at 4:05 p. m.
114 Leaves for Columbia at 6:35 p. m.
109 Arrives from Columbia and Greenville at 11:10 a. m.
113 Arrives from Columbia at 5:20 p. m.
115 Arrives from Greenville at 7:55 p. m.

For full information as to rates, routes, etc., consult nearest Southern Railway Ticket Agent, for

F. L. JENKINS,
Travelling Passenger Agent,
Augusta, Ga.
J. L. MEEK,
Asst. Gen. Pass. Agent,
Atlanta, Ga.
W. E. MCGEE,
Division Pass. Agent,
Charleston S. C.

SCHOOL BOOKS

Tablets Pencils

Ink
General School Supplies.

Speed's Drug Store.

Not the Same.
"You seem to think it's pretty well settled," said Miss Passay, "that I'd marry him if he proposed." "Yes," promptly replied Miss Knox. "The idea! So you think a girl should be ready to say 'yes' to any man who asked her?" "No, I don't say that a 'girl' should."

After Radium.
The Mt. Painter field of South Australia is a wonderful place for the occurrence of rare minerals and a company has been recently formed to recover radium from the earth.

Reputation Carefully Kept.
On the island of Jersey the breeding of cattle is still systematically and carefully carried on. The authorities are particular that the island be kept immune from cattle diseases. Neither bovines nor hay and straw may land from the continent of Europe.

Explained.
Since little Paul wrote his composition on snow his mother hopes that he may be a poet. "I don't really know what snow is," he began, "but I think it may be air with clothes on."—Youth's Companion.