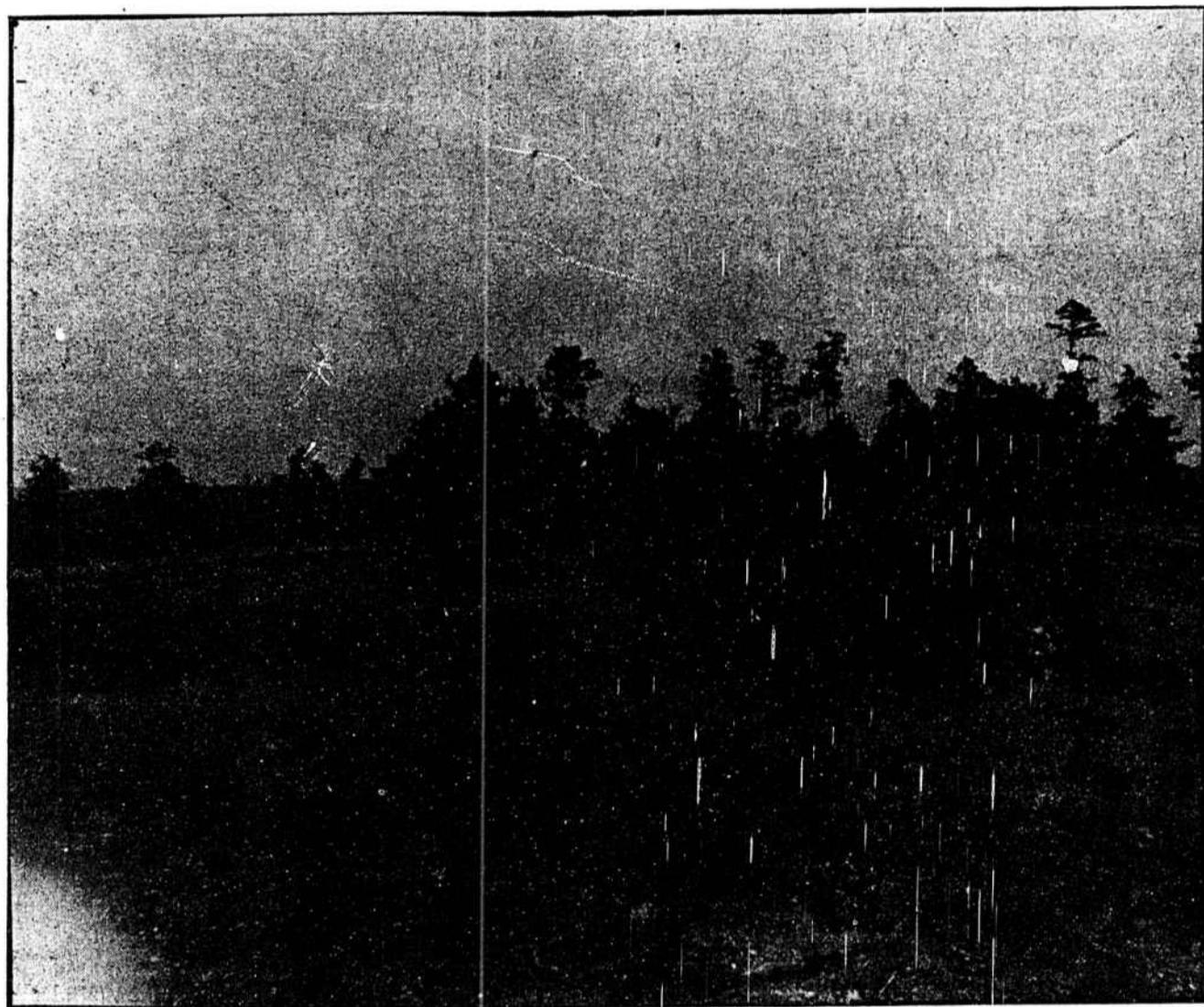


Peach Orchard of Hon. Wyatt Aiken, Robt. S. Link and Wm. M. Barnwell, located four miles from Abbeville, contains 3,000 Elberta trees five years old, will yeild approximately 3,000 crates this season.



Chert Bed Owned by Hon. Wyatt Aiken, Robt. S. Link and Wm. M. Barnwell.

This bed covers an area of about forty acres and is in unlimited quantities. The following letter from Mr. W. L. Spoon, Government expert road builder, will explain more clearly the qualities and usefulness of this Chert than any other description we might give of it:

United States Department of Agriculture,
Office of Public Road Inquiries, Washington, D. C.

Union, S. C., June 15th, 1905.

Mr. Robert S. Link, Abbeville, S. C.

Dear Sir: Your letter of the 24th ult., has just fallen into my hands. Expecting to soon return to Union I requested the postmaster to hold my mail for me until my return, hence your letter was held here waiting my return.

I hasten to reply thereto and beg to state that I think the railroad company first to reach that deposit of chert by a siding may consider itself extremely fortunate. The quality of that material for roads and streets is the very best. It will also make a most excellent ballast for railroads. Its location makes it easily quarried and easily loaded, hence cheaply. The quantity appears to be practically unlimited. Joining these facts together the inevitable conclusion follows that sooner or later its true value will be fully realized and extensively utilized for the purposes above enumerated.

Respecting the cost of construction of roads with such material it is much less than macadam, and with your outfit near the quarry you should be able to build a more durable road for \$1,000 per mile than the Jacksonville road which cost over \$5,000 per mile. The difference in quality being due to the difference in quality of material; the difference in cost being largely a matter of freight. The Jacksonville material came from Macon, Ga. Other things being equal, your material would be preferable at the same cost per mile.

Very truly yours,

W. L. Spoon.

Foley's Kidney Pills

What They Will Do for You

They will cure your backache, strengthen your kidneys, correct urinary irregularities, build up the worn out tissues, and eliminate the excess uric acid that causes rheumatism. Prevent Bright's Disease and Diabetics, and restore health and strength. Refuse substitutes.
C. A. MILFORD & CO.

Place your fire insurance with Abbeville Insurance and Trust Co. If the fire comes they give you prompt and satisfactory settlement. We represent fifteen of the largest companies.

We insure town or country property.
J. E. McDavid, Mgr.

James Frank Clinkscales,
Attorney and Counsellor at Law.
ABBEVILLE, S. C.
Office—First floor City Hall.

Money to Loan.

Money to loan at 7 per cent. on long time payments—three, five or ten years. Apply to
MOORE & MARS,
March 22, 1910. City Hall.

MANUFACTURED AND GUARANTEED BY CHIUOLA DRUG CO., ANDERSON, S. C.

For Sale by **C. A. Milford & Co., Abbeville, S. C.**
Price, 50c and \$1 per Bottle.

The Peoples Savings Bank. ABBEVILLE, S. C.

OFFICERS.

S. G. THOMSON, President.
G. A. NEUFFER, Vice-President.
R. E. COX, Cashier.

DIRECTORS.

S. G. Thomson, **H. G. Anderson**
G. A. Neuffer, **C. C. Gambrell,**
W. E. Owens, **F. B. Gary,**
J. S. Stark, **R. E. Cox,**
John A. Harris.

Abbeville County's Inducements

The territory surrounding and tributary to Abbeville is rich in agricultural and horticultural possibilities, abounding in alluvial meadows along the water courses that produce abundant crops of corn, while the fertile uplands is capable of producing as great a variety of crops as can be found any where—cotton, oats, wheat, hay, potatoes, melons, sugar cane, etc.; Abbeville County offers inducements to vegetable growers which can be found in no other section of the State. South Carolina has always been known as a fine State agriculturally, and yet some of her strongest adherents have been afraid to tell of the wonderful results which open air, and intensive farming have accomplished here. Farms in Abbeville County of from five to twenty-five acres, cultivated in the proper way, will yield double in proportion the net profit, that five hundred acres will in another portion of the South cultivated in the ordinary slip-shod fashion.

To the agriculturist and horticulturist, does this county offer substantial rewards. On the soils of this county, nature has bestowed with a lavish hand her choicest gifts and they yield up to man for the asking, as it were, all that is necessary to supply his wants—with small capital, combined with earnest and intelligent labor, one can soon accumulate a comfortable property by general farming alone. Well tried, and long experience has abundantly proven Abbeville County to be one of the best farming sections in the State.

Abbeville County has been among the foremost in agriculture for a number of years, and an entire failure has never been recorded in crop production; the tenant system is gradually giving away, and more diversified system of farming, with new methods are superceding the old. There are thousands of acres of most excellent farm lands in this County that can be bought for \$10, \$15 and \$20, per acre, on reasonable terms, and the purchase price may be taken from the soil in a very short time, if not by a single crop. Farming and trucking lands are cheaper in Abbeville County by one-third, than they are in adjoining counties. The farmer can make a bale of cotton to the acre on land that costs him \$10 or \$20, how is it possible for the industrious and intelligent farmer to fail to get rich? A bale of cotton is worth \$60 or \$70. The seed from the same bale may be worth from \$10 to \$12. The seed from a single bale being sufficient to pay for the acre on which the \$60 or \$70 bale of lint cotton was grown.

Corn properly cultivated will yield from 40 to 60 bushels, and there are lands in abundance in Abbeville County that will make 100 bushels per acre. Alfalfa grows well in this county and a conservative estimate of the cost of fertilizer and labor to produce two tons hay per acre is \$20. Sorghum cane grows to perfection in Abbeville County. Two crops of white or Irish potatoes may be grown every year on the same land.

Sweet potatoes are a favorite crop on every farm, and in every garden. Turnips grow in the greatest profusion, feeding man and beasts.

Oats is one of our standard crops. Tons and tons of pea vine hay feed our stock while the roots of the leguminous plant enriches the soil from which it grows.

Vetch is at home in Abbeville County. Our lands are well drained, while the purest and the best of life-giving or health-restoring water flows from every spring at the foot of nearly every hill.

In Abbeville County we have no swamps; we have no undrained lands; we have no malaria; we have no stagnant water; we have no sluggish streams; we have no storms or pestilence. The waters of our rivers is as pure and as sparkling as when it left the Blue Ridge. Our winters are so mild that we have ice and frost only a few nights during the cold season. In the light of above conditions, we invite intelligent, thrifty and painstaking home-seekers, farmers, truckers and stock raisers from our neighboring States, or other States of the Union; the intelligent and well meaning man need have no fear or doubts of success if he does his part fairly, honestly and with determination to succeed. The man who comes to Abbeville County to make his home finds first a warm welcome, heartily and sincerely given by people hospitable and kind-hearted; he finds that he can buy land cheap, for less than he can buy land for in the East or Northwest; he finds an ideal climate throughout the whole year; a climate that enables him to be growing a crop on his land the entire twelve months in the year; the climate that often restores to perfect health many who have fled from the snow and ice, hoping to live only a few months; a climate that permits him to grow practically anything that can be grown in the South, save the purely tropical fruits; he finds the people a people facing the future with a confident air, resting absolutely assured of their steadily increasing success. He finds educational advantages for his children, free public schools; he finds a diversity and multiplicity of opportunities that is not found elsewhere.

To the thousands of readers of this issue we again invite you to come to our County and investigate for yourselves the many advantages and opportunities we have to offer you. The man who is considering the advisability of coming to Abbeville County, South Carolina, and who would prefer to do general farming may rest assured that there is no place in the South where better opportunities are offered to those who prefer to do general farming, rather than engage in the growing of any one commodity; any of the general farm products are grown to a great advantage.
C. H. L.