

The Abbeville Press and Banner

By W. W. & W. R. Bradley.

ABBEVILLE, S. C., WEDNESDAY, MAY 11, 1910.

Established 1844

Abbeville and Abbeville County

DESCRIPTIVE OF AND ILLUSTRATING THE MANY ADVANTAGES OF THE CITY AS A COMMERCIAL AND MANUFACTURING CENTER

A PROFITABLE FIELD FOR BUSINESS ENTERPRISES AND THE INVESTMENT OF CAPITAL

Its High Altitude and Fine Climatic Conditions. A City of Excellent Schools, Fine Churches

Beautiful Homes, of Civic Pride, and the Social Virtues

ABBEVILLE

It is not our province to discuss particularly the events that go to make up an accurate history of Abbeville since its settlement. Suffice it to say, that the pioneers served God, fought the Indians, destroyed the wild beasts, conquered the wilderness, cultivated the land, and transmitted their best qualities

until the present population is estimated between 6,000 and 6,500. Its attitude is 900 feet above sea level.

Abbeville is emphatically a business city. It has three banks, whose combined deposits amount to \$454,563, and no city of its size has such enterprising merchants or offers greater bargains to buyers.

MANUFACTURING ADVANTAGES

The necessary elements entering into a place as a manufacturing center are; advantageous location, abundant transportation, various abundant, raw materials, situated

the year with the operation of manufactures, and enables, the workman to attain his highest ability throughout the entire twelve months.

A SPLENDID PRESENT AND FUTURE

To summarize all facts pertaining to general conditions existing in Abbeville at this time, and the brilliant outlook for the city's future it can be truthfully stated that realty values are more stable trade condition in all lines more satisfactory, and general prosperity more evident than at any time since the city's birth.

CLIMATE.

Abbeville lies near 34 degrees North Latitude, Midway between 82 and 83 West Longitude in the Piedmont section between the co-

and freedom from outlying swamps with their accompanying decaying substances make malaria almost an unknown disease, typhoid fever occurs only sporadically. Persons suffering from Asthma and Hay Fever show marked improvement in their condition after a short residence. Scattered throughout the country are many springs of ever flowing water which have unusual medical properties especially in the treatment of kidney diseases and their kindred ailments.

With wisdom that is not usually displayed in the building of a town, the first resident of the place left standing many of the original forest trees, and since many others such as willow oaks, palmetto and maple trees have been set out on the streets, the result is that Abbeville is finely shaded and delightfully cool in the summer.

BANKING AND FINANCE

The foundation of all industrial and commercial prosperity is a sound banking system, evidently

ABBEVILLE'S BUSINESS MEN

Generally speaking the business men of this little city are young and ambitious; they are willing at all times to entertain any proposition that has for its purpose the betterment and upbuilding of the city. They extend a hearty welcome to all new comers who are worthy of their consideration. They are progressive and conservative, and are careful to do nothing that would in any way reflect upon the fair name of the city. This care and diligence is reflected in the substantial and continuous increase in the volume of the cities traffic. Abbeville is growing rapidly and judicious action is very essential. The city is one of the best governed municipalities in the state and is continually being pointed out as an example of what can be done when selfish political interests are sacrificed in favor of the general good of the community.

ABBEVILLE POSTOFFICE

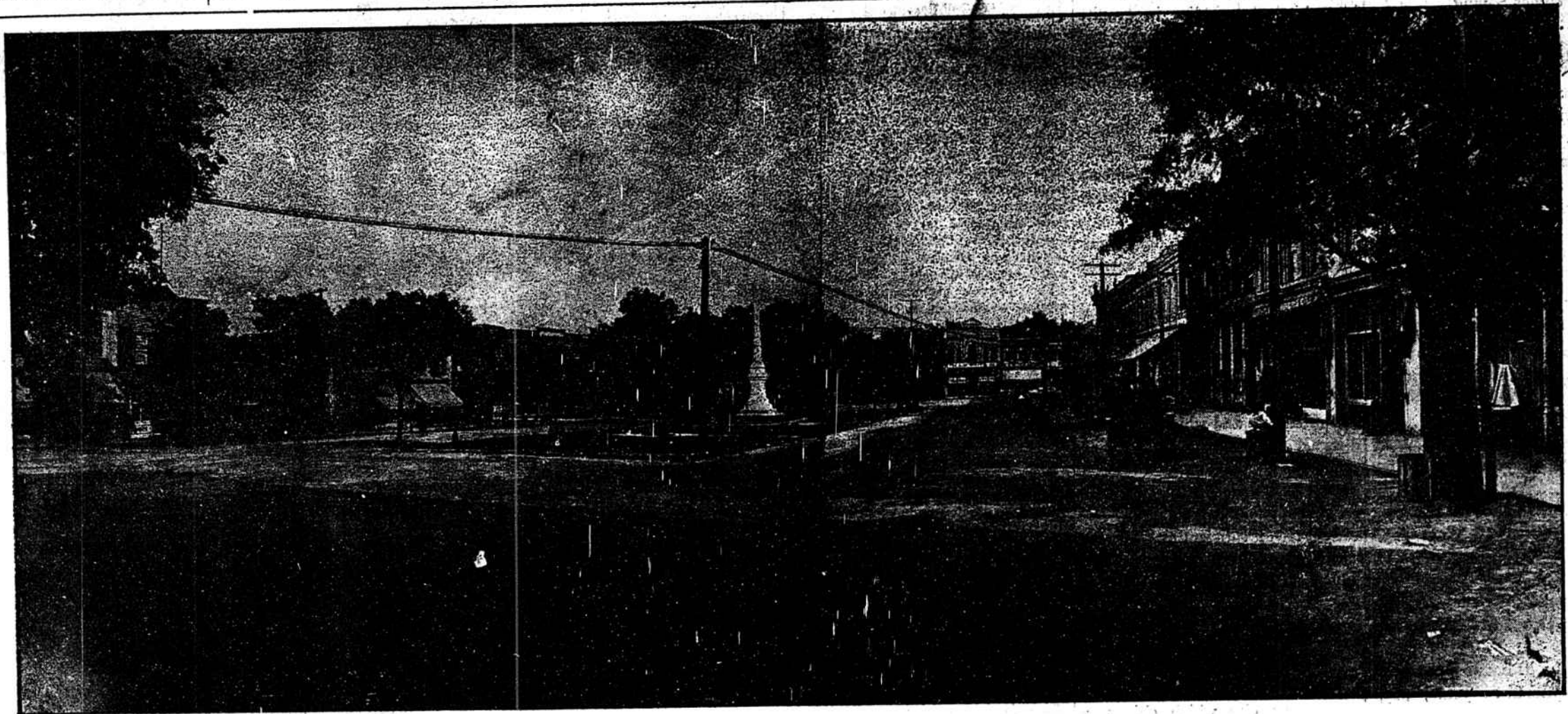
Abbeville's post office for the past many years shows a large increase in receipts. This reflects a steady prominent growth with boom features of every nature entirely eliminated.

1st. 1910, out of which there were 551 convictions. Fines paid during the year amounted to \$2,390.00. The majority of the offenses committed against the law in Abbeville are of a petty nature. The confirmed evildoer gives the city a wide berth, well knowing that a short sojourn in its limits would lead to his detection by the faithful men on the force.

REAL ESTATE OPPORTUNITIES

Real Estate men are doing more business and there is a greater demand from the outside for our property than ever before. This is not a boom, but a substantial growth and development that inevitable follows advantages that Abbeville enjoys. Business location and residence property have enhanced from ten to twenty percent according to the location of the property. Business property in Abbeville can be bought for \$40.00 to \$50.00 front foot. Residence property for \$10.00 to \$20.00 front foot. It is a proverbial fact that Abbeville real estate never decreases and all indications show that Abbeville property will double its present value in a year or so.

In the city many modern im-



Abbeville Public Square

to their children, as pioneers have done in all new countries since the dawn of civilization. So in the outset of this issue of the Press and Banner it is better, in lieu of all profession, to state that is in no way a purpose to publish a work, but on the contrary, this edition is devoted to the inducements, advantages and opportunities Abbeville and Abbeville County have to offer the home-seeker, manufacturer and investor. The city is so admirably situated for manufacturing sites and so conveniently traversed by railroads, as well as so completely hemmed in by large and fertile agricultural sections, that it is most inviting to the home-seeker and to the manufacturer.

Abbeville is the county seat of Abbeville county, the county was formed in 1785.

The advent of the Abbeville Cotton Mill and Shops of the Seaboard Air Line Railway was the beginning of the busy town and it has grown steadily since that time

only twenty miles from Calhoun, Cherokee and Tretter Shoals on the Savannah River with adequate power to turn the wheels of thousands of manufacturing plants and come proximity of the great consuming markets of the Union.

These facts emphasize the importance of Abbeville as a place for successful and profitable manufacturing.

There are many lines of manufacture that could be carried on here with profit, and Abbeville is especially inviting for a chair factory, spoke and handle factory, knitting mill, canning factory, over-all factory, another cotton mill, another oil mill, a fertilizer factory. There are excellent and fine openings for a fertilizer factory, a canning factory and a knitting mill. Other inducements include an unlimited supply of water, reasonable price for labor, and a lack of friction between labor and capital Abbeville has all of these and more. It has a climate that does not interfere in any part of

stal plains and the Appalachian Mountains. This is an uplifted peneplain with hilltops rising to a nearly uniform level with here and there a monadnock standing above the general surface. Hence the streams sink their valleys between the peneplain causing perfect drainage on all sides. The general geological formation insures a climate that cannot be surpassed. A perfect sewage system insuring sanitary and hygienic conditions difficult to attain in less favored sections. A mean annual temperature of 60 degrees, with an altitude of 900 feet makes the climate equable and healthy, allowing outdoor life practically all the year round. Diminished barometric pressure and consequent rarefaction of the atmosphere increases the asepticity of freedom from pathogenic germs. The high altitude compensates for the influence of latitude, so that it is cool in summer with dry air, making an unusually attractive condition for tubercular people. Natural drainage

and honestly administered.

It has been said and said truly that the financiers of Abbeville and Abbeville County have at all times resisted the temptation to plunge into hazardous and questionable enterprises. Nevertheless there is abundant evidence of the liberal policy of the directors of their banking institution in the substantial growth of manufacturing and commercial interests. No speculation influence go to the swelling of the volume of the banking business of this community, neither do transactions of a speculative nature figure in our statements of weekly bank clearings, as published throughout the country in comparison with the clearing house statements from other cities.

Another feature of the banking system of Abbeville is their savings departments, their reports showing that they are all in the most prosperous condition. As promoters of economy and saving these features of our banks are most potent.

There are two clerks employed in the office here, whose wages are \$800, per annum. The receipts for 1909 were \$8,211.87, and the expenses of the office was \$2,981.68, leaving a surplus over operating expenses of \$5,230.19. During the year 8,543 money orders were issued, and 1,271 special delivery letters received. The increase of receipts for the year ending March, 31, 1910 over those for the previous year was \$738.

Five rural routes are served from this office. Congress has already made an appropriation of \$50,000 for a Federal Building and Abbeville will soon have a new post office the site for which has already been selected.

ABBEVILLE POLICE DEPARTMENT

The police department of Abbeville is a well organized, efficient body. There are four men on the force including the chief.

There were 658 arrests made during the fiscal year ending April

improvements have created a big demand for central property, thereby necessitating the town to expand and suburban property is accordingly of value, and there can be no misrepresentation when we say that real estate investments at prevailing prices are an excellent safe investment, either to the home-seeker or the capitalist.

Pre-eminent Advantages of Abbeville in Paragraph.

1. Advantages of location.
2. Splendid railroad communication.
3. Abundance of ground for manufacturing sites.
4. Good water and plenty of it.
5. Low taxes good public buildings.
6. Agreeable and comfortable social conditions, elevated domestic life, good churches, excellent public schools, first class hotels and cheap markets.
7. Solid banks, and with a few exceptions, public spirited business people, conscious of Abbeville's natural advantages, pulsating with pluck and verity, and imbued with confidence in the destined greatness of the city.
8. Cleanliness and sanitary conditions.

C. H. L.