

YOUR TOUR OF CLINTON MILLS

From Fibers to Fabric

This tour guide brochure will pictorially illustrate the transformation of cotton and synthetic fibers into cotton and cotton blend fabrics. In those areas where our equipment or processes differ significantly from one plant to another, the plant and operation have been more specifically identified.

Warehousing

Trained warehouse personnel handle over 49,187 bales of cotton and 12,657 cartons of synthetic fibers annually. All of the cotton used in the plants is purchased on the basis of rigid standards of quality, fiber fineness, color, staple length, and a host of other characteristics.

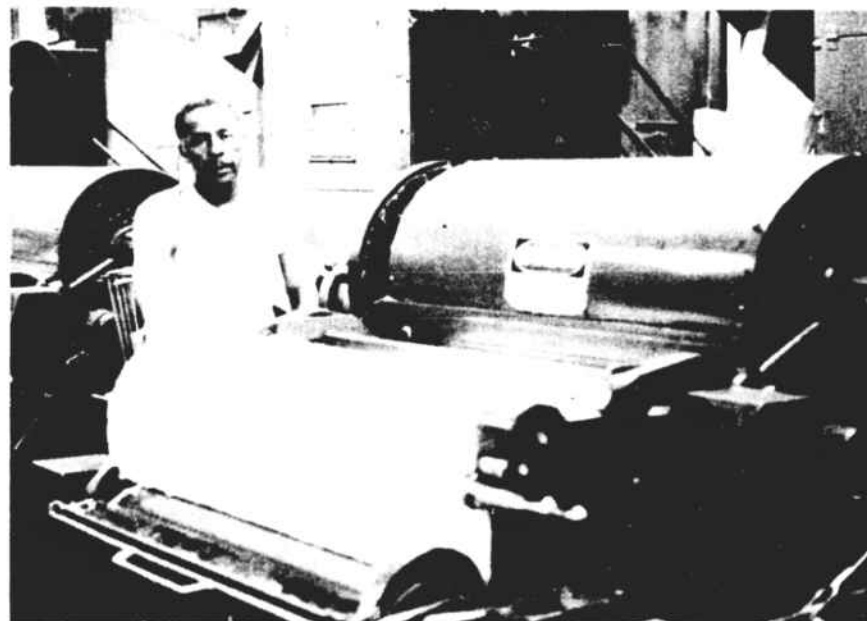


In the Card Room the fibers go through a series of processes. At **Bailey** and **Lydia**, employees move the fibers from the warehouse areas to the **Opening Room**. The bales are opened and placed behind opener hoppers. The opening process fluffs the fibers, and removes much of the foreign waste matter.

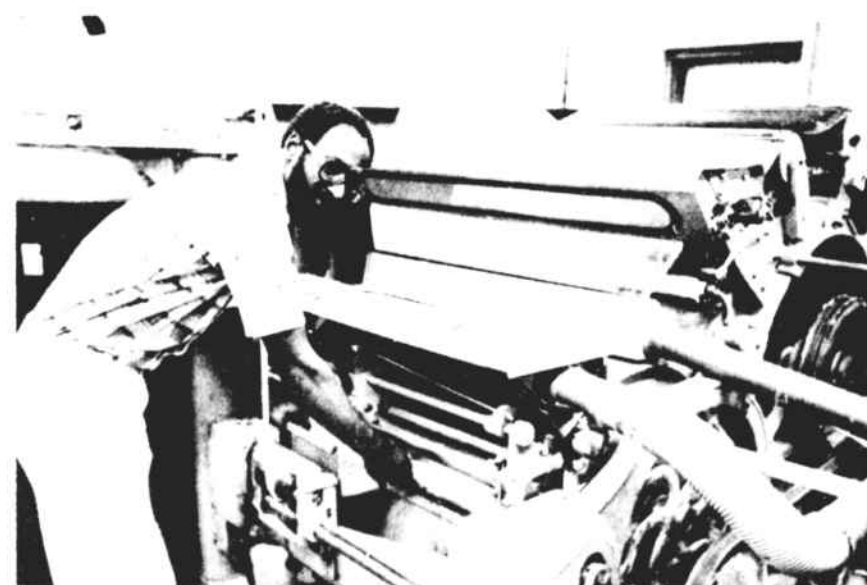


The **Bale-O-Matic** at Clinton No. 1 and No. 2 plucks the fibers from the bales and automatically feeds them into chutes which feed directly into the Cards. The **Picker** is eliminated in this process.

C A R D I N G



The **Pickers** at **Bailey** and **Lydia** "pick" the fibers apart as they pass through a series of rollers. The fibers are rolled into a roll called a **lap**.



Picker laps (**Bailey** and **Lydia**) are fed into the Cards where tiny wire teeth untangle the short fibers and remove waste matter. The fibers emerge as a soft rope called **sliver**.