

**EVENTS**

- ▶ Coca-Cola Culture Jam, Aug. 8, Meadowlake Park
- ▶ Greekfest Carolina, Aug. 22, Riverfront Park

# ETC.

**SITE OF THE DAY**

Alf, that loveable alien from Planet Melmac  
<http://www.icom.it/user/alf>

Wednesday, July 29, 1998

The Gamecock

Page 5

# DANIELLE HOWLE PREPARES FOR LILITH FAIR

staff writer TJ LYERLY

Columbia native Danielle Howle performed for a packed crowd at Courtyard Coffee House July 19 and July 20.

Last week's solo performances served two main purposes: to collect money to help pay for the trip for her upcoming dates at Lilith Fair in Houston and Austin and to record a new live CD.

Danielle Howle's last live solo CD was recorded at the McKissick Museum in January 1995, and she has added new material to her list of local hits since then.

Her performances with her band, the Tantrums, are entertaining in their own right, but her solo performances have an entirely different flavor.

While the chiming of the guitar and pounding of the rhythm section are the central ingredients in the

shows with her band, her words are the focal point in her solo performances.

Unlike the shows with the Tantrums, Howle has more freedom to cut up and go off on tangents. In the middle of a song it's not uncommon for her to stop playing and just let her thoughts diverge.

It's not necessarily the subject she is discussing, but her innocent child-like vocal inflections and impeccable sense of comic timing that can bring the crowd to a roar.

She muses about many of life's oddities, most of which we can all relate to, but occasionally she may get lost in a monologue.

Sometimes the way she says things, not what she says, is entertaining.

One such diversion led her to a discussion of sound wavelengths where she came to the realization that she was just a "number," referring to the amplitude of the wavelengths made by each note or key.

This "thinking out loud" is how

she maintains the attention of her audience.

Just as the audience's laughter dies down, she decides to play another song, often of a serious nature, such as about a failed relationship or unrequited feelings for another. She reminds us of the complexity of her nature.

In these shows, she introduced some "spoken word" pieces. Wednesday night she reminisced about the tree climbing in her youth, and Thursday, she gave her campaign speech as if she were running for "Office of Rock Star."

These spoken word performances, combined with songs she has written over the past 13 years and her

between-song banter, introduced many to her diverse talent, clever mind and her overall good nature.

She even burst into tears the first night.

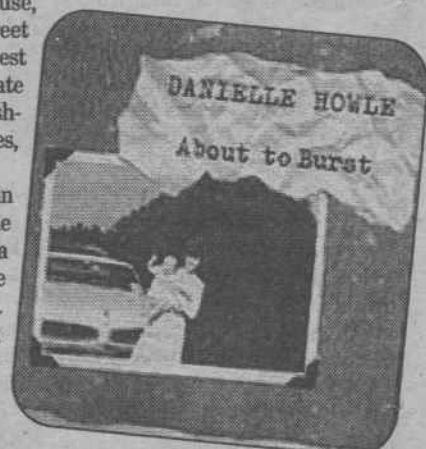
"Even if I don't get famous, it doesn't matter because I still have you guys," Howle said.

Danielle Howle will be playing at the Lilith Fair in Houston today.

The Courtyard Coffee House, just across the Gervais Street Bridge, was voted Columbia's Best Coffee House in 1998 by The State newspaper. The quaint establishment serves a variety of beverages, sandwiches and desserts.

Danielle Howle observed in one of her soliloquies, "No one should be allowed to eat in a restaurant unless they have worked in food services before. It's like serving in the military; everyone should have to pay their dues."

So if you go to the Courtyard, make sure you tip them well.



PHOTOS SPECIAL TO THE GAMECOCK

## CASH ADVANCE UNTIL PAYDAY!



**WE CASH YOUR PERSONAL CHECK and DEPOSIT YOUR CHECK on your NEXT PAYDAY**

New Customer Discount **50% OFF**  
 216-8646

Requirements for Service  
 • Valid Picture ID  
 • Verification of Income  
 • Current Checking Account Statement

**A-1 INSTANT CHECK ADVANCE**  
 Personal Check Cashing and Overdraft Protection

Monday-Friday 9-6 • 1624 Broad River Road, Suite 2, Columbia, SC 29210

## WESTSIDE WOMEN'S SERVICES

**BOARD CERTIFIED OB / GYN STAFF**  
 PERSONALIZED CONFIDENTIAL CARE IN A PRIVATE OFFICE

**Abortion Services & Gynecology**

- Pregnancy Testing • Ultra Sound
- Professional Counseling • Birth Control
- STD Testing • Abortions Up To 12 Wks.

**1-800-922-3730**  
**1-803-798-9299**  
 8 Diamond Lane, Columbia, S.C.

INTERSECTION CENTER & DIAMOND LANE  
 NEAR DUTCH SQUARE MALL  
 BROAD RIVER ROAD  
 INTERSECTION CENTER & DIAMOND LANE  
 I-26

Reserve FALL BOOKS

NOW!

No deposit required!



## Bookstore

**Has the LARGEST Selection of Used Books!**

"A Carolina Tradition Since 1961"

801 Main St. (Corner of Greene & Main) • Columbia, SC 29202

799-7406 799-7188 FAX (803) 799-5521

## OFF CAMPUS & CONVENIENT

- ▶ **Park Circle**—Studios, 1 & 2 Bedrooms
  - Ample Parking
  - Indoor Workout Room/Outdoor Jacuzzi
- ▶ **Plaza Center**—1 & 2 Bedrooms  
**Place on the Greene**—2 Bedrooms
  - Both located in Five Points
  - Each apartment has own parking
- ▶ Additional Rentals Available Near USC

**Deane Chavous, Realtors**  
 1600 Park Circle, Suite 106 • 256-3111