

Late run propels LSU to victory over Lady Gamecocks, 90-78

■ Kelly, Godfrey shine in Carolina's fourth-straight SEC loss.

RYAN WILSON Sports Editor

In most cases, basketball games are played with five players on each team, but the visiting Lady Tigers of Louisiana State needed just two players to beat the Lady Gamecocks 90-78 Saturday before a crowd of 1,014 at Frank McGuire Arena.

LSU's Cornelia Gayden, the SEC's leading scorer, finished with a career-high 46 points, while teammate Katina Smith scored 17 in the win.

"LSU got a tremendous game out of Gayden," USC coach Nancy Wilson said. "They also got a great individual performance from 40 (Smith) and their point guard played well in the second half."

The game started with LSU (4-9, 1-3) scoring the first four points, but a Natalie Funderburk three-pointer gave the Lady Gamecocks (7-6, 1-4) a 5-4 lead at 18:09 left in the half.

LSU answered with a 6-0 run, but USC came back and tied the game at 12 with 12:30 left in the half on a three by freshman Heather Godfrey. Godfrey tied the game at 17 on another three, but LSU answered with a three by Gayden with 10 minutes left in the half.

The next three minutes saw the Lady Gamecocks go on an 8-2 run, but the Lady Tigers capitalized at the free-throw line and managed to tie the game at 25. LSU started to gain some momentum with six minutes left in the half, but back-to-back three-pointers from USC freshman Audrey Ramsey gave USC a 33-29 lead, the Gamecocks' largest lead of the game.

Just like every earlier Carolina run, LSU had an answer. The Lady Tigers went on an 11-0 run, started by a Gayden trey, during which Caroli-

na went scoreless for two minutes. The Lady Gamecocks regained their composure, scoring the final seven points of the half to trail by one at 43-42.

The second half started off with Gayden hitting a three-pointer, but USC's Shannon Johnson answered with a three of her own to give USC its last lead of the game, 47-46, with 17:35 left to play. Less than a minute later, Johnson picked up her fourth foul and was benched by Wilson to keep from picking up her fifth.

In many cases, Johnson's absence from the court spells trouble for Carolina, but Godfrey stepped in and hit two crucial treys, the second of which tied the game at 60 with 12 minutes left.

"I thought they both (freshmen Godfrey and Ramsey) shot well when we needed the points," Wilson said. "They need to work on improving on the defensive end. I thought when Shannon went out, Heather was the one who could keep us in the game from outside."

Godfrey, a native of Statesville, N. C., believes she has begun to adjust to playing at the college level.

"I think I have adjusted well to playing at this level," Godfrey said. "The first few non-SEC games of the season helped a lot."

Louisiana State once again answered Carolina. The Lady Tigers went on a 17-7 run over the next five minutes, which ultimately finished the Lady Gamecocks. Johnson returned during this run, but she aggravated her knee injury from last season and left for the locker room with 7:29 left in the game.

"I thought we kept it within range, but we needed to recognize they were ready to play," Wilson said. "We didn't answer their competitiveness."

With Johnson out, USC went to Cindy Kelly, who quietly scored 22 points, in the post position and managed to get some free-throw opportunities.

Wilson said USC had the advantage in the post, and that with Johnson out, Kelly is the person to go to.

"I felt we were stronger in the post," Wilson said, "and when Shannon went out, we had to go to Cindy, especially since our outside people were off."

With 5:04 left, Ramsey hit a three to get Carolina to seven at 79-72, but the Lady Gamecocks could get no closer. Johnson returned from the locker room with 4:00 left, but by then the game was out of reach. LSU got its biggest lead, 15 points, with 20 seconds left. Christi Timmons hit a three-pointer to end the scoring.

"We are really disappointed," USC junior guard Natalie Funderburk said. "We feel we should have won this game. It gets frustrating as a player in a loss because you wonder if you could have done more."

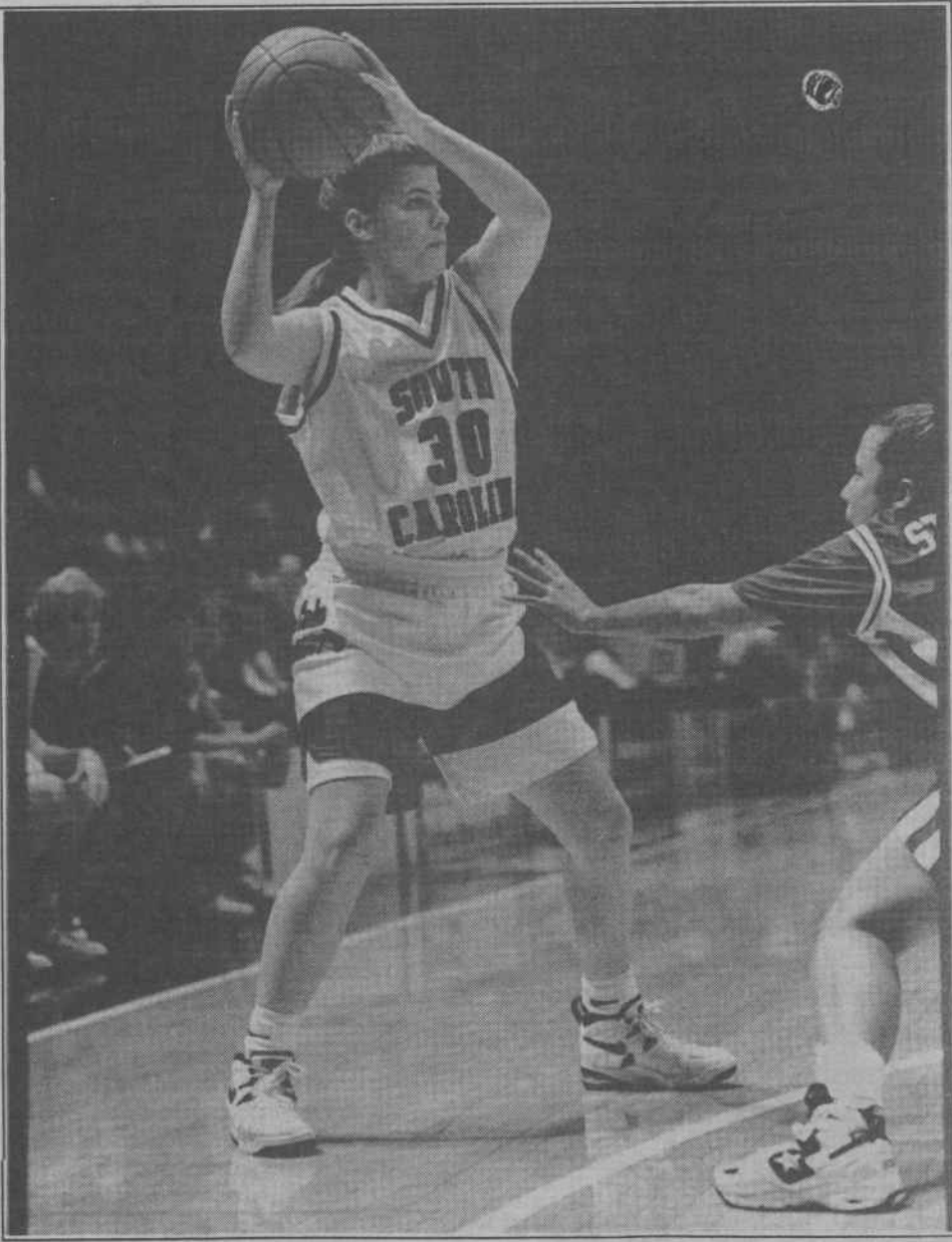
Overall, the key to the game was LSU's 49-34 rebounding advantage, 21 of which were on the offensive end.

"It (rebounding) won the game," Wilson. "You can't help a night when you're not shooting well. But if you're going to give the other team second and third chances and you're not shooting well, then that's the difference in the game."

The Lady Gamecocks' next game is Wednesday against East Tennessee State. The game, scheduled to start at 5 p.m., is the front end of a home doubleheader with the men playing Florida at 7:30 p.m.



KELLY



ROBERT WERTZ The Gamecock

USC freshman Heather Godfrey looks to pass the ball Saturday to a teammate in the Lady Gamecocks' 90-78 home loss to LSU. Godfrey finished with a career-high 12 points, all from behind the three-point line.

Gamecocks rolled over by Tide, drop fifth straight

JIMMY DeBUTTS Sports Editor

The South Carolina men's basketball team is 3-9 as the midpoint of the season rapidly approaches.

USC's losing streak was stretched to five games on Saturday as Carolina was dropped 91-59 by Alabama. The Gamecocks were held to under 60 points for the fourth straight time and seventh overall.

The Crimson Tide struck early and never looked back. Poor shooting once again hurt the Gamecocks. Carolina shot 32.8 percent from the field, connecting on just 21 of 64 shots.

"We were never a factor in the ballgame," USC Head Coach Eddie Fogler said. "It's obvious that Alabama is an extremely good team with a lot of great athletes."

South Carolina also struggled from the free throw line. As a team, the Gamecocks hit just 11 of 24 shots. Alabama hit nine of 11 free throw attempts.

Alabama shot 57.8 percent from the field and hit 8 of 24 three pointers. The Crimson Tide was led by Eric Washington's 17 points and eight rebounds. Jason Caffey and Antonio McDyeess also scored in double figures for Alabama.

Caffey scored 14 points, while McDyeess chipped in 18 points and a game high of nine rebounds. Alabama improved their

season record to 11-3, 2-1 SEC. The Crimson Tide avenged last year's 82-66 loss to the Gamecocks in Columbia.

"That (82-66 loss) was the low point of the season for us," Alabama Head Coach David Hobbs said. "We couldn't go any lower than that. That was a game most of us remembered."

Carolina was led by senior Andy Bostick and freshman Melvin Watson who scored 13 points apiece. Senior Carey Rich added 11 points for USC.

The Gamecocks have been led by the their backcourt starters thus far. Rich leads the team in scoring with a 13.6 average. He also leads the team in steals and free throw shooting.

Watson has been the only other Carolina player to consistently put up big numbers. He currently leads the Gamecocks with 40 assists and is the only other USC player averaging double figures in scoring. He is averaging 12.1 points per contest.

Malik Russell is averaging 9.8 points per game and is starting to play big inside. He scored a team high 18 points in the Gamecocks' loss to Kentucky and scored in double figures against the College of Charleston, South Carolina State, Providence and Mississippi State.

Russell leads the team in rebounding,

pulling down seven a game. Newcomers Ryan Stack and William Unsel also began to show their potential. Stack currently leads the team with eight blocked shots. He is chipping in 6.7 points per game coming off the bench.

Unsel is contributing 6.4 points per game coming off the bench. He scored 12 points in Carolina's win over the College of Charleston.

South Carolina's upcoming schedule does not give them any time to regroup. They host Florida on Jan. 18 at 7:30 and defending national champions Arkansas on Jan. 21 at 1:00, the game will be televised by Jefferson Pilot.

On Jan. 26 the Gamecocks take on Western Carolina at the Carolina Coliseum. After their game against the Catamounts, South Carolina will play seven consecutive SEC games.

Lack of depth has once again hurt Coach Fogler's team. With only nine players dressing out, the burden to execute falls on the upperclassmen. Rich, Russell and Bostick must lead the team if the Gamecocks are to improve.

Bostick has had a four point drop in his scoring average from last season. In 1993-94 Bostick put in 13.5 points per game, this season he is averaging 9.4 points per con-

USC vs ALABAMA

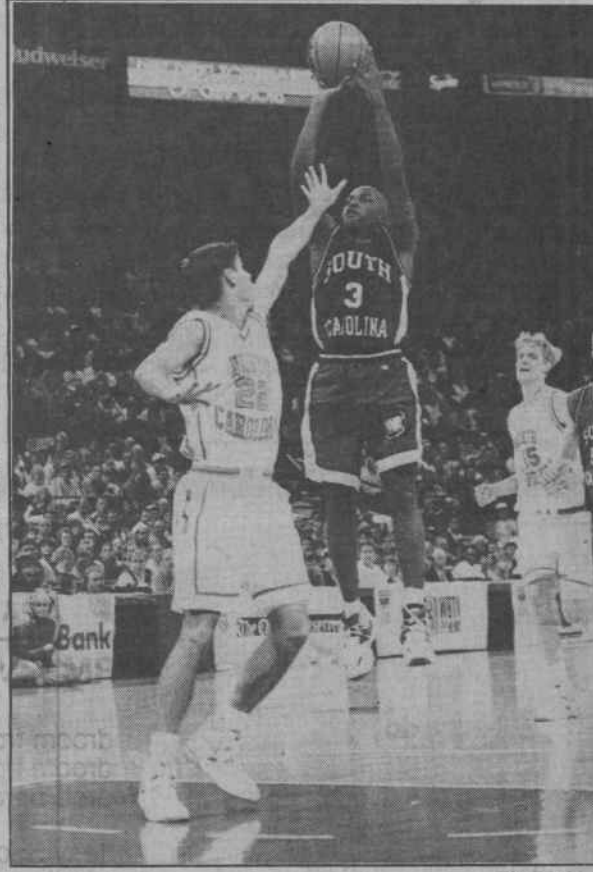
	MP	FG	FT	Rbs	A	F	Pts
Bostick	31	5-11	1-1	8	1	1	13
Russell	33	4-12	0-2	7	2	0	8
Rich	29	3-13	3-4	2	2	2	11
Watson	34	5-12	3-6	1	3	1	13
Stack	23	3-10	1-3	3	0	4	9

	MP	FG	FT	Rbs	A	F	Pts
Washgm	17	7-12	0-0	8	0	2	17
Caffey	23	7-10	0-1	5	0	2	14
Orange	18	1-5	0-0	1	4	2	3
Griffin	23	2-6	0-0	1	5	1	5
McDyeess	26	5-6	2-2	9	1	2	12

USC	31	28	59
Alabama	48	43	91

test. As a team, the Gamecocks are shooting poorly. They are only connecting on 40.4 percent of their shots from the field, while their opponents are hitting 45 percent.

It does not get better from the charity stripe for South Carolina. As a team they are making only 58.6 percent. Their opponents are hitting 72.5 percent of their free throw attempts.



Carey Rich and the Gamecocks are 0-4 in the SEC this season. USC's next game is Jan. 18 at home against Florida.

Let's Talk?

As a part of the Black History Month Observance on campus, students are encouraged to participate in small group discussions on race relations. You will meet with one other student, or in a group of four, to talk about why race continues to be an important issue on campus; the perceptions, stereotypes, or values that cause separation of the races; and how race relations can be improved. You will be asked to write a summary of your responses which will be used to plan the next phase of the project.

The discussions will be held January 30 to February 6. While you are encouraged to meet for lunch or dinner, any time and place convenient to students in your group will be appropriate.

To participate, complete the form below and turn it in to the Student Government Office by January 25. You will be notified of your partner(s). If more information is needed, call Smalls at 777-4155.

Name: _____

Address: _____

Telephone: Day: _____ Night: _____

Gender: _____ Race: _____

Classification: _____ (Freshman, Sophomore, Junior, Senior, Graduate Student)

Do you wish to meet with just one other person or in a group of four persons?
 One other person _____ Group of four _____

(Sponsored by the Black Faculty and Staff Association in cooperation with the Student Government Association)

Ski Gloves & Jackets 1/2 Price!



- Hiking boots
- Tents & packs
- Camping gear
- Levi's - Ladies & Mens
- Woolrich & Columbia Sportswear

Ladies' and Men's Cotton Turtlenecks
\$7

New Shipment Ski Bibs
\$19⁹⁵
 Ladies' & Men's

MOE LEVY'S

— Outfitters for over 70 years —

Two blocks from State Capitol
 Corner of Assembly and Lady

O'Neil near Cola Mall
 Open nites 'til 9

"Ooo, someone has been to SOAP'S," said Goldilocks, "These sheets feel so clean and smell so fresh." And she crawled into the baby bear's bed and fell fast asleep.

And then Later that same morning . . .

"Someone's been sleeping in my bed," said Poppa Bear obviously perturbed.

"Someone's been sleeping in my bed," said Momma Bear equally miffed.

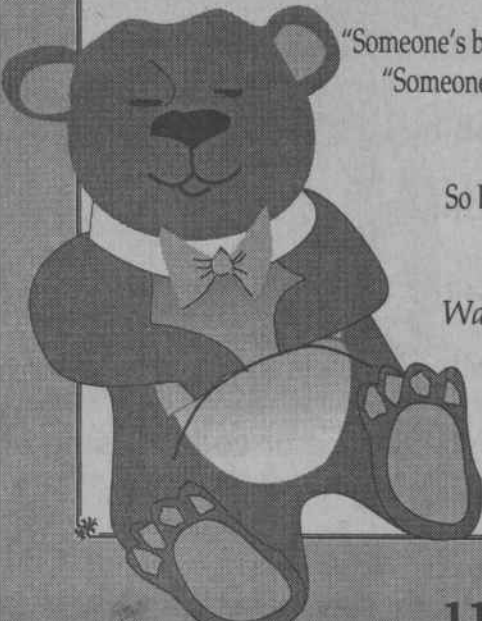
"Someone's still sleeping in my bed," said Baby Bear happily.

He was delighted to find a cute blonde in his bed.

So Baby Bear ate Goldilocks all up and slept contentedly all winter.

MORAL

Wash your sheets at SOAP'S. You might get lucky!



"GOODTIME LAUNDRY"

114 S. Assembly Street • 252-0005