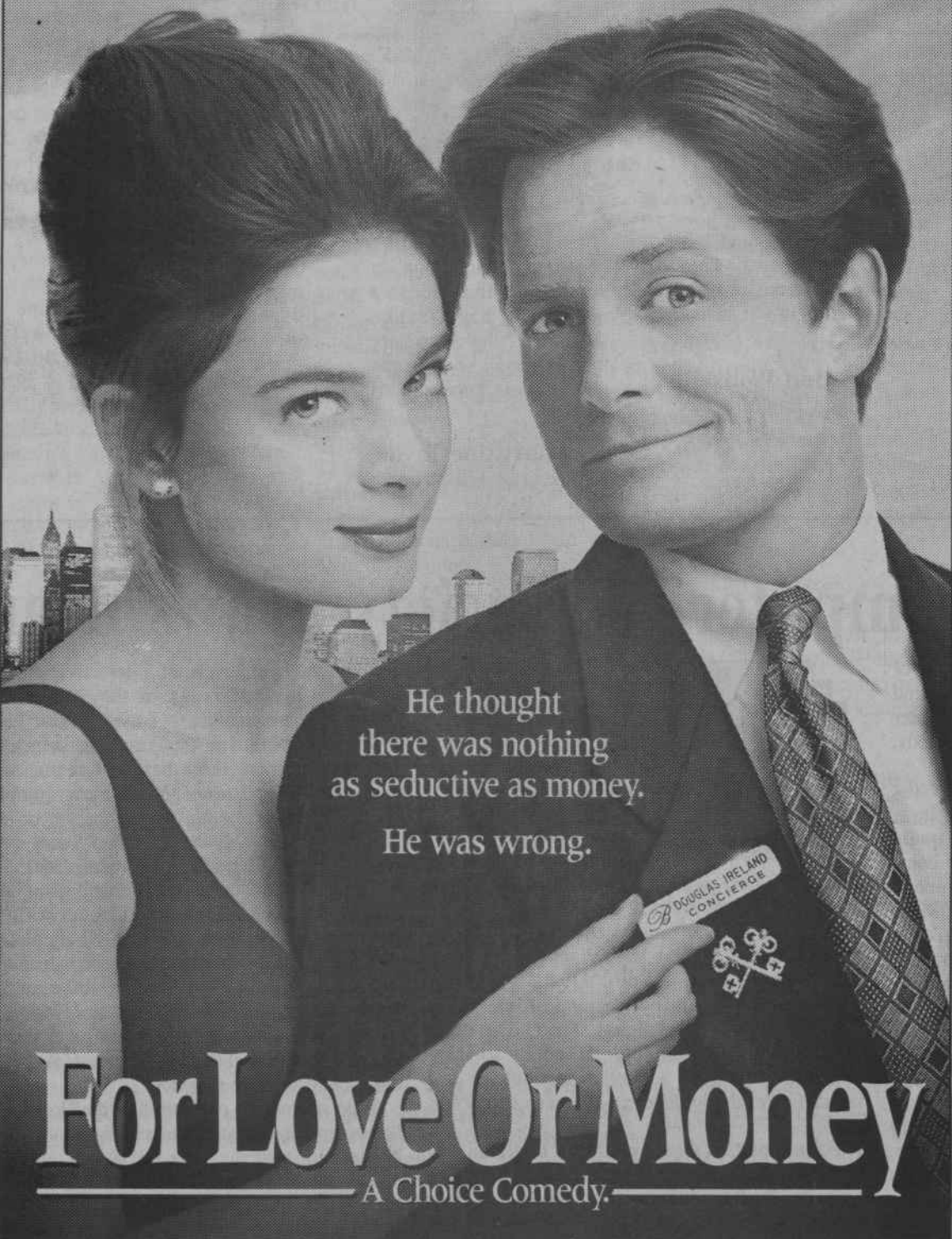


FROM THE DIRECTOR OF "THE ADDAMS FAMILY"

# Michael J. Fox



He thought there was nothing as seductive as money. He was wrong.

## For Love Or Money

A Choice Comedy.

IMAGINE FILMS ENTERTAINMENT PRESENTS A BRIAN GRAZER PRODUCTION A BARRY SONNENFELD FILM MICHAEL J. FOX "FOR LOVE OR MONEY" GABRIELLE ANWAR ANTHONY HIGGINS BOB BALABAN MICHAEL TUCKER MUSIC BY BRUCE BROUGHTON COSTUME DESIGNER SUSAN LYALL PRODUCED BY GRAHAM PLACE FILM EDITOR JIM MILLER PRODUCTION DESIGNER PETER LARKIN DIRECTOR OF PHOTOGRAPHY OLIVER WOOD WRITTEN BY MARK ROSENTHAL & LAWRENCE KONNER EXECUTIVE PRODUCERS DAVID T. FRIENDLY PRODUCED BY BRIAN GRAZER DIRECTED BY BARRY SONNENFELD

PG PARENTAL GUIDANCE SUGGESTED SOME MATERIAL MAY NOT BE SUITABLE FOR CHILDREN

OPENS OCTOBER 1ST A UNIVERSAL RELEASE UNIVERSAL

### A HERFF JONES DUET



It's An Offer That'll Rock You . . .



Order your Herff Jones college ring and we'll throw in a free performance by your favorite artist — on compact disc, of course.

**H** HERFF JONES

September 29 and 30  
USC Bookstore  
Russell House  
No deposit required.

With His Talent...



Think What He Might Have Accomplished If He Had Been In Co-op.

FOR DETAILS CONTACT:

The Student Employment Center  
USC Career Center  
6th Floor B.A. Bldg.  
or call 777-2124

### Does Your Deli:

- Use Cold Cuts that are Loaded with Fat, Fillers and Preservatives?
- Use Boar's Head Brand Premium Deli Meats and Cheeses, the Finest Available?
- Charge You Extra Just to "Have It Your Way?"
- Charge You For Refills On Fountain Drinks Or Tea?

...Just Asking



**FAT BELLY DELI**

We Are A Boar's Head Brand Program Delicatessen  
Coming Soon Late, Late Hours

620 Harden Street 254-DELI  
Next door to the Cycle Center in Five Points

### PRINCIPLES of SOUND RETIREMENT INVESTING



## IF YOU THOUGHT COLLEGE WAS EXPENSIVE, TRY PUTTING YOURSELF THROUGH RETIREMENT.

Think about supporting yourself for twenty-five, thirty years or longer in retirement. It might be the greatest financial test you'll ever face. Fortunately, you have one valuable asset in your favor. Time.

Time to take advantage of tax-deferral. Time for your money to grow.

But starting early is key. Consider this: if you begin saving just \$100 a month at age thirty, you can accumulate \$172,109\* by the time you reach age sixty-five. Wait ten years and you'd need to set aside \$219 a month to reach the same goal.

At TIAA-CREF, we not only understand the value of starting early, we can help make it possible—with flexible retirement and tax-deferred annuity plans, a diverse portfolio of investment choices, and a record of personal service that spans 75 years.

Over a million people in education and research are already enrolled in America's largest retirement system. Find out how easy it is to join them. Call today and learn how simple it is to put yourself through retirement when you have time and TIAA-CREF on your side.

Start planning your future. Call our Enrollment Hotline 1 800 842-2888.

**TIAA CREF**  
75 years of ensuring the future for those who shape it.™



\*Assuming an interest rate of 7.00% credited to TIAA Retirement Annuities. This rate is used solely to show the power and effect of compounding. Lower or higher rates would produce very different results. CREF certificates are distributed by TIAA-CREF Individual and Institutional Services.

We're Back!



SEASON PREMIERE TOMORROW!  
Watch us on Gamecock Cablevision  
Channel 10, Monday thru Friday  
5:00 PM until 9:30 PM

WCFG We're YOUR Television Station!



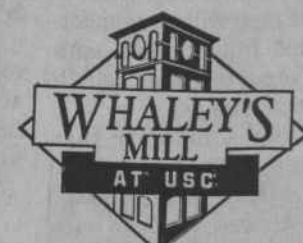
## Do You Sometimes Feel Like Off-Campus Housing Is Too Far Off Campus?

It just took over twenty minutes to drive to class. Now you have to spend a half-hour hunting for a parking place. You hope your professor won't start the exam without you.

You should move closer to campus... you could be living at Whaley's Mill. We offer off-campus apartments within walking distance from your classes. The Shuttlecock stops out front, and your favorite nightclubs are only a couple of blocks away.

Some might think the closer you are to campus the higher the price. But at Whaley's Mill we offer low student rates and special leases to upperclassmen and grad students.

At Whaley's Mill you can leave the traffic behind and even gain an extra hour's sleep.



Where home isn't far away

**HUFFMAN REYNOLDS & ASSOCIATES**  
Mon - Fri  
9:30 am - 5:30 pm  
254-7801