

# Summer movies sizzle and flop

## Movie Review



### Film Grades

- A+ Extraordinary; Masterpiece
- A Very Good
- B Entertaining; Worth the Money
- C Flawed; Lots of Reservations
- D Seriously Flawed; Not Recommended
- F Horrific; Disgustingly Bad

By DAVID BOWDEN  
Assistant Carolina Life Editor



Warren Beatty is *Dick Tracy*, one of the summer movies David Bowden will look at in a two-part series.

This is the first movie column of the fall semester, and it makes a certain amount of sense to take an overview of the summer's movies. I'll try to fit as many movies in as possible so the world will know exactly where I stand on the Summer Movie Issue (try to get that out of Judge Souter).

*Air America*: Stupid, preachy Vietnam-era flick. Robert Downey Jr. is a naive CIA pilot in Laos. Mel Gibson is his cynical gun-running friend who turns out to be a swell guy in the end (I think his character was named Han Solo). The movie gives new meaning to the term *predictable plot*. **D**

*Another 48 Hours*: Awful sequel to Eddie Murphy's first movie. Murphy's latest movie is stupid and misogynic, with a plot everyone has seen a thousand times before in a thousand better movies. Murphy has sunk so low he doesn't even look like he's trying to be funny. It's the worst movie of the summer. **F**

*Arachnophobia*: Great horror film, well directed by Frank Marshall and well-acted by Jeff Daniels and John Goodman (among others). I hate spiders so this film truly scared me. **A**

*Days of Thunder*: Some call this *Top Gun* on wheels, but *Thunder* is far better than that. The racing scenes are so good I forgot that this was supposed to be NASCAR.

Tom Cruise is great, but Robert Duvall steals the movie as the gruff but lovable pit crew chief. He should really get a best supporting actor nomination. **A**

*Dick Tracy*: Sorry, pretty sets and make-up are not the only components of a good movie. It was OK, but it creeps along very slowly to an unsatisfying ending. The visual style and Al Pacino's great acting salvage what would otherwise be average fare. **B**

*Die Hard II*: Well-done sequel to the classic original. Excellent special effects, but the plot is so totally preposterous that it distracted me. There is a difference between suspending belief (like in a sci-fi movie) and suspending the Laws of Physics. With that said, I still enjoyed the movie. Just think of it as a cartoon. **B+**

*Flatliners*: In a phrase, style over substance. This unimaginative look at the afterlife wastes the talents of lots of people. You know you're in trouble when real life is more surrealistic than the *Great Beyond*.

The main characters go to a medical school that is evidently inside the Gotham City Art Gallery. Why are there stone pillars and frescos in a hospital? That is one of many questions you'll be asking after you see this tripe. **D**

*Back to the Future III*: It was an entertaining end of the trilogy, better than the second installment, about the same as the first. Christopher Lloyd is always funny. Michael J. Fox, however, should start to worry that he still looks like a teenager. **B+**

# WUSC Top Ten

## Artist - Album

1. Reptile - *Frame and Fossils*
2. Dread Zeppelin - *Un-Led-Ed*
3. Pixies - *Bossanova*
4. Bob Wiseman - *In her dream*
5. Jane's Addiction - *Ritual de lo habitual*
6. (Ex) Cat Heads - *Our Frisco*
7. Uncle Tupelo - *No Depression*
8. Burning Spear - *Mek We Dweet*
9. 24-7 Spyz - *Gumbo Millennium*
10. Iggy Pop - *Brick by brick*

# Weekend

Continued from page 4

broadcast live. No cover before 9 p.m., \$3 after 9 p.m. and \$6 after 12 p.m.

**Pug's** - 634 Harden St. Both Friday and Saturday nights will be the "Grand Opening of Pugs II." T-shirts, cassettes, hats and VIP memberships will be raffled. USC cheerleaders will make an appearance Friday night. Cover charges are \$2 before 11 p.m. and \$3 after 11 p.m..

**The Punchline** - 628 Harden St. Tom Wilson will headline both Friday and Saturday nights at an \$8 cover charge, while Sunday night will feature James Gregory at \$12 cover. All performances are at 8 p.m. or 10:15 p.m..

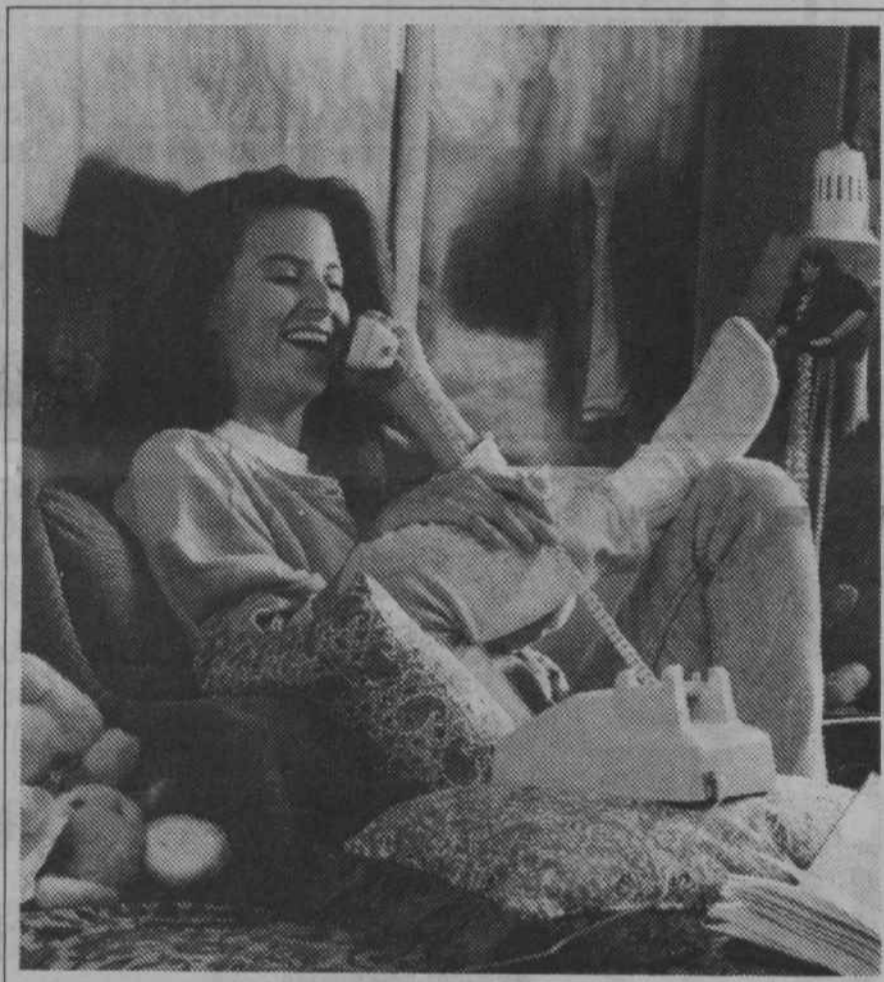
**Rockafella's** - 2112 Devine St. Heavy metal band, Eros, will play Friday night while Rude Doctor will perform Saturday night. Both shows start at 10:30 p.m. and cover charge is \$5.

Call The Gamecock at 777-7726

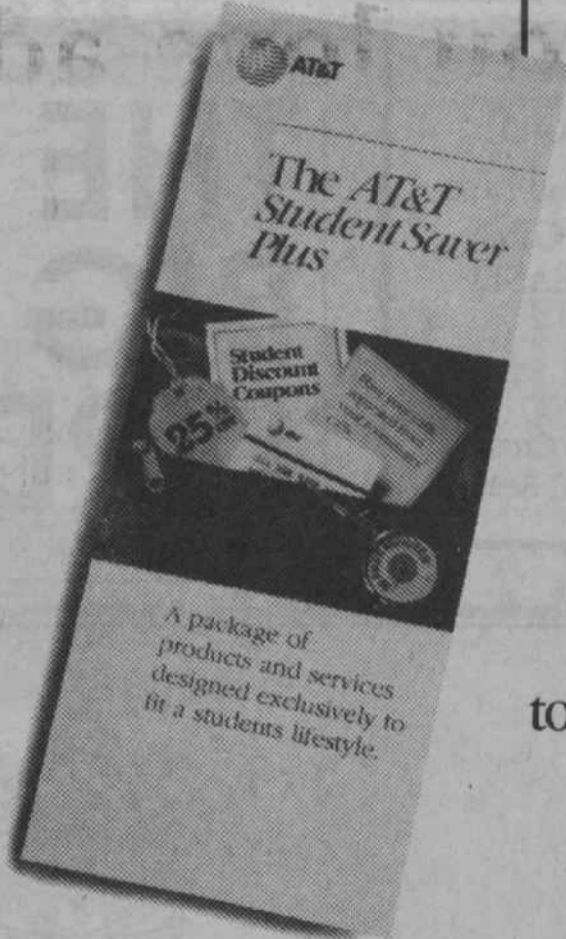
# This semester, take some electives in communications.

## Introducing AT&T Student Saver Plus.

This year it'll be easier to get through college. Because AT&T has put together a program of products and services that can save you money. Whether you live on or off campus.



Gabrielle Kreiser • Skidmore College • Class of 1991



You don't need to wait till spring to get a break.

With the AT&T *Reach Out America Plan*, you'll get savings 24 hours a day, 7 days a week. Including 25% off our already low evening prices.



Call from anywhere to anywhere.

We'll give you a free AT&T Calling Card, even if you don't have a phone. So you'll be able to make a call from almost any phone and have it billed to you, wherever you live.

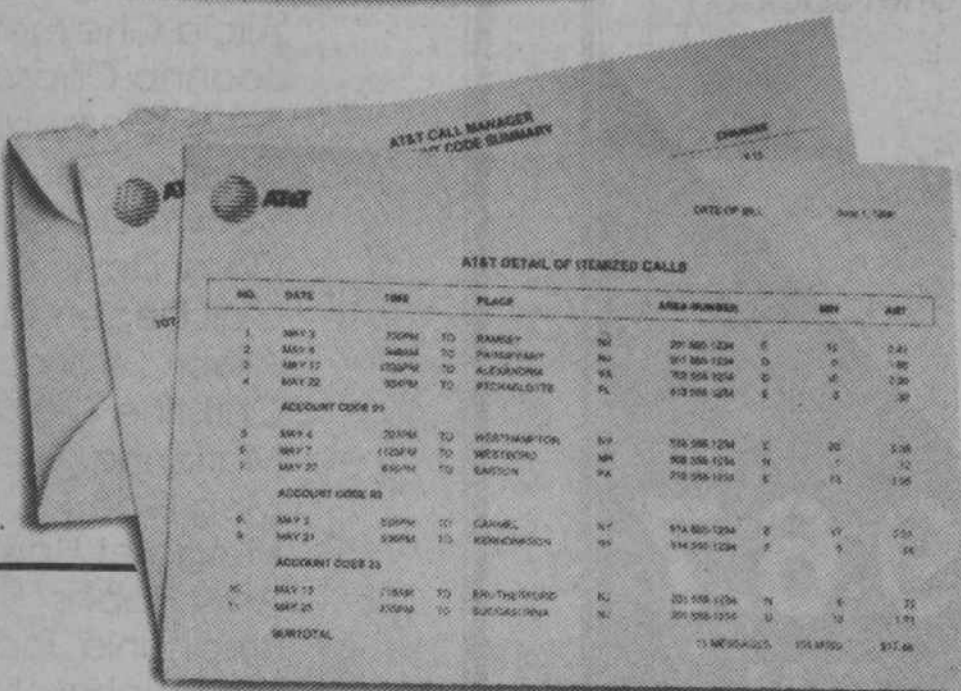
To enroll in the AT&T Student Saver Plus programs that are right for you, or to get the best value in long distance service, call us. They just might be the most profitable electives you'll ever take.

1 800 654-0471 Ext. 1230  
AT&T. Helping make college life a little easier.



## Keep your roommates in line.

We'll separate your long distance calls from your roommates' calls with AT&T *Call Manager*. And we'll do it for free.



\*This service may not be available in residence halls on your campus.  
\*\*Discount applies to out-of-state calls direct-dialed 5-10 pm, Sunday-Friday.  
© 1990 AT&T

Visit Sandy's USC location at the corner of College & Main

**SANDY'S** BBQ Sandwich \$1.99  
North Carolina-style barbecue Pork. Not a heavy mustard base! It's delicious!

Visit Sandy's USC location at the corner of College & Main

**SANDY'S** Chocolate Walnut sundae \$1.99  
Lots of rich vanilla ice cream, fancy strawberry topping with whipped cream and topped with a cherry!

Visit Sandy's USC location at the corner of College & Main

**SANDY'S** Chili cheese dog \$1.69  
1/4 lb. all-beef frank, served with mustard, secret recipe chili, onions and hot melted cheese!

Limit one. Good at any Sandy's. Coupon expires 9/4/90.