

# The Wagon Wheel

..... a spoke a week .....

By BOOTY WALL

FOREST LAKE WAS THE PLACE!!! 10:40, THE TIME and JAN. 15 was the DATE—with a full moon shining on the lake. Saturday night Bobby Sumwalt, SAE, president of the student body, relinquished his fraternity pin to Nell Cassidy, Tri-Delt pledge (as the old saying goes—she MUST have twisted his arm!!!) Others who were partying at the club that night were SAEs and their dates—or wives—Ralph Canine, Nancy Nash; Jim Barton, Lucy Whitescarver; Ginger Miller, Vivian Owens; Joe and Laura Lumpkin; Chuck and Betty Garnett; Cooper Smith, Betty Murphy; Mitch Graham and Dool Coskrey. . . . Phi Sigma Kappa fraternity and their dates journeyed out to the Hollywood Club Friday night for an informal dance . . .

IT'S PINS AND DIAPERS for Nita and Jay Hicks who are now the proud parents of a baby girl!!! Also Ginnane and Wally Doughty have an addition to the family—a little girl . . . Marriage for three ZTAs Colleen Morris, Penny Burbage, and Jackie Kimberly will take place the same day, January 30 . . . Penny will be married at 4 p. m. in Greenville, Jackie at 4:30 p. m. in Columbia and Colleen will speak the vows at 5 p. m. in Clemson. The chapter gave a coke party for them Monday night . . . KD alum Lillian Love (alias Nelly Lutzer) and ChiO Electa Hall will travel to that big city of Washington to ride in the South Carolina inaugural float.

It seems the elections pervaded over the campus atmosphere . . . Sigma Alpha Epsilon fraternity at their usual meeting Monday night elected active officers for the coming spring semester. Those who will serve for the coming semester are: Ralph Canine, Miami, Fla., president; Johnny James, Darlington, vice-president; Phil Pearce, Columbia, secretary; Jarre Davis, Atlanta, Ga., treasurer; Pete Wardlaw, Columbia, correspondent; Jim Parton, Greenville, Chronicle; Harry Gandy, Camden, warden; Tucker, Columbia, herald; J. P. Gamble, Greelyville, housemanager; Bill Goudebeck, Columbia, interfraternity council representative; Bob Kay, Greenville, German Club representative, and Charlie Penny, Columbia, rush chairman.

Pi Kappa Phi re-elected Dick Singleton president for the spring semester. Other officers are Doug Plowden, treasurer; Tommy Fulmer, secretary; Sam McKittrick, historian; John Jefferies, chaplain; and Jim Singleton, warden; Bill Bobo, interfraternity council representative, and Reese Daniel, German Club representative.

Officers of Sigma Nu fraternity are: Benjie Knowlton, president; George Shelor, vice-president; Wilson Springs, treasurer; Bobby Gaines, secretary; Louis Haigler, I.F.C. representative Bob Wilson, German club representative; Don Smith, chaplain; "Goop" Fishburne, historian, and Bob Tindall, house manager—by the way, Bayard Pickett was elected Powder Bowl representative for the fraternity . . . a nick-name was attached to this bit of news but the writer was asked to refrain from publicizing it . . .

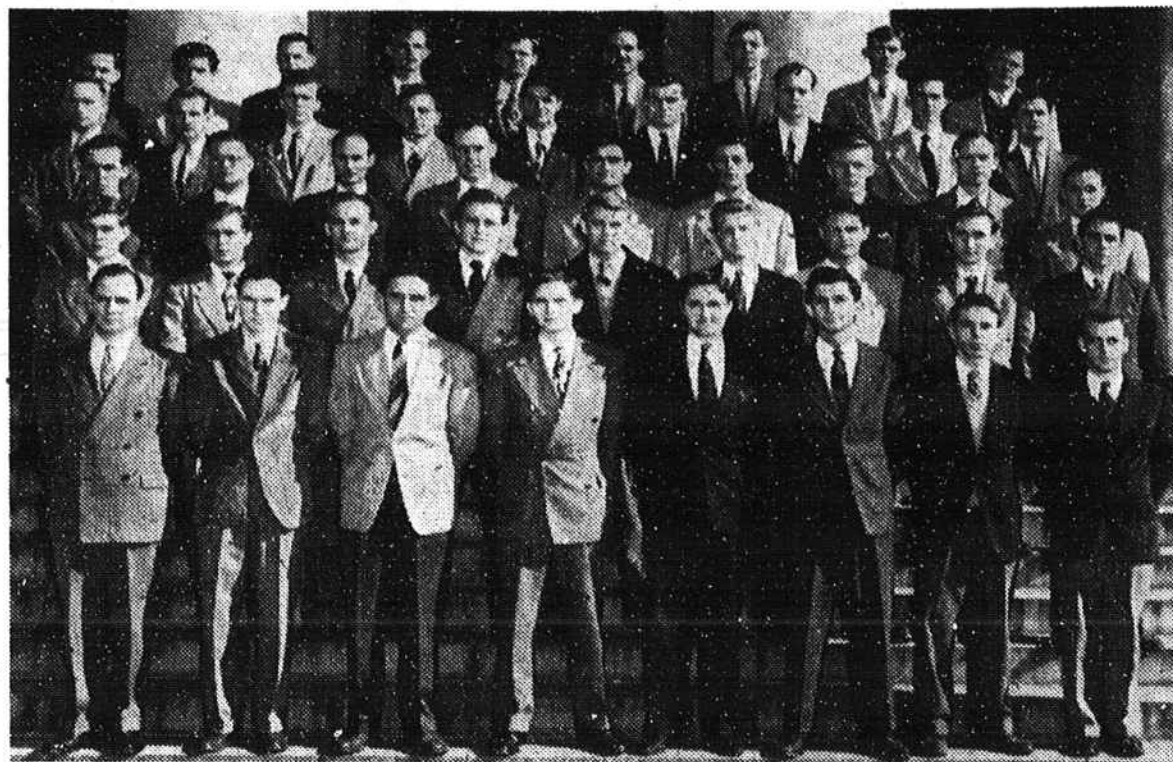
Pi Kappa Alpha will be headed by Troy Newman, president; Bennett Whitlock, vice-president; Billy Lee, secretary; Dan Winsett, treasurer; Wally Doughty, IFC representative; H. G. Carter, historian Art Wilds, Alumni secretary, and Jimmy Crawford, pledge master . . .

Chi Omega sorority will be ruled by the iron hand of Anne Mood, president. Assisting her will be Betty Mood, vice-president; Mabel Pace, secretary; Ellen Schofield, treasurer; Allie Fay Fillingim, pledge mistress; Ish Thomas, chapter correspondent; Carolyn Busbee, rush chairman; Martha Cunningham, vocations chairman; Charlotte Hanna, social service chairman; Beth Fillingim, Pan-Hellenic representative; and Bert Edens, house manager . . .

NOW THAT ELECTIONS ARE OVER, LET'S TURN BACK TO SOCIAL EVENTS . . . Delta Zeta had a party, dates included, Saturday night in the sorority room in honor of (I didn't say to celebrate) the graduation of DZ Elaine Hayes . . . Barbara Croom and Mary Jane Walker went to the Citadel for the week-end. Something or somebody keeps calling them back!!! . . . ChiOs are planning a continuation of the fun enjoyed Christmas by journeying to Charlotte Hanna's house in the mountains over the holidays . . . KD Jane Dowe is going to Boston for a short visit . . . Others will be "tripping off" to recuperate between semesters but the information can not be obtained at the moment!!! On the return to school we'll find out where everyone WENT! Well—

HAPPY HOLIDAYS, EVERYBODY!

## Honorary Engineering Fraternity



Above are members of Epsilon Lambda Sigma, local honorary engineering fraternity. New members were initiated at a banquet Jan 7. (First row, left to right): Prof S. A. Ferguson, faculty adviser, L. A. Cotter, D. F. Mallory, R. A. Nance, E. G. Craig, secretary, R. L. Sumwalt, Jr., Gray McCalley, J. R. Rogers. (Second row): C. W. Hollerung, T. A. Palmer, S. H. Wilds, treasurer; J. L. Baker, G. W. Thomas, C. E. Amick, D. W. Ellis, W. S. Rogers, J. H. Parsons. (Third row): N. S. Emrie, B. T. Rackley, W. A. Martin, R. E. Miller, B. W. Owensby, H. F. Polston, J. E. Vedder, A. B. Wilds, Jack Plaxco. (Fourth row): G. C. Lahey, M. M. Bouknight, S. L. Numberger, W. H. Crumley, president, A. M. O'Neill, L. H. Clerc, Brian Wofford, E. M. Hancock, T. E. MacFie. (Fifth row): M. R. Hawley, Dan Trotter, J. L. Mills, T. D. Pierce, A. L. Pickens, Hal Moore, J. M. Crewz, vice president, W. O. Young, J. E. Moorefield.

## Infirmary To Be Enlarged By Remodeling; X-Ray Is Bought With Student Fund

What do you know about your infirmary? Well, off the record only one death occurred there this year—and that was a pet dog, Trixie, belonging to Mrs. Catherine Quinn, dietitian of the infirmary. A funeral was given him with Dr. Waddell acting as preacher.

Plans are now being formulated to remodel the infirmary, making provisions for 50 more beds than are now available. The temporary annex will be torn down.

An X-ray machine with fluoroscope attachment, a new dark room, and some binocular equipment have recently been bought to bring the equipment up to date. The X-ray machine, which costs \$3,000, was paid for by an accumulation of student funds over a period of years. The student surplus is turned back over to the state if not used. There is about \$12,000 left after the purchase of the X-ray equipment and this will be used to remodel the present building.

Dr. Waddell reports that he averages taking from one to three X-ray pictures a day. These are mostly of bones. The machine does not make pictures of the lungs for tuberculosis diagnosis but students desiring these made are sent to the Richland County Health Department at no cost to them.

The infirmary handles all cases itself except surgical ones. If surgical need arises, the infirmary pays the surgical and anesthetic fees and the student is responsible for the hospital fee. A nurse is on duty 24 hours a day. Routine medicine is furnished but special medicine is bought by the student at wholesale prices. Patients are charged 50 cents per meal—fruit juices between meals are free. Meals are up to good health standards as the physician thinks that good food will sometimes do what medicine won't, and a loss on this end of the business is usually incurred by the infirmary. Laundry service is also free.

A part of the infirmary's work

is making physical examinations of all entrants to the university as this is a requirement for admission.

Dr. Waddell reports that the number of in-patients a month averages 25 except during epidemics. Three years ago an influenza epidemic brought in from 75 to 100 students and beds were placed in halls and dining room. The only epidemic this year has been one of cats—18 were captured over a period of two days, the cause of which is thought to have made its home there some ten years ago. Only three are left.

The staff includes five nurses who are Miss S. Studemire, Miss A. L. Long, Miss S. B. Cash, Mrs. B. Spann, and Mrs. F. Lowe. Other staff members are Miss Z. Dimitri, technician, Mrs. Catherine Quinn, dietitian, and Dr. H. G. Waddell, physician. A student assistant, Jack Woods, pre-medical major, helps the nurses. He rooms and boards at the infirmary.

The present building was constructed in 1908. Prior to its construction an old house on Main street was used. Mrs. Madden, occupant of the house, acted as doctor, nurse, and performed all duties in general.

## Next Film Series To Present Great Continental Shows

The University Film Society, by arrangement with the Museum of Modern Art, New York, will continue its program of films released during the years 1925-1939 which are shown at 8 p. m. Mondays in Drayton Hall.

The second series is great continental films. Admission is by subscription only and membership is limited to 500. Tickets are \$1 for the series and available at the YMCA business office, information desk, the Town Theater office, and the Book and Record Shop, Five Points.

- Feb. 14: Cabinet of Dr. Caligari (Conrad Veidt).
- Feb. 21: Destiny (UFA Film).
- Feb. 28: Seigfried (UFA Film).
- Mar. 7: The Last Laugh (Emil Jannings).
- Mar. 14: Metropolis (directed by Fritz Lang).
- Mar. 21: Loves of Jeanne Ney (directed by Pabst).
- Mar. 28: "M" (Peter Lorre).
- Apr. 4: "From Lumiere to Reno Clair."
- Apr. 11: The Italian Straw Hat (directed by Rene Clair).
- Apr. 18: To be announced.

## Architect Of Caroliniana Library Is Still Mystery; Imitated National Library

The South Caroliniana library is the first separate library to have been erected by any college in America and one of the most prominent buildings on the campus.

The name "Caroliniana," has its origin in the word "Carolina" and the suffix "ana," which means a collection of material related to a particular subject. Since the building is now devoted to the university's collection of books, manuscripts, and pamphlets related to the history of South Carolina, the name "Caroliniana" is entirely appropriate.

There still remains an unsolved mystery connected with the Caro-

liniana Library. This is the mystery of who planned the architecture for the beautiful building, the main part of which is practically identical with the library of congress. The feat has repeatedly been ascribed to Robert Mills, the greatest of South Carolina architects, but no proof has ever been given and the university has never made such a claim. Tradition on the campus says that it was designed by a committee of faculty members, but the only record supporting this tradition says that a faculty committee went to Washington to study the plan of the Library of Congress.

Charles Beck was the contractor and at the completion of the building on May 6, 1840, the total cost was estimated at \$23,494. In 1927, the fire proof wings were added, but the architecture of the new portions was done so well that very little difference can be detected between the old and the new.

In May of 1939, the University Board of Trustees assigned the entire building to the valuable collection of South Carolina books and in December of 1940 established it as South Caroliniana library with Professor R. L. Meriwether of the history department as director.

There are about 20,000 valuable and rare books and pamphlets on South Carolina subjects or by South Carolinians in the library's collection. The newspaper collection numbers 3,000 volumes dating back to 1820. The manuscript holdings amount to more than two million pieces.

There are also many interesting antiques in the possession of the South Caroliniana library, such as the Chippendale chair of state used by the last of the royal government of the colony.

The University of South Carolina may be turning red with embarrassment over the appearance of some of its structures, but it can certainly feel a glow of pride when thinking of the South Caroliniana library.

## Y Nets \$500 Fund; Will Serve Coffee Examination Week

Mr. Bell announced today that the Y made a profit of \$500 on the "Redheads" basketball game, all of which has been spent on kitchen equipment for the Y camp.

Mr. Bell also said that \$10,000 more was needed for camp and that during registration a station in the treasurer's office will be open for pledges toward the Y fund to be paid.

Marie Edwards invited all students to the Y Bible discussion groups beginning next semester. They will be led by Doris McClary and held in Flinn Hall.

Freshman Council The Rev. William A. Thompson of the Trinity Episcopal Church spoke to the freshman Y council at the Luncheon on Monday. The Reverend Thompson, who is the city missionary for Columbia, spoke on girl-boy relationships.

At this meeting it was also decided to hold a reception in Flinn Hall for the new students on Friday, Feb. 4. The campus is invited to attend and greet them.

Sophomore Council Sophomore council is sponsoring a coffee hour for all students during exam week, every night from 9 to 10:30 on the second floor of Flinn Hall.

The coffee is being donated by the Clariosophic literary society and will be served by members of the sophomore council.

Mr. Bell spoke to the council at its weekly luncheon Wednesday on the topic "Evaluation of the Year and Looking Forward Into Next Semester."

New officers will be elected at the first meeting next semester. The present officers are: Bill Dominey, president; Pat Wilson, vice-president; Greta Miley, secretary; and Bill Fairry, treasurer.

**Burnett's  
Drug Store**

Corner Main and College  
Only one Block  
From The Campus

FOR DELIVERY  
PHONE 3191

VISIT

**SOX'S STEAK HOUSE**

— Specializing In —

**\$1.00 STEAKS**

**Short Orders  
And Sandwiches**

723 Saluda 5 Points

The majority of folks engaged in the privately-owned, tax-paying, utility field make a career of providing adequate and dependable services available for their company's customers.

About 500 of this company's folks have five or more years of service — their accumulated years of service totals more than 6,500 —

**South Carolina  
Electric & Gas  
Company**

Carlye

Look . . . listen . . .  
The first '49 Carlyes are here . . .  
They've come, they're right before your eyes in our store now.  
See all the exclusive Carlye prints you can't see anywhere else —  
like the checkerboards, polka dots, bow knots, a shower of jasmine on sheer . . .  
See the twilight taffetas,  
See the new slim skirts, the two-piece ensembles . . .  
See Carlye's flattering high-cut silhouette . . .  
Come . . . see . . . be conquered . . .  
Complete Carlye collection for Spring '49.

Junior Fashions  
SECOND FLOOR

Belk's

IN COLUMBIA IT'S