



JAS. T. HARRIS

Real Estate
Stocks and Bonds.

We handle real estate in large or small quantities in any part of the United States.

We have on our lists some very desirable property, which affords splendid investments. We also have a number of prospective buyers who are not yet suited. If you have real estate to sell or desire to purchase property of any kind, it will pay you to call on us before making a trade.

In our stock and bond department we can give you the most accurate quotations and prompt service.

JAS. T. HARRIS, BROKER.

Office Block

North Church Street

JAMES T. HARRIS.

Although still a young man, Mr. Harris has become the greatest promoter of mineral springs property in the South. His achievements along this line are phenomenal and have made him the "water wizard." He has a keen insight into the merits of a proposition and when his mind is made up he has the energy to work out the details.

His first great venture was the development of the Harris Springs in Laurens County. Here he labored against odds, taking an undeveloped property of unknown merit and carving a fortune out of it. He made Harris Lithia Water famous.

Later on he took hold of White Stone Springs, equally unknown and made it a household word in all the states of the South.

His present property, the Rock Cliff Lithia Springs has been known as one of the finest mineral waters in this section for several generations, and the people of Spartanburg who have been benefited by this water are numbered by the hundred.

Mr. Harris has installed an up to date bottling plant where the water is carbonated and shipped all over the country. He is now engaged in building a resort of surpassing attractiveness.

Besides a splendid naphtha launch on Lawson's Fork, which will have a run of a mile or more, affording a delightful outing on a summer evening, he has a splendid swimming pool, boxing alley, pool and billiard tables, and an auditorium 50x125 feet for dancing, electrical performances and the like.

The springs are one mile from the business portion of the city, are reached by electric cars and this resort fills a long felt want in Spartanburg.

Mr. Harris has never failed in any of his undertakings and has more faith in the Rock Cliff development than in any he has undertaken.

Developing resorts, he is extensively engaged in buying and selling real estate and stocks. His main office is in the Harris Building, North Church street.

Spartanburg, S. C., July 21.
To Rock Cliff Lithia Springs Co.

Gentlemen:—This will certify that about the year 1896 I was severely afflicted with a serious case of erysipelas, that continued me to my bed for about six months or more, with great attendance of a physician, and which eventually settled in my left leg and became so severe that a consultation of three physicians was held and the decision reached that the lower part of my leg would have to be amputated to prevent the disease extending to the upper part of my leg and body. I declined the operation and was advised to try Rock Cliff Lithia Springs Water. I engaged board near the spring and was advised to bath my leg in the water, at the same time drinking freely.



GEORGE LADSHAW.

LADSHAW & LADSHAW.

This well known firm of mill engineers has had 30 years experience in constructing cotton mill developments and hydraulic engineering. They are better equipped for such work than any other firm in this section and have done a great work in saving the energy of the streams of the Carolinas.

Recently the senior member, Geo. E. Ladshaw, has patented the "Differential Arch Dam," which guarantees 20 per cent less cost over designs of the Croten type and 100 per cent less and more for concrete steel construction; much more for less scientific designs and a safety factor of 15 or more against 2 to 3 for gravity masonry dams.

The firm has many development plants in successful operation for many years as a guarantee of their work, and those who are interested in hydraulic development should call on them for designs and models.

J. M. Elford.

STOCKS AND BONDS

A. M. LAW & CO.

ESTABLISHED 1894

STOCKS AND BONDS BOUGHT

SOLD AND EXCHANGED

LOANS NEGOTIATED

All Kinds of Insurance Written

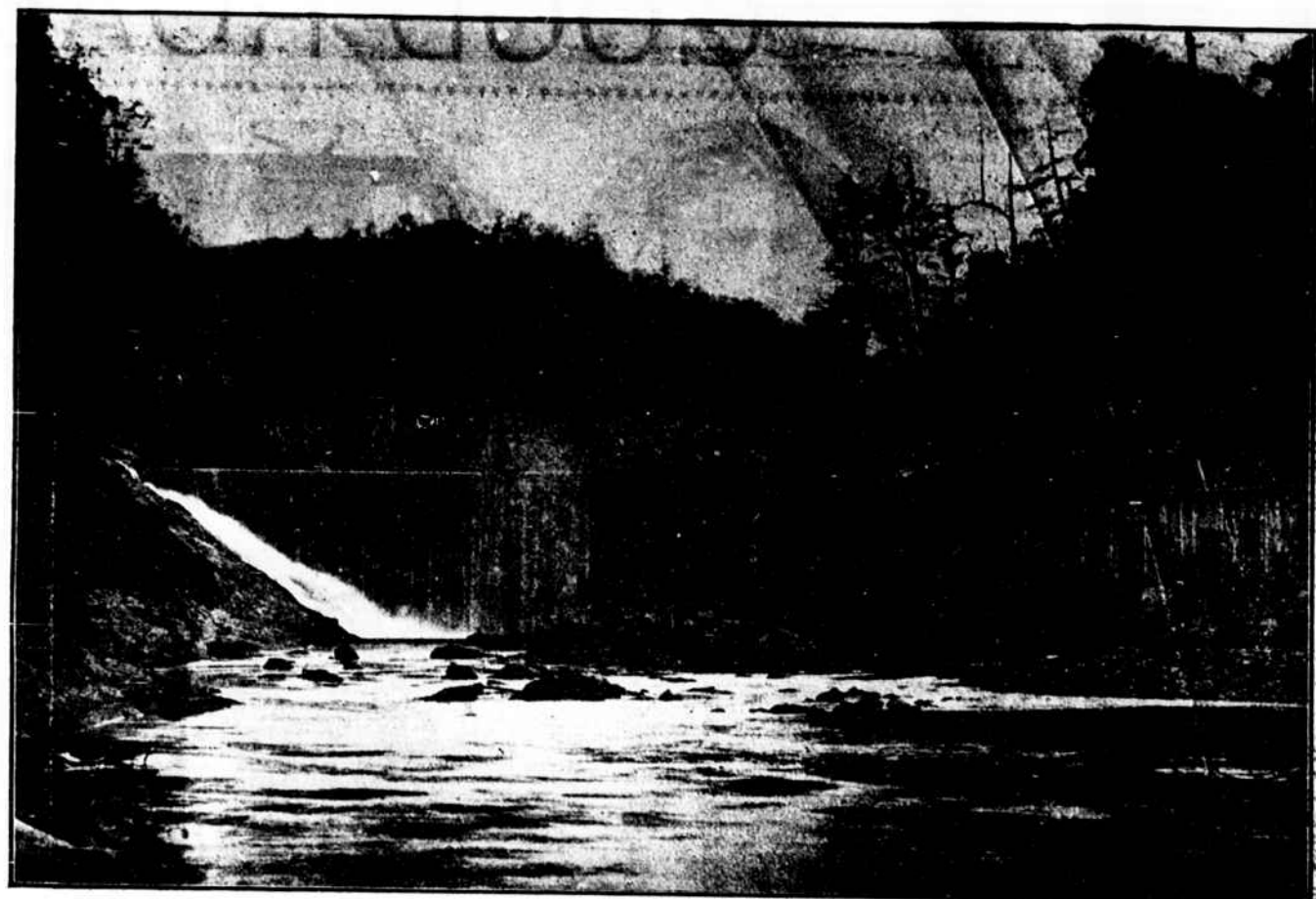
ALL BUSINESS PLACED IN OUR HANDS WILL HAVE

CAREFUL AND PROMPT ATTENTION

Central National Bank
Building

Spartanburg, S. C.

INVESTMENTS IN SOUTHERN MUNICIPAL BONDS YIELDS INTEREST EVERY DAY IN THE YEAR. SECURITY TRUST CO., SPARTANBURG, S. C.



SLOCAN'S ELECTRIC POWER PLANT, WAYNESVILLE, N. C.

Ladshaw & Ladshaw, Engineers.

LADSHAW & LADSHAW.

Civil and Hydraulic Engineers, 17 East Main street. The members of this well known firm are G. E. and T. D. Ladshaw, both of whom have been identified with the building of some of the most prominent cotton mills of the South, some of which are the "Henrietta Mills," Henrietta, N. C.; "Cliffside Cotton Mills," Cliffside, N. C.; and the "W. T. Weaver Power Company," electrical transmission, Asheville, N. C. Both gentlemen of the firm are natives of Canada, but have lived in Spartanburg the greater part of their lives. The business has been established for twenty-five years, and in their well-fitted-up office give employment to from four to six skilled draughtsmen.



HENRY W. THOMSON.

One of the most active brokers and dealers in stocks and bonds, is Henry W. Thomson. He has been very successful in this line and has splendid connections for buying and selling securities of all kinds. He makes a specialty of cotton mill and bank stocks and solicits correspondence from those interested.

ELECTRIC POWER TRANSMISSION.

One of the most important matters that will develop in the near future is the bringing of a dozen large water powers to this city by hydro-electric development. There are two separate and distinct companies coming to Spartanburg with their power and in a few months electric power will be, to all practical intents, unlimited and at a very moderate cost.

The Southern Power Company, of which Gil Wylie of New York is president, J. B. Dukes, vice president; W. S. Lee, Jr., second vice president and chief engineer, with headquarters in Charlotte, is backed by many millions and has undertaken the largest development of this kind in the South.

The company proposes to develop the energy of the water powers of Catawba river and Broad river and transmit the power over a large area, covering northwestern South Carolina above Columbia and that section of North Carolina embraced in a line drawn through Cherryville, Statesville and Concord.

The development of the power plant on Catawba, four miles from Fort Mill, has been completed. This is being distributed to Rock Hill, Fort Mill, Pineville, Yorkville and Clover in South Carolina and to Charlotte, N. C.

EIGHT DEVELOPMENTS.

There will be eight separate power developments on different streams, all connected and power will come from the common line. The nearest of these powers to Spartanburg is at Ninety-Nine Islands on Broad river below Gaffney. Surveys are now being made from this point to Gaffney for a four-line construction, and from Gaffney to Clifton and Spartanburg with connections at all of the intervening mills.

The shoals at High Falls, 22 miles from Chester, southeast, has a capacity of 40,000 horse-power.

The transmission of this power by electricity means not only a very great saving in the first cost of operating machinery, but by direct drives all of the wasted energy in turning heavy shafting and belting is obviated. Then, too, any part of the machinery that needs to be worked overtime, can be operated at a minimum cost without having to run the entire mill. This gives a great saving also. The advantages to the mill are all on the side of the electric system, the chief being the fact that it is furnished at the rate of \$20 per annum per horse-power.

MINERAL WEALTH.

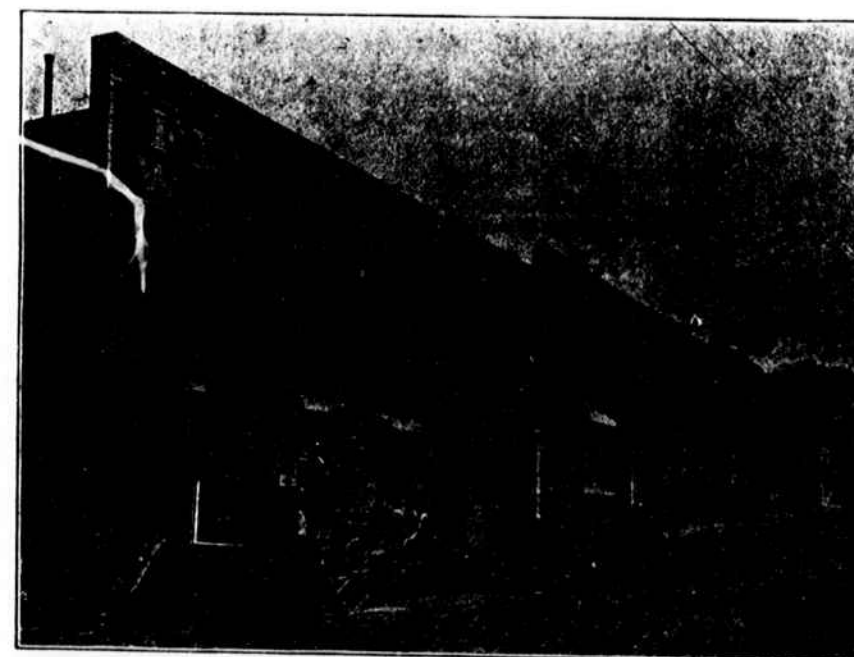
There is high authority for the statement that no county in the United States east of the Rocky mountains contains so great a variety of minerals as are found within the borders of Spartanburg. The iron ore, which before the introduction of new processes of refining gave this county the name "Old Iron District" is of a superior quality. Indeed Prof. Lieber in his geological report says, "England with all her manufacture of iron would rejoice to be able to boast of one single region where iron ore of this quality occurred in equal abundance." Prior to and during



Interior W. W. Fant's Grocery Store, which erroneously appears upside down on page 17.

the civil war, this ore was worked to some extent and the product was known far and wide. The discovery of vast fields of inferior ore nearer to the coal fields stopped development of this industry and since the war it has not been given attention. Veins of gold are found in many parts of the county several mines having been worked with great profit at different times. In the upper portion of the county small placer mines are constantly being worked in a crude way, generally with one or two hands rough little boxes. This gold is thus crudely collected and at the end of the week is taken to the cross roads store and exchanged for groceries. No extensive development of placer mining has even been attempted, though at the Thomson Mine in the southern part of the county extensive machinery has at times been operated and also at the Hammett mines above Glendale tin is also found in paying quantities, the largest tin mine in the United States being located in that part of Cherokee County which was recently cut off from Spartanburg. Monazite is also found in paying quantities, and is one of the profitable mining industries. Silver, copper, lead, graphite, asbestos, plumbago, magnesite, scapolite, limestone, marble, mica, ilmenite, cerium, garnets, etc. The granite is of a superior quality and excellent for building purposes. A large quarry at Pacolet has furnished building material for Philadelphia, Pittsburg and many cities of the North. It is a fine granite and takes a beautiful polish. Granite at the rock quarry operated by the city for material for road building, located about two miles south of the city, is shown by analysis to have 26 per cent. of cement qualities. When crushed and rolled and covered with pulverized granite, it makes a durable road of excellent quality.

FIELDER & BROWN WHOLESALE GROCERS



The largest line of Reliable Groceries. Everything in Canned Goods. Headquarters for Candy and Crackers

Sole Distributors of Swift's Premium Hams, Silver Leaf and Jewel Lard

Our Motto: FAIR TREATMENT TO ALL