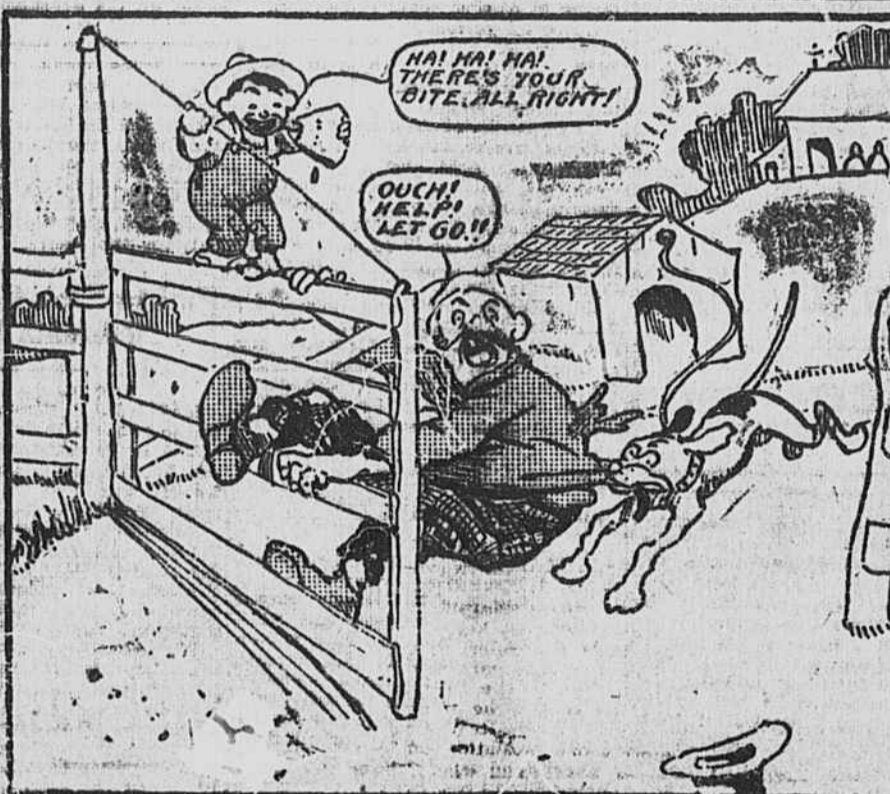
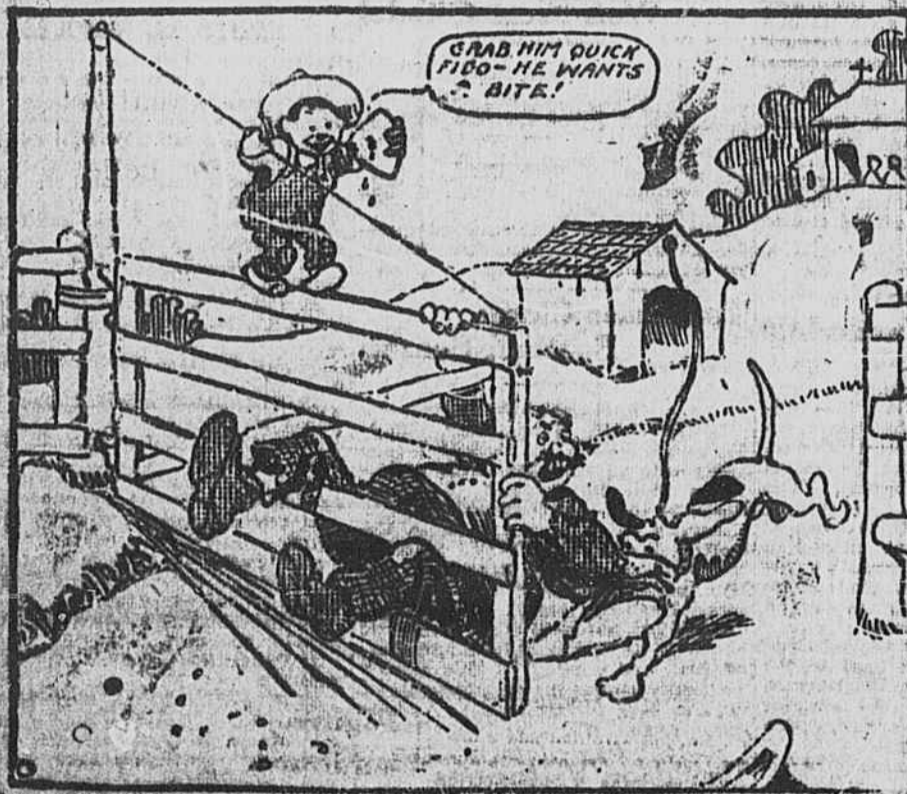
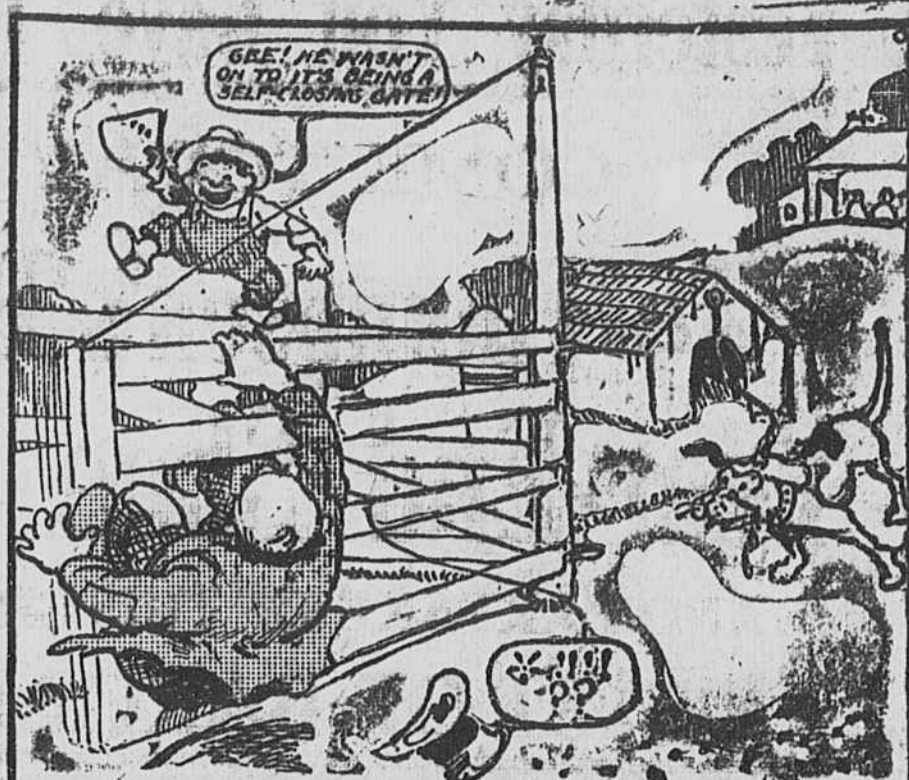


# WEARY WAGGLES DEMANDS A BITE AND GETS IT!



### Condensed Passenger Schedule Piedmont & Northern Railway Company.

Effective November 8th, 1914.  
Anderson, S. C.



Arrivals—

No. 31	8:45 a. m.
No. 33	11:35 a. m.
No. 35	1:30 p. m.
No. 37	3:20 p. m.
No. 39	4:45 p. m.
No. 41	5:50 p. m.
No. 43	7:30 p. m.
No. 45	9:40 p. m.
No. 47	10:50 p. m.

Departures—

No. 30	5:40 a. m.
No. 32	7:30 a. m.
No. 34	10:25 a. m.
No. 36	11:45 a. m.
No. 38	1:30 p. m.
No. 40	3:40 p. m.
No. 42	4:45 p. m.
No. 44	6:35 p. m.
No. 46	8:35 p. m.

(Limited trains.)

C. V. PALMER, Gen. Pass. Agt., Greenville, S. C.

### The Atlantic Coast Line

announces reduced rates to Florence and return, account meeting A. A. O. N. M. & Annual Pilgrimage, Thanksgiving Day, Nov. 29th. Adult Drum Corps at Grand Temple will leave Columbia, Nov. 25th, 1914, 8:40 p. m., on special train via Atlantic Coast Line, arriving Florence 8:15 p. m. Returning, leave Florence Friday morning 8:00 a. m., arriving Columbia 5:00 a. m. This train will be held at Columbia until 5:45 so that Nucleus from young can join the crowd and go into Florence on a fast Pullman Special. By leaving Florence at 8:00 a. m. Friday morning you will arrive in Columbia in time to connect with the out-going train for the upper Carolinas.

For rates and further information write or phone  
E. A. TARKER,  
City Pass Agent,  
Columbia, S. C.

## LEGAL NOTICES

### NOTICE OF COUNTY TREASURER

The books of the County Treasurer will be opened for the collection of State, County and School taxes for the Fiscal Year 1914, and Commutation Road tax for the year 1915 at the County Treasurer's office from October 15th to December 31st, 1914. After December 31st, one per cent penalty will be added; and after February 28th, seven per cent penalty will be added, till the 15th day of March, 1915, when the books will be closed.

All persons owning property in more than one township or school district, are requested to call for receipts in EACH TOWNSHIP OR SCHOOL DISTRICT, in which the property is located. On account of having so many school districts this request is very important to the taxpayers and will to a large extent eliminate extra cost and penalties.

The rates of levy is as follows:  
State Taxes ..... 5 Mills  
Constitutional School Tax . . . 3 Mills  
Ordinary County Purposes 1-2 Mills  
Past Indebtedness . . . . . 1 mill  
Roads and Bridges . . . . . 1 mill  
Public Roads . . . . . 1 Mill  
Total . . . . . 15 1-3 Mills

### Charleston & Western Carolina Railway

To and From the NORTH, SOUTH, EAST, WEST Leaves:

No. 22 . . . . . 6:00 A. M.  
No. 6 . . . . . 3:35 P. M.  
Arrives:  
No. 5 . . . . . 10:50 A. M.  
No. 21 . . . . . 4:55 P. M.  
Information, Schedules, rates, etc., promptly given.  
E. WILLIAMS, G. P. A.,  
Augusta, Ga.  
T. B. CURTIS, C. A.,  
Anderson, S. C.

### Levies for Special School Districts:

Dist	No.	Special Levy Mills	Total Levy Mills
Anderson	17	6	21 3/4
Airy Springs	64	4	19 1/4
Barker Creek	67	4	19 1/4
Boyardian	36	4	19 1/4
Belton	32	2	17 1/2
Bethel	55	2	17 1/2
Bishop Branch	23	4	19 1/4
Bryoles	57	4	19 1/4
Calhoun	29	2	17 1/2
Cedar Grove	80	4	19 1/4
Centerville	6	4	19 1/4
Central	58	4	19 1/4
Cleveland	36	4	19 1/4
Concrete	19	4	19 1/4
Corner	13	4	19 1/4
Double Springs	68	6	21 3/4
Ebenezer	45	2	17 1/2
Bureka	25	2	17 1/2
Fairview	63	4	19 1/4
Friendship	35	4	19 1/4
Gantt	34	5 1/2	21
Genoratae	41	4	19 1/4
Good Hope	63	4	19 1/4
Green Pond	69	3	15 1/2
Hammond	65	3	15 1/2
Hopewell	7	6	21 3/4
Hunter	44	7	23 1/4
Iva	44	7	23 1/4
Lebanon	27	4	19 1/4
Long Branch	33	4	19 1/4
Martin	15	4	19 1/4
Malton	61	4	19 1/4
Mt. Creek	70	2	17 1/2
Mt. View	18	4	19 1/4
Mc Elmoyle	50	6	21 3/4
Mc Isaac	53	2	17 1/2
Neals Creek	60	3	15 1/2
Oak Grove	39	2	17 1/2
Pendleton	3	3	15 1/2
Piercetown	54	3	15 1/2
Rock Hills	5	3	15 1/2
Rocky River	59	3	15 1/2
Savage	26	3	15 1/2
Savannah	9	3	15 1/2
Simpsonville	48	3	15 1/2
Star	87	4	19 1/4
St. Paul	4	4	19 1/4
Three & Twenty	53	4	19 1/4
Tennville	40	3	15 1/2
Union	21	3	15 1/2
West Point	8	3	15 1/2
White Plains	43	3	15 1/2
Williamston	20	3	15 1/2
Williford	62	4	19 1/4
Zion	63	4	19 1/4
Straight			3 1/2

The State Constitution requires all male persons between the ages of 21 and 61 years, except those incapable of earning a support from being maimed or other causes, and those who served in the War between the States, to pay a poll tax of one dollar. All male persons between the ages of 21 and 60 years who are able to work public roads or cause them to be worked except preachers who have

charge of a congregation and persons who served in the War between the States, school teachers and trustees, who are exempted from road duty, may in lieu of work pay a tax of one dollar to be collected at the same time other taxes are collected. Prompt attention will be given all persons who wish to pay their taxes through the mail, by check, money order, etc.  
W. A. TRIPP,  
County Treasurer.

### The Average Cost of Producing Cotton

Costs About 8.24 Cents a Pound or \$20.35 an Acre, According to Report.

WASHINGTON, Nov. 26.—The cost of producing cotton averages about 8.24 cents a pound, or \$20.35 an acre, according to Assistant Chief Nat C. Murray, of the federal bureau of crop estimates, in a report published today. These statistics, the latest available on the subject, are the results of the investigation made in 1914. A similar investigation in 1896 showed the production cost as 5.27 cents a pound, or \$13.42 an acre.

### Status to Memory of Franklin Pierce

CONCORD, N. H., Nov. 26.—Forty-five years after his death, the memory of Franklin Pierce, the only New Hampshire man ever elected president of the United States, was honored today by the dedication of a memorial statue in the State House yard. Opposition on the part of many citizens who believed that President Pierce showed too active sympathy with the South in the days immediately preceding the civil war, frustrated several previous attempts to provide such a memorial. Last year the legislature appropriated \$15,000 for the purpose.

### PENDLETON HIGH SCHOOL.

Items of Interest From Thriving Educational Institution.

Mrs. Hanna will give us our first lesson in art next Tuesday. We are all very anxious to take up this work. Our embroidery class met on Wednesday this week, on account of the holiday. Everybody is taking great interest in the work, and are doing nicely.

Miss Mahaffey will spend the holidays in Townville. The school boys are still working on our tennis court and we hope to enjoy many games before long. Our school has been greatly inconvenienced this week on account of the pump being out of order.

### PLANTING TREES.

From South Carolina: "I am about to set an orchard in the sandhill section, where the top soil is three to six inches and yellow clay below. Will it pay me to blast the holes for the trees in such soil?"  
No, it certainly will not pay. In the sandhill section you need to retain moisture and prevent the leaching away of plant food. Hence a hard subsoil will be best. But in planting the trees put the sandy surface in the bottom, and finish the top with clay, and then manure on the surface and never put any manure in direct contact with the tree roots.

### The More Diversification the More Based Deposits.

Mr. C. G. Craddock of the Craddock-Terry Co., Lynchburg, Va., makes some good points in a recent letter on diversified agriculture. He says: "When they raised nothing but corn in Kansas, practically every farm in the state was mortgaged, and when there was a failure in corn crop the farmers of Kansas were an object of charity, but as they commenced to diversify their crops some ten years ago, Kansas is now one of the richest states in the union. Farm lands have advanced over 100 per cent, the farmers have money in the banks, and a large percentage of them own automobiles and live in beautiful homes with all the modern conveniences. If you will go into any section of the country in the world where the people were dependent upon one crop and where the farmers neglect all other crops, and are therefore forced to buy everything they need, you will find that the farmers in this section are not prosperous. The farmers in this section of Virginia made the mistake by raising nothing but tobacco year after year, but in recent years they have diversified their crops more and more, and consequently, they are better off than they were a few years ago. They have more money in banks, their farms are in better shape, and farm lands are selling very much higher than they did a few years ago."

# Mules and Horses Wanted

For a limited time we are prepared to Exchange Brand New Standard makes of Buggies and Harness for Mules and Horses from 5 to 14 years old, from 1,000 pounds up, on a very liberal basis.

## THE BUGGIES ARE "Brockaway" "Hackney" and the "Luth"

And the Harness is either single or double Harness for Buggies and Wagons, and of good quality.

This proposition is ONLY for a LIMITED TIME; so we suggest PROMPT ACTION if interested.

# Davis Brothers

