

SENECA

Seneca, S. C., Nov. 17.—(Special.) Dr. E. C. Doyl, has returned from the meeting of the Southern Medical Association at Richmond, Va.

Mr. L. A. Edwards, of the Citizens Bank, has been ill at his home on Walhalla St., but is improving.

Mrs. Frank Sloan has returned from a visit to relatives in Greenville. Mrs. Dr. Carpenter of Greenville visited her sister, Mrs. W. S. Hunter, Monday.

The Ladies' Missionary Society of the Presbyterian church are observing their mission week by a series of prayer meetings held in the church every afternoon. Very interesting meetings are being held.

The Boatright brothers of Walhalla have opened up a barber shop in the lobby of the Richardson old hotel, and say they are very much encouraged by the prospects of trade.

Mr. R. J. Mattison, who has been spending some time with his daughter in Belton, is back in Seneca, for a while. Mr. Mattison says that, his health has improved very much since he left here.

Ex-Sheriff W. M. Kay, who has been conducting the Walhalla hotel has accepted the position of chief of police of Seneca, and has moved his family to the Vermer house on Fairplay street.

Miss Fath, daughter of Mr. and Mrs. W. M. Kay, was quietly married at Walhalla last Saturday. The wedding was quite a surprise and only a few friends were present.

The County Land school was opened Monday morning for the winter term. The school is in charge of Misses Gussie Cunningham of Abbeville county and Pauline Davis of this county.

Mr. C. A. Galloway of Greenville is in Seneca today. Mr. J. B. Marshall of Anderson was a business visitor in Seneca Tuesday.

Mr. A. P. Brown has returned from South Georgia where he has been for several months looking after the gathering of the crops from his extensive farming interests in that section.

Mr. J. A. Bryon, a former Seneca man but now a Southern Railway conductor, has been in town for several days but has now gone to Memphis, Tenn.

Mr. Oscar Thompson of Atlanta and his family are visiting at the home of his mother and sister, Mrs. Thompson and Mrs. J. L. Murrett, on First South street.

Because they talked back to President Wilson, the negro delegation left sadder but wiser men. It is evident that none of these negroes ever picked cotton. "befo de wah."

SPECIAL RATES

GREATLY REDUCED ROUND TRIP FARES VIA SOUTHERN RAILWAY IN CONNECTION WITH BLUE RIDGE FROM ANDERSON, S. C.

\$4.40... Atlanta, Ga. And return account of Christian Temperance Union. Tickets on sale Nov. 7 to 19 inclusive, with return limit Nov. 22nd.

\$4.00... Annual Convention United Daughters of the Confederacy. Tickets on sale Nov. 7 to 19, final limit Nov. 20, 1914.

Richmond, Va., \$10.75. Southern Medical Association. Tickets on sale Nov. 8 to 10, final limit Nov. 22, 1914.

Spartanburg, S. C., \$2.50. Spartanburg Fair Association. Tickets on sale Nov. 1 to 5, final limit Nov. 7, 1914.

For complete information, tickets and etc., call on ticket agent, or write: J. H. Anderson, Supl., Anderson, S. C.

Condensed Passenger Schedule. PIEDMONT & NORTHERN RAILWAY COMPANY. Effective November 8th, 1914. Anderson, S. C.

Table with 2 columns: Arrivals and Departures. Lists train numbers and times for various destinations like Greenville and Columbia.

Table with 2 columns: Arrivals and Departures. Lists train numbers and times for various destinations like Greenville and Columbia.

LIKE FAIRYLAND COME TRUE IS MOST MARVELOUS AND BEAUTIFUL OF WORLD'S EXPOSITIONS, READY MONTHS BEFORE TIME

MANY EUROPEAN NATIONS WILL BE REPRESENTED AT SAN FRANCISCO UPON A SPLENDID SCALE—VAST FOREIGN PAVILIONS ARISE IN FOREIGN SECTION.

M Marvels of Sculpture, Architecture, Color, Wonderful Gardens, Vast Facades, Tremendous Colonnades, Great Towers and Minarets, Characterize City of Palaces on Shores of San Francisco Bay

Months before its opening day, on February, 20, 1915, the vast Panama-Pacific International Exposition, at which the United States will celebrate the opening of the Panama canal, had been completed and the installation of the world's exhibits begun.

The exposition today stands revealed as a supreme triumph in architecture, a marvelous fairyland come true, overshadowing and eclipsing every other exhibition in the history of the world.

In the stupendous exhibit palaces wonderful exhibits from England, from Germany, from the Netherlands, from Portugal, from Spain, from Italy, from Sweden, Norway, Denmark, Japan, China, the Argentine, Bolivia, and indeed all portions of the world will delight the vast throngs that meet in San Francisco.

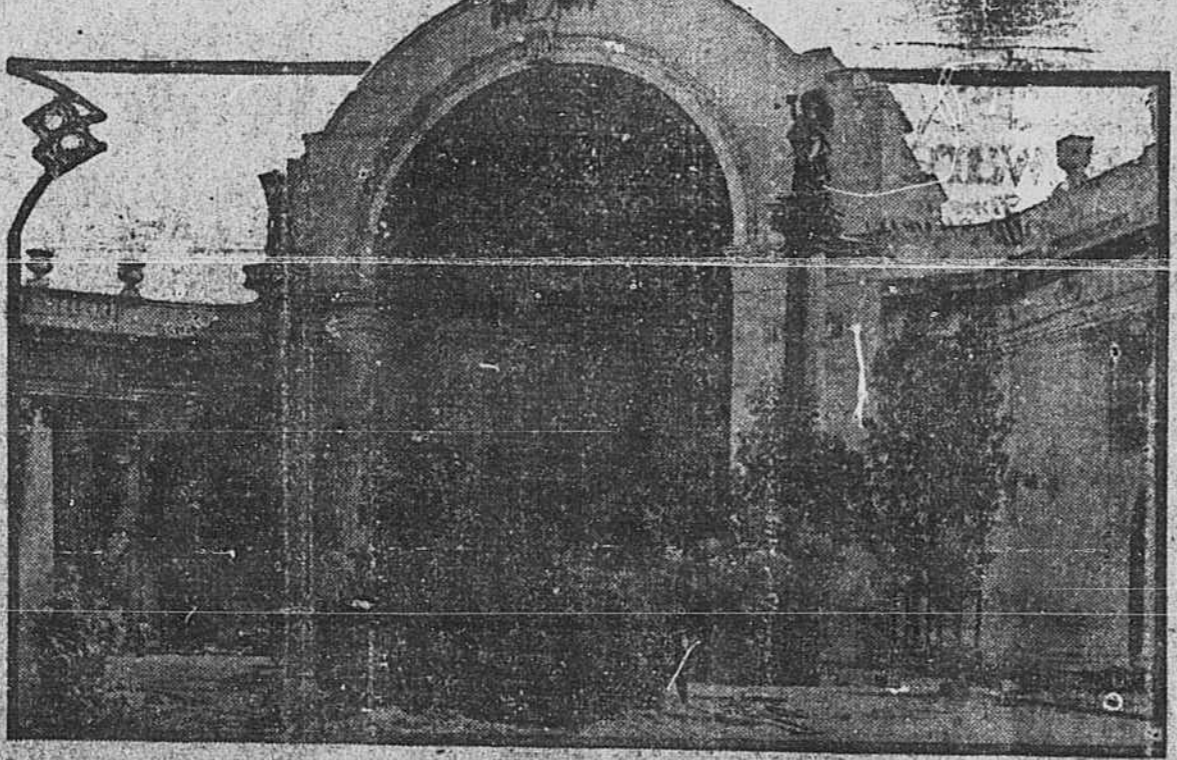
Shortly after the European war broke out the Netherlands government increased its fund for official participation from \$100,000 to \$400,000; Japan applied for more exhibit space; Italy ratified its appropriation of \$400,000 and ordered construction rushed upon the wonderful Italian pavilions; Denmark, Sweden and Norway proceeded actively with their plans and exhibitors from Germany and England applied for exhibit space.

The greatest live stock show in the world's history will be held during the period of the exposition. More than half a million dollars is assured in premiums and prizes for this colossal exhibition. Many new breeds of live stock will be shown, including the Bretonnese and the Boulonnaise from Brittany and Boulogne, France, the subjects of special interest on the part of the French government, which desires to foster a demand abroad for registered animals of this class.

The huge "Zone," the vast amusement section, will delight visitors from all parts of the world. Hundreds of great congresses and conventions will be held in San Francisco. Those who are planning to visit America's great show in 1915 may take advantage of the following offer:

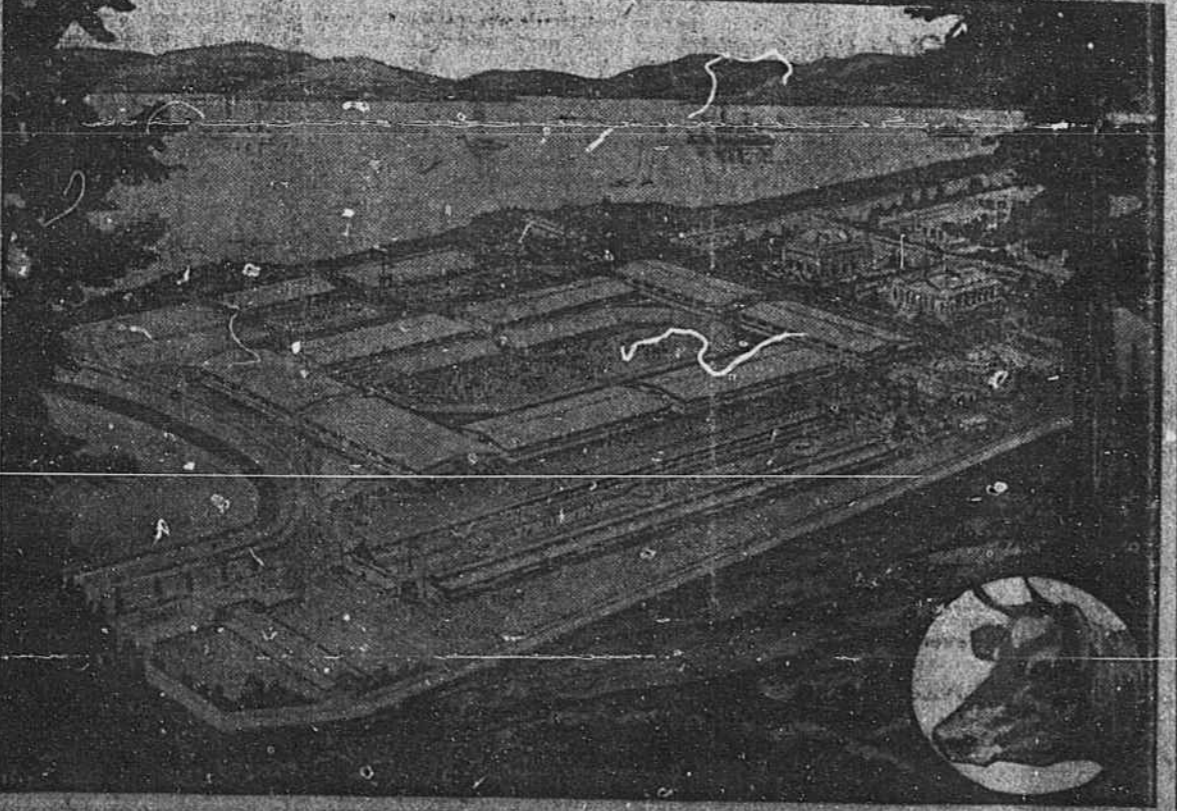
ATTRACTIVE BOOK ON THE PANAMA-PACIFIC INTERNATIONAL EXPOSITION AND PANAMA CANAL MAILED FREE OF CHARGE. A handsome book of sixty pages, profusely illustrated in colors and giving detailed descriptions of the Panama-Pacific International Exposition to be held in San Francisco from February 20 to December 4, 1915, and of the Panama canal and canal region, will be mailed by the Exposition free of charge to all inquirers. The booklet is for prospective visitors and will also contain information concerning the great engineering feat which the exposition is to celebrate, the building of the Panama canal. Write to the Manager, Bureau of Publications, Panama-Pacific International Exposition, Exposition Building, San Francisco, for booklet.

SUPERB HALF-DOME OF THE COURT OF THE FOUR SEASONS AT THE PANAMA-PACIFIC INTERNATIONAL EXPOSITION, SAN FRANCISCO, 1915



Copyright, 1914, by Panama Pacific International Exposition Company. Wonderful mosaics and sculptures adorn the great exhibit palaces of the Panama-Pacific International Exposition in San Francisco, 1915. The above picture shows the half-dome in the Court of the Four Seasons, crowned by a symbolical sculptural group by Albert Jaegers, the celebrated sculptor, representing "The Harvest." The column on the left is surmounted by the figure "Sunshine" and on the right by the figure "Rain."

GREATEST LIVE STOCK SHOW IN THE HISTORY OF THE WORLD PANAMA-PACIFIC INTERNATIONAL EXPOSITION, SAN FRANCISCO, 1915



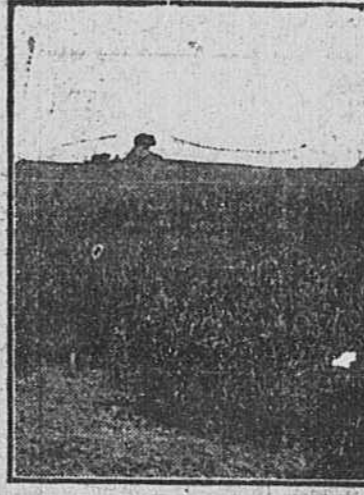
Copyright, 1914, by Panama Pacific International Exposition Company. The greatest and most comprehensive live stock show in the history of the world will be staged at the vast Panama-Pacific International Exposition. Scores of valuable and rare breeds of live stock will be shown from every country in the world, including France, England, Belgium, and other countries in the European war zone. More than one-half million dollars is assured in prizes and purses for winning live stock. This photograph shows the vast live stock arena, covering more than forty acres, with the great judging amphitheater in the center. The live stock show will last throughout the period of the exposition, from February 20 to December 4, 1915.

Scientific Farming

GOOD AND BAD GRAIN YIELDS.

State Experiment Station at Pullman, Wash., Conducting Researches. More than 2,300 different grain experiments with legumes, grasses, etc., have been made at the state experiment station at Pullman, says the Spokane Spokesman-Review. Two hundred varieties of winter wheat are grown on the farm, together with 150 varieties of spring wheat. In the last ten years, with a crop of some kind grown on the ground every year, the productivity of the soil has increased 50 per cent, due to tillage and crop rotation.

The principal grain experiments in selection, breeding and variety testing are conducted on a field which is divided into three parts, and each part grows grain only every third year, peas and corn being alternated. The breeding experiments are for smut resistance, high nitrogen content, straw that will not lodge, nonshattering heads, bigger yield, etc.



A FIELD OF WESTERN GRAIN.

In a five year experiment for yield College Hybrid No. 143, a cross between Little Club and White Tract, shows a five bushel per year advantage over red Russian, the best yielder of the older varieties raised in this section, and in the smut resistance experiments with these two breeds there was practically no difference, which would disprove the somewhat general idea that No. 143 smuts easily.

One of the most interesting of the experiments, which are now almost at maturity, is that in which two parallel plots of wheat figure. One plot on which was planted wheat treated for smut and sown in clean soil shows a magnificent stand of wheat almost entirely free from smut, while the adjoining plot, which was planted at the same time with seed wheat which had been rolled in smut and the soil inoculated with the smut germs, shows a stand of wheat 98 per cent smutty.

A convincing argument in favor of crop rotation is the magnificent stand of oats on one of the fields. The yield of this field is estimated at nearly seven bushels per acre. Last year the same field produced forty-three bushels of field peas, the previous year forty-seven bushels of wheat to the acre, and the year before that eleven tons of corn fodder were taken from each acre of the field.

That early and deep cultivation and packing are essential to the production of a bumper crop is the realization that must come to even the novice who views the extensive plots which are given over to experimentation in soil cultivation to conserve moisture. The grain on these plots, all of the same variety, Hybrid No. 143, is at the harvest stage and, while exact figures and percentages will not be available until after the crop on each plot is thrashed and measured, an intimation of what the results will show may be gained by comparing the stand in the different plots. These experiments cover a three year test, different methods of cultivation being followed each year. Most noticeable in the different plots is the advantage which the plots that were packed show over those which were not packed; also the plots which were plowed early show a decided advantage in present stand of wheat over late plowed plots.

Probably the premier plot of the entire experiment is that which in 1912 was left in wheat stubble. The year following it was plowed early, packed and later plowed again and now shows an almost phenomenal stand of winter wheat, much better than the adjoining plot, on which the same methods of tillage were employed, except that it was not packed to conserve the moisture.

Selecting Seed Corn. Early selection of seed corn from the hill has many important advantages over selection later in the season. In the first place, it enables one to select only the best ears to have matured at the proper time, while if the selection is deferred and weather conditions continue favorable some of the later maturing ears may be selected, because they are likely to be larger and heavier.

IS YOUR HOUSE INSURED AGAINST FIRE?

Of course! Weather is more harmful than fire. Pattons Sun Proof Paint is the cheapest Paint Insurance.

GUEST PAINT COMPANY

Phone 48. W. Earle St. "Guest Sells the Best."

LEGAL NOTICES

Delinquent Road Tax Notice. All delinquent road tax collectors are provided with an official receipt book with numbers and stub numbers attached. Pay no money to collectors unless you get the official receipt as above provided or. J. MACK KING, County Supervisor.

NOTICE OF COUNTY TREASURER. The books of the County Treasurer will be opened for the collection of State, County and School taxes for the Fiscal Year 1914, and Commutation Road tax for the year 1915 at the County Treasurer's office from October 15th to December 31st, 1914. After December 31st, one per cent penalty will be added; and after February 28th, seven per cent penalty will be added, until the 15th day of March, 1915, when the books will be closed.

All persons owning property in more than one township or school district, are requested to call for receipts in EACH TOWNSHIP OR SCHOOL DISTRICT, in which the property is located. On account of having so many school districts this request is very important to the taxpayers and will to a large extent eliminate extra cost and penalties.

Table showing tax rates for various categories like State Taxes, Constitutional School Tax, Ordinary County Purposes, etc.

The following are the additional levies for Special School Districts: Anderson 17 Mills, Alry Springs 8 Mills, Barker Creek 6 Mills, Bevardam 50 Mills, Belton 12 Mills, Bethel 58 Mills, Bishop Branch 22 Mills, Broyles 71 Mills, Calhoun 22 Mills, Cedar Grove 30 Mills, Centerville 9 Mills, Central 58 Mills, Cleveland 36 Mills, Concrete 19 Mills, Corner 13 Mills, Double Springs 68 Mills, Ebenezer 45 Mills, Fairview 25 Mills, Friendship 55 Mills, Gantt 34 Mills, Good Hope 51 Mills, Green Pond 59 Mills, Grove 65 Mills, Hammond 3 Mills, Hope Path 16 Mills, Hopewell 7 Mills, Hurser 24 Mills, Iva 44 Mills, Lebanon 27 Mills, Long Branch 39 Mills, Martin 15 Mills, Melton 51 Mills, Mt. Creek 70 Mills, Mt. View 18 Mills, McElmoye 50 Mills, McLeese 52 Mills, Neals Creek 60 Mills, Oak Grove 39 Mills, Pendleton 2 Mills, Piercetown 54 Mills, Rocky River 69 Mills, Saluda 28 Mills, Savannah 9 Mills, Simpsonville 41 Mills, Starr 87 Mills, Star 4 Mills, Threes & Twenty 88 Mills, Townville 40 Mills, Union 24 Mills, West Palzer 5 Mills, White Plains 48 Mills, Williamson 20 Mills, Williford 62 Mills, Zion 53 Mills.

Prompt attention will be given all persons who wish to pay their taxes through the mail, by check, money order, etc. W. A. TRIPP, County Treasurer.

Have You Seen Gene? A manufacturer from the North stopped me on the street in Memphis the other day and asked me: "Martin, can the Southern farmers 'come back' from this awful 'let they had this fall'?"

Made me mad and I replied as I walked off—Pardon me they are all here. Some people in the North have conducted this "Buy-a-Bale" movement as the "S. O. S." of a sinking ship.

Over-production is the stumbling block, and systematic marketing the stepping-stone of agriculture. To eliminate waste and inefficiency in marketing, the farmer should keep in close touch with market conditions.

Dinner for small family for only \$3.25. List of items including Turkey, Cranberries, Mixed Pickles, Tomatoes, Small Can Tunny Fish, Celery, Apples, Bananas. J. M. McCOWN, Phone No. 22.

PIEDMONT INSURANCE AGENCY. See Me For Any and All INSURANCE. C. E. TRIBBLE, Manager, Brown Building.