

# STATE'S MONUMENT AT CHICAMAUGA

## Program of Unveiling—Orator and Other Arrangements

(By the late Col. Jas. A. Hoyt.)

The unveiling and dedication of the monument in the Chickamauga battlefield, which South Carolina is erecting to her sons who fought and who died on that historic spot will take place May 27, 1914. The date was arranged so that the veterans, sons and others going to the Memphis reunion, could easily stop over and take part. The Chickamauga commission extends through the press of the State a cordial invitation to all the citizens of South Carolina to join in the most impressive and interesting ceremonies.

For the convenience of Veterans, Sons, the State volunteer troops and all citizens attending the Southern railway has made special arrangements and this route will be the official route. They will announce the dates of leaving various points and rates.

The official train will be run down to Lytle station, near the battlefield, and about a half mile from the site of the South Carolina monument, and the distance can be easily walked, but arrangements will be made for the backs to carry over such visitors as prefer riding and paying.

At the station the procession will be joined by Gen. J. W. Cornish, Chief Marshal.

1. Band
2. South Carolina volunteers, state troops, under the command of an officer to be designated by Adjutant General Floy.
3. Sons of Confederate Veterans, under command of Walter H. Hunt.
4. Veterans of South Carolina Division U. C. V.
5. Visiting Veterans.
6. Distinguished guests in carriages.
7. Visitors.

The columns will march by the road skirting along the southern base of Snodgrass range. As they strike the Yellow house they will a large marker where the 10th and 19th South Carolina regiments fought, for three hours on Snodgrass range above this point. Gathered under and around the battle scarred flag of the 10th South Carolina regiment, which led them to victory on the heights above, will be the visiting veterans of that command. As the procession will salute and uncover as it passes the group of heroes.

Further on is a similar marker, where the 24th South Carolina regiment and Culpepper's battery fought about one mile to the northeast of this point and near it the flags and men of the gallant commands. Again, a dedication marker.

Further on on the road to the main monument, a large marker to be found another marker to the coronal men of Kershaw's Brigade, the 2d, 7th, 8th and 15th South Carolina regiments and James' South Carolina battalions fought for five hours on Snodgrass Range above the ridge. The battleflag and heroes of Kershaw will be saluted.

The procession now arrives on the main scene to the valor and the

worth of South Carolina's sons, for it was that over which Kershaw swept, as he drove the enemy back to their last stand on the ridge.

Arriving at the monument the veterans will pass to the front, the State Volunteer troops saluting.

The Park Commissioners will have erected a large stage and sufficient seating capacity for the veterans and visitors. Gov. McSweeney, governor of the State and chairman of the commission, will preside.

The meeting will be opened with prayer by the Rev. Dr. J. H. Thornwell, Chaplain General South Carolina Division U. C. V.

Gen. C. I. Walker who won distinction on this and other battlefields, now the beloved commander of the South Carolina Division U. C. V., and who has taken a deep interest and materially aided in the accomplishment of the memorial about to be dedicated, and a leading member of the commission will deliver the historical address.

Addresses will be delivered by the Hon. D. S. Henderson of the Senate, and Col. J. Harvey Wilson of the House of Representatives, through the liberality of which bodies, South Carolina has done this justice to her heroic sons.

An address will then be made by the General, now the beloved Bishop, Ellison Capers, who served on the battlefield with his well known gallantry. Bishop Capers' address will lead up to the unveiling which will be done by four young ladies, representing each one of the South Carolina commands engaged in the battle—Miss Elberta Bland, a granddaughter of the distinguished Elbert Bland, who gave up his life fighting with Kershaw on Snodgrass Range.

For the 10th and 19th South Carolina regiments—Miss Ada Orie Walker, a granddaughter of Gen. C. I. Walker.

For the 24th South Carolina regiment—Miss Marie DuPre, grand niece of Col. H. C. Stevens, who so gallantly led the 24th South Carolina regiment in the battle, and also the grand niece of Col. Ellison Capers, who succeeded Col. Stevens in command of the regiment.

For Culpepper's Battery, Miss —.

As the ribbons are pulled the cover will fall and show one of the handsomest monuments in the Park. It is built of South Carolina granite, and a fit emblem of the heroic stand made by the South Carolinians on the field—on either side is a bronze statue, original, and made especially for this work, an infantryman on one side, and an artilleryman on the other. South Carolina had no cavalry in the battle.

Crowning the whole is a bronze palmetto of exquisite workmanship, surpassing in truthfulness to nature the wonderful bronze palmetto at the State House.

On the front of the upper stone is the shield of South Carolina in bronze.

The inscriptions are as follows:  
On the front composed by Bishop

Capers, with grand simplicity: To her faithful sons at Chickamauga South Carolina

Erects this Monument to Commemorate the valor they proved and the lives they gave on this battlefield.

On the back:  
Kershaw's brigade, Second South Carolina regiment, 8th South Carolina regiment, 15th South Carolina regiment, James' 3rd South Carolina Battalion: Killed 65; wounded 438; missing 1.

Manicault's brigade, 10th South Carolina regiment, consolidated; killed 26; mortally wounded 40; wounded 170.

Glat's brigade, 24th South Carolina regiment: killed 43; wounded 114; missing 2.

Culpepper's battery, wounded 14.

The total height of the monument is 33 feet. The work was done by the Stewart Stone Co., Columbia, S. C., and reflects the highest credit on their artistic taste and skill.

Around the monument is a 12 foot circular pavement of cement, faced with granite.

As soon as the monument is unveiled Governor McSweeney will turn it over to the Park Commission and it will be received by General Henry V. Boynton, chairman.

The ceremonies having ended, the crowd will disperse over the battlefield to study and admire them.

The official trains will return to Chattanooga in the afternoon, and after time for supper, etc., the veteran for Memphis will speed on their way reaching that point early on the morning of the 28th of May.

The markers for South Carolina troops will be placed on the battlefield as follows:

1. Kershaw's brigade—On the slope of Snodgrass Range, one for each of the regiments.
2. For the 10th and 19th South Carolina regiments the position in general during the afternoon is shown by the guns of Dent's battery on the crest of the ridge. Advancing from this point they made repeated charges on the enemy, and the point of furthest advance is shown by the South Carolina marker.
3. For the 24th South Carolina regiment the market is placed on Kelly's Farm near the "Bloody Angle," and near the shell monument to their brigade commander, Colquitt.
4. For Culpepper's battery in the Pot field, near the Georgia monument.

The battleflag around which the veterans of the 10th and 19th South Carolina regiments will assemble is the worn and tattered flag of the 10th South Carolina regiment. It was saved from the surrender most providentially. At the battle of Bentonville the 10th South Carolina regiment, then commanded by Capt. R. Z. Harliee penetrated the enemy's lines, but reformed and Capt. Harliee, Sergeant Albert A. Myers, bearing the flag, about twenty men, half of the regiment, so reduced was it, were cut off and they took off to the swamp and



© by the Review of Reviews company. GENERAL ALFRED MOUTON, C. S. A., DEFENDER OF LOUISIANA.

did until night. Sergeant Myers then threw away the staff and put the flag under his coat. The party made their way through the swamp and got back to the Confederate lines. The remnants of the 10th and 19th South Carolina regiments were subsequently consolidated into Walker's brigade, and so surrendered. When Col. Walker returned from wounded furlough, he could learn nothing of the 10th regiment's flag, that of the 19th South Carolina being used at the Battalion colors and at the surrender properly surrendered it as the flag of the battalion.

As Col. Walker rode out of the camp on the way home Capt. Harliee handed him a package, giving it with the express stipulation that it should not be opened until he reached his home. When he reached home, he opened it and found it was the flag of the 10th South Carolina regiment. He has treasured it most sacredly ever since. The upper half of the flag staff is a piece of the flag staff of Fort Sumter which was used by Maj. Anderson during the attack on the Fort, April 1861. It was given by Col. Joseph Walker, the father of Col. C. I. Walker, by Gen. Beauregard. Altogether the flag staff is a most historically valuable memento.

It was proposed to first lay the cornerstone of the monument before the dedication thereof, but the elaborate Masonic ceremonies would have taken too much time for the limited time available, so this function had to reluctantly be dispensed with. The monument has a cornerstone and

1. It will be deposited:
1. Col. Dickert's valuable sketch of Kershaw's brigade.
2. Col. C. I. Walker's valuable sketch of the 10th South Carolina regiment, typewritten manuscript.
3. Sketch of the 10th and 19th South Carolina regiments by Gen. Ellison Walker for Adjutant General of South Carolina.
4. Sketch of the 15th and 24th South Carolina regiments, by Gen. Ellison Capers.
5. Sketch of Culpepper's battery.
6. Rolls of 19th and 24th South Carolina regiments and Culpepper's battery—the rolls of Kershaw's brigade being in Capt. Dickert's book and of the 10th South Carolina regiment in Col. Walker's book.

### A VALUED KEEPSAKE

A Commission of Captain of Artillery Issued to a Boy of Thirteen

Sewberry Observer.

Mr. P. C. Gaillard of this city has a commission issued to him by Gov. Hampton in 1878 that he prizes very highly. When the Democratic campaign party went to Anderson in the memorable campaign in 1878 they were met by thousands of Redshirts and many military companies, and by a company of artillery from Pendleton composed of boys 12 or 13 years of age. They had a small cannon mounted on two wheels and drawn by three small donkeys in tandem. Mr. Gaillard, who was then 13, was the captain of the company. In appreciation of this mark of respect by the boys, Gov. Hampton issued a commission to the young captain which reads as follows:

THE PEOPLE OF THE STATE OF SOUTH CAROLINA, BY THE GRACE OF GOD FREE AND INDEPENDENT VOLUNTEER TROOPS STATE OF SOUTH CAROLINA.

To Peter Cordes Gaillard, Greeting: We, reposing special trust and confidence as well in your patriotism, conduct and loyalty, as in your integrity and readiness to do us good and faithful service, have appointed and constituted, and by these presents do appoint and constitute you the said Peter Cordes Gaillard captain of the Young Artillery Company, Eleventh brigade, Third division, Volunteer State troops of South Carolina, ranking as captain from March 27, 1878.

You are therefore to observe and follow such orders and directions as you shall from time to time receive from our commander-in-chief of the military forces of our state or any other your superior officer, according to the rules and discipline of war, and to hold said office in the manner specified in and by the constitution and laws of our said state, in pursuance of the trust reposed in you, and for so long as you shall be your commission.

Witness Wade Hampton, governor of our said state, commander-in-chief of the military and naval forces of the same, at our city of Columbia, this 2nd day of April, one thousand eight hundred and seventy-eight.

E. W. Moise, Adjutant and Inspector General. Wade Hampton.

# 1874—John M. Hubbard & Co.—1914

## Cut Glass

A very choice assortment of Cut Glass awaits your inspection here. Ice Cream Trays, Bowls, Sherbet Glasses, Water Sets, in fact, everything that makes a complete stock. Many beautiful designs are shown in Engraved Vases—the glass is clear as crystal. One dollar's worth for every hundred cents.

## Clocks and Watches

Westminster Chimes in Mahogany Cases. Mantel Clocks and Novelty Clocks of all description. The time is correct and prices are right. We carry all the high grade watches, such as the Hamilton, South Bend, Howard, Etc., over 50 per cent. of the watches carried by railroad men, where inspection is enforced are Hamilton watches, it is probably the best American watch on the market today. If you need a dependable and accurate timekeeper call around and let's talk it over.

## China

Dinner Sets in French, German and Austrian China, either fancy or white and gold patterns. A most rigid inspection of our French China is made before it leaves the house. No flaws or warped dishes are to be found. The greatest care is exercised in the selection of our stock of Hand Decorated China Cake Sets, Coffee Sets, Vases and odd pieces that are the finished product of artists.

## Diamonds

People are not always judged at first by their appearance. The wearing of a Diamond lends an air of prosperity that is far-reaching in its influence. The fact that diamonds have advanced over 200 per cent in the last 18 years, proves that they are a good investment as well as being valuable for adornment.

If you are in the market for a stone of high quality, here is the place to buy it. Every diamond is backed by a guarantee—a guarantee backed by knowledge and a reputation of 40 years standing for TRUE VALUE GIVING

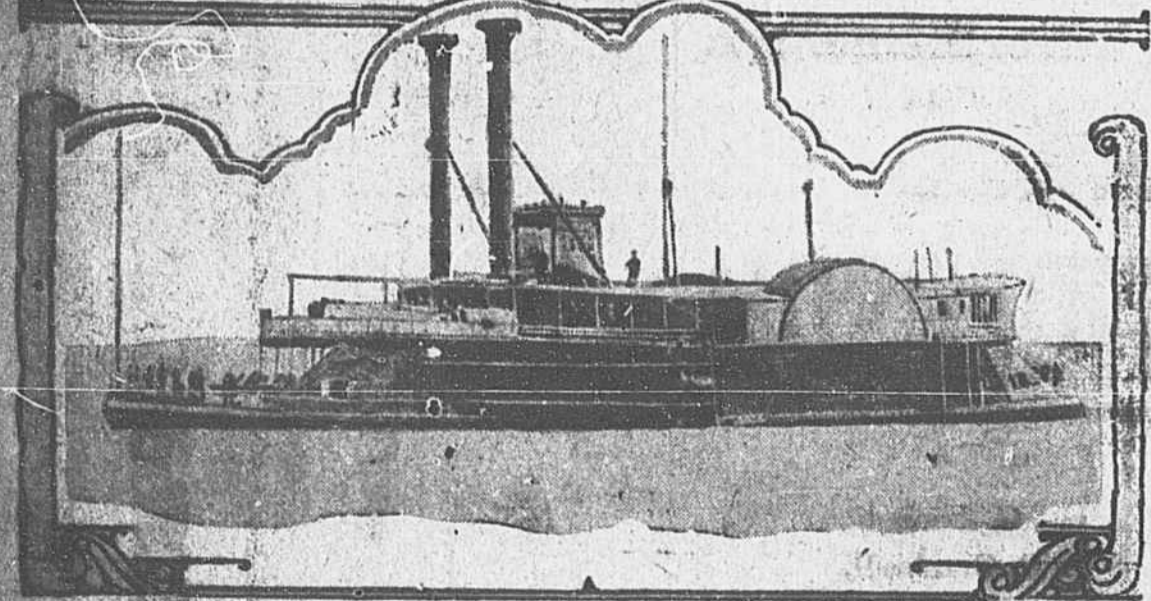
## Jewelry

For pretty designs, style, finish and general quality, we proudly boast of our Jewelry stock. A varied assortment of Set Rings, La Vallieres, Brooches, Set Pins, Etc., at a moderate price can be found here. If you are looking for a gift suitable for any occasion we have it.

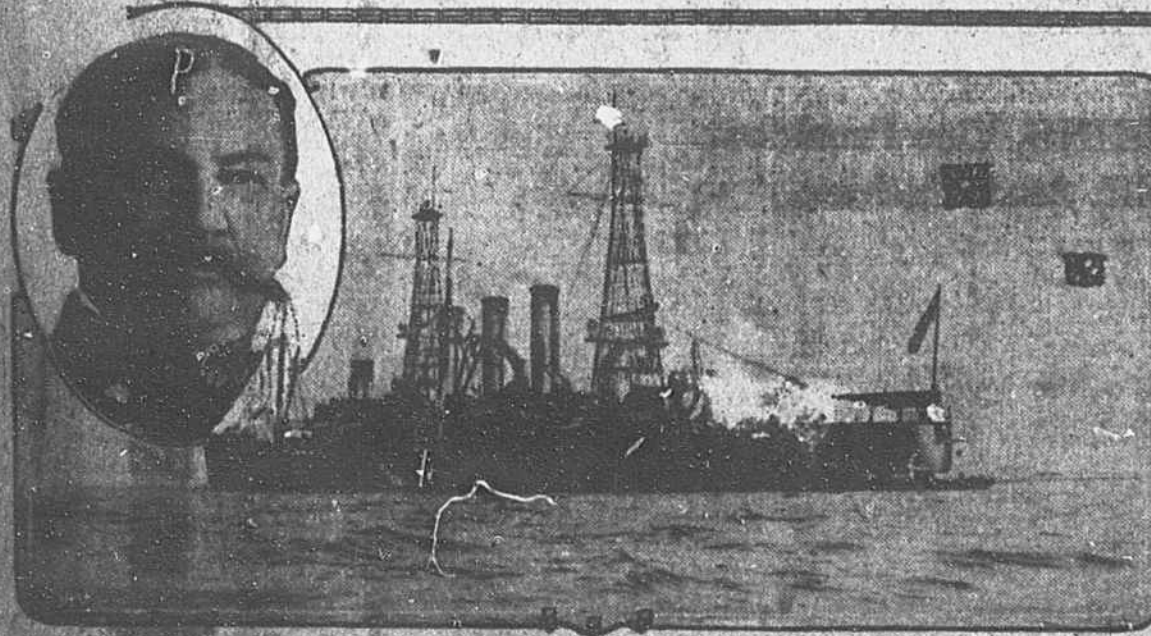
## Sheffield Plates

A German Silver base heavily plated with sterling silver that is durable and many times more serviceable than a light weight of sterling silver. Some of the pieces are reproductions of the old Sheffield patterns. Compotes, Bon Bon Dishes, Sandwich Trays, Meat Platters, Tea Sets, Fern Dishes, Etc.

## THE PRIDE OF THE UNITED STATES NAVY



UNITED STATES TIN CLAD GUNBOAT CRICKET, CLOSE RANGE TARGET OF TWENTY CANNON. The Flagship in 1864



The Flagship in 1914

## Sterling Silver

The simplicity and graceful lines of the Colonial Patterns in Sterling Silver that were have won favor with the present generation. Our STRATFORD pattern is purely Colonial in weight and design and will add beauty to any dining room.

JOHN M. HUBBARD & CO.  
143 N. Main St.  
ANDERSON, S. C.  
Phone 125

## Novelties

Mesh Bags, Umbrellas, Vanity Cases, Fans, Picture Frames, Silver Pencils, Fountain Pens, etc.