



WORLD'S GREATEST EXPOSITION

NEARING COMPLETION

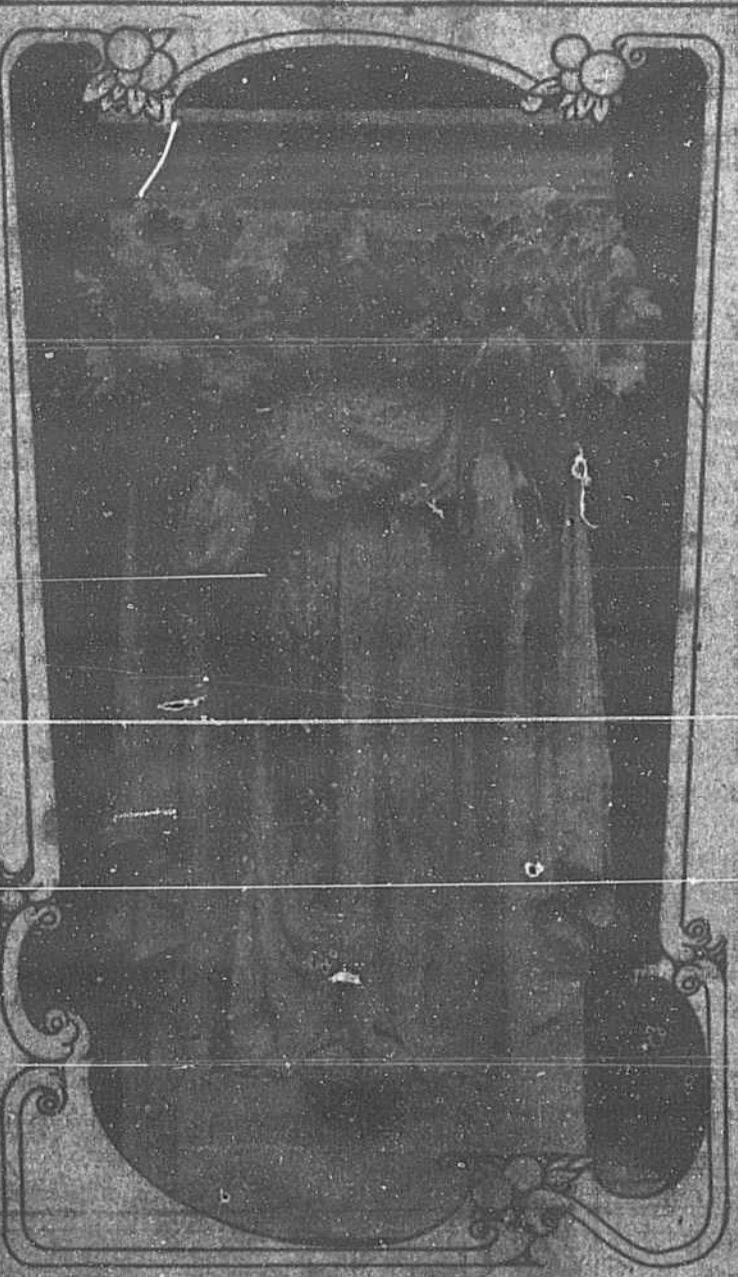
Splendors of the Panama-Pacific International Exposition Revealed by Its Present Progress.

SUPERB WORKS OF SCULPTURE AND ART IN COLOSSAL EXHIBIT PALACES FOR AMERICA'S PANAMA CANAL CELEBRATION.

GLINTS of gold from vast oriental domes, Venetian blue on minarets, prodigious works of sculpture and the arrival of notables from all parts of the globe give glimpses of the great Panama-Pacific International Exposition as it will appear when its gates swing open to the world on Feb. 20, 1915.

Not for many years will the world be enabled to enjoy so marvelous a collection of the works of contemporary sculptors. The World's Columbian Exposition at Chicago first proved that the greatest talent might be engaged to produce work of even temporary value. Since then more and more attention has been given at each succeeding exposition to sculpture as a form of decoration, and the great Panama-Pacific International Exposition at San Francisco promises to surpass even Chicago's exquisite display.

Every phase of the exposition is far advanced. Thirty-three of the world's nations will participate with government displays, Argentina leading with a government appropriation of \$1,500,000 gold.



Copyright, 1914, by Panama-Pacific International Exposition Co.

CLASSICAL FIGURE FOR GREAT EXPOSITION COURT, PANAMA-PACIFIC INTERNATIONAL EXPOSITION, 1915.

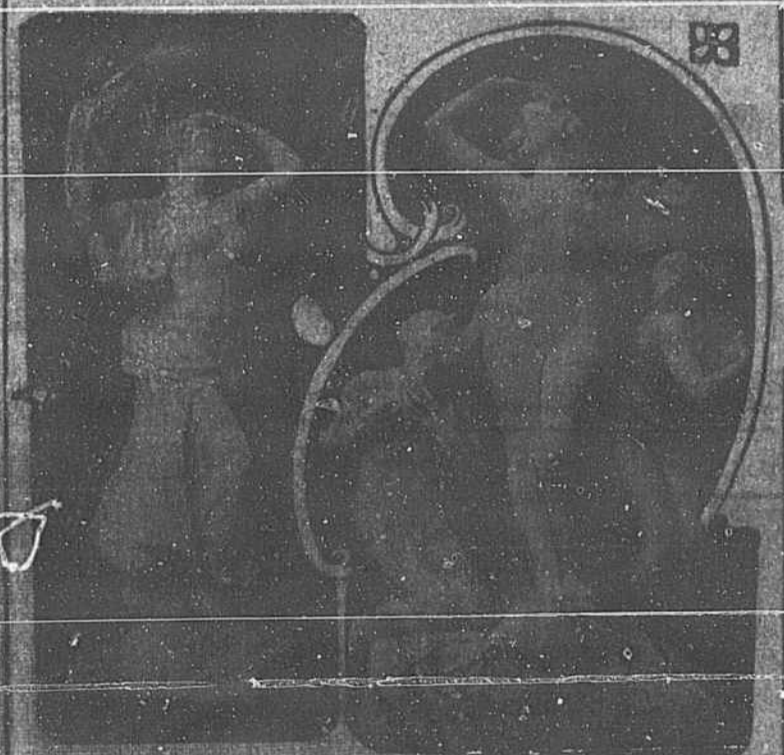
THE vast west court, the Court of the Four Seasons, at the Panama-Pacific International Exposition in San Francisco in 1915 will be adorned with a number of the finest productions of the world's greatest sculptors. Not only will two standing groups and independent pieces of statuary be set throughout the court, but its walls, its lofty colonnades, the picturesque recesses, will be embellished by much sculpture of a decorative type. The classical piece above will be used to decorate the alcove of the court and is by August Jaeger, the famous sculptor.



Copyright, 1914, by Panama-Pacific International Exposition Co.

SUPERB FRIEZE FOR WONDERFUL EXHIBIT PALACE, PANAMA-PACIFIC INTERNATIONAL EXPOSITION, 1915.

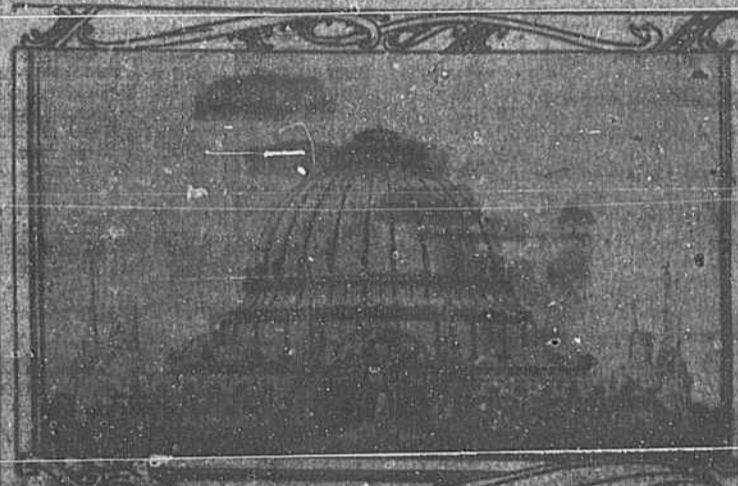
THE world will enjoy at San Francisco in 1915 the most marvellous collection of sculpture ever presented at a universal exposition. The photograph above shows an exquisite bas-relief representing the development of the industry, to be placed over the entrance of the colossal Palace of United Industries. The sculpture is huge also. The work is by Ralph Stackpole, the brilliant American sculptor, and represents one of his best creations.



Copyright, 1914, by the Panama-Pacific International Exposition Co.

"SUNSHINE" AND "SPRING" AT THE PANAMA-PACIFIC INTERNATIONAL EXPOSITION, SAN FRANCISCO, 1915.

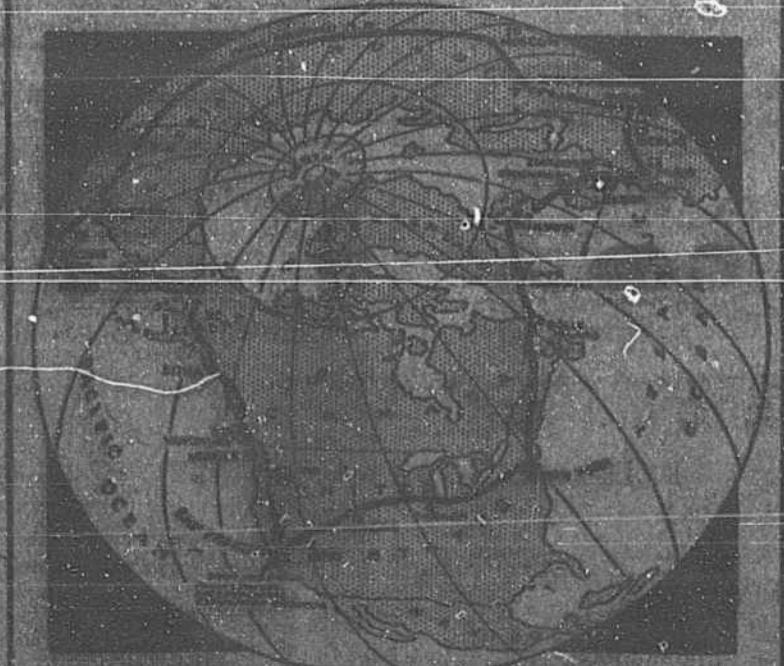
THE large group at the right is "Spring," by Felix Piccirilli, one of the artists in the Court of the Four Seasons of the Panama-Pacific International Exposition, San Francisco, 1915. At the left is "Sunshine," by J. Jackson, who has created a companion group, "Fall."



Copyright, 1914, by Panama-Pacific International Exposition Co.

COLOSSAL GLASS DOME FOR PALACE OF HORTICULTURE AT WORLD'S GREATEST EXPOSITION.

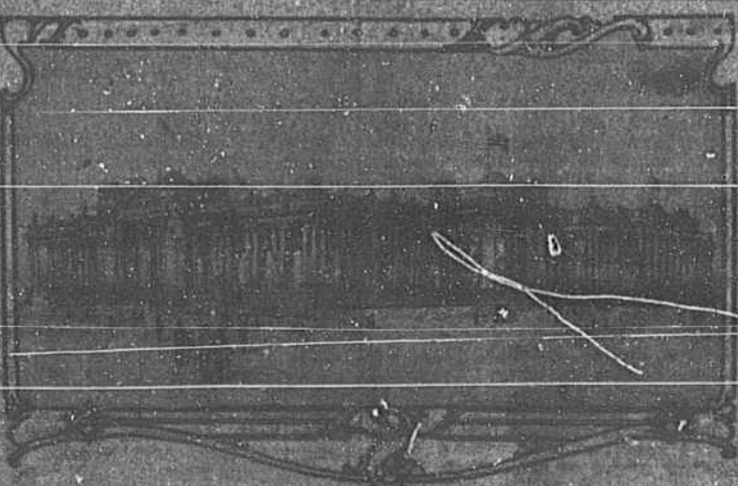
THE photograph above shows the Palace of Horticulture at the Panama-Pacific International Exposition at San Francisco in 1915. The building will be constructed almost entirely of glass. The huge dome will be 192 feet in height and 182 feet in diameter. A series of colored skylights placed within the building will play upon the inside of the dome, giving it the appearance of a magnificent soap bubble, brilliant with all the colors of the rainbow. The interior will cover five acres.



YACHTS WILL RACE AROUND THE GLOBE FROM SAN FRANCISCO IN 1915.

AFRONTIERS from all the civilized nations of the globe with every modern type of air craft determined to race will participate in an aerial race around the world, which will be a feature of the sporting events to be held during the Panama-Pacific International Exposition at San Francisco in 1915.

The race will start from the harbor of the exposition in May, 1915, and end in San Francisco. Close related to this contest has been arranged for the world's greatest aerial race, the Pacific Ocean race. A number of the world's greatest aviators, have signed their intention of entering the race. The second stage of this aerial contest will be held in San Francisco in 1915. An aerial race will consist of a contest that will be a matter of a minute, every day. The race will start from the harbor of the world and the various supply stations.



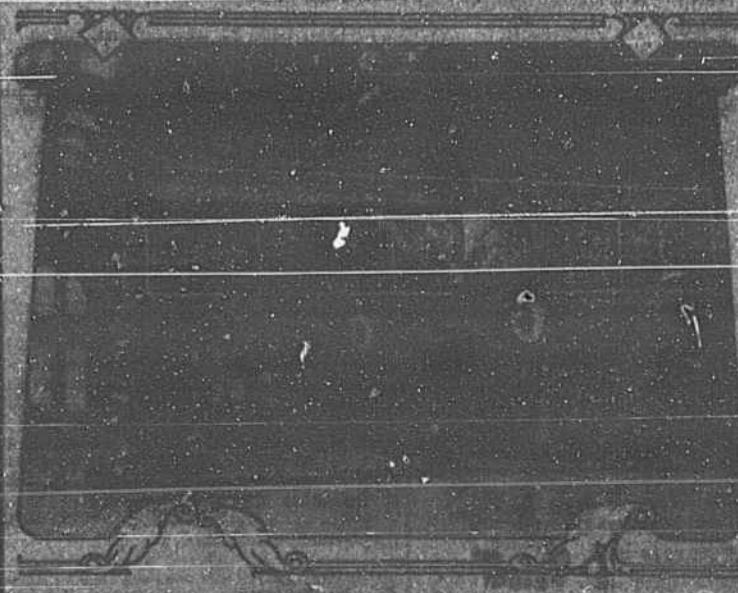
Copyright, 1914, by Panama-Pacific International Exposition Co.

CANADA AT THE PANAMA-PACIFIC INTERNATIONAL EXPOSITION, SAN FRANCISCO, 1915.

PLANS for the Canadian building at the Panama-Pacific International Exposition at San Francisco in 1915 have been approved, and the work on the great structure has started.

The Canadian Palace, as it is officially named, will be one of the largest and most imposing of the exhibit buildings, having a length of 210 feet, a width of 210 feet and a height of 50 feet, and will cost in the neighborhood of \$2,000,000. It will be the largest building ever erected by Canada at an international exposition, covering 65,000 square feet, and will house one of the most elaborate and comprehensive exhibits of the Dominion's resources and products ever shown on foreign soil. Mr. Canada's exhibition has already been voted by the Dominion the largest appropriation up to \$1,000,000, will be consummated by the government.

Canada at the Panama-Pacific Exposition is following the same policy that she obtained at former expositions—namely, the display of specimens of exhibits of the natural products of the country—agricultural, horticultural, mineral, forest and fisheries—for the purpose of showing the extensive attainments and the resources of the great mother of people who will visit the Exposition. Attention will be attracted to the Canadian exhibits and the visitors will be impressed with the grandeur of the building. From the center exhibit of Canada at the recent Chicago Exposition, and the visitors will be impressed with the grandeur of the building. From the center exhibit of Canada at the recent Chicago Exposition, and the visitors will be impressed with the grandeur of the building.



Copyright, 1914, by Panama-Pacific International Exposition Co.

THE WORLD'S FIRST INDOOR AEROPLANE FLIGHT, PANAMA-PACIFIC INTERNATIONAL EXPOSITION, 1915.

In San Francisco, the American aviator, on the grounds of the Panama-Pacific International Exposition in San Francisco. Starting at one end of the Palace of Machinery, which is 750 feet long, the aviator will take a short run, and will then take a height of 412 feet, actually being for a distance of 200 feet. At the opposite end of the building, the aviator will be standing on a level with the ground. The aviator will be standing on a level with the ground, and the aviator will be standing on a level with the ground.

The Bank of Anderson

The Strongest Bank in the County solicits your banking business. It is prepared to supply your needs in all phases of Banking. It solicits Savings accounts, Checking accounts and borrowers. All are welcome. Is your name on its books?

The BANK OF ANDERSON

The Strongest Bank in the County.

A 35c Package of Lawn Grass Seed will improve your Lawn Wonderfully

OWEN DRUG CO.

Phone 634—Cash Store.
E. B. Evans & Son,
Pendleton, S. C.

For Rent

All sorts of houses in all parts of the city.

RENTING DEPARTMENT

Anderson Real Estate & Investment Co.

Thos. F. Cartwright, Mgr.

THE BANK OF PENDLETON

Pendleton, S. C.

Will be pleased to discount from \$50 to \$500 gold notes running from \$50 to \$100 each, that will be paid during the months of October and November.

B. H. Sadler, Cashier.

DR. W. E. WOODRUFF

SPECIALIST

DISEASES OF THE EYE, EAR, THROAT AND NOSE

Office: 101 N. 2nd St., Pendleton, S. C.