

Wireless Wonder of the United States Navy.

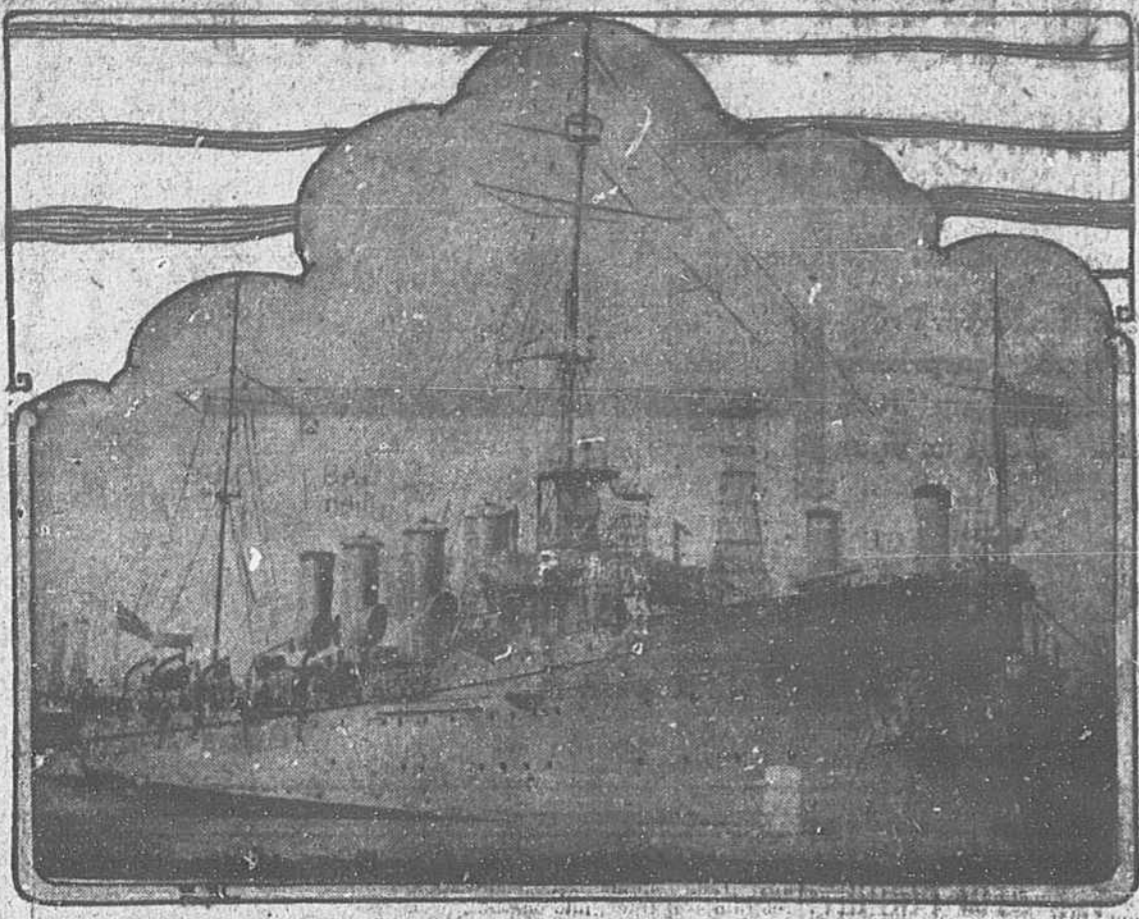


Photo by American Press Association. The scout cruiser Chester is in Mexican waters because it is equipped with the most powerful wireless in the United States navy. It enables Rear Admiral Fletcher to keep in constant and direct communication with the government wireless at Arlington. The Chester is under the command of Commander W. A. Moffet and has twenty-two officers and 351 men.

CONFIDENCE AND CHEERFULNESS ARE THE ELEMENTS OF SUCCESS

GATHER SUBSCRIPTIONS AS FAST AS POSSIBLE—YOU'VE NO TIME TO LOSE.

DO NOT BE DISCOURAGED—HOPE FOR THE BEST AND SUCCESS WILL FOLLOW—AT THE SAME TIME DO NOT BE IDLE—MAKE EVERY MOMENT COUNT—THE PRESENT TIME IS VALUABLE—GET YOUR SUBSCRIPTIONS IN EARLY

Decidedly more interest has been manifested during the past week than any previous time of the contest. The workers in the contest now seem more determined than ever to get out and work hard.

subscription and so we are rewarded for our perseverance. There are people who start out full of life and hope and ask some one to take the paper and if that someone happens to tell them they give up and think it is no use to try.

RIDER AGENTS WANTED

Advertisement for J.L. Head Cycle Company, Chicago, Ill., featuring 'No More Trouble from Punctures' and 'Self-healing Tires'. Includes a bicycle illustration and detailed text about tire benefits.

Table listing names and amounts for the 'FIRMERS' section, including Miss Fannie Spearman, Miss Sarah Spearman, Miss Lillie Mae Armstrong, etc.

Table listing names and amounts for the 'HONORARY' section, including Mrs. W. C. Black, Miss Emma Leach, Mrs. Jerry McKenzie, etc.

Table listing names and amounts for the 'ANTREVILLE' section, including Miss Fannie Killingworth, Miss Annie Belle, Miss Sadie Prince, etc.

Table listing names and amounts for the 'LEVEL LAND' section, including Miss Inez Wilson, Miss Nettie Mays, Miss Carrie Darity, etc.

Table listing names and amounts for the 'SANDY SPRINGS' section, including Miss Fannie Killingworth, Miss Annie Belle, Miss Sadie Prince, etc.

Table listing names and amounts for the 'SOUTH UNION' section, including Westminister, E. O. B. D. No. 1, Mrs. Georgia Thomas, etc.

PRACTICAL TALKS BY GOVERNMENT FARM EXPERTS

No. 12—Advice to Southern Farmers—Flue Cured Tobacco Industry.



(Official News Summary of Up to Date Matters Compiled by the United States Department of Agriculture.)

PREPARE a deep and thorough plowing, and break the soil to a depth of 12 to 18 inches, according to the soil.

Always plow in the fall before the winter rains set in. The earlier after the 1st of October the better.

Do not plow deeply or shallow in the spring. Any cultivation done after the first plowing should be shallow.

Flue Cured Tobacco Industry. At present the normal annual production of flue cured tobacco on a farm yields basis is estimated to be about 215,000,000 pounds.

We Will Be Open Sunday. But want you to buy your Clear, Clearer, Tobacco, Cigars, and Pipes during the week and on Sunday.

reader it more satisfying to the user. This type is the only one that has had any decided tendency to expand our exports in recent years.

Tobacco land should be so handled as to be kept in good life. A liberal supply of vegetable matter in an advanced stage of decay is highly desirable.

Tobacco Soil Fertilization. It is well known that the organic matter of freshly cleared or broom straw fields is of a kind well suited to tobacco.

proper fitting of the tobacco to the soil. When the soil is deep and turned under, it should not be allowed to get too cold and hard.

Do not plow deeply or shallow in the spring. Any cultivation done after the first plowing should be shallow.

Flue Cured Tobacco Industry. At present the normal annual production of flue cured tobacco on a farm yields basis is estimated to be about 215,000,000 pounds.

We Will Be Open Sunday. But want you to buy your Clear, Clearer, Tobacco, Cigars, and Pipes during the week and on Sunday.

SOUTHERN RAILWAY. Premier Carrier of the South.

Schedule Effective Jan. 18, 1914. N. B. The following schedule figures are published only as information and are not guaranteed.

Account of National Education Association. Tickets on sale Feb. 21, 22, 23; with return limit March 4th, 1914.

Account of National Education Association. Tickets on sale Feb. 21, 22, 23; with return limit March 4th, 1914.

Account of National Education Association. Tickets on sale Feb. 21, 22, 23; with return limit March 4th, 1914.

Account of National Education Association. Tickets on sale Feb. 21, 22, 23; with return limit March 4th, 1914.

Account of National Education Association. Tickets on sale Feb. 21, 22, 23; with return limit March 4th, 1914.

