



### Does Your Stomach Trouble You?

Mayr's Wonderful Stomach Remedy Is Successfully Taken in Cases of Stomach, Liver and Intestinal Ailments And One Dose Has Often Dispelled Years of Suffering



**MAYR'S Wonderful Stomach Remedy will change that Long Face!** Mayr's Wonderful Stomach Remedy can really be termed a wonderful remedy and the benefits that it gives to many of the most chronic cases of Stomach Trouble has spread its fame from one end of the country to the other.

### Remarkable Progress In Porto Rico, Indicated by Report

WHEN our troops landed in Porto Rico in 1898 that island was practically unknown to the American public, and at that time the most optimistic could not have anticipated the spontaneous development which has actually taken place in the last fifteen years.

This report shows that since 1901 the total external commerce of the island has increased some fivefold, in round numbers the exports growing from eight and a half to forty-nine millions, the imports from less than nine to nearly thirty-seven millions, while the balance of trade, adverse in 1901 by a small amount, is now more than twelve millions annually in its favor.

Although sugar amounted to more than half the total exports, or \$28,619,158, an increase made possible only by the influx of American capital and machinery, together with the exceptionally favorable underlying conditions, more interest attaches to the fact that Porto Rican coffee, of the excellence of which every native is proud has shown a proportionately more rapid increase than sugar during the last five years, the exports for 1913 being

## January Is A Month Of Bargains

...And Nowhere will you find more Genuine Bargains than Here...

### GREAT SALE OF WOMEN'S SUITS

and Coats---also Children's and Junior Coats, every garment in our store now is positively reduced to less than maker could sell them to us for. It's a sale that's making a history.

CHILDREN'S COATS Sizes 2 to 6 Years, as low as 98c	MISSES' COATS Sizes 6 to 14 years, as low as \$1.29	JUNIOR COATS Sizes 13 to 19 years, as low as \$1.98	LADIES' COATS All Sizes, 34 to 44, as low as \$2.98
---	--	--	--

**100 Tailor-Made Suits at Record-Breaking Reductions**

For Ladies' Suits that Sold up to \$16.50	For Ladies' Suits that Sold up to \$20.00	For Ladies' Suits That Sold up to \$25.00
---	---	---

**THE TALK OF THE TOWN**  
Woolen up to \$18.00 Suits or Overcoats at \$9.75

**SHOE BARGAINS**  
Children's Shoes, Size 2 to 6, all colors, as low as 39c  
Misses' Shoes, Lace and Button, all sizes, as low as 98c pair  
Ladies' Shoes, all sizes, any style, low as \$1.39 pr  
Boys' Shoes, up to size 2, all as low as \$1.19 pr.  
Men's Shoes, all sizes, as low as \$1.48 pr.

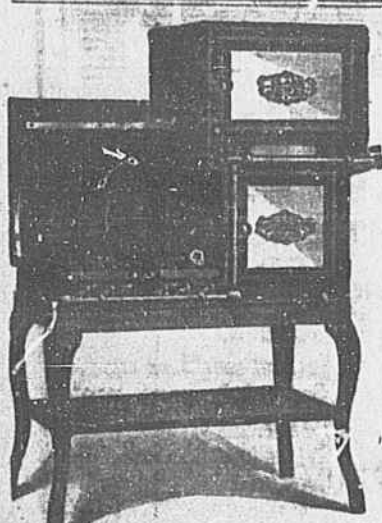
**A Special Lot of Boys' Suits and Over-Coats — Specially Priced.**  
A lot of boys' suits and over coats, the surplus stock of a large Baltimore manufacturer that we bought at a price, are on sale now, at prices that we feel will interest you.

Percales, 10c and 12 1-2 cents quality, in short length, special ... 7c yd

**B. FLEISHMAN & BROS.**  
UP-TO-DATE DEPARTMENT STORE  
ANDERSON, S. C.

**Good Quality Bleaching as long as lot lasts, will go at ... 5c yd**

**GENTLEMEN--**  
When in need of a FINE TAILOR-MADE SUIT cut, trimmed and shaped to your figure, call on SALLA TAILORING CO., 126 W. Benson St., where your credit is good. Largest assortment Woolens in the City to select from and lowest prices.  
...CASH or CREDIT...  
**SALLA TAILORING CO.**  
Under Maple Hall  
126 W. Benson St.



You will be doing yourself a good turn by installing a GAS RANGE. We sell them under the strongest guarantee.  
Easy terms—\$2 down and \$2 per month.  
**Anderson Gas Co.**

- CASEY & FANE**  
ARCHITECTS  
Anderson, S. C.  
Brown Office Building, Second Floor. Phone 269.
- SAYRE & BALDWIN**  
ARCHITECTS  
Bleckley Bldg, Anderson, S. C.
- Citizens National Bank Bldg, Raleigh, N. C.

**JULIAN E. CLINKSCALES**  
ATTORNEY AT LAW.  
Loans Negotiated on Real Estate  
Office: Watson-Vandiver Building.  
ANDERSON, S. C.

### My Business is Growing Fast

I was compelled to add one more room to my office, it is now bigger and better than before.

### Why?

BECAUSE—The people have begun to learn that they can get their eyes examined better. That they can get their glasses fitted better. That they can get more service, a straight, square, honest deal every time when they come to my office.

**DR. I. M. ISRAELSON**  
OPTICIAN.  
Office over Evans Pharmacy No. 8 ANDERSON, S. C.

**CHICHESTER'S PILLS**  
THE DIAMOND BRAND  
SOLD BY DRUGGISTS EVERYWHERE

### Schedule Effective May 25th, 1913.

20 Greenville and Belton...7:35 a. m.  
22 Greenville and Belton...11:50 a. m.  
15 Charleston, Columbia and Belton, through sleeper to Belton...11:50 a. m.  
12 Atlanta, Walhalla and Seneca...8:31 a. m.  
25 Greenville and Belton...1:20 p. m.  
10 Atlanta, Walhalla, and Premier Carrier of the South.  
Arrival and departure of trains from Anderson, S. C.

N. B. the following schedule figures are published daily as information and are not guaranteed.

### Arriving From Time IN CONNECTION WITH BLUE RIDGE RAILWAY.

Seneca...5:52 p. m.  
17 Charleston, Columbia and Belton. Through coach from Columbia to Walhalla...6:03 p. m.

### Leaving For

20 Belton, Greenville...7:40 a. m.  
22 Belton and Greenville...9:20 a. m.  
15 Belton and Greenville...9:25 p. m.  
10 Belton, Charleston, Greenville and Columbia...5:52 p. m.  
12 Belton, Columbia, Charleston and Greenville...8:31 a. m.  
10 Seneca, Walhalla and Atlanta...11:50 a. m.

Coach from Columbia to Greenville, S. C.

W. R. Taber, A. J. A. Greenville, S. C.

W. E. McGee, A. J. A. Columbia, S. C.

H. F. Cary, G. P. A., Washington, D. C.

S. H. Hardwick, P. T. M., Washington, D. C.

### Building Is All Ready.

The new Land Building on the beautiful exposition grounds of the National Conservation Exposition is completed. It stands on a terrace; it is beautiful in design, beautiful in execution. In the rear of the building is an auditorium that will seat 3,000 persons. The building is spacious and class constructed, especially for the Land Show and all that goes with it. On the lower floor of the big white building the land companies and the land departments of the various railroads will have their displays. On the upper floors will be the educational exhibits, and these will include the exhibits of the different experiment stations of the United States Department of Agriculture in the Southern States.

### Lessons of the Show.

You are going to get ideas on how to improve the grade and yields of plant and animal products. You are going to see the soil of the Southern country, and so arranged to teach you many valuable lessons. You will see exhibits that have to do with the impoverishment of the soil. You are going to see the best and most modern methods of crop rotation illustrated. You are going to see actual demonstrations of the way in which you can plant and raise little known products and thus increase the earning capacity of your lands.

You are going to see—What is the use of going farther? The sentiment that the Land Show at the National Conservation Exposition will be the biggest and best ever held in the South.

The railroads are preparing to make very extensive exhibits—the most extensive they ever have made at a Southern show.



### TREASURES IN SAN JUAN, PORTO RICO

\$3,511,316, an increase of 26 per cent over the preceding year. Proof that the foundation of a diversified agriculture has been laid is found in the increase of oranges, pineapples, grapefruit and other fruit from a total of \$109,801 in 1901 to \$2,377,702 in 1912 and \$3,120,919 last year. It is stated that in 1898 there was but one building in the islands especially erected for school purposes. The total enrollment in the public schools was but 26,000, and 80 per cent of the entire population was unable to read or write. A million souls with this high percentage of illiteracy were domiciled within 3,000 square miles, a population more dense than that of any part of the United States, except a few manufacturing districts.

Instead of one schoolhouse erected for that purpose, there are today 105 graded school buildings, many of which compare favorably with the better class of school buildings in the cities of the United States, and 264 rural school buildings. The school enrollment has increased to 141,728, and the general percentage of illiteracy has been reduced to 10 per cent.

No less than 1,000 cases of uncinariasis (hook worm) have been treated, from which approximately 60,000 complete cures have been effected. Steady progress is being made in improving the general health, as shown in the decrease in the death rate from 24.02 per thousand during the previous year to 22.1 per thousand.

An improvement in the general appearance and sanitary conditions in most of the municipalities is evident, while the development of public works is apparent in better streets, water supplies, sewer systems, hospitals and otherwise.

The finances of the Porto Rican government are reported to be in excellent shape, and as practically all of the property tax goes to the support of municipal governments and school boards the increase in assessed valuation has less than \$80,000,000 in 1905 to \$179,271,023 in 1913 has greatly improved the financial condition of the various towns. Besides, the legislature has provided means for municipal loans, so that in addition to the valuable local improvements made in recent years, applications from municipalities for loans for other public works aggregating some four and a half millions are now under consideration.

The public works undertaken by the Insular government have resulted in a system of modern highways totaling 3,010 kilometers and in an irrigation system which will make 40,000 acres of semiarid fertile land, among the most productive and dependable in the island.

## CLASSIFIED ADVERTISEMENTS

Advertisements in this department will be classified and run at the following rates: 25 words or less, one time, 25c; three times for 50c; eight times for \$1.00. For more than 25 words the same rate will apply.

### WANTS

**GIRLS WANTED** to sew, light work. Will pay board while you are learning. Anderson Overall Factory, Anderson, S. C. 12-12-2m

**WANTED TO BUY**—Will buy any time, fat cattle, hogs and calves. I have customers for and contract to furnish. I buy hides and tallow. The Tanners want my hides. 121 W. Whitner St. Phone 694r 694. R. D. HENDERSON At Lily White Market. The wholesale and abattoir man. 1-9-11

**SALESMAN WANTED** to look after our interest in Anderson and adjacent counties. Salary or commission. Address The Harvey Oil Co. Cleveland, O. 1-9-11

### WANTED

50 head good mules, old and young, within the next ten days or two weeks. Bring them to The Fretwell Company's stables. G. W. RADER. 1-9-11-tue-fri

### FOR SALE

**FOR SALE**—House and lot where I now live and vacant lot adjoining on east. House has eight rooms and kitchen, butler's pantry, bath room, electric lights and sewerage. Price right, terms right. L. E. NORRIS. 1-9-11

**FOR SALE**—I have some nice, large white Wyandottes for sale. Write for prices.—W. W. Thompson, Lown-desville, S. C. 12-23-1mo, p

**FOR SALE**—Farm, 165 acres, beautifully located, near city, good dwelling, four tenant houses, two barns, grain house, land level and easy of cultivation, at a price that is a bargain. Come to see us quick of write. Burris Realty Company. 1-9-11

### PUBLIC SALE

We will sell at public auction at the Anderson court house on Monday February 2, at the usual time, one house and lot in town of Belton, in estate of Mrs. M. J. Gambell. Purchaser to pay extra for papers.—R. R. Keaton and R. A. Keaton, Executors. 1-15-11

### BUSINESS LOCALS

R. F. Martin will be at Anderson on Saturday. When writing, address care McCullough, Martin and Dwyer, Lawyers, Greenville, S. C.

Select seed Potatoes—Irish, Cobler and Red Bliss—peck 40 cents; per bag \$3.50. Plant as early in January as possible. FURMAN SMITH. Phone 241. The Seedman.

### NOTICE

A special teachers' examination will be held at the court house Saturday, Jan. 17, 1914, beginning at 9:00 a. m. All teachers expecting to take the teachers' examination are expected to be present at this time. J. B. FELTON, County Supt. of Education.

### NOTICE OF FINAL SETTLEMENT

All persons holding claims against the estate of L. A. Hunnicutt, deceased, are hereby notified to present them at once, duly attested and also all persons indebted to said estate will also please settle same immediately with the undersigned. Notice is also given that I will on January 30th, 1914, at 11 o'clock a. m. apply to the probate judge for Anderson county for a final settlement of said estate and a discharge from my office as executor. 1-2-11. M. A. HUNNICUTT, Admr.

### NOTICE OF FINAL SETTLEMENT

All persons holding claims against the estate of Ezekiel Harris, deceased, are hereby notified to present them at once, duly attested, and also all persons indebted to said estate will also please settle same immediately with the undersigned. Notice is also given that I will on January 27th, 1914, at 11 o'clock a. m. apply to the probate judge of Anderson county for a final settlement of said estate and a discharge from my office as executor. J. C. HARRIS and J. J. MAJOR, Executors. 1-2-11

### NOTICE TO CREDITORS

All persons having claims against the estate of Mrs. Amanda Gambell, deceased, are hereby notified to present them properly proven to the undersigned within the time prescribed by law and those indebted to make settlement. J. N. GAMBELL, Admr. Piedmont, S. C. -313p

### SPECIAL GINNING NOTICE

Beginning January 5th, we will run our gins only on Monday, Tuesday and Wednesday. 1-5-11. FARMERS OIL MILL.

### FOR SALE

**FOR RENT**—One six room house on Welch Ave. Apply to A. L. Welch. 1-9-11

### ASSESSMENT NOTICE

This office will be open to receive return of real and personal property for taxation for the next fiscal year from the first day of January, 1914, to the 20th day of February, following, inclusive. All real estate must be returned this year. All transfers of real estate must be specified in the proper space for listing same on return, to whom sold or from whom bought. The township board of assessors are required by law to list for all those that fail to make their own return within the time prescribed. Hence the difficulty of delinquents escaping the 50 per cent penalty as well as the frequency of errors resulting from this practice. By all means make your own returns, and thereby save expense and trouble. Ex-Confederate soldiers are exempt from poll tax. All other males between the ages of 21 and 60 years, except those incapable of earning a support from being maimed or from any other cause, shall be deemed taxable polls. For the convenience of taxpayers we will also have deputies to take returns at the following places: Tugaloo, Tuesday a. m., Jan. 6th, 1914. Cromers Store, Tuesday p. m., Jan. 6th, 1914. Townville, Wednesday, Jan. 7th, Hollands Store, Thursday, Jan. 8th, 1914. Barnes, Tuesday, Jan. 13th, 1914. Iva, Wednesday, Jan. 14th, 1914. Starr, Thursday, Jan. 15th, 1914. Honea Path, Monday, Tuesday, Jan. 19-20, 1914. Half day at cotton mill, L. N. Martins store, Wednesday, Jan. 21, 1914. Pendleton, Thursday-Friday, Jan. 23-24, 1914. Half day at cotton mill, Five Forks, Monday, Jan. 26th, 1914. Bishop Branch, Tuesday, Jan. 27th, 1914. Auhun, Wednesday, Jan. 28th, 1914. Denver, Thursday, a. m., Jan. 29th, 1914. Sandy Springs, Thursday, p. m., Jan. 29th, 1914. Piercetown, Friday, Jan. 30th, 1914. Mt. Airy, Tuesday, Feb. 3, 1914. Slattown, Wednesday, Feb. 4th, 1914. Cely's Store, Thursday, Feb. 5th, 1914. Wyatt's Store, Friday, Feb. 6th, 1914. Wington Store, Saturday, Feb. 7th, 1914. Piedmont, Monday, Feb. 9, 1914. Pelzer, Tuesday-Wednesday, Feb. 10-11, 1914. One day at cotton mill, No. 4. Williamston, Thursday-Friday, Feb. 12-13. One day at cotton mill, Belton, Monday-Tuesday, Feb. 16-17, 1914. One day at cotton mill. All new school lines for 1914 school districts must be in the hands of the auditor by the first of April, so they can be listed in the right school district. WINSTON SMITH, Auditor Anderson County.

### FOR SALE

Forty-eight acres valuable farm land situated within one mile of the city limits of Easley, S. C., near Alice cotton mills. This property has a new eight-room dwelling house, ample out-buildings and a good barn on it. The land is very strong and is especially adapted to truck farming. For prices terms, etc., call on or write to Jos. E. Leach, Attorney, Easley, S. C.

### FINE FARM FOR SALE

Fine farming lands for homes. Two farms 100 acres and one of 200 acres. Near Lebanon school and church. Fresh lands and well improved. Good terms and long time. You can buy now, taking over rent contracts for 1914, or buy for fall of 1914. See Bob King or Ben F. Martin. 12-9-11.

I still have a lot of good land in tracts to suit you. Prices varying from ten dollars to thirty-five per acre. All well located. Write to me at McCormick, S. C. Joe F. Edmunds.

### Wedding Bells?

LET US SUPPLY THE INVITATIONS.

### WEAR A SMILE!



Buy an L. C. Smith & Bros. TYPEWRITER

and you can wear a smile all the time as they enable you to turn out the neatest and best class of work. Let us show you our latest Model No. 5 and you will be convinced. We sell all other makes of re-built and second hand machines, also repair all other make machines, and our work is done by first class experienced workmen. Give us a Trial.

J. E. CRAYTON & CO., Dealers, Charlottes, N. C.

W. O. ULMER, Agent, Anderson, S. C.

**Lots That Please**  
We have for sale 25 beautiful lots on Tribble Street. TERMS ARE EASY ON THESE LOTS. LOOK AT THEM.  
**J. Furman Evans Company**  
Evans Building.