

MASTER PRINTERS TO MEET IN JULY

State Association May Join the United Typothetae—Coming To Anderson

South Carolina Master Printers' association will hold its annual convention at the new Chick Springs hotel July 8th, and will visit Anderson when the State Press association meets here.

Foremost of importance will be the question of affiliation with the United Typothetae and Franklin Clubs of America.

This is a national organization composed of printers from all parts of America. It is argued that to arrange a basis of membership so that each South Carolina printer is directly related to the national body is of tremendous importance.

The State Press association meets at Chick Springs the same week as the master printers, and as nearly every publisher is also a job printer, it is expected that the convention will be well attended.

Following are the officers of the association:

- C. C. Miller, Columbia, President; J. Homer Gulla, Anderson, Secretary; C. E. Band, Spartanburg, Treasurer; B. H. Peace, Greenville, First Vice-President; H. G. Osteen, Sumter, Second Vice-President; A. B. Jordan, Dillon, Third Vice-President; Mayor Frank, Charleston, Fourth Vice-President.

CLINKSCALES IS ENCOURAGED

Candidate For Governor Well Pleased Over Outlook—Favors District Campaign

Rock Hill, April 15.—Prof. John G. Clinkscales, of Wofford College, candidate for governor, returned home on Monday morning after spending a couple of days in this community. Prof. Clinkscales made an educational address at Friendship school Saturday night before a large gathering of the patrons of the school.

Prof. Clinkscales was seen by a Herald man and asked regarding his candidacy. He stated that he was greatly encouraged at the interest shown in his behalf in all parts of the State. While in the city he met a large number of citizens just to get acquainted, he said.

Prof. Clinkscales stated that he was in favor of the district meeting plan, whereby all the candidates for state offices should meet at some central place in each of the congressional districts and discuss the issues, as the candidates would have more time to discuss the issues than if they used the county to county campaign plan.

Prof. Clinkscales stated that he was receiving more invitations than he could accept, as he did not propose to allow his candidacy to interfere with his school duties.

Prof. Clinkscales stated that he was receiving more invitations than he could accept, as he did not propose to allow his candidacy to interfere with his school duties.

Prof. Clinkscales stated that he was receiving more invitations than he could accept, as he did not propose to allow his candidacy to interfere with his school duties.

Coming—The Redpath Chautauqua—7 Big Days

Including a Two Day Grand Musical Festival

BOHUMIR KRYL AND HIS BAND—THE BEN GREET PLAYERS

- Grand Opera, Light Opera, Bell Ringing, Magic, Oratory, Monologues, Humor, Instruction, Inspiration, Literary Lectures, Playground Worker, A Musical Program Every Day

The season tickets purchased by the local committee, and now for sale, may be had while they last at \$2.00. All season tickets thereafter will be \$2.50. Attendance by single admission on each entertainment would exceed \$8.00.

[SEE PROGRAM FOR COMPLETE LIST OF ATTRACTIONS]

Forty States and Ten Foreign Countries Represented at a Redpath Chautauqua In Michigan



CHAUTAUQUA SCENE AT BATTLE CREEK, MICH.

WHEN the Redpath Chautauqua was at Battle Creek, Mich., last season on one day there were representatives present from forty different states and ten foreign countries.

There were in the audience 100 nurses and 800 guests from the Battle Creek Sanitarium. From the School of Home Economics 100 girls were present.

It is estimated that during the day 4,000 citizens of Battle Creek visited the Chautauqua. The principal attraction of the day's program was Bohumir Kryl and his Band.

The audience was a most enthusiastic one. Mr. Kryl was called upon to play four encores.

24 inches apart in the row, with 6 feet rows. When plants have formed the third leaf, thin out to one plant to a place.

Early Hanover, Rockford, Perfection and Acme are good varieties. Sow one ounce of okra seed in rows four feet apart, planting the seed one inch deep in hills 15 inches apart in the row.

Salad or vegetable oyster is a valuable vegetable and should be more widely grown in this state. Sow a quarter of a pound of seed about the middle of April in rows three feet apart.

Beans should be planted at once. Plant a pint in hills six to eight inches apart and two and a half to three inches deep in rows three feet apart.

Plant one packet of cucumber seed in hills three feet apart, with rows 4 to 5 feet wide and 1 to 2 inches to the hill.

Plant one packet of cucumber seed in hills three feet apart, with rows 4 to 5 feet wide and 1 to 2 inches to the hill.

LIFE UNDERWRITERS

Annual Meeting and Banquet to be Held in Columbia

Columbia, April 15.—It was announced today that plans are now being made for the annual banquet and convention of the South Carolina Life Underwriters' Association, to be held in Columbia.

The association membership includes a representative body of the life insurance men doing business in South Carolina and the membership is not restricted in any manner.

The object of the association is to advance the interests of life insurance by the cultivation of social relations between representatives in the field.

Officers of the association include F. H. Hitt, Columbia, President; C. C. Edwards, Chester, and J. C. Dillingham, Charleston, Vice-Presidents; W. S. Hendley, Columbia, secretary-treasurer.

The members of the association include the following life insurance men of Anderson: M. M. Mattison, J. W. Dickson, Calhoun Harris, D. P. Sloan and Company, Fred W. Felkel, J. H. Owen and H. J. McGee.

assessed for taxation at \$153,000,000, and all property at \$296,000,000. The tax burden is heavy solely because it is unequal and unfairly distributed.

The land worth \$5, \$10 or \$15 an acre is usually assessed at from \$3 to \$7 an acre. This is the land of the small farmer trying to pay the mortgage on it and unable to improve it except by slow and painful toil.

Not until the tax system and especially the assessing system is reformed in South Carolina can progress be made in improving the condition of the man struggling to own his own home.

One-half of the white voters of South Carolina own no land; if we are to have a state worth living in, they are the people who deserve the attention of the leaders in public affairs.

Abbeville, April 14.—S. B. Greene, master carpenter of the Seaboard Air Line Railway was almost instantly killed near here today when his motor car was struck by a fast freight.

Abbeville, April 14.—S. B. Greene, master carpenter of the Seaboard Air Line Railway was almost instantly killed near here today when his motor car was struck by a fast freight.

"FLOWER DAY" IS THE PROGRAMME

For the Next Trades Day To Be Given By the Anderson Chamber of Commerce

The trades extension committee of the Chamber of Commerce Thursday afternoon announced the following program for Trades Day, Tuesday, April 21, next.

- 10:20—Opening at Palmetto Theatre. 10:35—Announcements—by Chairman, Jno. Frank. 10:45—Invocation—Rev. D. W. Dodge, Pastor Central Presbyterian Church. 10:55—Illustrated address with slides on Civic development in country, by F. M. Burnett, Sec'y Y. M. C. A. of Anderson. 11:30—Address—Horticulture—W. J. Sheely, Gen. Agt. So. Ry., Washington, D. C. 12:00—Moving Picture Reel, complimentary of Palmetto Theatre, subject: Floral Parade. Flowers galore.

Such beautiful, beautiful hands, They're neither white nor small, And you, I know would scarcely think that they were fair at all.

Such beautiful, beautiful hands— Though heart weary and sad, These patient hands kept tolling on That the children might be glad.

Such beautiful, beautiful hands, They've grown feeble now;

The Chamber of Commerce will give away a prize of one \$20 solid brass Egyptian Vase to the lady, any age, who places on exhibit at the Chamber of Commerce on or before 12 o'clock the best bouquet of flowers, of any kind.

The exercises are open to men as well as women and all will occur at the Palmetto Theatre except the judging of the flowers, which will be held at 2:30 P. M. at the office of the Chamber of Commerce.

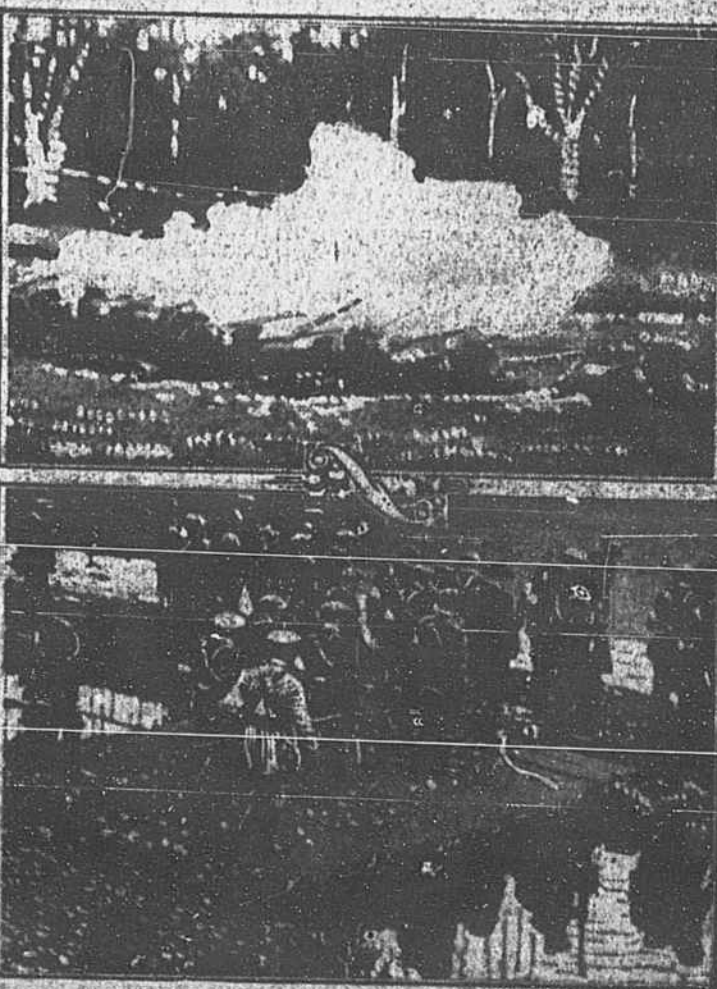
For time and pain have left their mark On hand, and heart and brow. Alas! alas! the nearing time, When 'neath the stars, out of sight, These hands will folded be.

But, oh! beyond this shadowed lamp, Where all is bright and fair, I know, full well, these dear old hands Will palms of victory bear

Flow over golden sands; And where the old grow young again 'Till clasps my mother's hands.

The tonnage of the merchant vessels launched throughout the world in 1913 showed increases over the preceding year and in fact over any previous year, being estimated at \$132,000 tons, as against 2,001,000 tons for the vessels launched in 1912.

Ulster Sham Battle Scenes: Armed Orangemen Are Ready



ENGLAND was prepared for trouble at any time in Ulster over the home rule bill when it appeared as if the movement stood a good chance of becoming a law.

Premier Carrier of the South IN CONNECTION WITH BLUE RIDGE RAILWAY.

Schedule Effective Jan. 18, 1914

N. B. The following schedule figures are published only as information and are not guaranteed.

Table with columns for train numbers, routes, and arrival/departure times. Includes routes like Greenville and Belton, and Belton and Greenville.



General Passenger Agent, Greenville, S. C. Reduced Round Trip Fares, Anderson, S. C.

Account of National Education Association. Tickets on sale Feb. 21, 22, 23, with return limit March 4th, 1914.

Account Mardi Gras Celebration. Tickets on sale Feb. 17th to 23rd, with return limit March 1st, 1914.

Account of National Drainage Congress. Tickets on sale April 20, 21 and 22, with return limit April 19th.

Account of May Celebration. Tickets on sale May 17 to 21st, with return limit May 24th.

Account of U. C. Y. Reunion. Tickets on sale May 23, 24, 25 with return limit May 18th.

Account of Meeting of the Mystic Shrine. Tickets on sale May 7 to 12th with return limit May 20th.

For complete information, Fullerton reservation call on ticket agents or write W. H. Taber, P. O. Box 17, Columbia, S. C.