

A CLUB BOY'S COMPOSITION ON PRACTICAL HORTICULTURE

How To Bud Peach Trees

Professor went with us to the Experiment Station and taught us how to bud, graft and propagate trees. On the way, we went through the orchard and saw how to mound trees to kill peach borers. When we got to the Station, Professor told us how to bud peaches first of all.

In the fall about November, plant peach seed in a box of sand or in the garden. The seed come up in the spring and by June, July, or August they are ready to bud. The first thing to do is to get a peach twig of this year's growth, which should be about the size of a pencil. Get this twig from some known variety of peaches, and cut the leaves off about one-third of an inch from the bud. It will not do to cut the leaves off even with the buds, as no protection will be left the bud. This is called a bud stick. Put the bud stick in a wet sack and wet some grass (raffia) to wrap around the tree when the bud is inserted.

Go to the tree and place the left foot forward and put the right knee in the T on the three and wrap it care-free, about one-third of the way, and split straight down the tree for about one inch. This should be the exact shape of a T.

Take the bud stick and find a wood bud. A wood bud is the shape of the end of an egg. The bloom bud will only make a bloom, which will do no good. Cut the bud off the bud stick so as not to injure it, and place this in the T on the three and wrap it carefully around the tree where the bud was put in. In fourteen days, cut the grass or wrapping material on the opposite side from the bud. If trees are budded in July they will be ready to plant by that fall one year. If budded in June they are ready to be planted the following fall. These are called "June bud" trees.

How to Graft Apple Trees

To graft apple trees the first thing to do is to have young trees a little larger than a pencil. Any kind of apple seed will do to plant to grow these trees, which should be planted during the fall.

Any time until the 15th of March, these trees can be grafted. Cut the little trees off about six inches above the ground, pulling the knife upward and making a smooth slope or slant about one and one-half inches long. Split straight down the pith for about an inch. Then take a limb of the current year's growth from any tree of a good variety, and cut just the reverse of the above, so that the two pieces will fit together. It would take a picture to show exactly how that is done. Wrap this well with grass or wax card. In two years the trees are ready to plant in the orchard.

How to Propagate Grapes and Figs

Take small pieces of grape vines about pruning time (during fall and winter), and plant them in a box of sand or in a well drained place. When they are about two years old they are ready to plant to the vineyard.

In the winter, plant small pieces of fig limbs or throw dirt up around the roots of the old fig trees and they will put out shoots. Pull up these shoots, which should have roots ready for planting in the orchard.

How to Cut, Plant, and Spray Irish Potatoes

Irish potatoes should be cut so that the eyes will have plenty of food. When the eyes have plenty of food

LEXINGTON PROOF

Should Convince Every Lexington Reader.

The frank statement of a neighbor, telling the merits of a remedy, bids you pause and believe. The same endorsement by some stranger far away commands no belief at all. Here's a Lexington case. A Lexington citizen testifies. Read and be convinced.

D. S. Smith, Main St., says: "I was in bad shape with my kidneys several years ago. I could hardly get up or down and even walking caused me misery. I had a too frequent desire to pass the kidney secretions, which were scanty, and caused a burning sensation. I tried many kidney remedies without getting any relief. Finally a friend recommended Doan's Kidney Pills, and I used them. By the time I had taken the first box, I received much relief and further use made me well enough to stop taking them. Whenever I have any trouble this way now, I use Doan's Kidney Pills and they give me splendid relief."

Price 60c. at all dealers. Don't simply ask for a kidney remedy—get Doan's Kidney Pills—the same that Mr. Smith had. Foster-Milburn Co., Mfrs., Buffalo, N. Y.

they will not die. They should be planted in rows and packed as soon as they are planted. When they are planted in rows they can be cultivated and will make a greater yield than those that are not cultivated. When the bugs get on the potatoes, spray them with arsenate of lead or a lead spray mixture.

Oscar William Lever.

FARMERS WILL SUE FOR ALLEGED POTASH DAMAGE

Many Prepare To File Suits—Orangeburg Cases Have Been Put In Lawyers' Hands.

Information has been received at the department of agriculture in Columbia that farmers of several sections of the state are preparing to bring damage suits against the distributors of Trona potash, because of the damage to crops from the use of the American made product.

The loss from the use of Trona potash in some sections of the state will reach far into the thousands. Dr. Summers, of the department of agriculture, made an investigation and

took a series of photographs in Darlington county, and the conclusion reached was that the loss from potash in that county alone would reach hundreds of thousands of dollars. In many parts of the state crops have been seriously injured by the use of the potash.

Trona potash is mined in California. It is handled by a New York concern. The suits will probably be filed against the local fertilizer and potash dealers.—The Columbia Record.

You put the lid on waste every time you seal a jar of fruit or vegetables.

WHEN BUSINESS IS DULL.

When business is dull we cannot suggest anything better than the use of printer's ink in the columns of The Dispatch-News. If you should have anything you want to sell or something to buy and don't feel like using display ads, then why not try a little want ad? The result is almost instantaneous. Try them.

666 quickly relieves Constipation, Biliousness, Loss of Appetite and Headaches, due to Torpid Liver.—Adv.

ATTENTION PARENTS

IS your boy or girl going to any South Carolina College or Preparatory School this fall, as a pay student? If so write us, we can save you money. Give the name of the school.

Carolina Farmer & Stockman

8 Exchange Bank Building

CHARLESTON,

SOUTH CAROLINA

P. J. O'NEILL, M. D.



My office is specially and completely equipped to treat diseases of Stomach, Kidney and Bladder, Nerves and Skin, Rectal Conditions, Piles (Treated Painlessly Without Operation.)

What You Want to Know: Can you be cured? How long will it take? Will it be permanent? What will it cost? Consult me FREE.

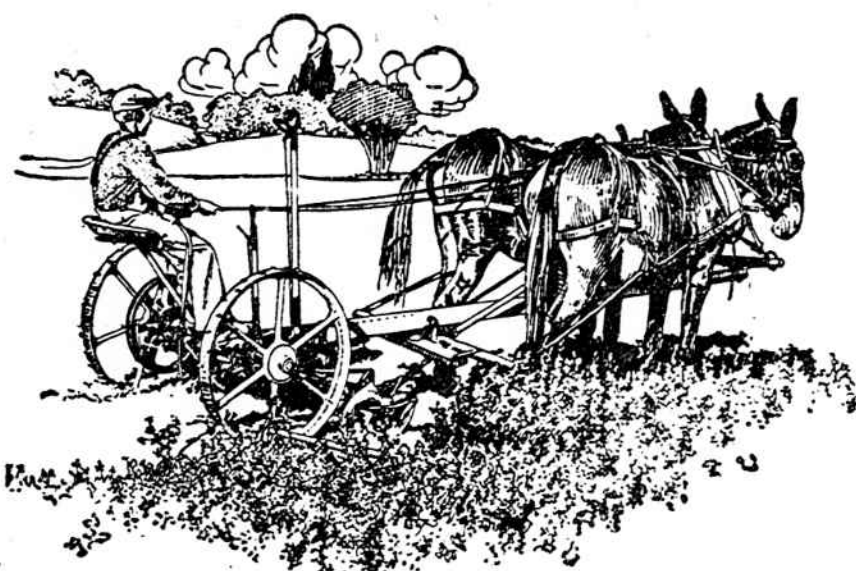
Special effort is made to avoid unnecessary delay in handing out of town cases.

I am individually in charge of my office, having no medical assistants or associates. Therefore your ease if placed in my hands, receives direct attention and you achieve results as rapidly as possible under high class treatment.

I personally examine every patient thoroughly, using X-Ray when necessary.

Hours: 9 a. m. to 7 p. m. Sundays 10 to 2.

Suite No. 7 Carolina National Bank Building Cor. Main and Washington Sts. COLUMBIA, S. C.



A Boy Can Run a John Deere Dain Mower

While you are getting things in shape for making hay, put your boy on the John Deere Mower and let him do the cutting—he will do it just as well and just as easily as you can do it.

Because of the powerful lift, he can easily raise the cutter bar to pass over any field obstruction or to extreme height, when necessary. A foot lever, working in conjunction with the hand lever, makes the lift simple and easy.

He will never have to back up to get a start, even in the heaviest hay. The knife starts cutting the instant the mower is thrown in gear—no lost motion.

You will see big advantages in the drive on this machine—it's extremely simple—the gears are so placed that one set holds the other set in mesh constantly. The John Deere will cut all of the grass for years to come—a simple adjustment takes up all lag in the cutter bar, without affecting the centering of the knife. If the knife ever needs re-centering, a special adjustment is provided.

The John Deere is the simplest, most powerful and best-built mower we have ever seen. We know it will appeal to you.

Come in—it's to your advantage, to know all about this mower before you buy. While at our store, we want you to see the rest of our line of haying and harvesting machinery. We have a line of machines you can use with satisfaction and profit.

RUFF HARDWARE CO.

1714-1716 Main Street Columbia, S. C. EVERYTHING FOR THE FARM EXCEPT THE MULE

ANNUAL REPORT

OF

C. E. Leaphart, Treasurer of Lexington County, S. C., for the Fiscal Year Commencing July 1, 1918, and Ending June 30, 1919.

SCHOOL CLAIMS

Table listing school claims with names, addresses, and amounts. Includes entries for J. B. Ballentine Supt., Rosa Wolf, Viola Mazyk, Rosa Wolfe, etc.

Table listing school claims with names, addresses, and amounts. Includes entries for Hattie E. Schneider, Eula M. Roof, Bertha Hebrard, etc.

Table listing school claims with names, addresses, and amounts. Includes entries for John T. Sox, C. K. Son, J. J. Koon, etc.