

FINAL SETTLEMENT

Take notice that on the 11th day of Sept., 1929, I will render a final account of my acts and doings as Administrator of the estate of J. H. Bonds, deceased, in the office of the Judge of Probate of Laurens county, at 11 o'clock a. m., and on the same day will apply for a final discharge from my trust as Administrator.

Any person indebted to said estate is notified and required to make payment on or before that date; and all persons having claims against said estate will present them on or before said date, duly proven or be forever barred.

E. W. BONDS, Administrator, estate of J. H. Bonds, deceased. Aug. 6, 1929—8-29-4tp.

Your tongue tells when you need



Coated tongue, dry mouth, bad breath, muddy skin, groggy nerves and sour stomach suggest its use.

BOND FLOWER SHOP

FLOWERS FOR ALL OCCASIONS 157 W. Main St. Phone 396

VARIETY

THIRTY OF THEM TO CHOOSE FROM

ONE FOR ANY AND EVERY OCCASION BAKED DAILY BY

CLAUSSEN'S

Since 1841—South's Favorites

Coal!

If you want coal that will give the most HEAT as well as the most SATISFACTION per BUCKET-FULL just call 62 and let us quote you prices.

CLINTON COTTON OIL CO.

WHEN CHILDREN Need a Laxative. We have used Theodor's Black-Draught in our family for nineteen years. I have found it of great help in raising my family. I have given it to all six of my children. Whenever they complain of upset stomach, or begin to look pale and sickly, I make a tea of Black-Draught and begin giving it to them. In a day or two they are all right. I give it to them for constipation, and my husband and I both take it. I always give it for colds in winter, for I believe a way to prevent them is to keep the system clean. —Mrs. Doshie Terry, 1205 Fourth Avenue, Decatur, Ala.

"Very Latests"

By Cecile

For the Week-End Wardrobe Summers full of week-ends mean lots of informal clothes suited to everything from a tennis or golf game to the Saturday night dance. With versatile cotton now at the height of fashion, it is possible to have a week-end wardrobe both inexpensive and complete. And, besides, the smartest possible.

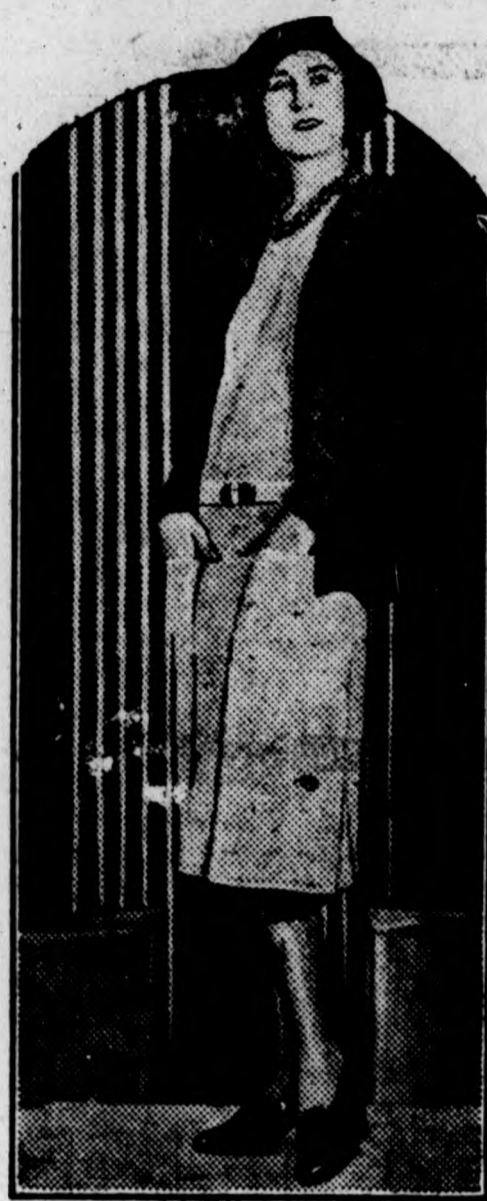
Make the train in a traveling suit of some cool, light-weight smart material. For this a short jacket and skirt of velour pique is up-to-the-minute, both cool and serviceable.

Among the quilted cotton costumes is this sports ensemble illustrated by Schiaparelli. The frock of pink-beige matelasse is sleeveless, belted with self material and finished with a novel tan and brown buckle. Brown and gilt wooden beads and a brown cotton cartigan complete the ensemble. A smart choice for the week-end wardrobe.

And for the inevitable sports—the sleeveless tennis dress is good for all of them. For this, a broadcloth of soft texture and flattering pastel tone, growing more lustrous the more it is washed, will be most practical.

The sports frock may be cut low in the back with a little strap-and-bow across the back to hold it in place in the excitement of the game. Group pleats at the side, perhaps, stitched low to preserve the snug hip-line and to give a low sare.

A soft lisle sweater and matching lisle sacks—and there's an adequate



sports outfit, including the velour pique skirt to wear occasionally with the lisle sweater. Of such is a successful week-end!



PERSPECTIVE

It is a marvelous spring morning. I am looking out through the window as I write; the summit of a purple lilac-bush is visible—its blooms in process of formation. The coaxing sunbeams are at work. When I have finished this sketch, I shall hurry outdoors and get all of the wonderful picture; one cannot see much from a window-case.

So much depends on one's vantage-point. So much that is essential to really intelligent living. I cannot see all that is for me, unless I hasten to the broad view.

A long time ago, an author wrote, "The West Through a Car Window." He saw a mere ribbon of the west, some fifty miles wide. It was very interesting—what he saw, but meager in scope.

There are big things outdoors; one cannot see them through a car window, much less understand them.

I believe it is the duty of every man and woman, to secure the best view-

point possible; yet there are those who exclaim loudly, while looking through a knot-hole in the dark enclosure.

Especially are people so about serious things—like religion and politics. Men condemn church and state, while viewing these colossal edifices through a crack in the fence! Hundreds and thousands of men and women are voting today on questions that they think they see through their key-hole! "If the blind lead the blind, both shall fall in the ditch."

The extent of my enjoyment this splendid morning, will depend on how thoroughly I get acquainted with all the entrancing things spread for my understanding, by mingling, seeing, touching, tasting; my happiness cannot be complete unless I fully understand.

The welfare of our great nation depends on the capability of its sovereign voters; they must not peep through key-holes, cracks, and narrow casements.

PRESBYTERIANS ARE INCREASING

Figures Reveal Membership Grew 9,331 Over Last Year's Total. Contributions Listed.

A gain of 9,331 over last year's total membership in the Presbyterian Church in the United States (Southern) is announced by the stated clerk of that denomination in its official statistical publication recently released. The membership, according to this authority, is now 452,988, and the total number of churches reported is 3,581, in a territory embracing 17 Southern and Southwestern states, made up of 17 synods and 92 presbyteries.

There are 2,386 licensed ministers to serve this number; an increase of 44 over last year's record. The Sunday school enrollment reached its highest record with a total of 437,094, and here a steady increase is noted over a five-year period, which indicates that in 1925 the enrollment was only 411,653.

The contributions made during the church year total \$14,485,166 to all phases of the church's activity. Of this amount \$1,111,246 was directed to foreign missions, \$588,008 to assembly's home missions, \$1,087,300 to local home missions, \$371,048 to Christian education and ministerial relief, \$23,223 to the assembly's training school for lay workers, \$692,832 to educational institutions, \$79,593 to religious education, \$19,575 to Bible cause, \$388,549 to orphans' homes, and a total of \$2,735,893 was given to building expense. The per capita gifts were announced as follows: \$10.53 for benevolences and \$21.38 for current expense, as compared with that of the previous year: \$12.40 for benevolences and \$23.18 for current expenses.

These facts and figures are compiled in the office of the stated clerk, Dr. J. D. Leslie, of Dallas, Texas, and with the assistance of the Rev. E. C. Scott, also of Dallas. The newly elected moderator of the general assembly of the Presbyterian church is Dr. William Ray Dobyns, pastor of South Highland Presbyterian church, Birmingham, Ala., who holds this office until the next meeting of the assembly, May 22, 1930, at Charlottesville, Va.

SUBSCRIBE TO THE CHRONICLE

Home Demonstration Notes

Miss Mary Shaw Gilliam, Agent

Officers Elected for Mt. Pleasant Club At a meeting of the ladies of the Mt. Pleasant club on Monday afternoon, the following officers were elected: Mrs. C. W. Madden, president; Mrs. John H. Hunter, vice-president; Mrs. John Knight, secretary.

After the business program, the demonstration agent gave instructions in the canning of fruits and vegetables, using tomatoes as an illustration. There were twelve present to enjoy the program.

Lanford Club Has Largest Attendance At Meeting

The Lanford club leads all the other clubs in the county in attendance, having twenty-one at its meeting on Wednesday. Mrs. W. L. Patterson, president of the club, had charge of the program. Mrs. J. M. Fleming was elected president of the club. A demonstration in canning was given by the county agent. The next meeting will be held September 3.

Club Meeting At Hickory Tavern

The second meeting of the home demonstration club at Hickory Tavern was held Tuesday afternoon at the school house. The meeting was in charge of Mrs. Melvin, the president. Several new members were present at this time, also a few visitors who were cordially welcomed. The chief topic of the meeting was canning and the new methods of preservation.

Barksdale-Narnie Shows Fine Spirit

One of the best club meetings of the month was held at Barksdale-Narnie, Thursday afternoon. The following leaders were selected by the group: Mrs. Luther Stone, president; Mrs. Roy Burgess, vice-president; Mrs. Lila Willis, secretary. There were twenty present to join in the discussions of the conservation and preservation of fruits and vegetables. The next meeting will be held September 6.

4-H Club Meets

The young people of the New Prospect community met with Miss Nelle Moore for an interesting meeting. Seventeen young people were present to elect the following officers: President, Nelle Moore; vice-president, Pauline Pinson; secretary, Nelle Thompson; cheer leaders, Mary Culbertson and Emma Lou Finley.

After the business, the county agent

gave a demonstration in the "Importance of the Proper Dress." At the conclusion of this, ice cream and cake were served by Mrs. Moore.

County Council of Farm Women To Be Organized

On Friday morning at 11 o'clock at the court house all the members of home demonstration clubs in Laurens county are asked to meet for the purpose of organizing a Council of Farm Women for this county.

Miss Blanche Tarrant of Greenwood, district agent of the Piedmont section, Mrs. J. L. Williams of Ninety Six, director of the South Carolina Council

of Farm Women for the Piedmont district, and Miss Louise Flemming, home demonstration agent of Greenwood county, will be present at this time to assist the women of the county with the organization.

A county council is a very vital organization among the farm women and Laurens county is very anxious to join the ranks of other progressive counties. Therefore Miss Gilliam, county agent, asks that every woman in the county interested in home demonstration work be present at the meeting on Friday, August 23rd.

Don't put off seeing the new smart and attractive LADIES SPORT and MEN'S WRIST WATCHES.

Gruen—\$22.50, \$29.75, \$35 and \$50. Elgin—\$16.75, \$29.50 and \$35 and many other makes at \$3.50, \$4.00, \$10 and \$12.

J. B. Frontis, Jeweler Clinton, S. C.

WHAT DO

P. S. JEANES

DO?

See Us Now if you have room in your bin for FREE COAL



Right now we are busy here at our store enrolling members in the 8th Annual Heatrola Free Coal Club. And no wonder, for this is a Club which offers unusual benefits. By becoming a member you get a supply of Free Coal—and new heating comfort for your home.

The Club membership fee is only \$2.00, and this is applied on the purchase price of any model Heatrola which you may select. Before cold weather comes we will install the Heatrola in your home and with it you will receive a ton of Free Coal (one-half ton with the Heatrola Junior). Payments may be completed on easy installments.

If you plan to install a modern heating plant this Fall, take advantage of this opportunity to secure a genuine Heatrola—and, with it, a supply of coal free.

The Free Coal offer ends August 31st. Come in, or call us at once, and we'll come to see you.



No. 6-D—the new, latest Heatrola. Advanced engineering in a cabinet of striking, modernistic design.

the NEW Estate HEATROLA

Prather-Simpson Furniture Co. Clinton, South Carolina

Meeting Mail Order Prices ON Automobile Tires

GOODYEAR PATHFINDER TIRES Lowest prices since 1899—made possible by the immense manufacturing capacity of the Goodyear Tire and Rubber Company and our determination to meet catalogue house prices.



GOODYEAR PATHFINDER TIRES High Pressure

Table with 2 columns: Size and Cash Price. Lists various tire sizes and their corresponding prices.

Balloons

Table with 4 columns: Size, Cash Price, Size, Cash Price. Lists various balloon sizes and their corresponding prices.

Goodyear Speedway Tires

Table with 4 columns: Size, Cash Price, Size, Cash Price. Lists various balloon sizes and their corresponding prices.

McDaniel Vulcanizing Works

Phone No. 2 R. P. Chapman, Mgr. West Main St.