

FREE! FREE!

The Casino Theatre Will Give Absolutely Free a **NER-A-CAR**,

"The Motor Sensation of the Age"

TO THE ONE HOLDING THE LUCKY NUMBER ON FEBRUARY 19TH. CONTEST STARTS SAT., JANUARY 19, AND LASTS ONE MONTH.

The more coupons you hold your chances are better for winning.

The Day of the Drawing You Must Have a Ticket Purchased on This Date and be at the Theatre.

FOR RENT

Two story house on Enterprise Street which has just been repaired and painted inside and outside. Electric lights, hot and cold water and sewerage. Four rooms and hall upstairs; four large rooms, hall and bath downstairs; also front porch and back porch. Only one block from center of town. Rental \$35.00 per month.

Also several offices in Jacobs and Company building. Rental \$10.00 to \$16.00 per month.

Apply to J. F. JACOBS, JR.
Jacobs and Company

REPAIR IN TIME

Have your shoes repaired, half-soled or heeled before it's too late--while the uppers are in good condition. That's the way to save shoe money.

CLINTON SHOE SHOP

A. E. McINTOSH, Proprietor



LET US GET BUSY

on your car and put it in first class running order. You may think your car is running all right, but it may be wearing down the gears, bearings, and other hidden parts unknown to you. A careful examination will disclose the trouble.

Edwards Auto Service

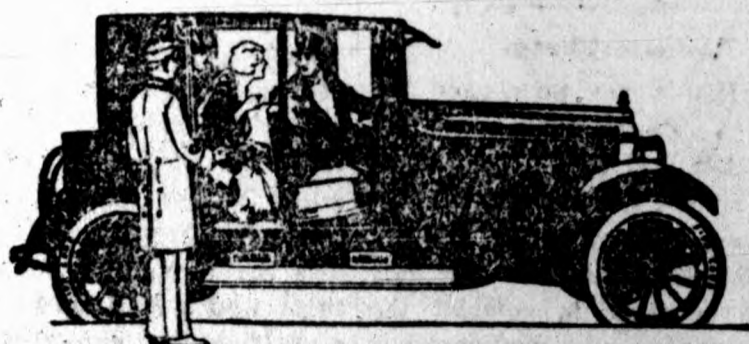
The Day of the Knight is here!

238% Sales Increase!

One thing sure—it takes a wonderful motor car to make the brilliant record Willys-Knight made in 1923.

People are turning to the Knight for its beautiful coachwork, its luxurious comfort, its distinction, its great strength—but mainly and mostly for the many incomparable benefits of the wonderful Willys-Knight sleeve-valve engine. The engine that grows quieter, smoother and more powerful in use!

ELLIS MOTOR CO.



WILLYS-KNIGHT

INTEREST AT STATE CAPITAL CENTERS IN TAX QUESTION (Continued from Page One)

These are, simply taken as illustrating cases.

The South Carolina Tax Commission in the matter of special taxes, figures that for the year 1924, if things go along as they do now, they will raise from the income tax \$2,250,000 the State's share of the gasoline tax, \$600,000; from the corporation license, \$500,000; and from the documentary stamp tax \$1,500,000, making an aggregate of \$5,150,000.

The disposition, at this time, seems to be to retain all of the special taxes. There may be efforts to repeal certain features but, in the main, there will be no material change. The Tax Commission will recommend an increase in the tobacco and cigar tax, on the ground that the consumer is now paying more, in most cases, than the State is deriving from this stamp tax. By way of illustration, the Tax Commission points out that the present rate of smoking tobacco is six cents a pound; on one ounce the tax will be 21-64 of a cent, and if the merchant charges one cent for this stamp, as is often done, there is a profit of 41-64 of a cent in each of these stamps. The disposition, as a result of this, is to change the denominations of the stamps, making them in more nearly rounded figures, and do away, to a large extent, with the troublesome fractions. It is figured that at present the profit feature in the stamps adds to its popularity among the merchants who deal in such items, but the State feels that it is only fair that it should get the full amount derived from this tax. An effort will also be made to include chewing tobacco and snuff in the provisions of this tobacco tax. These types of tobacco were included in the original act.

An effort will be made at this session to repeal the tax on amusements. The State authorities figure that if this feature is retained there will be collected for 1924 about \$125,000 to \$150,000 from this admission tax. In this connection, it may be noted that the State, through the Tax Commission, collected for 1923 \$35,000 from circuses and carnivals. In connection with the new sources of revenue, which are largely to be the issue at this session, Governor McLeod in his very strong message to the Assembly, has this to say:

"We must still be on the search for new sources of revenue. We have been and very properly, I think, endeavoring to reach those things which were not necessary: luxuries and non-essentials. None can so well afford to bear a part of the tax burden as those with means to afford luxuries or non-essentials, for they have against this tax a substantial remedy: doing without the luxuries. I therefore recommend that, as far as possible, the system of indirect taxation be placed upon luxuries, especially upon those from which there would be derived a considerable revenue, among others, soft drinks, chewing gum and cosmetics. This tax, in order to be fair and just, and to carry out the general principle, should be placed in sufficient amount to be necessarily passed to the consumer. A large field of investigation will open to you along this line, and should embrace, as far as is necessary, any luxuries well recognized as such, and neither actually nor traditionally considered as necessities. The State Commissioner of Agriculture has recommended an inspection tax upon lubricating oils, hay and paints, this to be both a protection as to purity and quantity, and likewise a source of some additional revenue. This I ask that you investigate, and apply insofar as will be equitable and just. The progress of indirect taxation should always be with a view to reducing the levy upon physical property. We cannot consistently reach out for other forms of taxation without a comparative reduction in the methods already obtaining.

There is going to be a very lively time over the proposed tax on soft drinks. Governor McLeod favors it, and so does the South Carolina Tax Commission. The Tax Commission is distinctly of the opinion that should the tax on soft drinks be imposed it should be made so worth-while that it will be passed on to the consumer. If this should be done it is figured that the State would raise, according to Chairman Query, about \$750,000 from this source.

There are going to be all sorts of suggestions as to how new sources of revenue can be incorporated in the present law. The disposition is to add, rather than subtract from these sources, but at the same time there is worry about how to bring about the development of the various counties and not have them bear too much of a direct tax burden. The Tax Commission is suggesting a general questionnaire, which, it believes, will result in the adding of at least fifty million dollars of property to the taxable values in this State. The simple purpose of the question-

naire is to ask questions as to the various classes of property on which returns are to be made during the year 1924. No new methods are to be imposed in this questionnaire, but the property owner will be asked, under oath, to answer certain questions, which are not included in the present form.

Another piece of work that the Tax Commission is doing, which, it believes, will be of great value to the State, is the listing of all of the bonded debts due by the various cities and counties. This task has not yet been completed, but, roughly speaking, it is estimated that the cities and counties of this State now have bonded debts aggregating between \$50,000,000 and \$75,000,000. An inquiry is also being directed as to the status of the sinking funds incident to these various bond issues, and the Tax Commission will recommend something like an orderly supervision of the various bond issues that are to be issued in subsequent years.

The joint committees of the Senate and House are hard at work on the appropriation bill, and are making decided progress. The State has most excellent material on these two finance committees and the respective chairmen, Senator Gross, of Dorchester, and Mr. Snapp, of Columbia, are real wheel-horses; they have a keen appreciation of their work and are applying themselves with zeal and their example is being followed. The committees will be ready when the Assembly meets again on the 23rd. In addition to the task set other ideas will most likely be concretely presented.

FORESTRY CONGRESS TO MEET IN SAVANNAH

The Southern Forestry Congress will hold its sixth annual meeting in Savannah, Ga., on January 28-30.

Mrs. Joseph A. Bailey of this city, State-Vice-Regent of the South Carolina D. A. R., has received the following invitation from the Georgia vice-president to the local chapter:

"Mr. Bonnell H. Stone, president of Georgia Forestry Association, and who is also president of the Southern Congress, has asked me to extend to you his personal invitation.

As a member of the Publicity Committee of the Congress, and State Chairman of Georgia on co-operation, I am asking you, in the interest of Forestry, to extend to your organization this invitation, and to have it published in your local paper.

Yours very truly,
MRS. M. E. JUDD.

Vice-Pres. for Georgia of Southern Forestry Congress.

MR. A. M. GOLDEN
Is our regular
PIANO TUNER
Call on us for
his services.

O'DANIEL & REID

BASKET BALL

DOUBLE HEADER

Thornwell High

VS

Peter's Athletic Club

P. C. vs Pacific Mills

SATURDAY, JAN. 19.

7:30 / Admission Both Games---50c

OTHER HOME GAMES:

Newberry	January 28
Clemson	February 2
Citadel	February 6
John B. Stetson	February 7
College of Charleston	February 20
Greenville Country Club	February 22

Mrs. Housewife:--

The bakeries in Germany are guarded by the police force.

Clinton Bakery is guarded by keen competition, and we realize that we are small and Local, which makes it logical for us to continue using the best ingredients which produces a loaf of bread containing more food value than any food known to mankind.

YOU ARE THE JUDGE

If our bread pleases you, then tell your Grocer "Clinton Maid Bread."

The Clinton Bakery

"Get It At Your Grocers"

Ford

THE UNIVERSAL CAR

Looking Ahead

LAST Spring a total of 350,000 people were disappointed in not being able to obtain deliveries of Ford Cars and Trucks, as orders were placed faster than cars could be produced.

The demand for Ford Cars and Trucks this Spring will, according to all indications, be far greater than last Spring.

Winter buying has been increasing at a greater rate than ever before.

Actual retail deliveries the past 60 days totaled 308,170 Ford Cars and Trucks, an increase of 1,961 a day over a year ago.

Over 200,000 people have already ordered Ford products on our purchase plan, the majority of whom will take delivery in the Spring.

The above facts are given with the suggestion that you list your order promptly with a Ford dealer if you contemplate the purchase of a Ford Car or Truck for use this Spring or Summer and wish to avoid delay in delivery.

Ford Motor Company
Detroit, Michigan

You need not pay cash for your car. You can arrange to make a small deposit down, taking care of the balance in easy payments. Or, you can buy on the Ford Weekly Purchase Plan. This puts you on the preferred order list and insures delivery of your car at a time to be determined by yourself.

E. W. FERGUSON