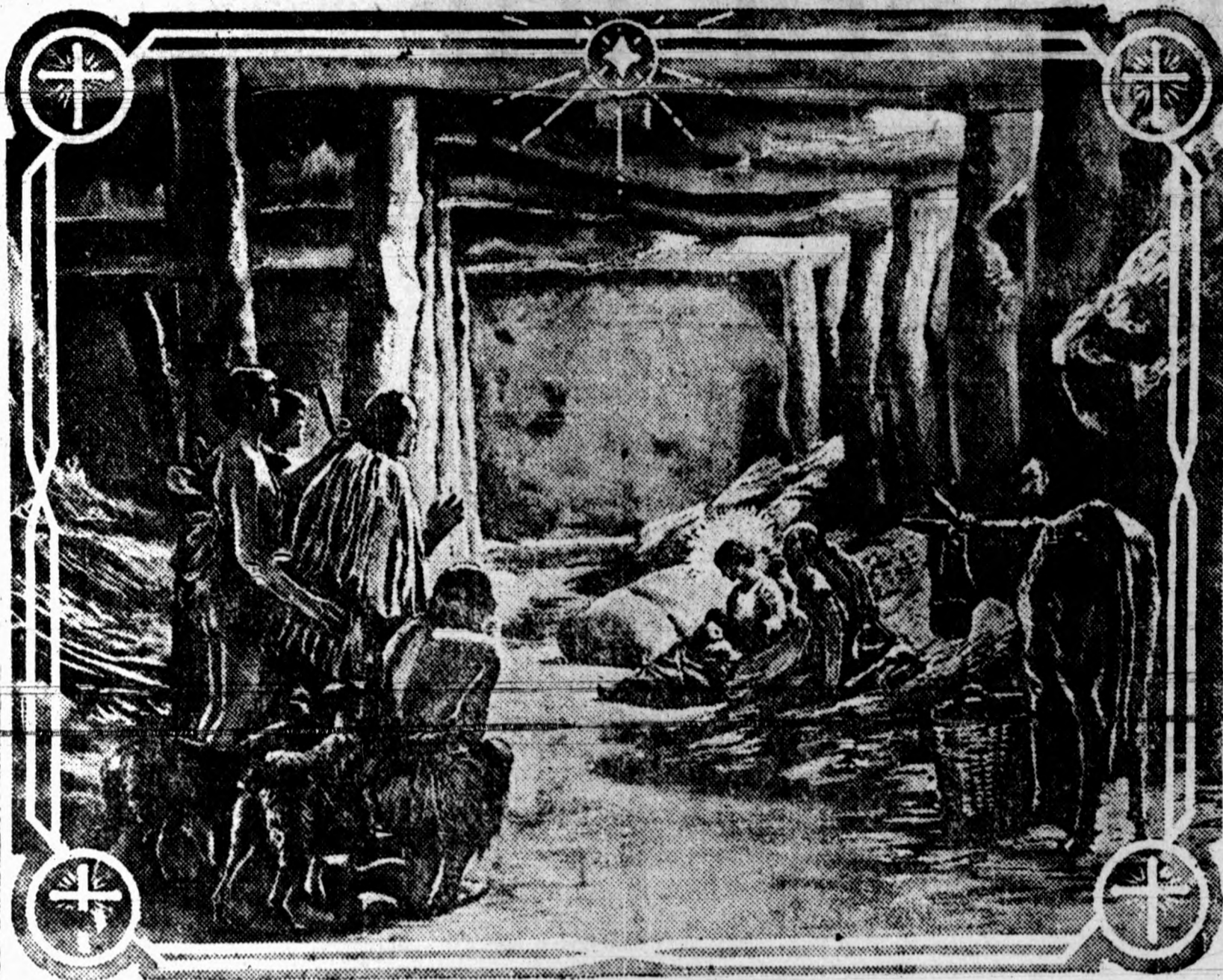


## Little Babe of Bethlehem



When came the stars together  
In the morning long ago,  
The little Babe of Bethlehem  
Slept in a manger low.  
Wings of myriad angels swept  
The trembling mists of morn,  
When He who was Prince of them  
In Bethlehem was born.

A king, and yet no diadem  
Upon His brow to rest;  
He had no pillow for His head  
But His own mother's breast;  
His palace was a stable,  
Bare of knight or paladin,  
When Christ the Lord of Heaven  
Came to free the world of sin.

His eyes were soft as summer skies,  
His brow as white as snow,  
And round His head a halo shone  
Like sunlight's golden glow.  
But, He lay an outcast, hidden  
From Herod's cruel harm—  
The Lamb of God that nestled  
Upon His mother's arm.

O little Babe of Bethlehem,  
I see Thee sleeping there,  
Thine eyes as deep as summer skies;  
Thy brow so white and fair;  
Again I see in wonder kneel  
The shepherds of the fold,  
The Magi with their gifts of myrrh  
And frankincense and gold.

I see Thy mother Mary,  
As in awe her hands caressed  
Thy hallowed head of glory  
Where it laid upon her breast;  
I hear the crooning lullaby  
That she so softly sings,  
While Thy dear arm is round her neck,  
Where tenderly it clings.

Far were Thy feet to wander  
To seek the cruel tree,  
And harsh the hands that waited  
With their crown of thorns for Thee,  
But Thou hadst that one happy hour  
Of peace and joy and rest,  
When Thy head was lain in Bethlehem  
Upon Thy mother's breast.

John S. McGroarty.

## A Christmas Blessing

By Rev. Dr. Howard Duffield

MAY the Blessing of the Light that shown at Mid-night come to the hearts that are shadowed and the homes that are dark.  
May the Blessing of the Song of the Angels come to the multitudes who strive and bleed upon fields of battle, and to all who wage the hard warfare of life.  
May the Blessing of the Good Word to the Shepherds come to everyone who is humbly and honestly laboring to do a share of their world's work.  
May the Blessing of the Manger Cradle come to that innumerable company against whom the doors of hope and peace and rest are shut.  
May the blessing of the Holy Child come to every one who has forgotten that Thou, O God, art his Father, and that all men are brothers.  
May the Blessing of the Guiding Star come to those who wander in the night and cannot find the homeward way.  
May the Blessing of the Stable come upon all hearts, wakening a kindly sense of kindred with every living thing that walks the field and forest, or wings the air, or passes along the paths of the seas.

Remember this Christmas day that love is the strongest thing in the world, and that the blessed Life which began in Bethlehem is the image and the brightness of the Eternal Love.

Out of everything you get exactly as you put it into it. If you feel that Christmas has degenerated into a mere commercial barter of gifts, seek the cause in your own self.

## Christmas Chimes



From Painting by H. G. Wood.

# Weak Links in a Strong Chain

That's just what imitation parts are when they become a part of your Ford car. They look strong enough, but the metal isn't there—the strong, durable Vanadium steel that goes into the Ford chassis and every Ford part. Ford parts are specially cast and heat-treated, each according to its use. Some require a hard, flint-like wearing surface, others need resiliency, and some need just "toughness."

Ford metallurgists have been studying these problems for sixteen years and know just how each unit should be made to endure a maximum of wear and tear. They know that best results can be obtained only by the use of special formulas for different parts, and that honest Ford parts wear from thirty-five to one hundred per cent longer than counterfeits.

We carry complete assortments of genuine Ford parts for both passenger cars and trucks. And our garage is equipped to give careful, prompt Ford service—from minor adjustments to complete overhauls. Drive in it's better to be safe than sorry. Come to the Authorized Ford dealer for service.

	List price	Freight	Tax	Delivered
Chassis	\$475.00	\$35.48	\$19.59	\$535.07
Runabout	500.00	35.48	20.63	561.11
Touring	525.00	35.48	21.66	587.14
Coupelet	750.00	35.48	30.94	821.42
Sedan	875.00	35.48	36.09	951.57
Truck	550.00	35.48	13.69	604.09

## E. W. FERGUSON

Insist on Genuine Ford Parts



## Upon These Arguments We Rest Our Case

YOU, the buyers, are the real builders of wagons. You put the final Okay upon the use of certain materials and construction when you buy a wagon containing them—and refuse to buy a wagon that does not. We want to show you how the Thornhill Wagon is built. Upon a plain statement of facts we are willing to rest our case. We believe the Thornhill way would be your way if you should build a wagon.

For spokes and axles tough second growth highland hickory is used. For hubs and felloes the sturdy white oak is preferred. This wood grows upon the mountain side. The ground is hard—the climate severe. It has to fight for life. It has nearly twice the strength of oak and hickory that grows under softer conditions. Outdoors under shelter it remains for three to five years. The sap dries in it, giving it a strength that's kin to steel.

## THORNHILL WAGONS

Full Circle Iron  
Malleable Front Hound Plate

Trussed Bolsters and  
Gears

Long Wear Beds



Bolsters Can't Hang In Turning

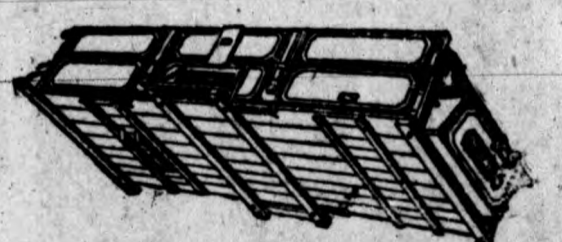
In turning and backing up, with the ordinary circle iron, which is only a half circle, bolsters run off the end of the track and hang. It is difficult to make short turns and rack up. The Thornhill full circle iron gives a continuous track on which the bolsters can turn.

The gears of Thornhill wagons stay in line for life. Instead of the usual front hound plate, hound plate of malleable iron is used. It is a metal jacket braced at eight points that keeps gears from ever getting out of line.



Note the Adjustable Brake Lever

On the front bolsters of Thornhill wagons are heavy iron plates running along top and bottom—connected by rivets that run clear through the bolster. Strength and lightness are combined. Rear gears are strongly innased. There are braces on both top and bottom that extend the full length of the hounds. Solid trust bars extend the full length of the axles giving them double strength.



If you examine the beds of Thornhill Wagons closely you will see at once the superiority of the construction. The bottoms are re-inforced over front and rear bolsters.

Come in and examine this wagon for yourself. We will take pleasure and pride in showing you a Thornhill—The wagon made of tough highland oak and hickory—with features all others lack.

(328-2)

FARMERS MER. CO., Clinton, S. C.

Renew Your Subscription to The Clinton Chronicle